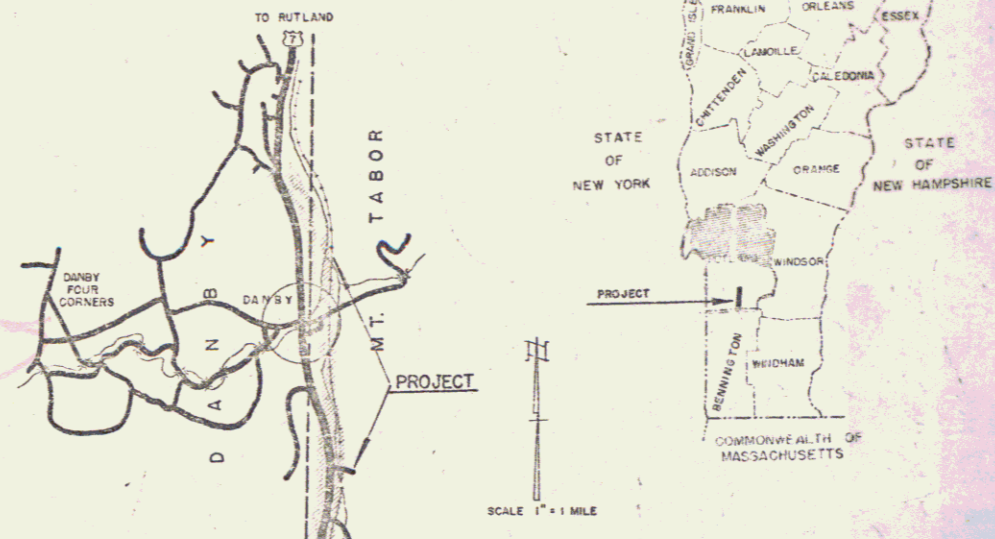


INDEX OF SHEETS	
SHEET NO.	TITLE PAGE
2	TYPICAL CROSS-SECTION OF IMPROVEMENT BITUMINOUS CONCRETE PAVEMENT
3	QUANTITY SHEET (ITEMS)
4	QUANTITY SHEET (DRAINAGE)
5-10	EARTHWORK SHEETS
11-29	PLAN & PROFILE SHEETS
30	SB-PA 1 6'-10" X 6'-1" PLATE PIPE ARCH
31	SB-PA 2 6'-10" X 6'-1" PLATE PIPE ARCH
32	PRELIMINARY INFORMATION SHEET - BRIDGE 722+93-723+72
33	PLAN SHEET - SCALE 1" = 20'
34	APPROACH SLAB SUPERSTRUCTURE
35	DETAILS OF ABUTMENT NO. 1
36	DETAILS OF ABUTMENT NO. 2
37	BRIDGE DETAILS
38	DETAILS 12' X 12' R.C. BOX 774+88
39	REINFORCING STEEL SCHEDULE, R.C. BOX, 774+88
40	BLANK
41	REINFORCING STEEL SCHEDULE
42	DETAILS OF 9'-4" X 6'-3" PLATE PIPE ARCH, 797+25
43	DETAILS OF 9'-4" X 6'-3" R.C. BOX EXTENSION, 805+42
44	REINFORCING STEEL SCHEDULE - R.C. BOX, 805+42
45	REINFORCING STEEL SCHEDULE - R.C. BOX, 805+42
46	B-1 BANKING TABLES
47	B-5 TYPICAL SLOPE STABILIZING
48	C-1 TREATED TIMBER CURB
49	D-1 PRECAST DROP INLETS AND CATCH BASINS
50	D-2 DRAINAGE
51	D-3 GUTTERS
52	D-4 FLUSHING BASINS
53	D-8 REINFORCED CONCRETE DROP INLETS
54	E-1 BARRICADES, SIGNS AND LIGHTS
54-A	E-9 CONSTRUCTION IDENTIFICATION SIGNS
55	G-3 THREE CABLE GUARD RAIL WITH STEEL POSTS
56	G-4 STEEL MARKER POSTS
57	J-1 PROJECT AND BOUNDARY MARKERS
58	SCB - 30 - 60
59	SCB - 40 - 60
60	SCB - 50 - 60
61	SB - 20 - 60 CONSTRUCTION DETAILS & WF BEAM BRIDGES
62	SB - 22 - 60 EXPANSION JOINT DETAILS
63	SB - 23 - 60 EXPANSION JOINT DETAILS
64	SB - 24 - 60 EXPANSION JOINT DETAILS
65	SB - 25 - 60 EXPANSION JOINT DETAILS
66	SB - 26 - 60 EXPANSION JOINT DETAILS
67	SB - 27 - 60 EXPANSION JOINT DETAILS
68	SB - 28 - 60 EXPANSION JOINT DETAILS
69	SB - 29 - 60 EXPANSION JOINT DETAILS
70	SB - 30 - 60 EXPANSION JOINT DETAILS
71	SB - 31 - 60 EXPANSION JOINT DETAILS
72	SB - 32 - 60 EXPANSION JOINT DETAILS
73	SB - 33 - 60 EXPANSION JOINT DETAILS
74	SB - 34 - 60 EXPANSION JOINT DETAILS
75	SB - 35 - 60 EXPANSION JOINT DETAILS
76	SB - 36 - 60 EXPANSION JOINT DETAILS
77	SB - 37 - 60 EXPANSION JOINT DETAILS
78	SB - 38 - 60 EXPANSION JOINT DETAILS
79	SB - 39 - 60 EXPANSION JOINT DETAILS
80	SB - 40 - 60 EXPANSION JOINT DETAILS
81	SB - 41 - 60 EXPANSION JOINT DETAILS
82	SB - 42 - 60 EXPANSION JOINT DETAILS
83	SB - 43 - 60 EXPANSION JOINT DETAILS
84	SB - 44 - 60 EXPANSION JOINT DETAILS
85	SB - 45 - 60 EXPANSION JOINT DETAILS
86	SB - 46 - 60 EXPANSION JOINT DETAILS
87	SB - 47 - 60 EXPANSION JOINT DETAILS
88	SB - 48 - 60 EXPANSION JOINT DETAILS
89	SB - 49 - 60 EXPANSION JOINT DETAILS
90	SB - 50 - 60 EXPANSION JOINT DETAILS
91	SB - 51 - 60 EXPANSION JOINT DETAILS
92	SB - 52 - 60 EXPANSION JOINT DETAILS
93	SB - 53 - 60 EXPANSION JOINT DETAILS
94	SB - 54 - 60 EXPANSION JOINT DETAILS
95	SB - 55 - 60 EXPANSION JOINT DETAILS
96	SB - 56 - 60 EXPANSION JOINT DETAILS
97	SB - 57 - 60 EXPANSION JOINT DETAILS
98	SB - 58 - 60 EXPANSION JOINT DETAILS
99	SB - 59 - 60 EXPANSION JOINT DETAILS
100	SB - 60 - 60 EXPANSION JOINT DETAILS

STATE OF VERMONT  
DEPARTMENT OF HIGHWAYS

PROPOSED IMPROVEMENT  
TOWNS OF MT. TABOR-DANBY  
COUNTY OF RUTLAND  
U.S. ROUTE 7  
MANCHESTER-RUTLAND ROAD

FED. ROAD DISTRICT NO.	STATE	PROJECT NO.	SHEET NO.	TOTAL SHEETS
1	VT	F019-2(1)	1	188



PROJECT NAME & NUMBER	TYPE	PAVEMENT	AREA
Mt. Tabor-Danby F019-2(1)	BIT. CONC.	6.000000	
RECORD PLANS			
MATERIALS			
SUBGRADE OF GRAVEL TOWN OF MT. TABOR, VT. BURTON L. NICHOLS DANBY, VT.			
SUBGRADE OF SAND BURNINGHAM, VT. ANTHONY C. GASTH DANBY, VT.			
CRUSHED GRAVEL BURTON L. NICHOLS DANBY, VT.			
REPAV'T MUDON OIL CO. ALBANY, NY & RUTLAND, VT.			
REFINED TAR OLD COLONY TAR CO. WORCESTER, MASS.			
BITUMINOUS CONCRETE L.M. PIKE & SONS LARAWA, N.H.			
CONCRETE CLASS B M.E. DANLEY, MANCHESTER, VT.			
REINFORCING STEEL BETHLEHEM STEEL CO.			
BETHLEHEM, PA.			
STRUCTURAL STEEL VERMONT STRUCTURAL STEEL CO.			
BURLINGTON, VT.			
REINFORCED CONCRETE PIPE AMERICAN-MANHETTA CO.			
WINDSOR, VT.			
REINFORCED CONCRETE CHAIN MET. PIPE NEW ENGLAND METAL CO.			
DORSET, VT.			
CONTRACT			
DATED 13 APRIL 1951			
SIGNED 24 APRIL 1951			
CONSULTED 9 AUG 1952			
RECORDED 9 AUG 1952			

BEGINNING AT A POINT 19,480.2 FEET SOUTH OF THE DANBY-MT. TABOR TOWN LINE AND EXTENDING NORTHERLY 22,833.8 FEET, EXCLUDING RAILROAD CROSSING

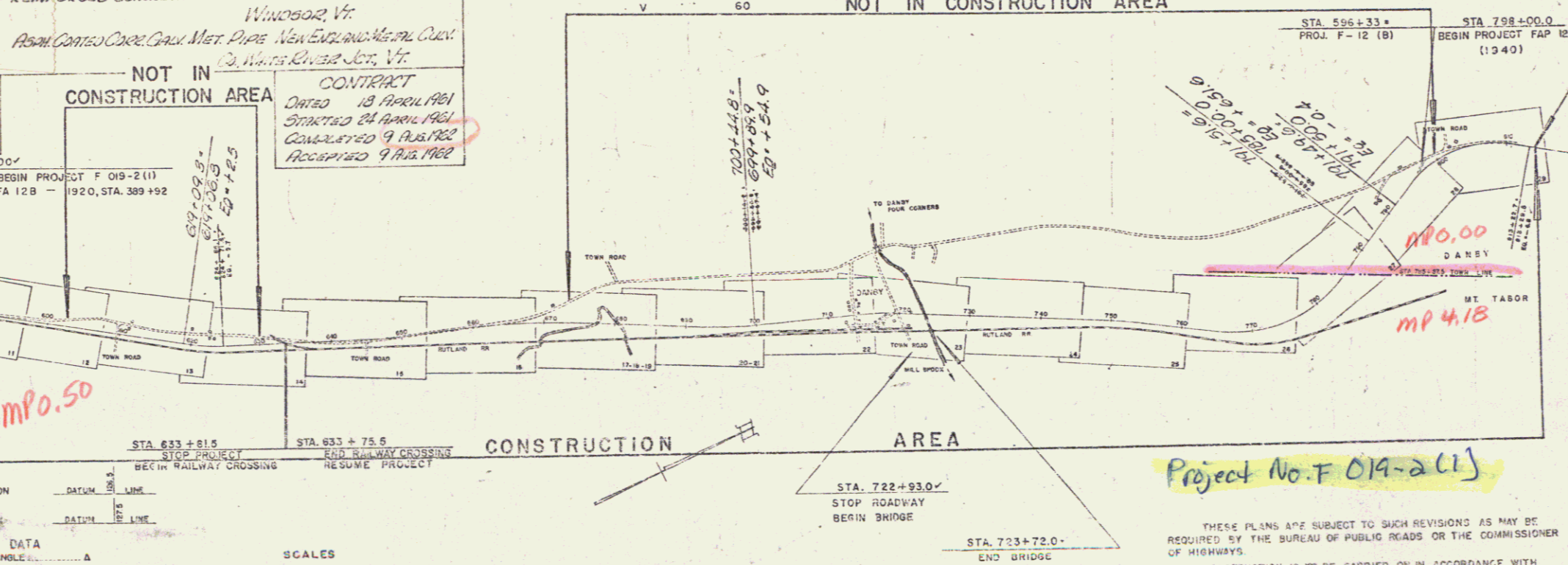
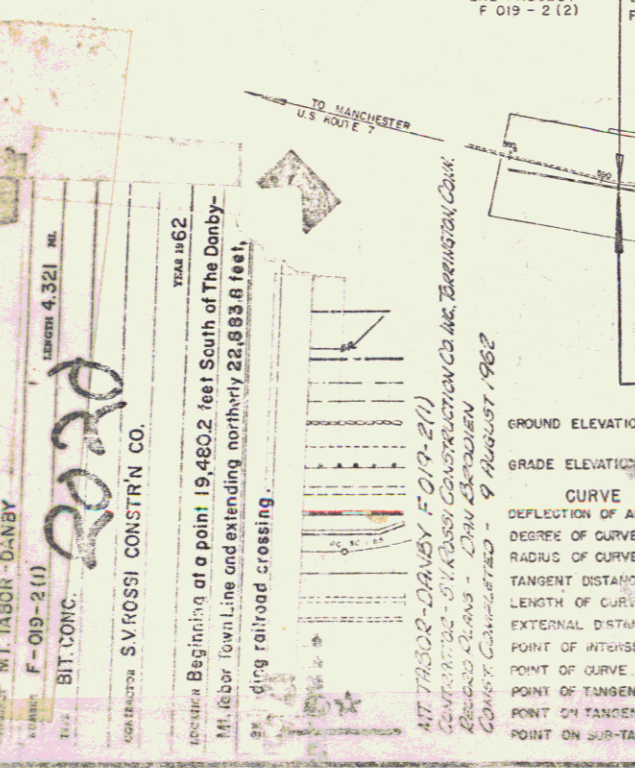
LENGTH OF ROADWAY 22,817.1 FEET = 4.321 MILES

LENGTH OF BRIDGE 79.0 FEET = 0.015 MILES

LENGTH OF PROJECT 22,896.1 FEET = 4.334 MILES

DESIGN	DESIGNATION
ADT 1960	1880 - 2325
ADT 1980	2650 - 3250
DIV	385 - 460
D	60%
T	6%
V	60

CHAINS & WOOD GUIDES	S.T. GERSHOLD ESSEX, VT.
TREATED TIMBER PILING	NEW ENGLAND POLE & WOOD TREATING CO., MERRIMACK, N.H.
GRANITE BRIDGE CURBS	BARRITT & GRANITE CORP., MILFORD, N.H.
METAL BEYOND RAILING	VERMONT STRUCTURAL STEEL CO., BURLINGTON, VT.
CONTRACTOR	S.V. ROSSI CONST. CO., INC., TORRINGTON, CONN.
RESIDENT ENGINEER	DAN BROODVIN
INSPECTORS	GLEN RUDAS - PETER FRANKONI
RECORD PLANS	DAN BROODVIN



Project No. F 019-2(1)

NOTE: ANY FURTHER INFORMATION CONCERNING FINAL QUANTITIES, AMOUNTS OR OTHER DETAILS RELATIVE TO THIS PROJECT MAY BE FOUND IN EITHER THE FIELD BOOKS OR THE ESTIMATE FILE.

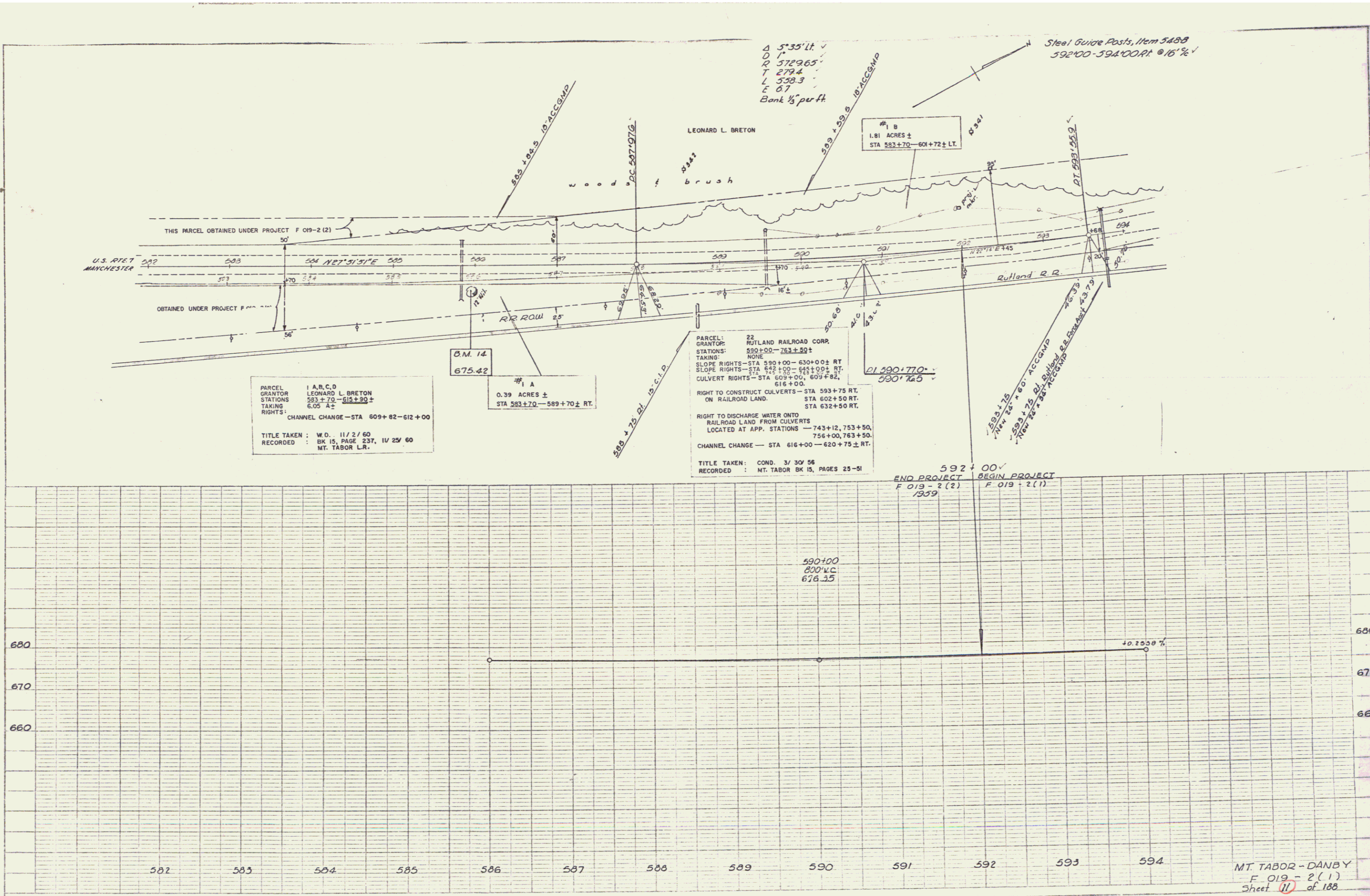
DEPARTMENT OF COMMERCE  
BUREAU OF PUBLIC ROADS

APPROVED SUBDIVISION ENGINEER DATE 3 AUG 1952	APPROVED BRIDGE ENGINEER DATE 3 AUG 1952	APPROVED DISTRICT ENGINEER DATE 2 March 1957	APPROVED HIGHWAY ENGINEER DATE 1 AUG 1952	APPROVED DATE 27 FEB 1957 SUBMITTED BY ORDER OF THE STATE HIGHWAY BOARD
---	--	--	---	---

PROJECT	F 019-2(1)
SHEET	1 OF 188 SHEETS

PLAN  
 DATE: 11/2/60  
 DRAWN BY: J. J. HANCOCK  
 CHECKED BY: J. J. HANCOCK  
 NO. 10

PROFILE  
 DATE: 11/2/60  
 DRAWN BY: J. J. HANCOCK  
 CHECKED BY: J. J. HANCOCK  
 NO. 10



EXCAVATION & REMOVAL OF ROAD SURFACE ON ROADWAYS  
598+00-603+50 LT.

STEEL GUIDE POSTS  
594+00-595+00 RT 16" 5/8"

STEEL MARKER POSTS  
602+60 LT. & RT.

REMOVAL & DISPOSAL OF PRESENT GUARD RAIL  
596+30-598+63 LT.  
599+83-604+42 LT.

BITUMINOUS GROUTED GUTTERS  
602+60 RT.

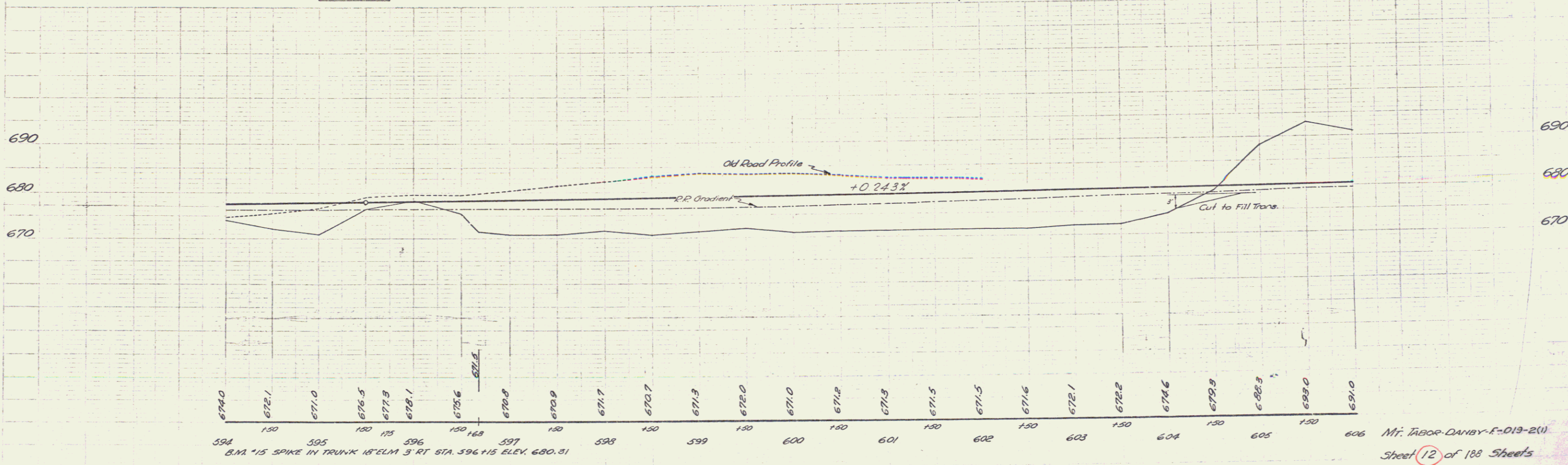
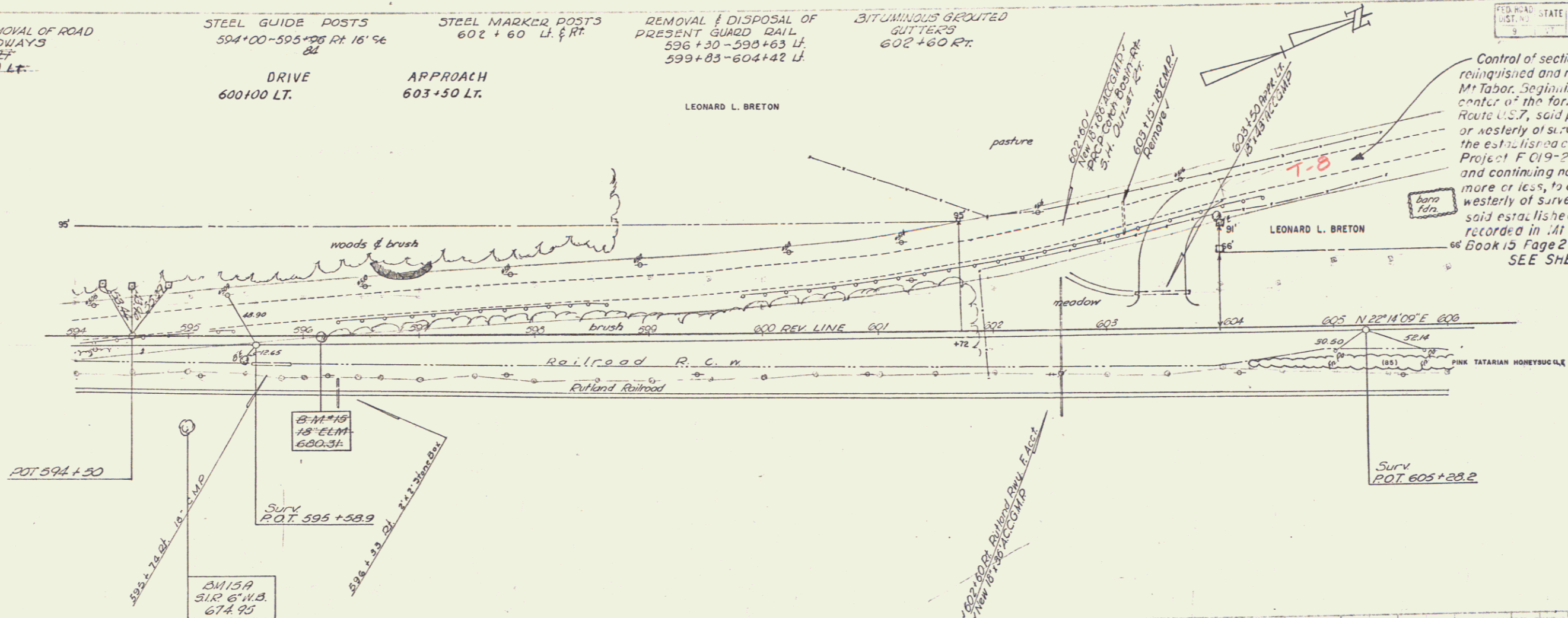
DRIVE  
600+00 LT.

APPROACH  
603+50 LT.

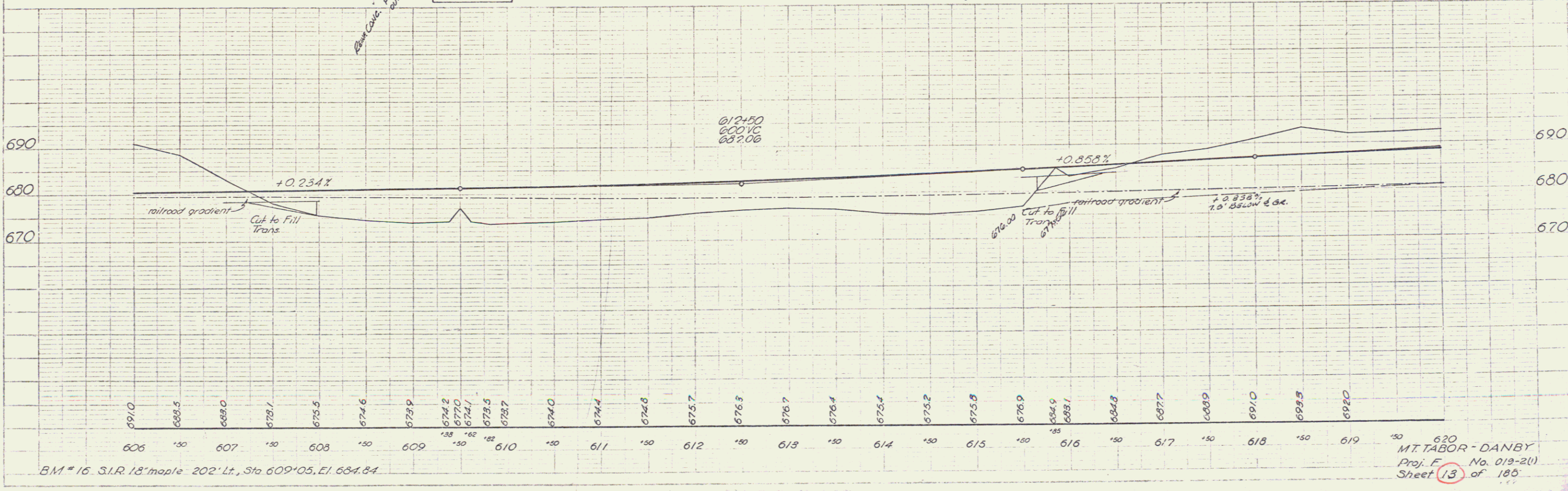
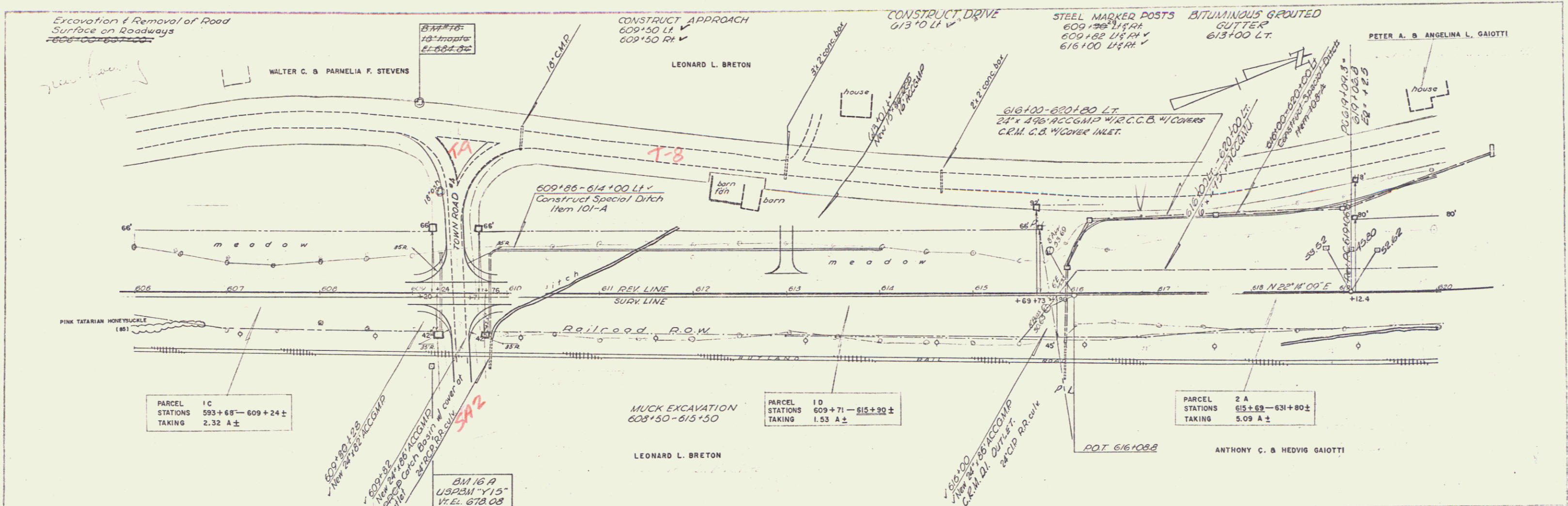
LEONARD L. BRETON

FED. ROAD DIST. NO.	STATE	FED. AID (%)	YEAR	TOTAL SHEETS
2	VT	75	1950	100

Control of section of highway relinquished and returned to The Town of Mt. Tabor, beginning at a point in the center of the former State Highway, Route U.S. 7, said point being 120 feet left or westerly of survey station 604+00 of the established center line of highway Project F-019-2(1) (formerly F-12(5)), and continuing northerly 0.57 mile, more or less, to a point 40 feet left or westerly of survey station 634+15 of said established center line, and recorded in Mt. Tabor Land Records Book 15 Page 279.  
SEE SHEETS 13 & 14.

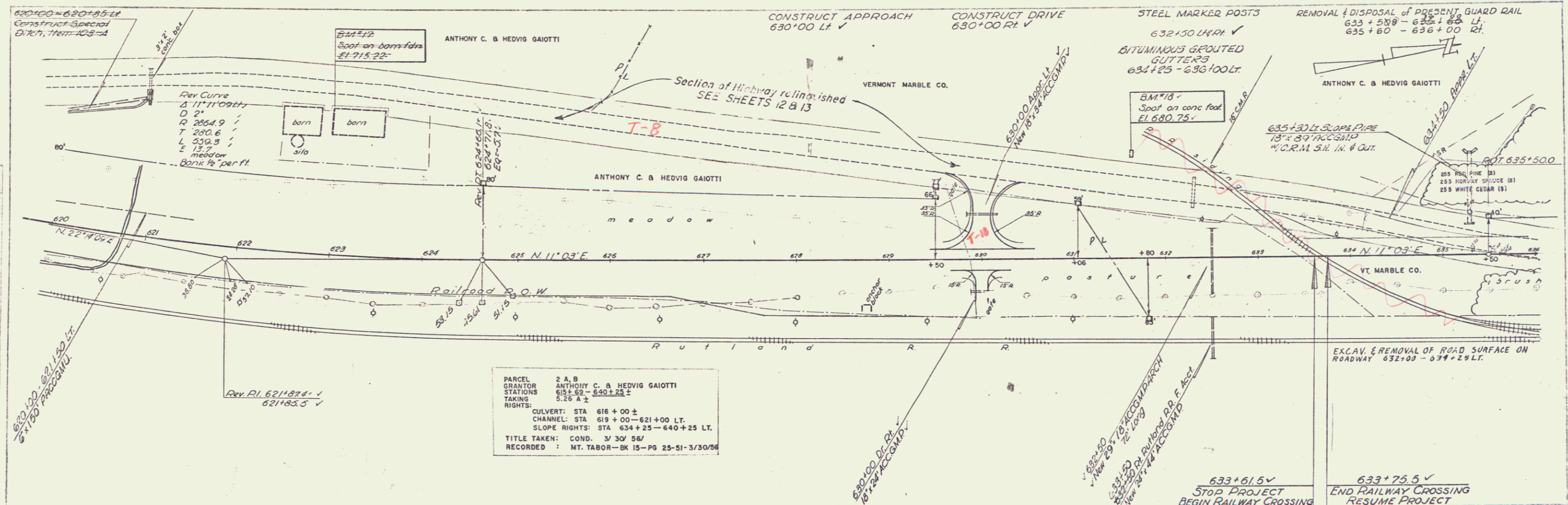


Mt. Tabor-Danby-F-019-2(1)  
Sheet 12 of 100 Sheets

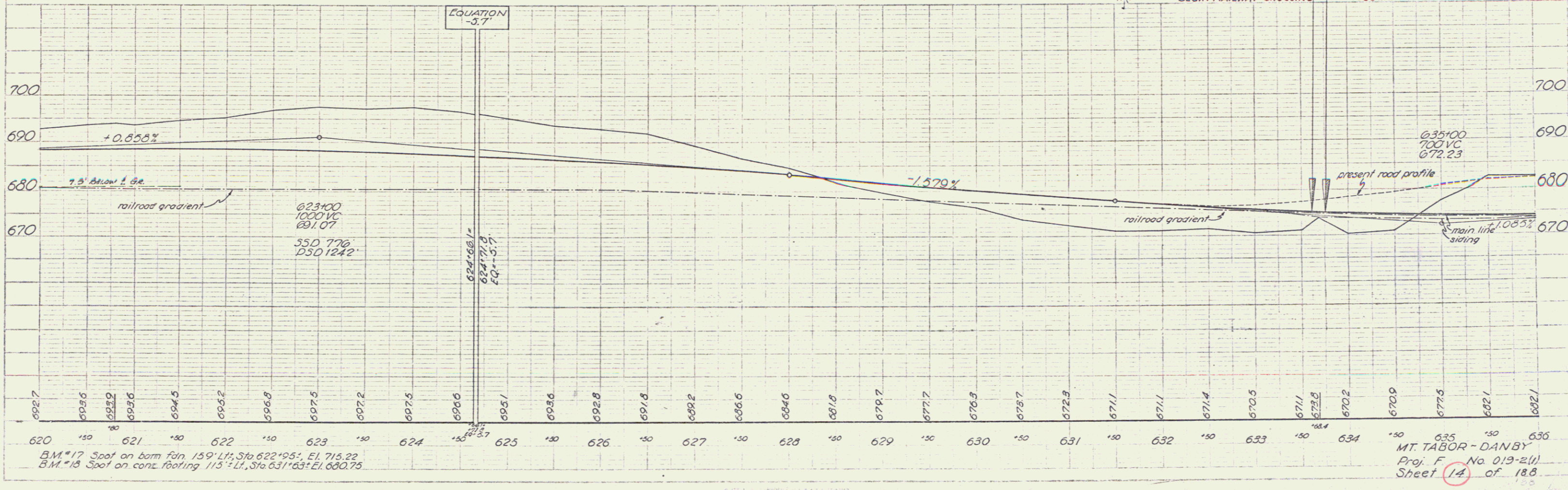


BM # 16 S.I.R. 18' maple 202' Lt., Sta 609+05, El. 684.84

620  
MT. TABOR - DANBY  
Proj. F. No. 019-2(1)  
Sheet 13 of 185

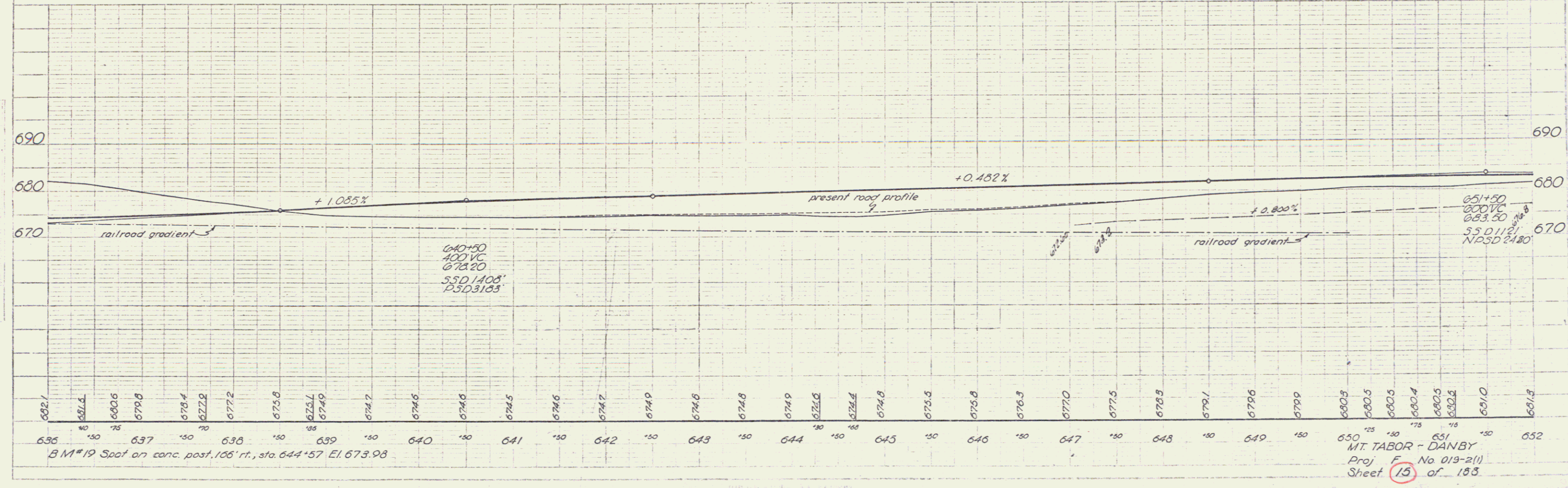
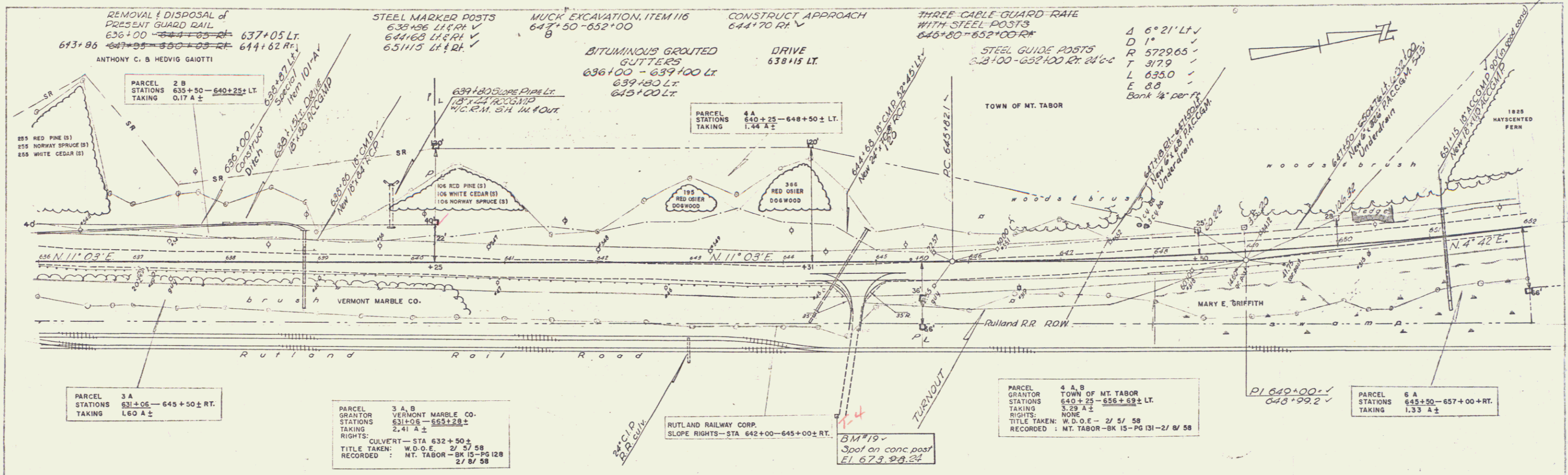


PARCEL 2 A, B  
 GRANTOR ANTHONY C. & HEDVIG GIAIOTTI  
 STATIONS 615+50 - 640+25 ±  
 TAKING 5.26 A ±  
 RIGHTS: CULVERT: STA 616+00 ±  
 CHANNEL: STA 619+00 - 621+00 LT.  
 SLOPE RIGHTS: STA 634+25 - 640+25 LT.  
 TITLE TAKEN: COND. 3/30/56  
 RECORDED: MT. TABOR - BK 15 - PG 25-51-3/30/56



BM #17 Spot on barn fin 159' Lt, Sta 622+95, El. 715.22  
 BM #18 Spot on conc footing 115' Lt, Sta 631+63, El. 680.75

MT. TABOR - DANBY  
 Proj. F No. 019-2(1)  
 Sheet 14 of 18.8

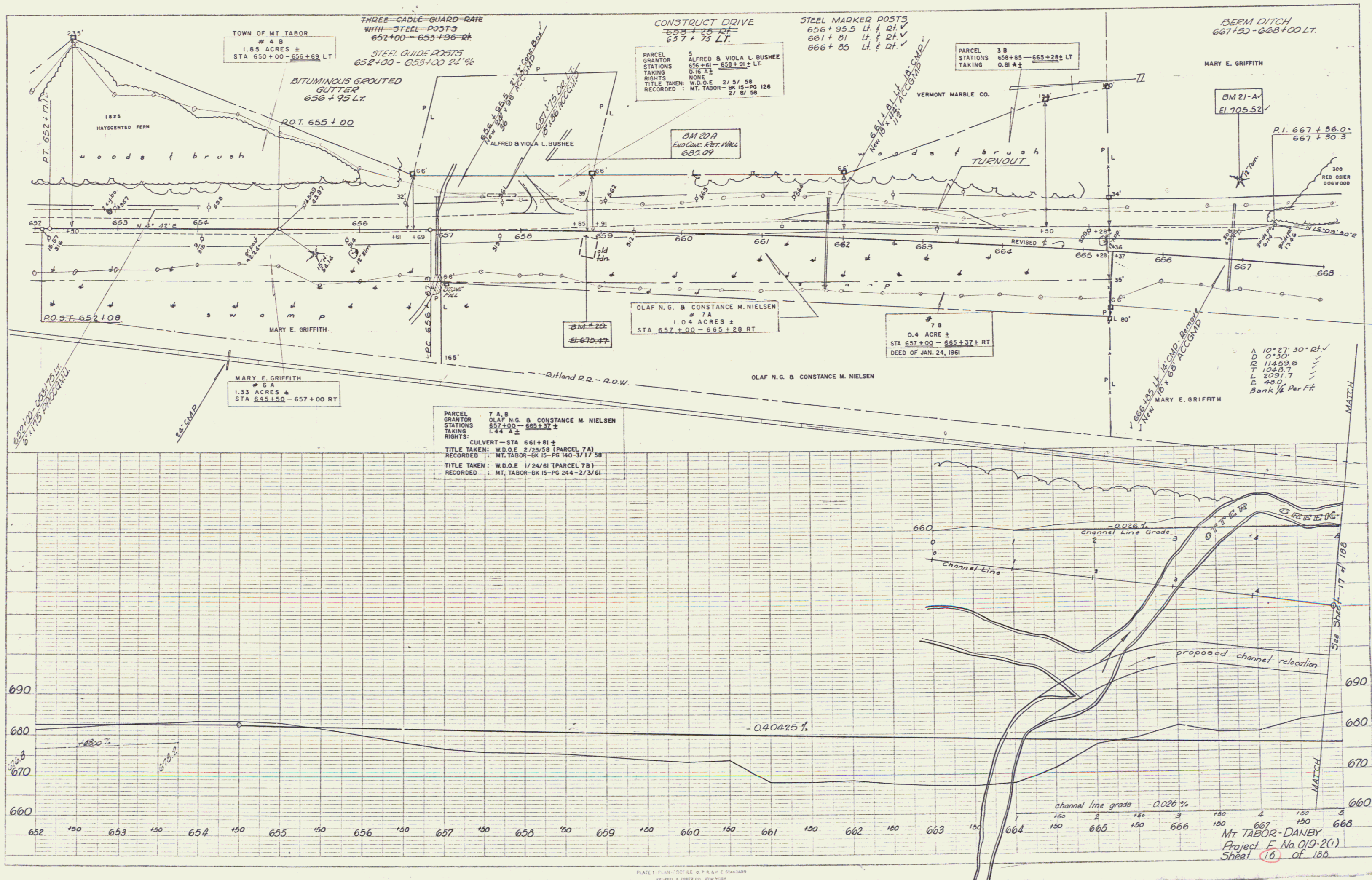


PLAN  
NOTES  
1. ALL DIMENSIONS ARE IN FEET UNLESS OTHERWISE SPECIFIED.  
2. ALL ANGLES ARE IN DEGREES AND MINUTES.  
3. ALL CURVES ARE TO BE CONSTRUCTED ACCORDING TO THE STANDARD PRACTICES OF THE PROFESSION.

PROFILE  
NOTES  
1. ALL ELEVATIONS ARE IN FEET UNLESS OTHERWISE SPECIFIED.  
2. ALL GRADES ARE IN PERCENTS UNLESS OTHERWISE SPECIFIED.  
3. ALL VERTICAL CURVES ARE TO BE CONSTRUCTED ACCORDING TO THE STANDARD PRACTICES OF THE PROFESSION.

PLAN  
 SCALE: AS SHOWN  
 DATE: 10/60

PROFILE  
 SCALE: AS SHOWN  
 DATE: 10/60



PLAN  
 MARY E. GRIFFITH  
 CHANNEL RELOCATION  
 SHEET 17 OF 188

PROFILE  
 MARY E. GRIFFITH  
 CHANNEL RELOCATION  
 SHEET 17 OF 188

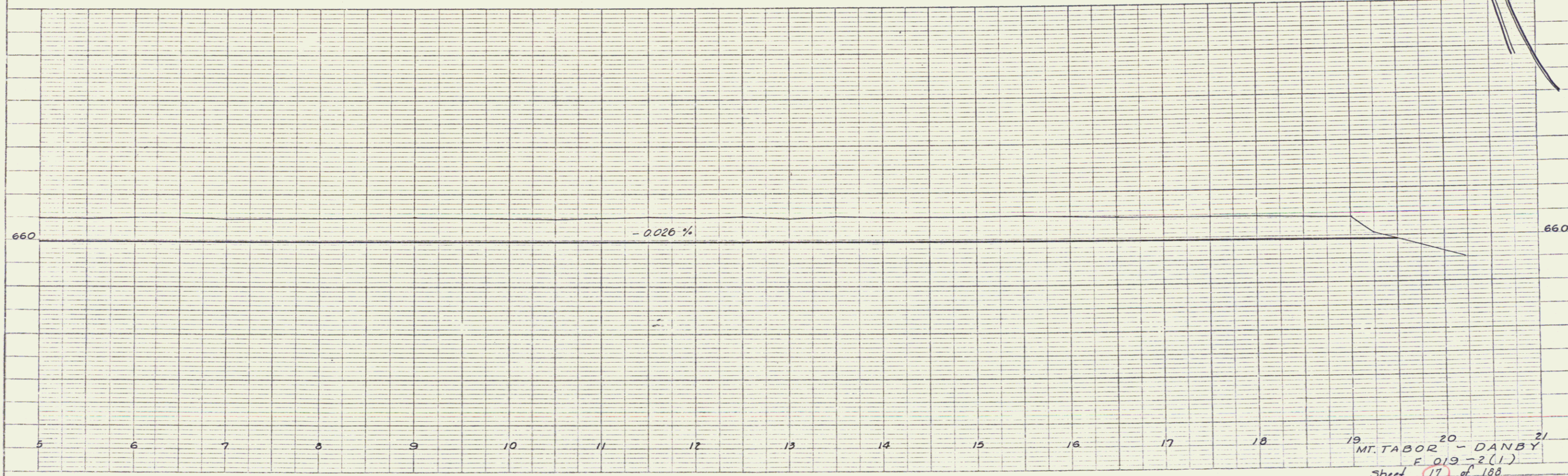
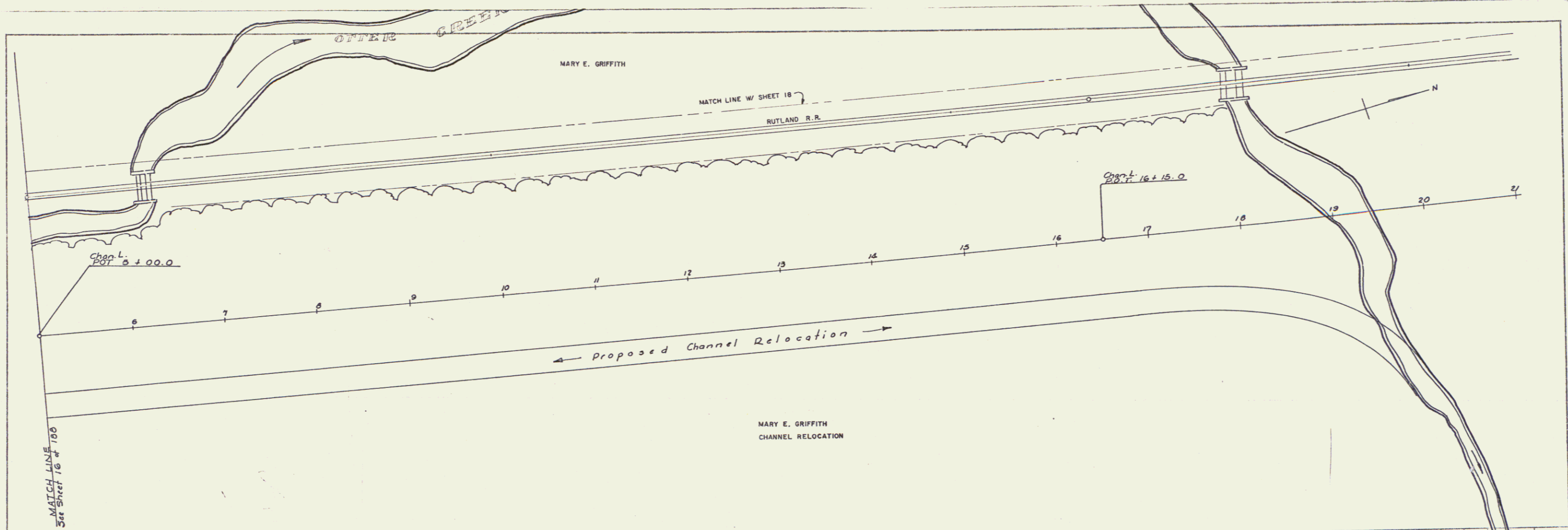


PLATE 1 - PLAN - PROFILE - G. P. R. & E. STANLARD  
 REYNOLDS & ESSER CO., NEW YORK.

19 MT. TABOR 20 - DANBY 21  
 F 019 - 2(1)  
 Sheet 17 of 188

STEEL MARKED POSTS  
 669+25 Lt. & Rt. ✓  
 672+50 Lt. & Rt. ✓  
 680+50 Lt. & Rt. ✓  
 29

REMOVAL & DISPOSAL of  
 PRESENT GUARD RAIL  
 670+15 - 670+85 Rt.  
 670+21 - 671+30 Lt.

CONSTRUCT APPROACH  
 669+75 Lt. ✓  
 681+50 Lt. ✓

APPROACH P.O.T. 61084  
 VERMONT R.O.T. 111787

SEE THREE-CABLE GUARD RAIL  
 SHEET 29 WITH STEEL POSTS  
 682+00 - 683+12-24  
 681+75 - 683+12-14  
 680+72 - 681+25-24  
 680+72 - 681+08 Lt.

BERM DITCHES  
 668+00 - 669+75 Lt.  
 670+00 - 675+50 Lt.  
 682+00 - 681+00 Lt.

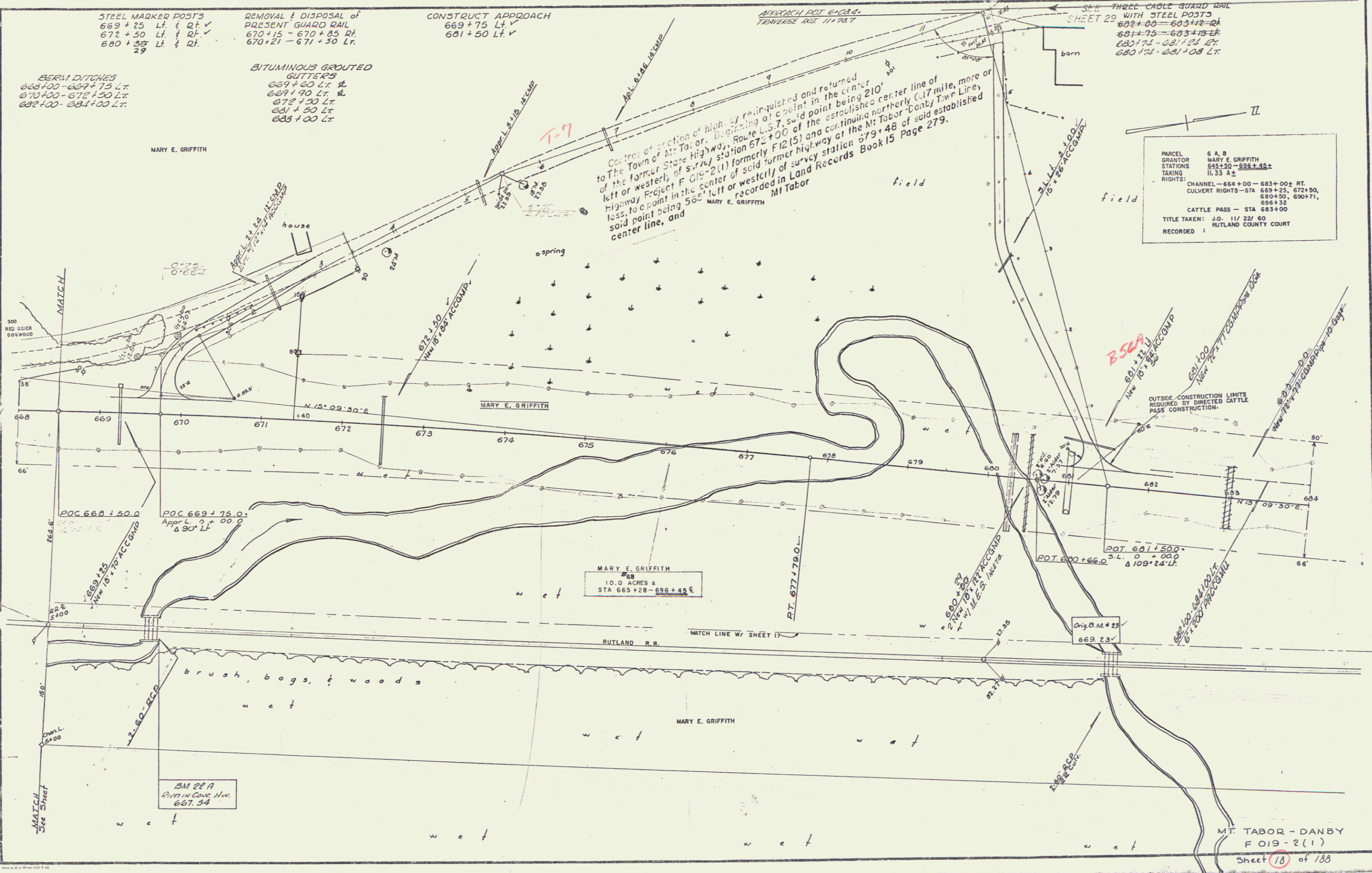
BITUMINOUS GROUTED  
 GUTTERS  
 669+60 Lt. &  
 669+90 Lt. &  
 672+30 Lt. &  
 681+50 Lt. &  
 688+00 Lt. &

MARY E. GRIFFITH

Control of section of highway relinquished and returned  
 to the Town of Mt. Tabor. Beginning at a point in the center  
 of the former State Highway, Route U.S. 7, said point being 210'  
 left or westerly of survey station 672+00 of the established center line of  
 Highway Project F 019-2(1) formerly F 12(5) and continuing northerly  
 1555, to a point in the center of said former highway at the Mt. Tabor-Danby Town Line,  
 said point being 565' left or westerly of survey station 579+48 of said established  
 center line, and  
 MARY E. GRIFFITH  
 Mt. Tabor

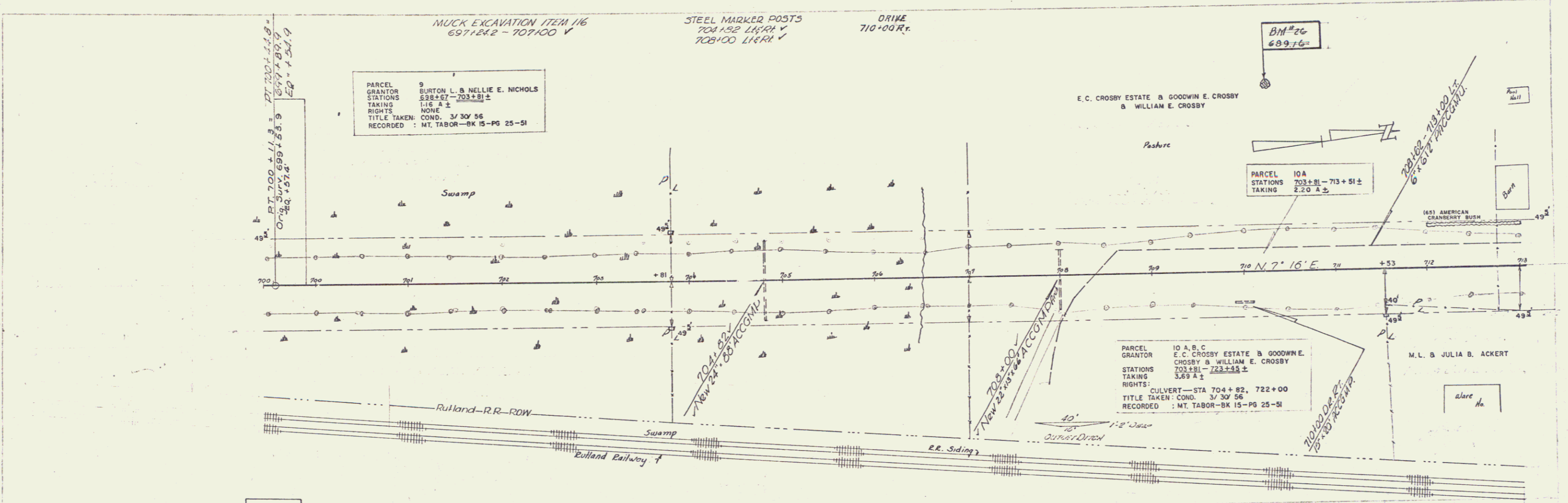
PARCEL 6 A, B  
 GRANTOR MARY E. GRIFFITH  
 STATIONS 665+50 - 696+45±  
 TAKING 11.33 A±  
 RIGHTS: CHANNEL - 664+00 - 683+00± RT.  
 CULVERT RIGHTS - STA 669+25, 672+50,  
 680+50, 680+71,  
 696+32  
 CATTLE PASS - STA 683+00  
 TITLE TAKEN: J.O. 111 221 60  
 RUTLAND COUNTY COURT  
 RECORDED 1

DATE	10/20/66
BY	J.P. Manning
REVISION	
DATE	10/27/66
BY	
REVISION	
DATE	
BY	



MT. TABOR - DANBY  
 F 019-2(1)  
 Sheet 18 of 188





PARCEL 9  
 GRANTOR BURTON L. & NELLIE E. NICHOLS  
 STATIONS 698±81 - 703±81±  
 TAKING 1.16 A ±  
 RIGHTS NONE  
 TITLE TAKEN COND. 3/30/56  
 RECORDED : MT. TABOR-BK 15-PG 25-51

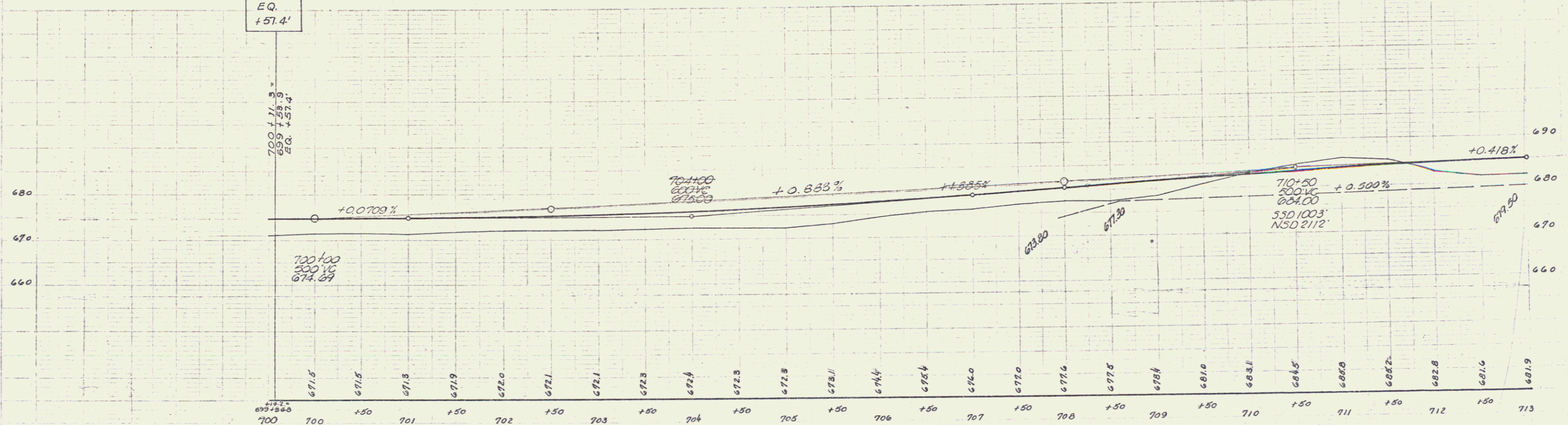
E. C. CROSBY ESTATE & GOODWIN E. CROSBY  
 & WILLIAM E. CROSBY

PARCEL 10A  
 STATIONS 703±81 - 713±81±  
 TAKING 2.20 A ±

PARCEL 10 A, B, C  
 GRANTOR E. C. CROSBY ESTATE & GOODWIN E. CROSBY  
 & WILLIAM E. CROSBY  
 STATIONS 703±81 - 723±81±  
 TAKING 3.69 A ±  
 RIGHTS CULVERT—STA 704+82, 722+00  
 TITLE TAKEN: COND. 3/30/56  
 RECORDED : MT. TABOR-BK 15-PG 25-51

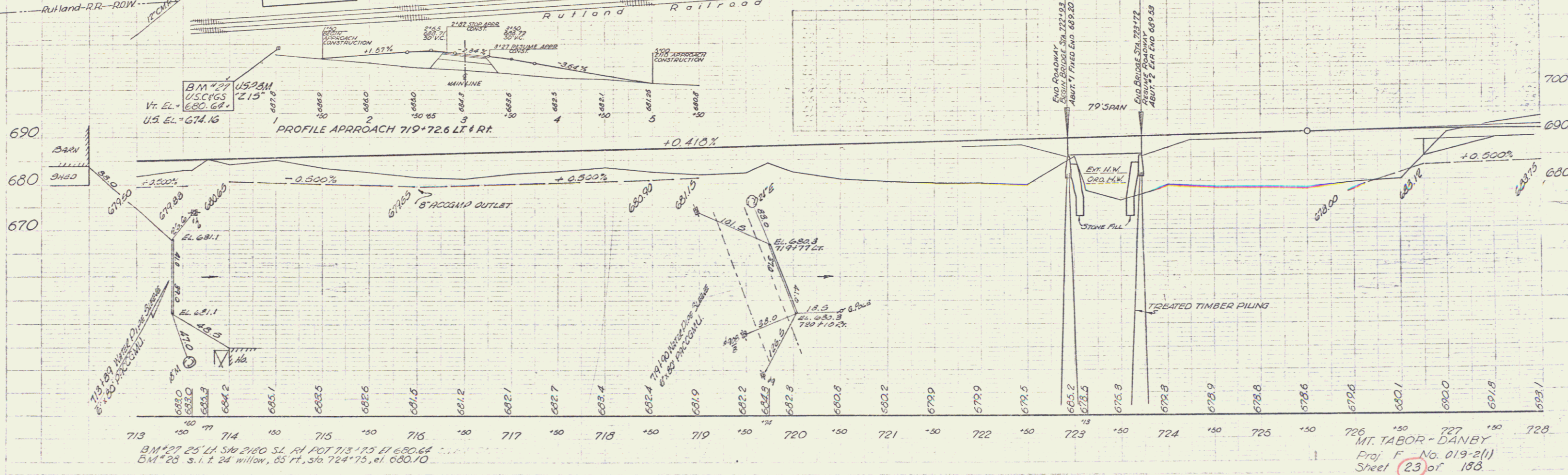
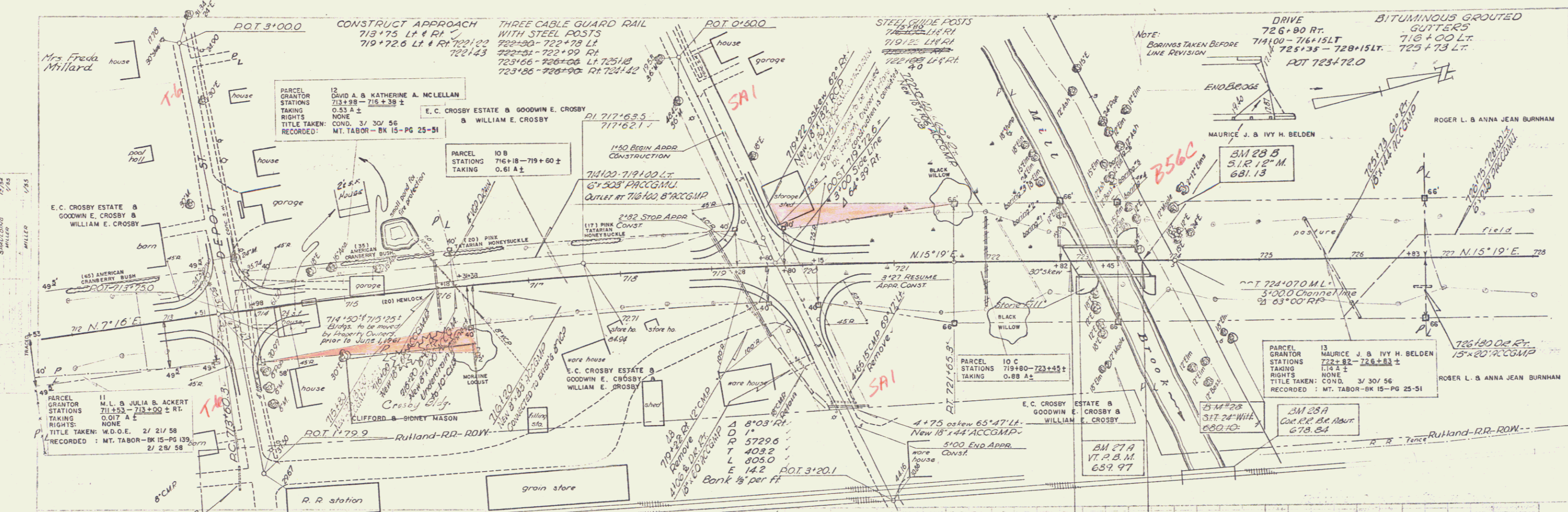
M. L. & JULIA B. ACKERT

E.Q.  
 +57.4'



BM #26 SPIKE IN ROOT 14' APPLE 200' LT. STA 710+25 ELEV 689.16

MT TABOR - DANBY  
 Proj. F. No. 013-2(1)  
 Sheet 22 of 138

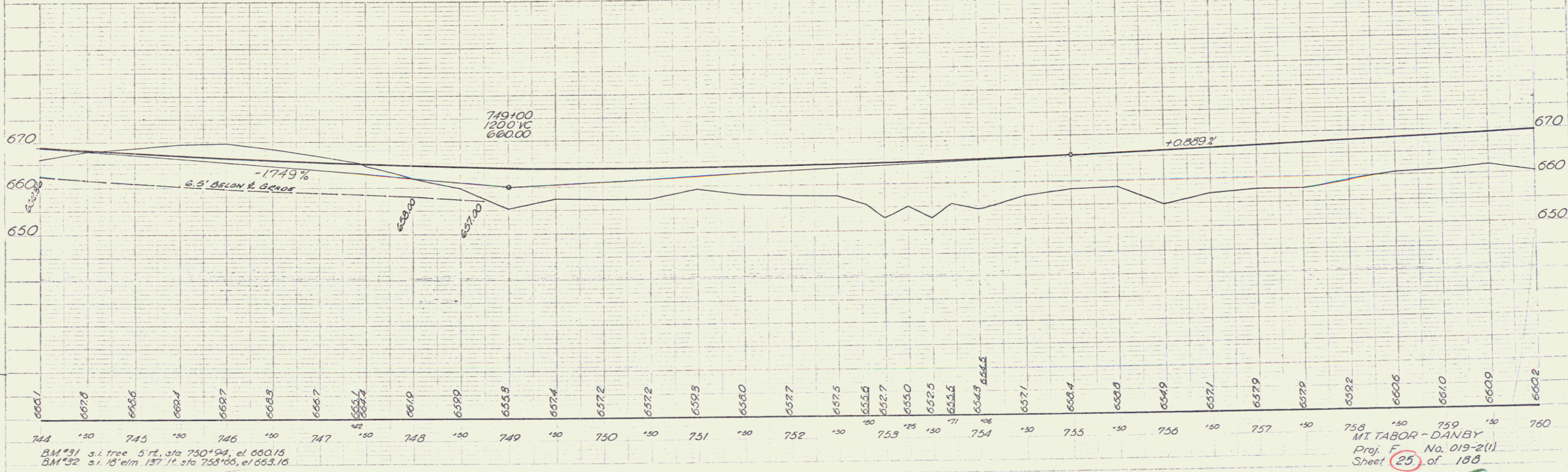
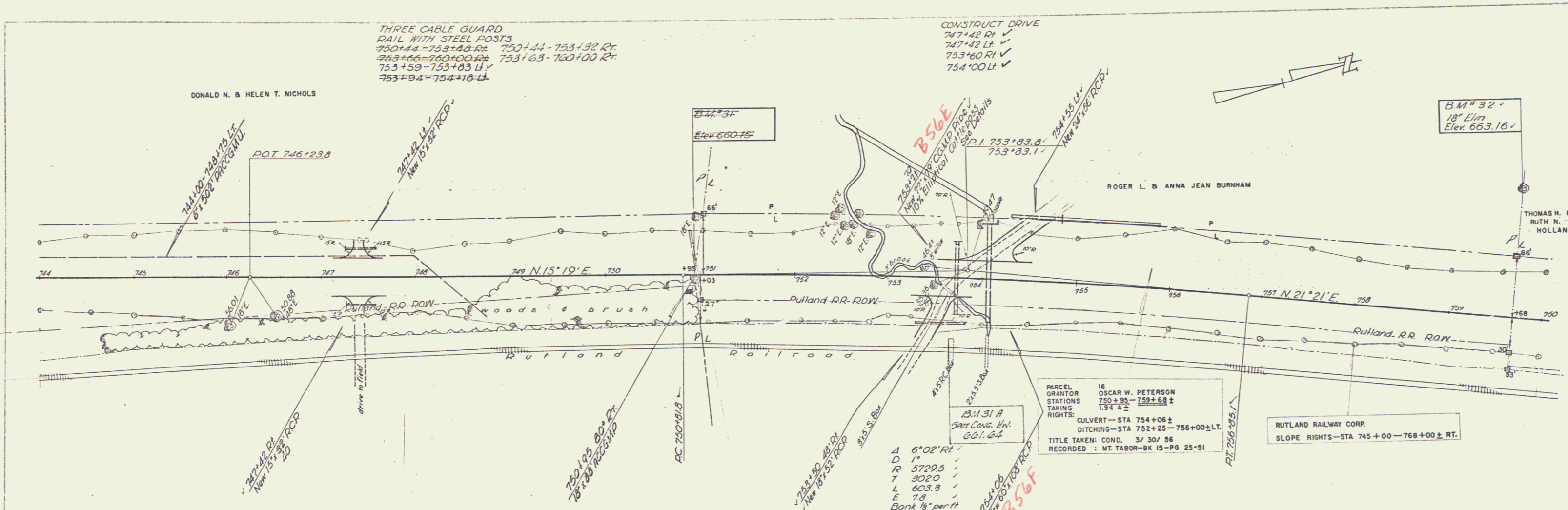


BM #27 25' LT. STA 2100 SL. RI. POT 713+75 EL. 680.64  
 BM #28 s.i. t. 24 willow, 65 ft, sta 724+75, el. 680.10  
 MT. TABOR - DANBY  
 Proj. No. 019-2(1)  
 Sheet 23 of 198





SHILOH  
MILLER  
1/24  
1/25



BM #31 s.i. tree 5 ft. sta 750+24, el. 660.15  
 BM #32 s.i. 18' elm 137 ft. sta 753+06, el. 663.16

MT. TABOR - DANBY  
 Proj. F No. 019-2(1)  
 Sheet 25 of 188

15

THREE CABLE GUARD  
RAIL WITH STEEL POSTS  
760+00 - 769+34 Rt. 1371.41 E.  
762+00 - 765+52 Lt.  
774+16 - 776+00 Rt.  
774+10 - 775+78 Lt. 774+30 - 775+90 Lt.

STEEL MARKED POSTS  
763+50 Lt. & Rt.

CONSTRUCT DRIVE  
774+00 Lt. & Rt. ✓

SCALE  
1" = 40'  
1/4" = 10'  
1/8" = 5'  
DATE  
DRAWN  
CHECKED  
APPROVED  
MILLER

PARCEL L7  
GRANTOR THOMAS H. & RUTH A. HOLLAND  
STATIONS 759±58 - 774±32±  
TAKING RIGHTS: 4.57 A±  
CULVERT - 763+50±  
TITLE TAKEN: COND. 3/30/56  
RECORDED: MT. TABOR-BK 15-PG 25-51

B.M.#33  
24' elm  
Elev. 690.70

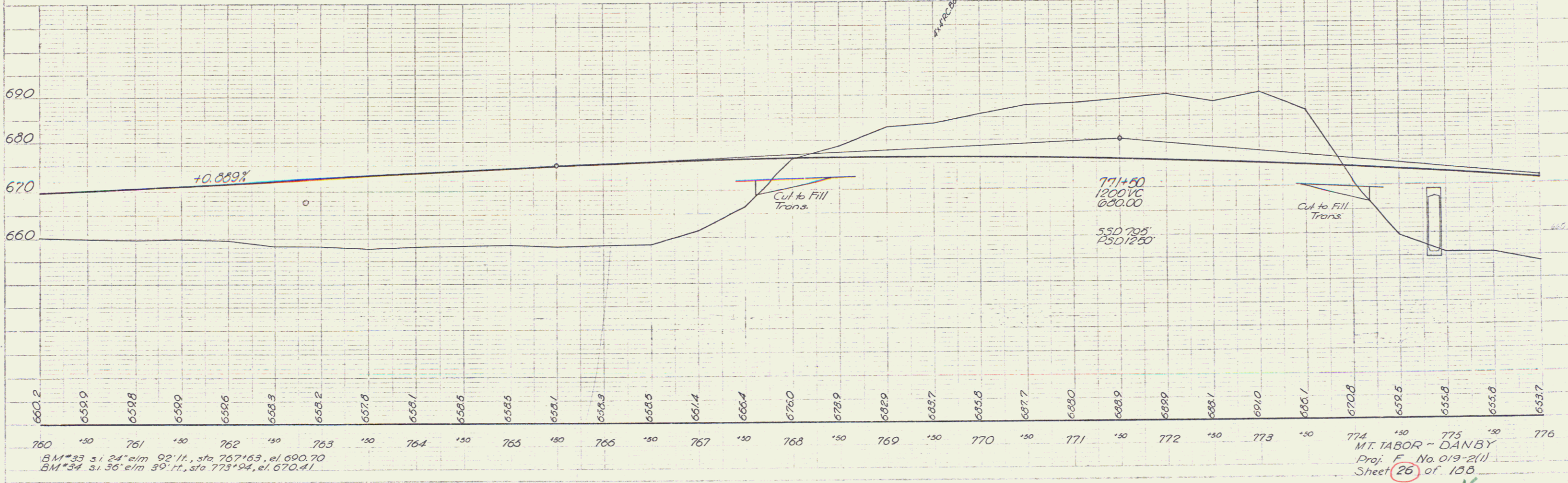
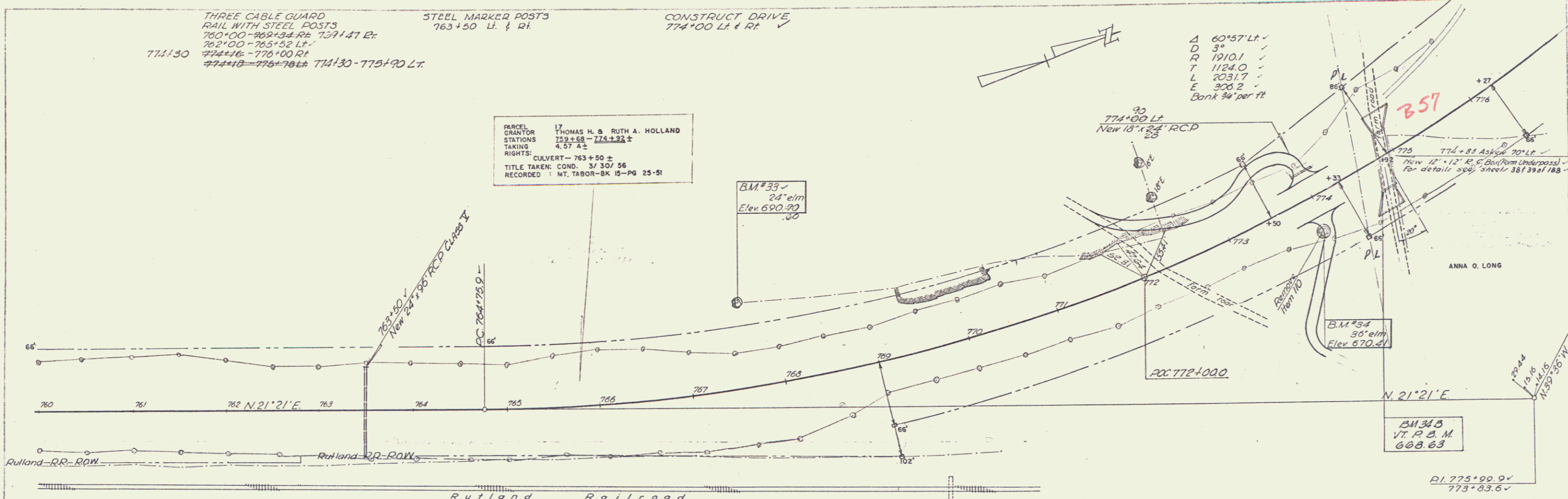
A 60°57' Lt. ✓  
D 3° ✓  
R 1910.1 ✓  
T 1124.0 ✓  
L 2031.7 ✓  
E 306.2 ✓  
Bank 94' per ft.

774+00 Lt.  
New 18" x 24" R.C.P.

B.M.#34  
30' elm  
Elev. 670.41

B.M.#35  
V.P. D.M.  
668.63

R.I. 775+99.9' ✓  
775+83.6 ✓

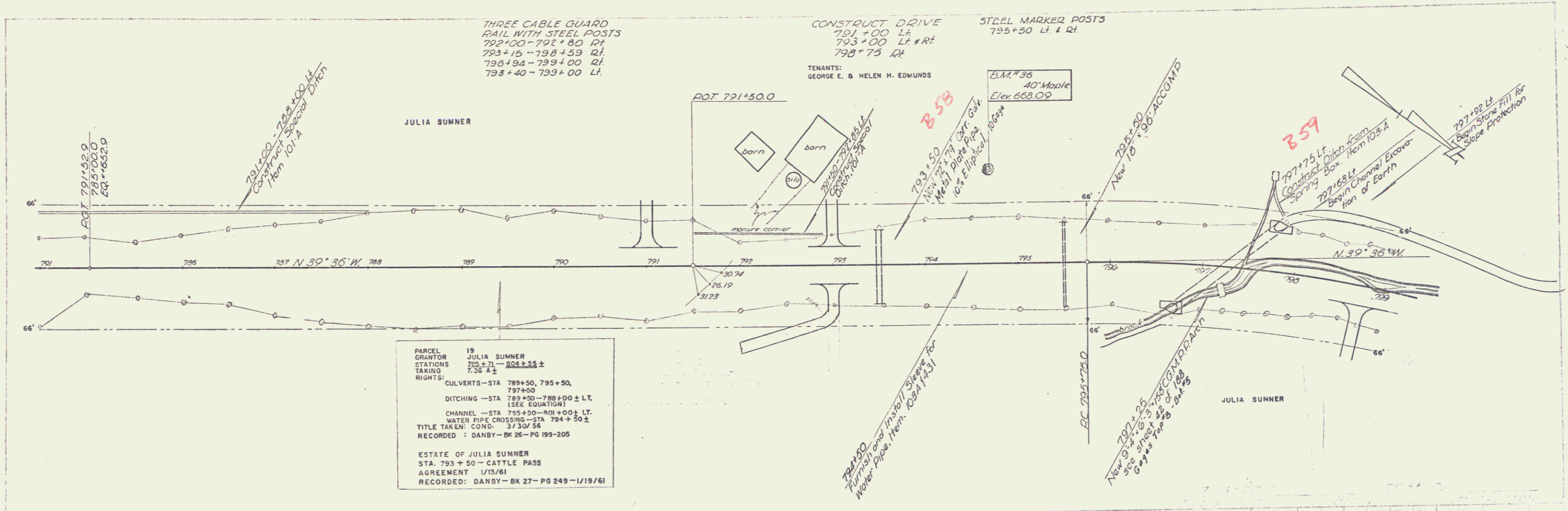


B.M.#33 s. 24' elm 92' ft. sta 767+63, el. 690.70  
B.M.#34 s. 36' elm 30' ft. sta 773+94, el. 670.41

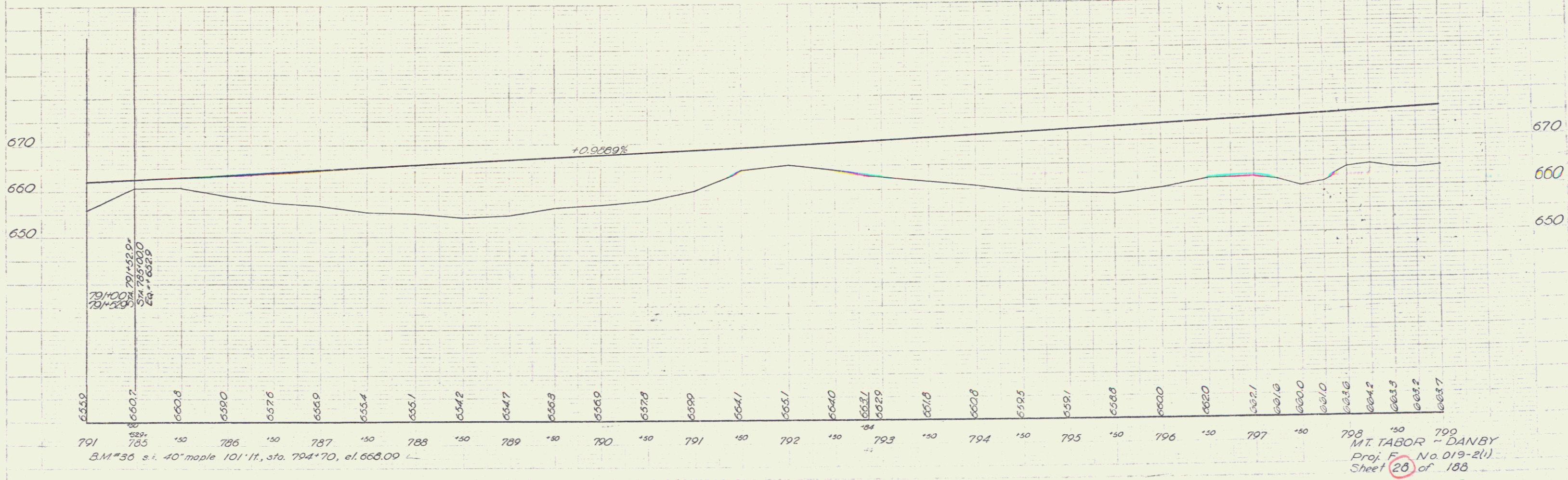
MT. TABOR - DANBY  
Proj. F. No. 019-2(1)  
Sheet 26 of 108



SWISSING  
MILLER  
1/75  
TRAILED



PARCEL 19  
GRANTOR JULIA SUMNER  
STATIONS 785+71 - 801+55 ±  
TAKING 7.36 A ±  
RIGHTS:  
CULVERTS - STA 789+50 - 795+50,  
797+50  
DITCHING - STA 789+50 - 788+00 ± LT.  
(SEE EQUATION)  
CHANNEL - STA 795+50 - 801+00 ± LT.  
WATER PIPE CROSSING - STA 794+50 ±  
TITLE TAKEN: COND. 3/30/56  
RECORDED: DANBY - BK 26 - PG 199-205  
  
ESTATE OF JULIA SUMNER  
STA. 793+50 - CATTLE PASS  
AGREEMENT 1/13/61  
RECORDED: DANBY - BK 27 - PG 249 - 1/19/61



798  
MT. TABOR - DANBY  
Proj. F. No. 019-2(1)  
Sheet 28 of 188  
18

THREE CABLE GUARD RAIL WITH STEEL POSTS  
 799+00 - 800+70 RT  
 799+00 - 800+96 LF  
 805+04 - 806+96 RT  
 805+12 - 806+88 LF  
 807+12 - 812+08 LF

REMOVAL / DISPOSAL OF PRESENT GUARD RAIL  
 800+52 - 802+00 LF  
 802+63 - 804+73 LF  
 804+73 - 806+67 LF  
 804+93 - 806+72 LF

CONSTRUCT DRIVE  
 802+17 RT  
 807+00 LF  
 807+08 RT

CONSTRUCT APPROACH  
 802+20 LT

805+30 Non-Govt Part  
 Install sleeve for water pipe across roadway. Item 103-A. Sleeve to be furnished by property owner.

STEEL MARKER POSTS  
 806+47 LT & RT  
 811+43 LT & RT

798+00  
 BEGIN PROJECT  
 FAP 12 (A) 1740

800+85 Lt  
 End Channel Excavation of Earth  
 End Stone Fill for Slope Protection

Control of section of highway, relinquished and returned to The Town of Danby  
 Beginning at a point in the center of the former highway, U.S. Route 7 at the Danby-111 Tabor Turnoff  
 and said point being 553 feet west or westerly of survey station 572+48 of the established center line  
 of Highway Project F019-2(1) (formerly F12(5)), and continuing northerly 2.32 miles more or less, to a point  
 33 feet left or westerly of survey station 803+95 of said established center line, and recorded in  
 Danby Land Records Book-28 - Page 59 SEE SHEET 18

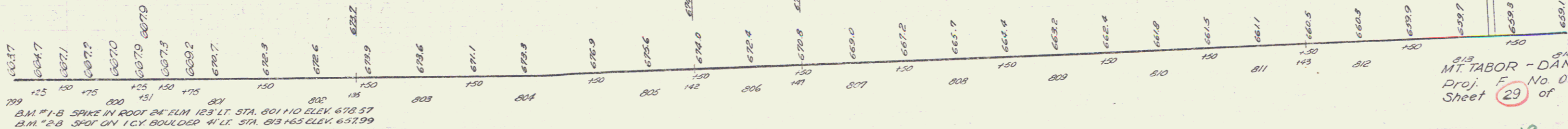
+0.9689%

-2.340%

814+00  
 END PROJECT F019-2(1)

670  
 660  
 650

670  
 660  
 650



B.M. #1-B SPIKE IN ROOT OF ELM 123' LT. STA. 801+10 ELEV. 678.37  
 B.M. #2-B SPOT ON 1 CY BOULDER 41' LT. STA. 813+63 ELEV. 657.99

213  
 MT. TABOR - DANBY  
 Proj. F No 019-2(1)  
 Sheet 29 of 186