

THREE CABLE GUARD  
RAIL WITH STEEL POSTS  
760+00 - 769+34 Rt. 1371.41 E.  
762+00 - 765+52 Lt.  
774+16 - 776+00 Rt.  
774+18 - 775+78 Lt. 774+30 - 775+90 Lt.

STEEL MARKED POSTS  
763+50 Lt. & Rt.

CONSTRUCT DRIVE  
774+00 Lt. & Rt. ✓

SCALE  
1" = 40'  
1" = 80'  
1" = 160'  
DATE  
DRAWN  
CHECKED  
APPROVED  
MILLER

PARCEL L7  
GRANTOR THOMAS H. & RUTH A. HOLLAND  
STATIONS 759±58 - 774±32±  
TAKING 4.57 A±  
RIGHTS: CULVERT - 763+50±  
TITLE TAKEN: COND. 3/ 30/ 56  
RECORDED: MT. TABOR-BK 15-PG 25-51

B.M.#33  
24' elm  
Elev. 690.70

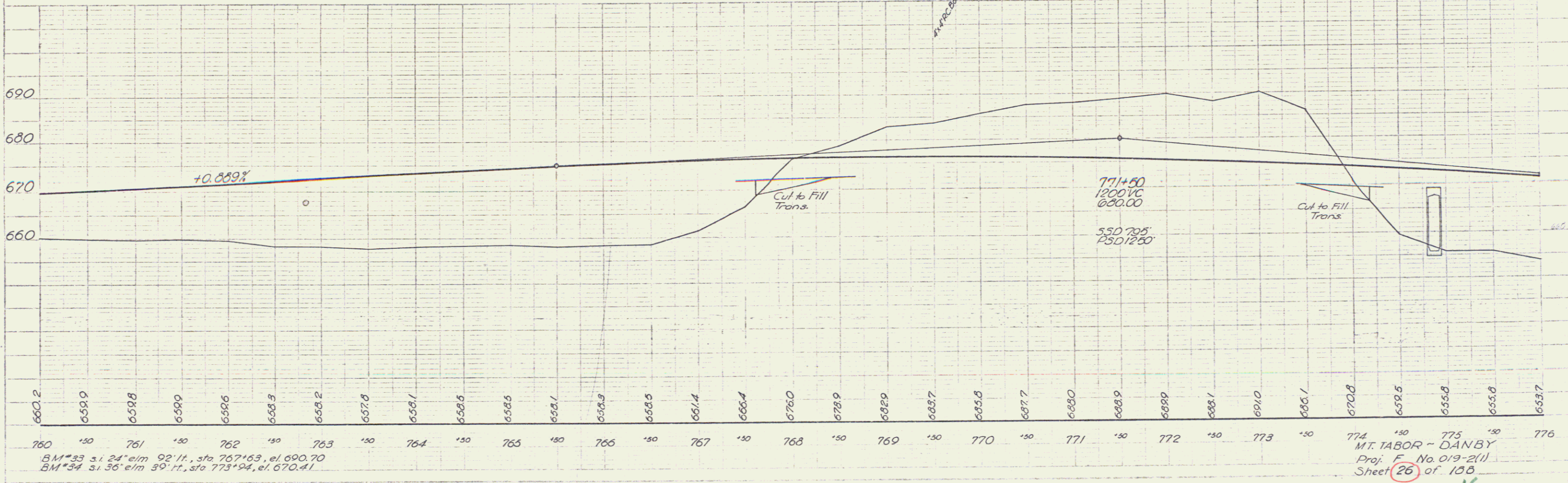
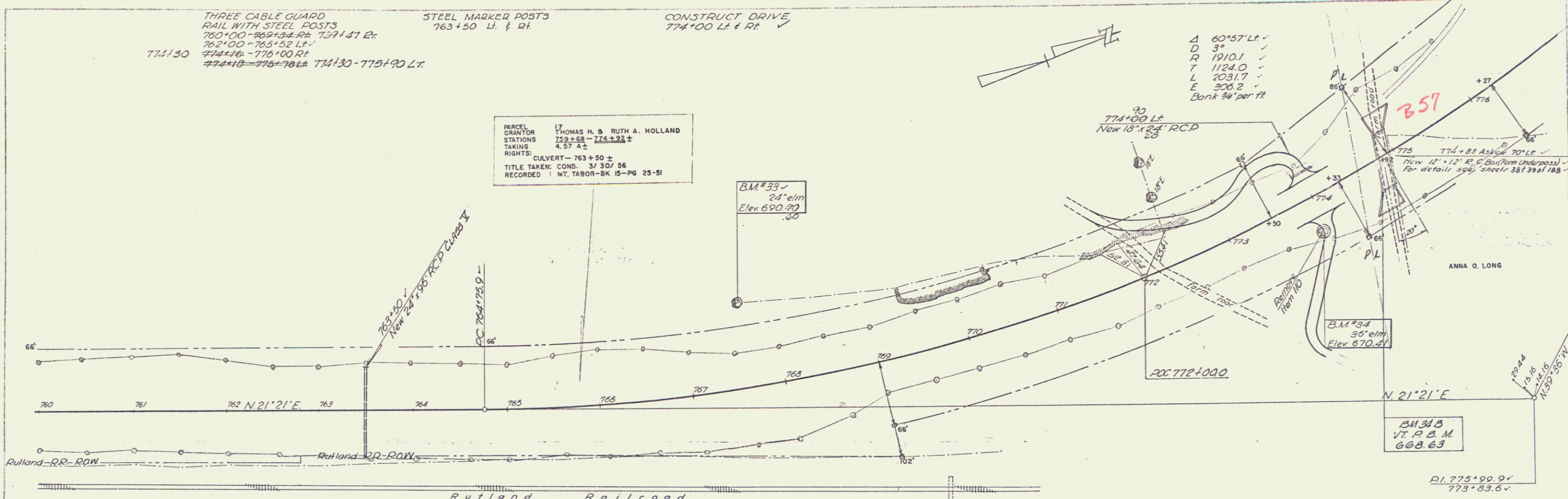
A 60°57' Lt. ✓  
D 3° ✓  
R 1910.1 ✓  
T 1124.0 ✓  
L 2031.7 ✓  
E 306.2 ✓  
Bank 94' per ft.

774+00 Lt.  
New 18" x 24" R.C.P.

B.M.#34  
30' elm  
Elev. 670.41

B.M.#35  
V.P. D. M.  
668.63

R.I. 775+99.9' ✓  
775+83.6 ✓



B.M.#33 s. 24' elm 92' ft. sta 767+63, el. 690.70  
B.M.#34 s. 36' elm 30' ft. sta 773+94, el. 670.41

MT. TABOR - DANBY  
Proj. F. No. 019-2(1)  
Sheet 26 of 108