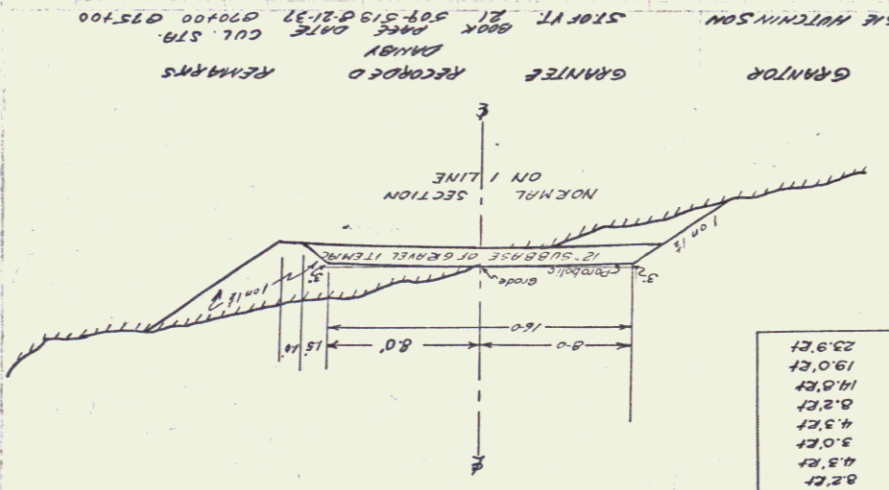


NON-GOVERNMENT PARTICIPATION
SHEET 13 OF 10
STAIRS MAP NO. 12(15)

I LINE

BM G.B SPIKE IN ROOT OF 6" ELM 21 FT LT OF STA B71+50 (I LINE) ELEV = 665.52

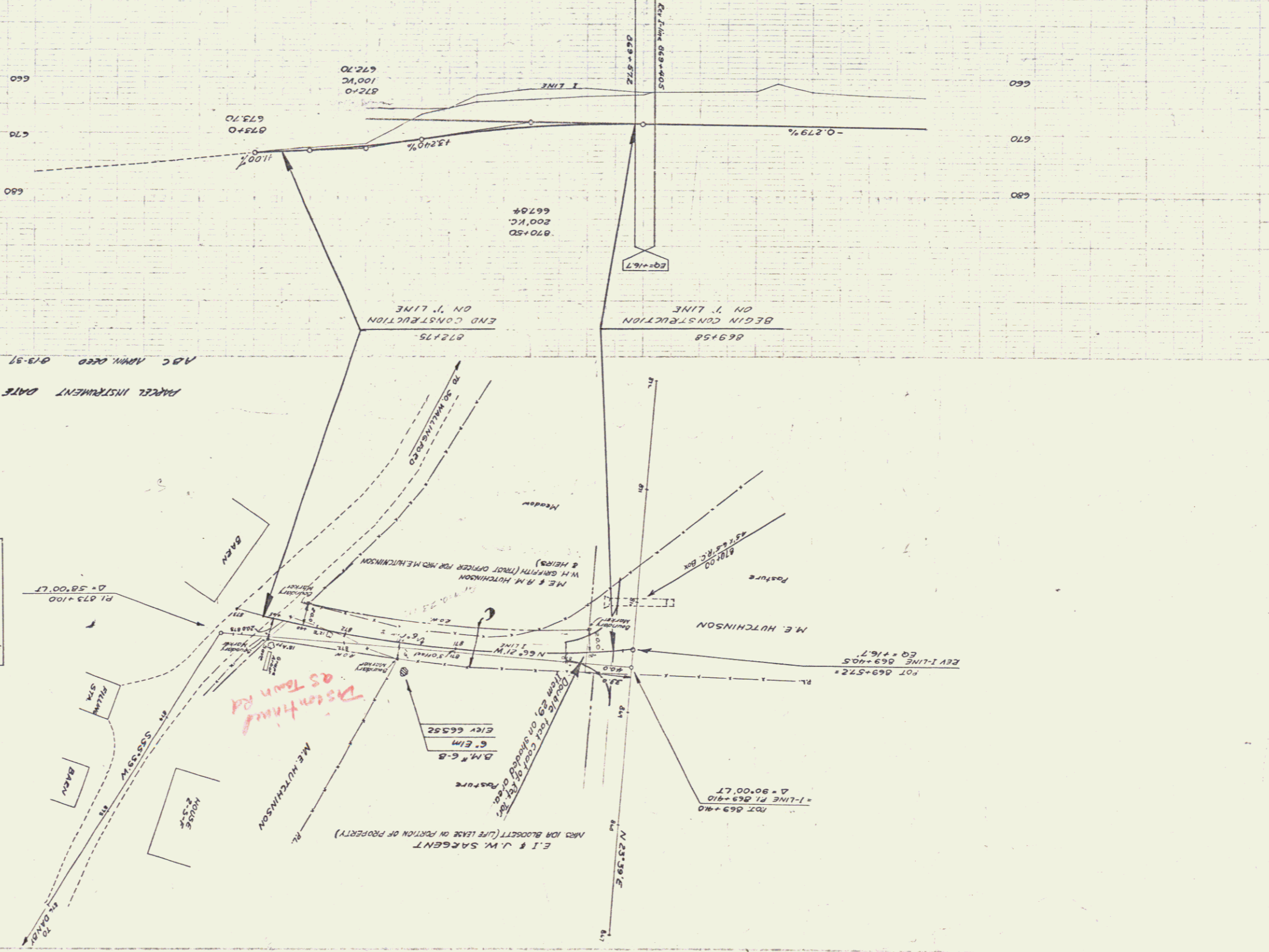
875	677.6
874	676.1
873	674.6
872	673.1
871	671.6
870	670.1
869	668.6
868	667.1
867	665.6
866	664.1
865	662.6
864	661.1
863	659.6
862	658.1
861	656.6
860	655.1
859	653.6
858	652.1
857	650.6



OFFSETS

870	23.92'
+50	19.02'
872	14.12'
+50	9.22'
871	4.32'
+50	3.02'
870	8.52'
869+50	14.62'
869	8.52'

NON-GOV'T
DATE: 1959 73 80



STATION