

INDEX OF SHEETS

STATE OF VERMONT DEPARTMENT OF HIGHWAYS



PROPOSED IMPROVEMENT

TOWN OF BRANDON *Pin# 99R483*

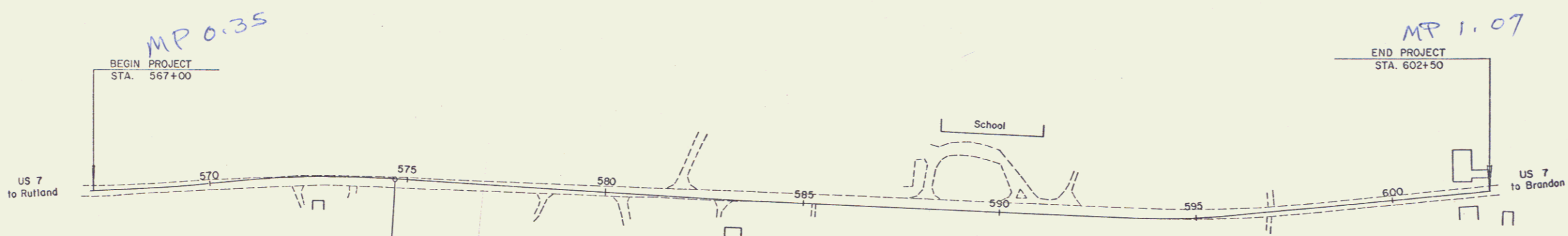
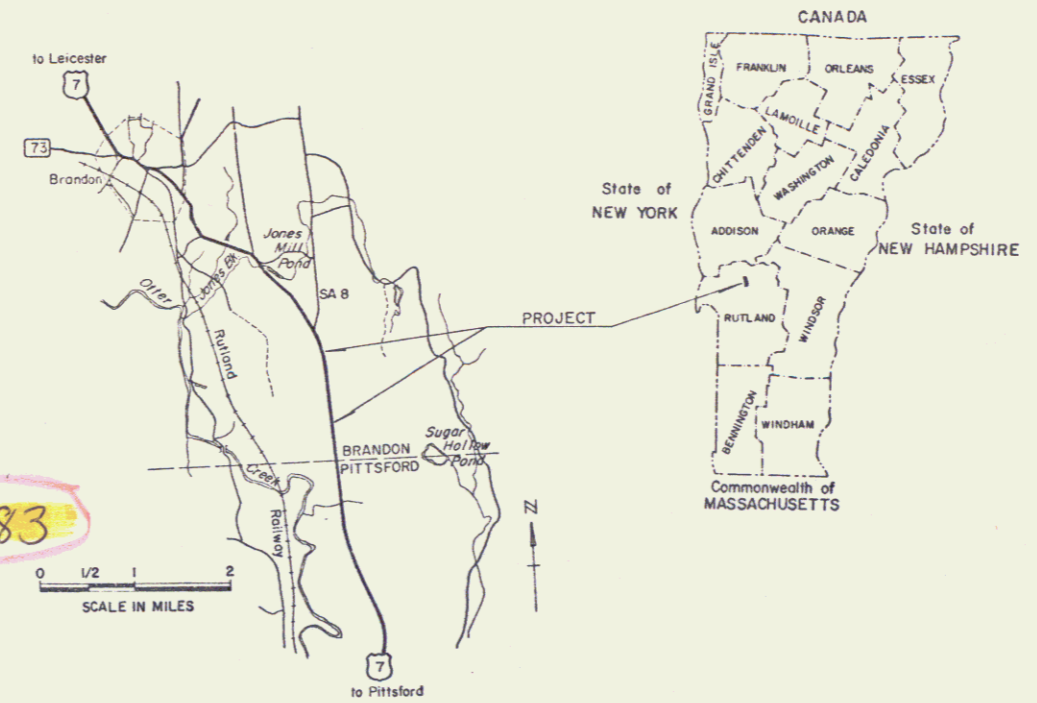
COUNTY OF RUTLAND

U.S. RTE. 7

PITTSFORD-BRANDON ROAD

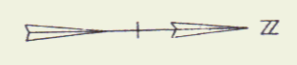
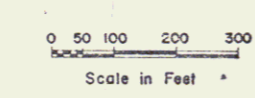
BEGINNING AT A POINT 0.379 MILES NORTHERLY OF THE PITTSFORD/BRANDON TOWN LINE ON RTE. 7, AND EXTENDING NORTHERLY 0.672 MILES.

LENGTH OF ROADWAY 3549.25 FT. = 0.672 MI.
LENGTH OF BRIDGES 0
LENGTH OF PROJECT 3549.25 FT. = 0.672 MI.



CONVENTIONAL SIGNS

COUNTY LINE	---
TOWN LINE	---
LIMITS OF ACCESS	○---○
POINT OF ACCESS	X
FENCE LINE	---X---
STONE WALL	---X---
TRAVELED WAY	---
GUARD RAIL	---X---
RAILROAD	---
SURVEY LINE	---
VERT	○
POLE	○
STONE POLE	○
POST IDENTIFICATION SIGNS	▲
PROPERTY LINE	---
R.O.W. TAKING LINE	---
SLOPE RIGHTS	○ SR ○
TOP OF CUT	△
TOE OF SLOPE	○



RIGHT-OF-WAY DIVISION
TOWN FILE
PERPETUAL
Rte
Town of U.S. 7
(To Be Returned To R.O.W. Division)

project No. BP 019-3-7131

These plans are subject to such engineering changes as may be required by the Federal Highway Administration or the Chief Engineer. Construction is to be carried on in accordance with these plans and the Standard Specifications for Highway and Bridge Construction dated January 3, 1972 as approved by the Federal Highway Administration on December 28, 1971 for use on this project, including all subsequent revisions and such revised specification and special provisions as are incorporated in these plans.

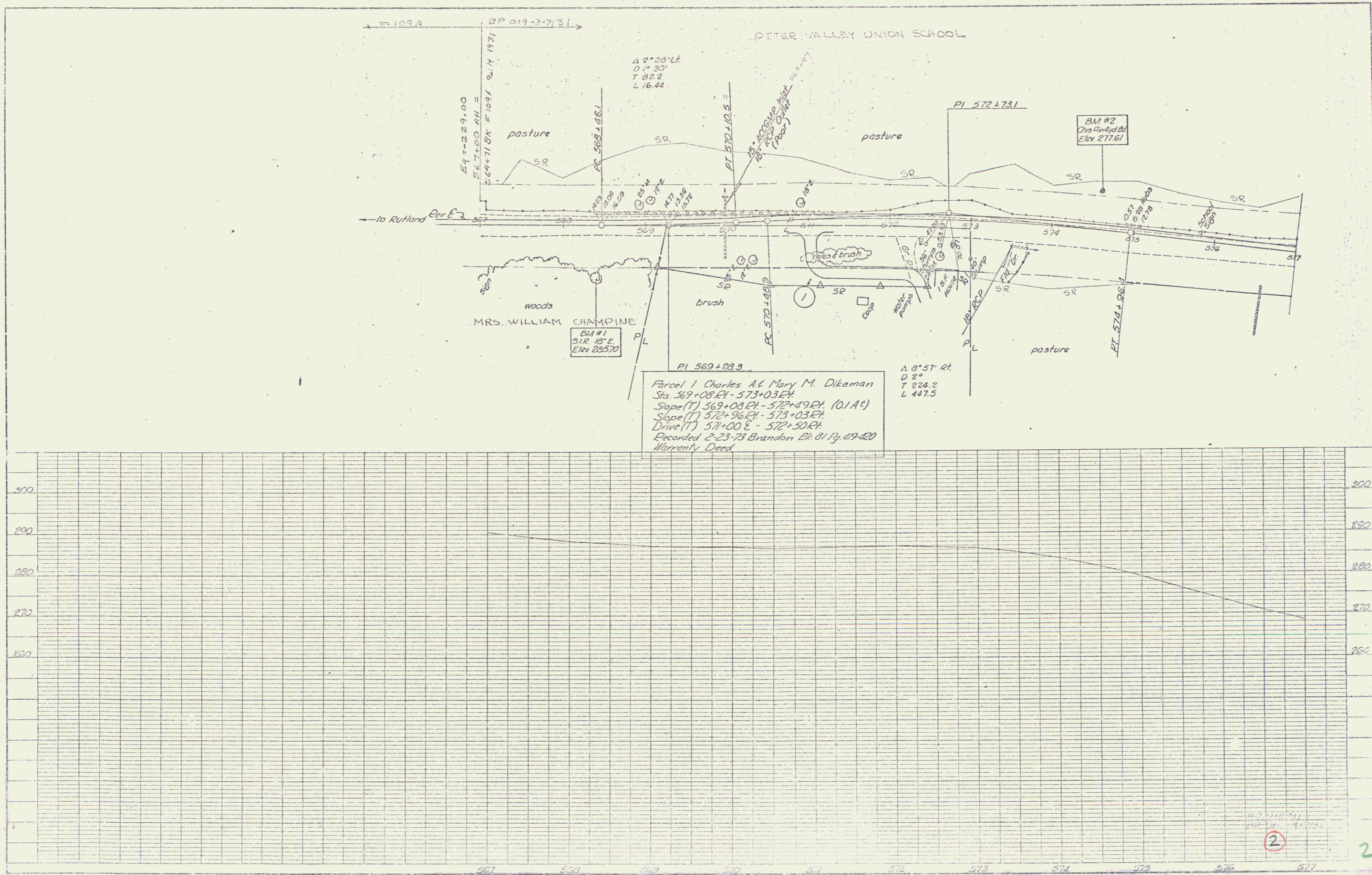
SUBMITTED BY ORDER OF THE STATE HIGHWAY BOARD	
APPROVED _____	DATE _____
CHIEF ENGINEER	
DEPARTMENT OF TRANSPORTATION FEDERAL HIGHWAY ADMINISTRATION	
APPROVED _____	DATE _____
DIVISION ENGINEER	
PROJECT _____	NR _____
SHEET <u>1</u> OF _____	SHEETS _____

BUILT FORCE ACCOUNT - 1973
(For Revised P. & Revised Profile, See Cross Sections)

11/73

PLAN	SCALE
DATE	
BY	
CHECKED	
APPROVED	
DATE	

PROFILE	SCALE
DATE	
BY	
CHECKED	
APPROVED	
DATE	

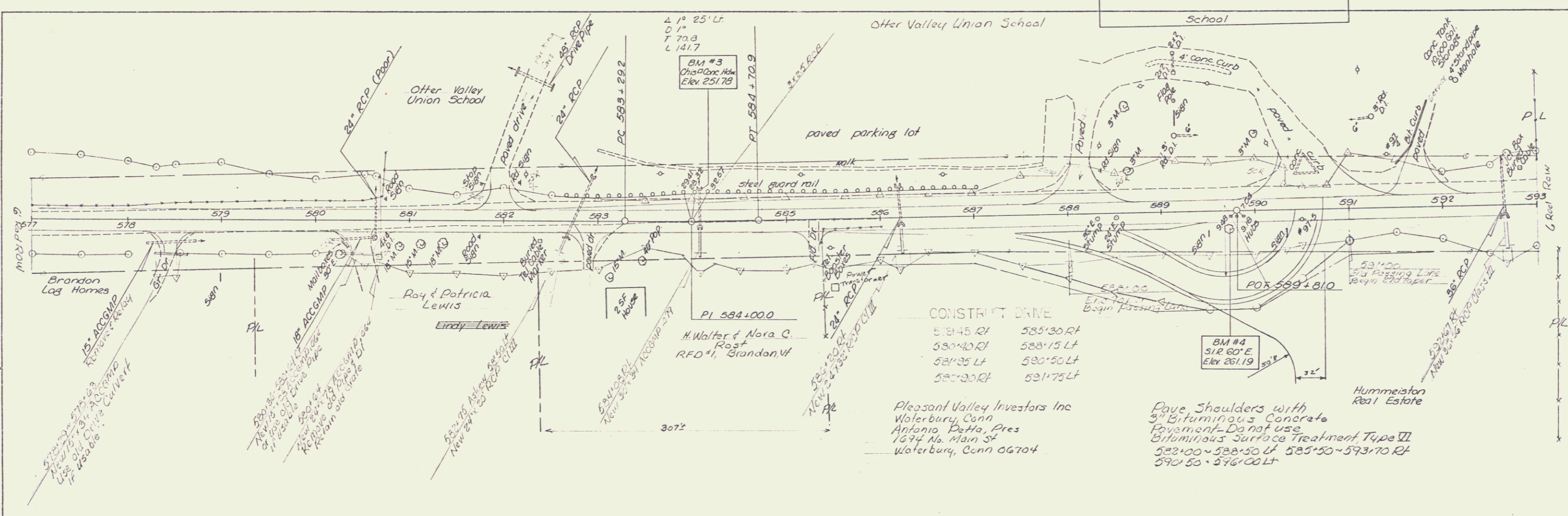


2

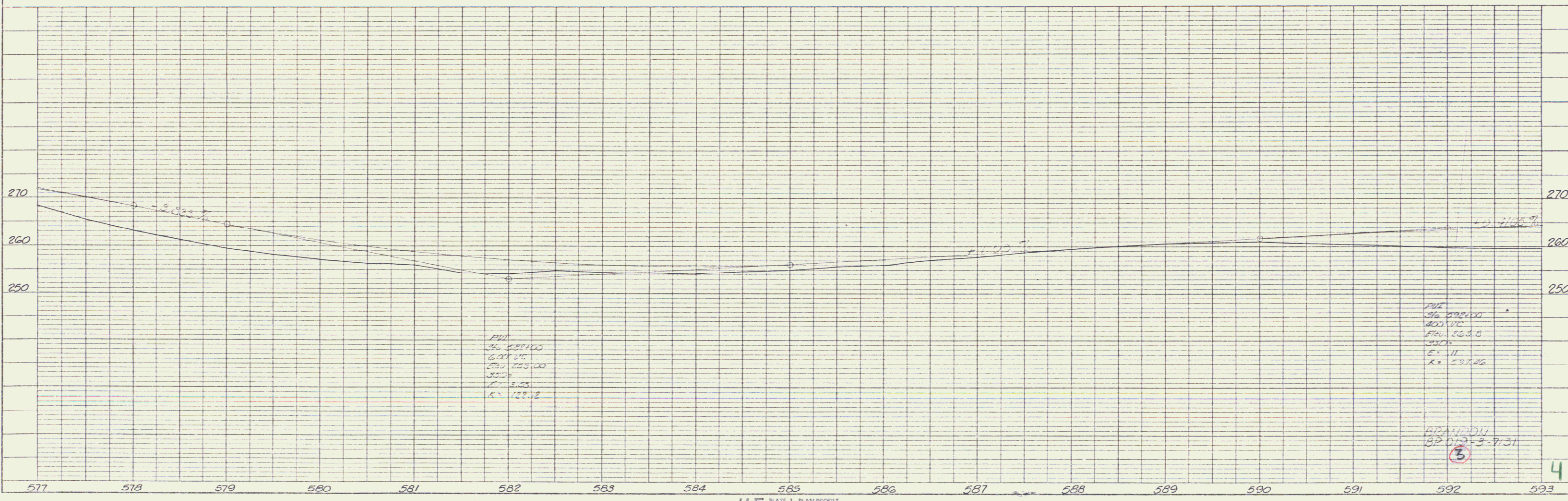
2

057

PLAN
 SUBMITTED BY
 DATE
 DRAWN BY
 CHECKED BY
 IN CHARGE
 NO. OF SHEETS
 NO. OF THIS SHEET



PROFILE
 SUBMITTED BY
 DATE
 DRAWN BY
 CHECKED BY
 IN CHARGE
 NO. OF SHEETS
 NO. OF THIS SHEET



PLAN	DATE
REVISIONS	
NO. 1	
NO. 2	
NO. 3	
NO. 4	
NO. 5	
NO. 6	
NO. 7	
NO. 8	
NO. 9	
NO. 10	

PROFILE	DATE
REVISIONS	
NO. 1	
NO. 2	
NO. 3	
NO. 4	
NO. 5	
NO. 6	
NO. 7	
NO. 8	
NO. 9	
NO. 10	

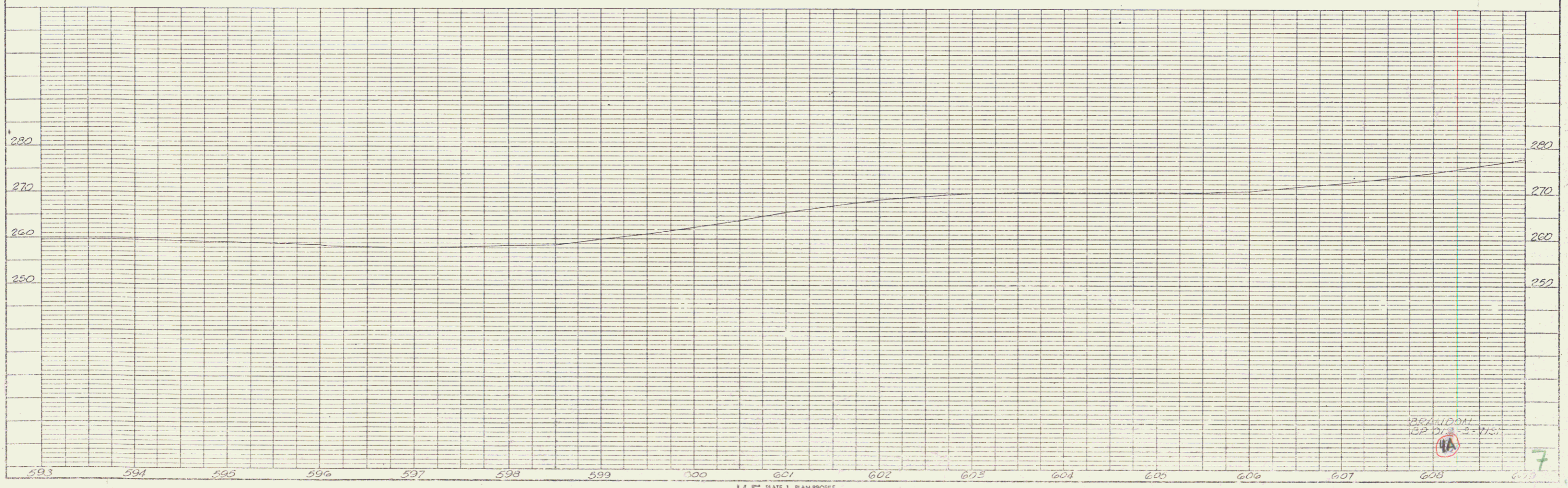
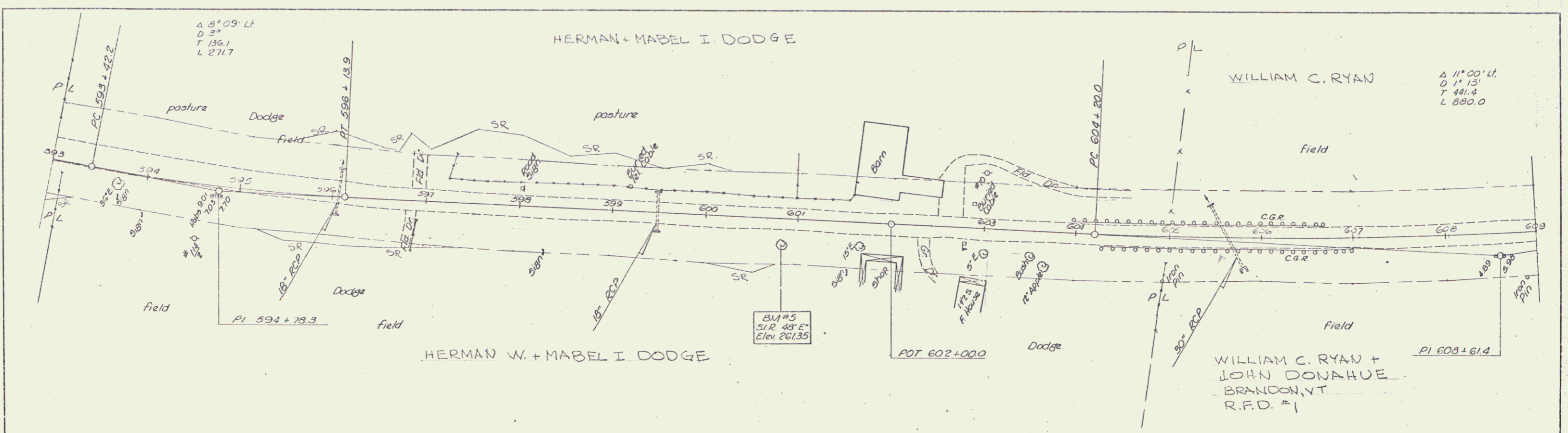


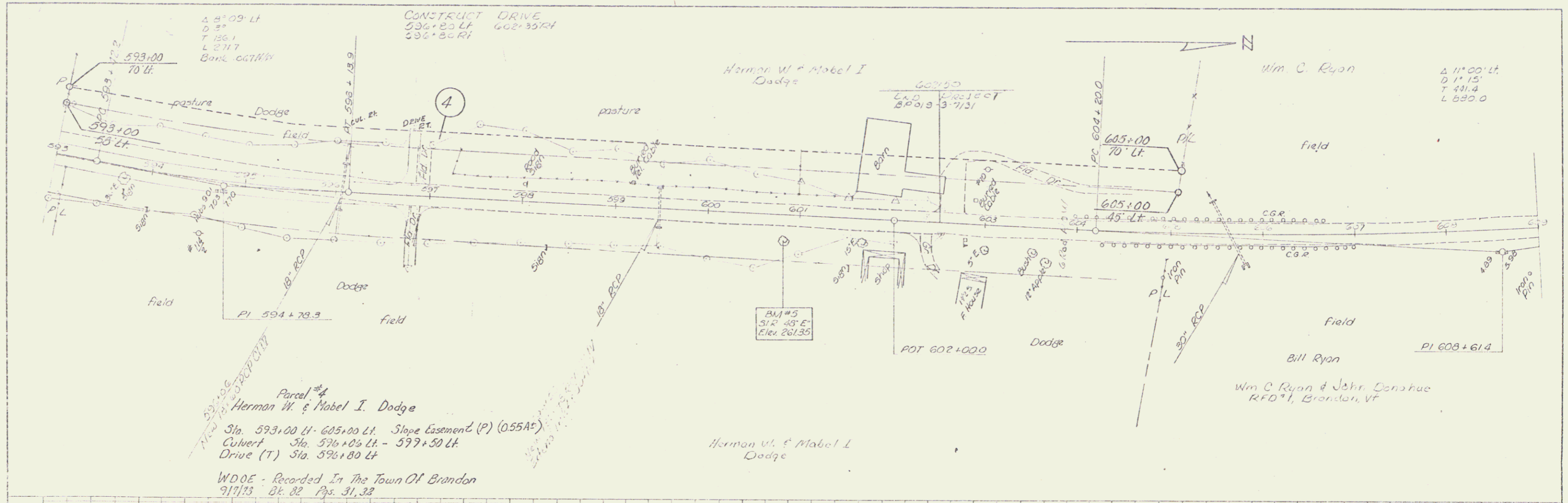
PLATE 1, PLAN-PROFILE
LAWRENCE & JONES CO.

BRANDON
SEP 21 1933

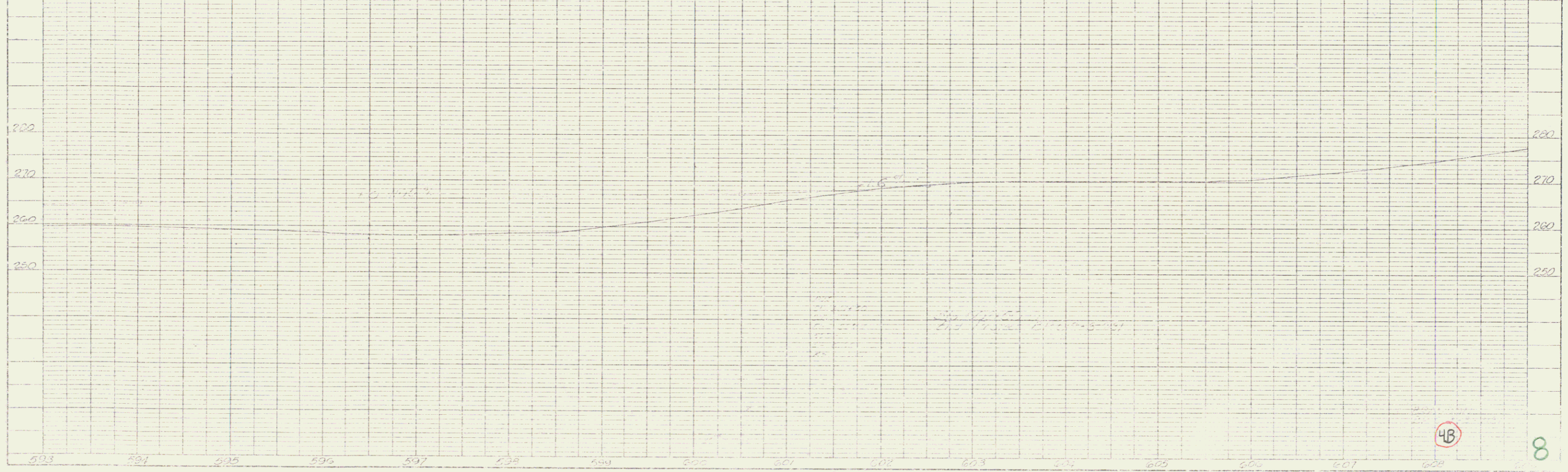
7

PLAN
 DRAWN BY: []
 CHECKED BY: []
 DATE: []

PROFILE
 DRAWN BY: []
 CHECKED BY: []
 DATE: []



Parcel #4
 Herman W. & Mabel I. Dodge
 Sta. 593+00 Lt. - 605+00 Lt. Slope Easement (P) (0.55A%)
 Culvert Sta. 596+00 Lt. - 597+50 Lt.
 Drive (T) Sta. 596+80 Lt.
 W.D.O.E. - Recorded In The Town Of Brandon
 9/7/13 Bk. 82 Pgs. 31, 32



PLATT 1 BLAUFORDVILLE
 1907 & 1908 CO.

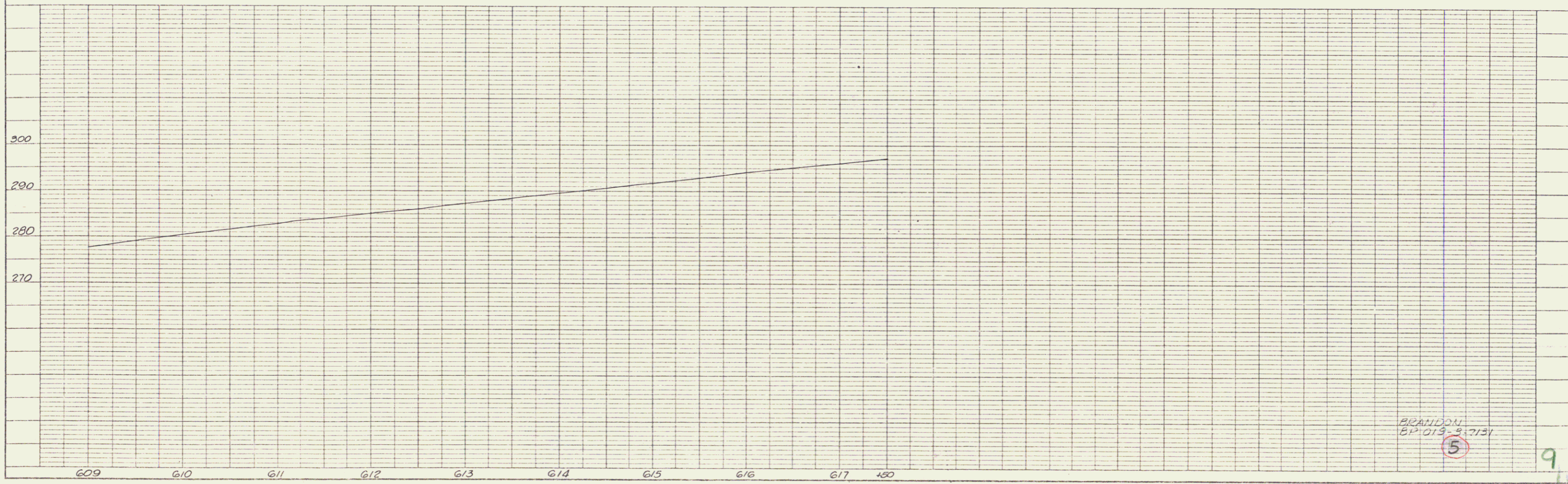
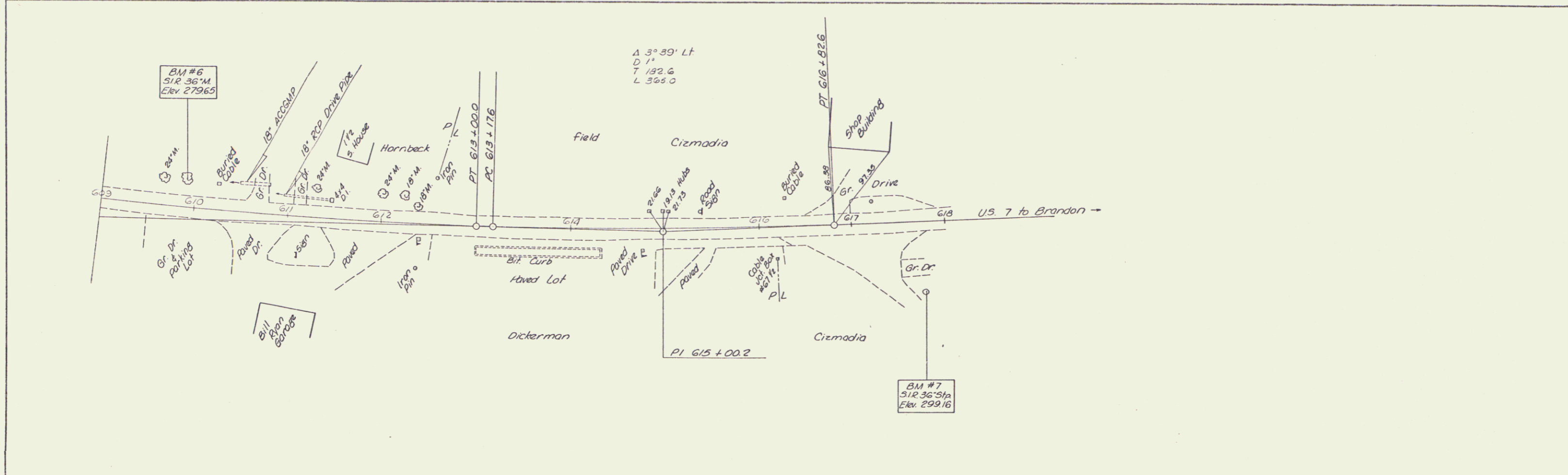
4B

8

US 7

DATE	
BY	
CHECKED	
DATE	
APPROVED	
DATE	
NO.	

DATE	
BY	
CHECKED	
DATE	
APPROVED	
DATE	
NO.	

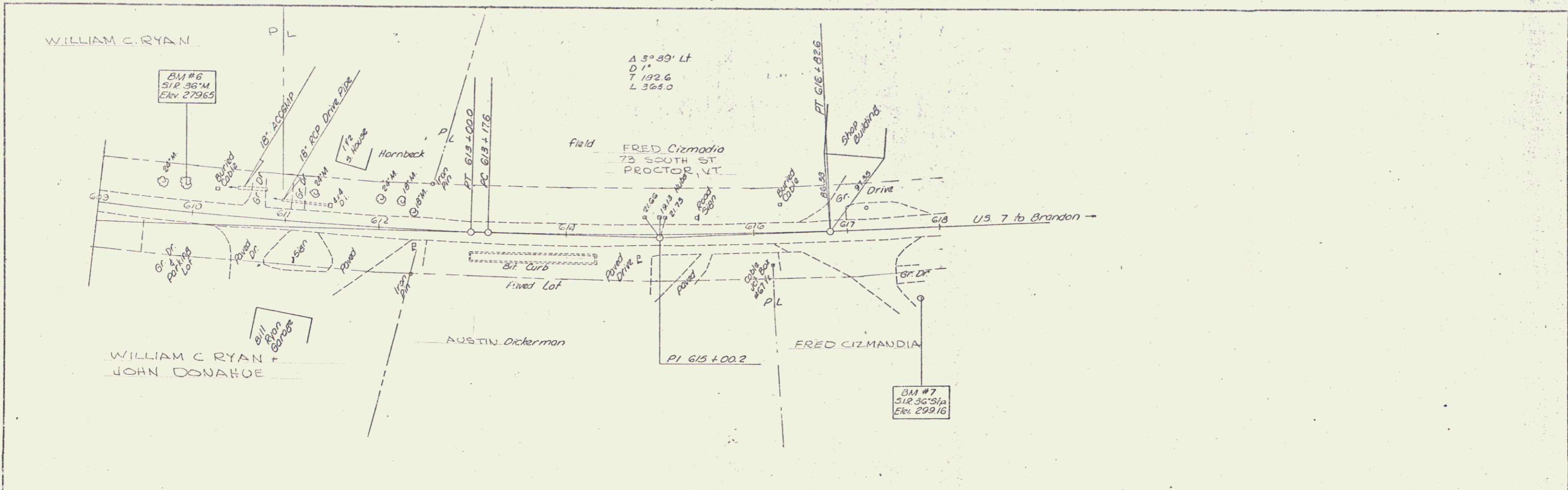


KE PLATE 1, PLAN-PROFILE
 487012 IMPERIAL™ TRANSPARENT 30" x 42"

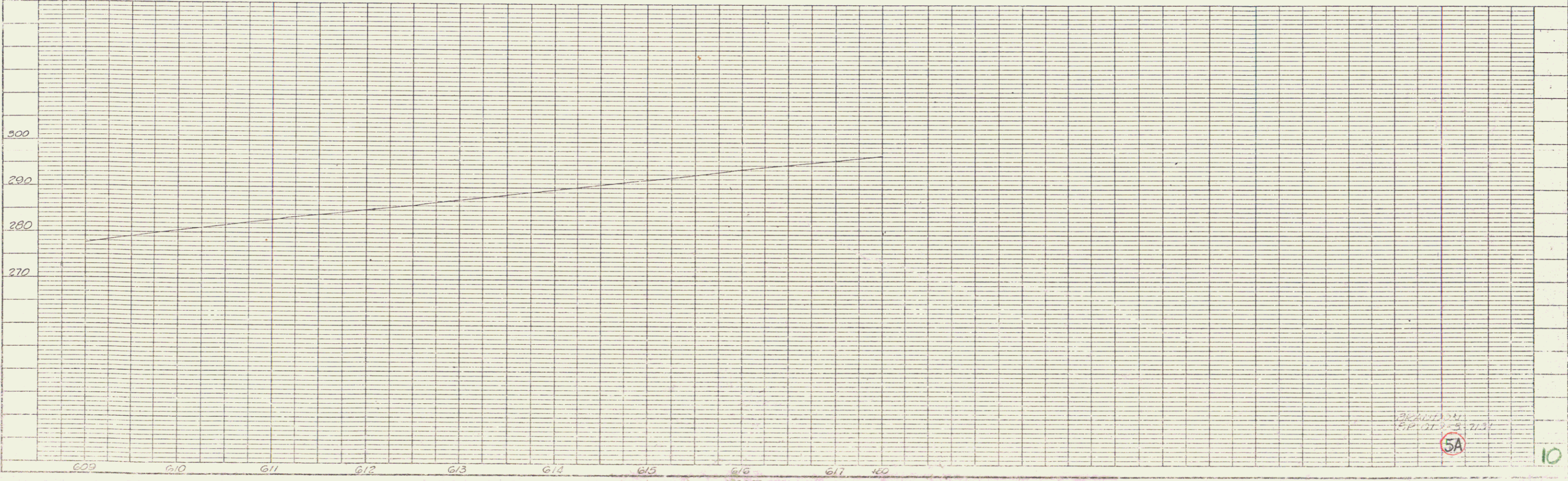
BRANDON
 6/1/03 5:13
 5

9

PLAN	DATE	BY
REVISION		
NO.		
DATE		
BY		
NO.		
DATE		
BY		
NO.		
DATE		
BY		



PROFILE	DATE	BY
REVISION		
NO.		
DATE		
BY		
NO.		
DATE		
BY		
NO.		
DATE		
BY		



5A

10