

WOOD GUARD RAIL REQUIRED

CULVERT STATION	LEFT	RIGHT
124+30	24'	24'
129+36	24'	24'
135+29	24'	24'

CABLE GUARD RAIL REQUIRED

STATIONS	LENS CONSTANT	PIV. LENGTH
123100-126120 LT.	349'	20'
126100-129100 LT.	100'	20'
129100-133100 RT.	100'	20'

NEW REIN. CONCRETE PIPE CULVERTS REQUIRED

STATION	DIAM.	LENS	CONC. A	CONC. B	REIN. STEEL
125+30	18"	40'	~	3 1/2"	33 lbs.
129+36	15"	40'	~	2 3/4"	33 lbs.
135+29	15"	40'	~	2 3/4"	33 lbs.

STANDARD UNDERDRAIN REQUIRED

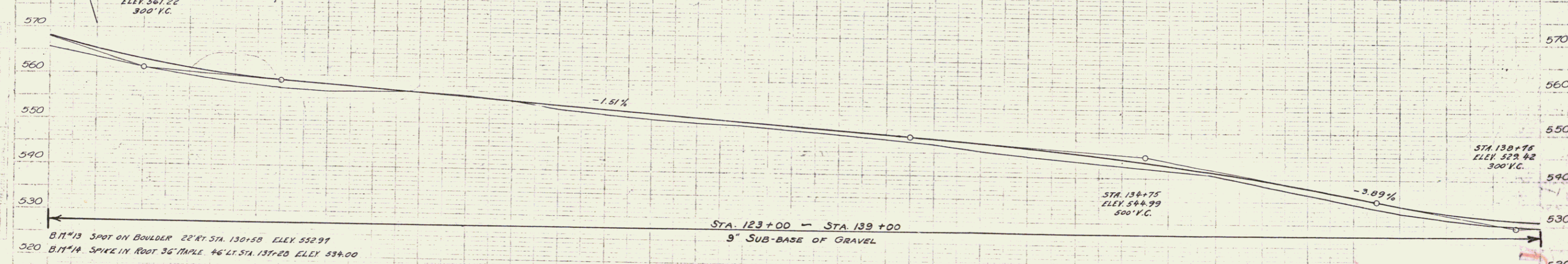
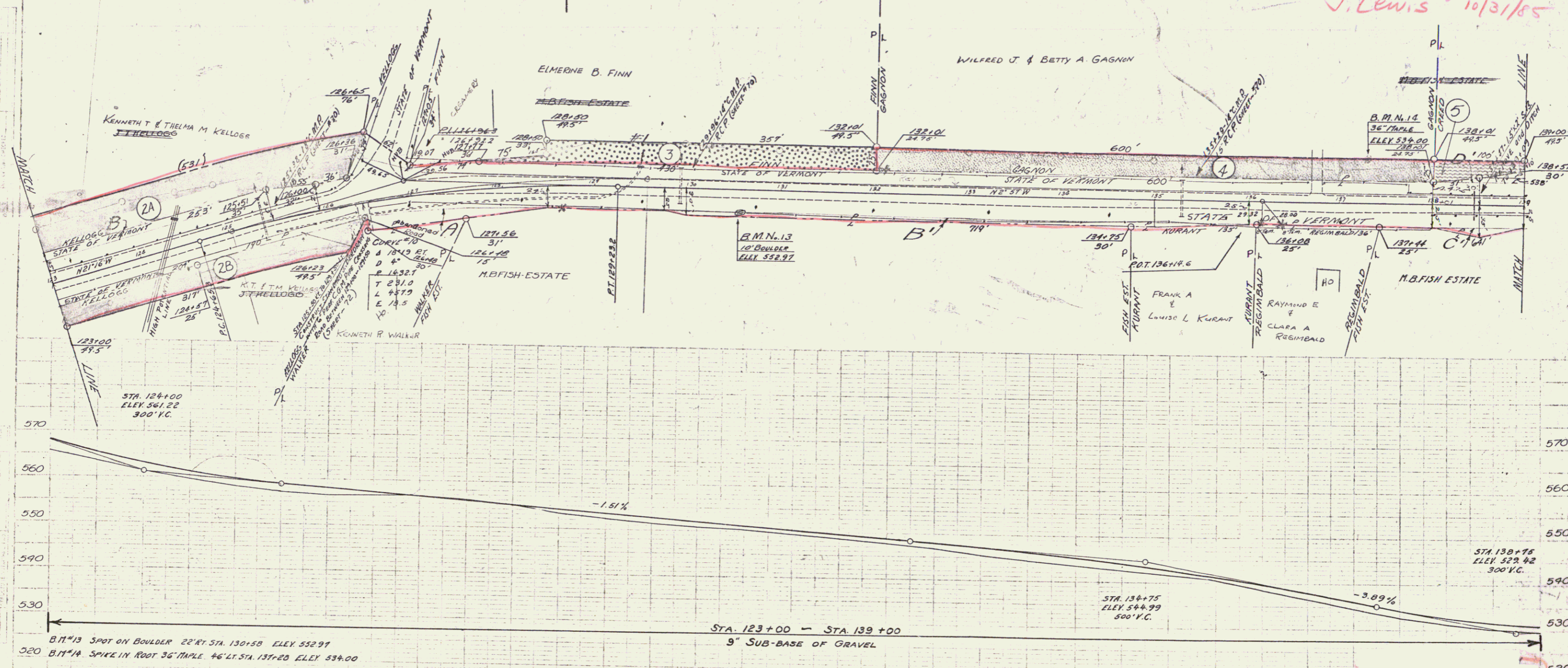
(6" PAV. C.P.M. PIPE)

STATIONS	LENS	CEMENT RUBBLE MASONRY
125+50 RT. - 129+50 LT.	410'	10 cubic yards

STATE OF VERMONT
109 A 1931 192

Parcel	Kind of Instrument	Date of Instrument	Grantor	Grantee	Recorded Book Page	Date	Remarks
B	G.C.D.	4-30-31	J.T. Kellogg	Staf. Vt. 8	130	6-3-31	
A, B, C, D, Chm. #1		12-30-31	W.K. Fish et al	"	8	2-5	Drawn Sta. 129+50

right-of-way
See Town file for more information
J. Lewis 10/31/85



Station	Elevation	Station	Elevation	Station	Elevation	Station	Elevation	Station	Elevation
123+00	565.0	124+00	561.22	125+00	557.2	126+00	556.6	127+00	555.8
123+30	563.6	124+30	559.7	125+30	555.1	126+30	554.6	127+30	553.9
123+60	562.1	124+60	558.2	125+60	553.7	126+60	553.2	127+60	552.5
123+90	560.6	124+90	556.7	125+90	552.2	126+90	551.7	127+90	551.0
124+20	559.1	124+50	555.2	125+20	551.7	126+20	551.2	127+20	550.5
124+50	557.6	124+80	553.7	125+50	550.2	126+50	549.7	127+50	549.0
124+80	556.1	125+10	552.2	125+80	548.7	126+80	548.2	127+80	547.5
125+10	554.6	125+40	550.7	126+10	547.2	127+10	546.7	128+10	546.0
125+40	553.1	125+70	549.2	126+40	545.7	127+40	545.2	128+40	544.5
125+70	551.6	126+00	547.7	127+00	544.2	128+00	543.7	129+00	543.0
126+00	550.1	126+30	546.2	127+30	542.7	128+30	542.2	129+30	541.5
126+30	548.6	126+60	544.7	127+60	541.2	128+60	540.7	129+60	540.0
126+60	547.1	126+90	543.2	127+90	539.7	128+90	539.2	129+90	538.5
126+90	545.6	127+20	541.7	128+20	538.2	129+20	537.7	130+20	537.0
127+20	544.1	127+50	540.2	128+50	536.7	129+50	536.2	130+50	535.5
127+50	542.6	127+80	538.7	128+80	535.2	129+80	534.7	130+80	534.0
127+80	541.1	128+10	537.2	129+10	533.7	130+10	533.2	131+10	532.5
128+10	539.6	128+40	535.7	129+40	532.2	130+40	531.7	131+40	531.0
128+40	538.1	128+70	534.2	129+70	531.7	130+70	531.2	131+70	530.5
128+70	536.6	129+00	532.7	130+00	530.2	131+00	529.7	132+00	529.0
129+00	535.1	129+30	531.2	130+30	528.7	131+30	528.2	132+30	527.5
129+30	533.6	129+60	529.7	130+60	527.2	131+60	526.7	132+60	526.0
129+60	532.1	129+90	528.2	130+90	525.7	131+90	525.2	132+90	524.5
129+90	530.6	130+20	526.7	131+20	524.2	132+20	523.7	133+20	523.0
130+20	529.1	130+50	525.2	131+50	523.7	132+50	523.2	133+50	522.5
130+50	527.6	130+80	523.7	131+80	522.2	132+80	521.7	133+80	521.0
130+80	526.1	131+10	522.2	132+10	520.7	133+10	520.2	134+10	519.5
131+10	524.6	131+40	520.7	132+40	519.2	133+40	518.7	134+40	518.0
131+40	523.1	131+70	519.2	132+70	517.7	133+70	517.2	134+70	516.5
131+70	521.6	132+00	517.7	133+00	516.2	134+00	515.7	135+00	515.0
132+00	520.1	132+30	516.2	133+30	514.7	134+30	514.2	135+30	513.5
132+30	518.6	132+60	514.7	133+60	513.2	134+60	512.7	135+60	512.0
132+60	517.1	132+90	513.2	133+90	511.7	134+90	511.2	135+90	510.5
132+90	515.6	133+20	511.7	134+20	510.2	135+20	509.7	136+20	509.0
133+20	514.1	133+50	510.2	134+50	508.7	135+50	508.2	136+50	507.5
133+50	512.6	133+80	508.7	134+80	507.2	135+80	506.7	136+80	506.0
133+80	511.1	134+10	507.2	135+10	505.7	136+10	505.2	137+10	504.5
134+10	509.6	134+40	505.7	135+40	504.2	136+40	503.7	137+40	503.0
134+40	508.1	134+70	504.2	135+70	502.7	136+70	502.2	137+70	501.5
134+70	506.6	135+00	502.7	136+00	501.2	137+00	500.7	138+00	500.0
135+00	505.1	135+30	501.2	136+30	499.7	137+30	499.2	138+30	498.5
135+30	503.6	135+60	499.7	136+60	498.2	137+60	497.7	138+60	497.0
135+60	502.1	135+90	498.2	136+90	496.7	137+90	496.2	138+90	495.5
135+90	500.6	136+20	496.7	137+20	495.2	138+20	494.7	139+20	494.0
136+20	499.1	136+50	495.2	137+50	493.7	138+50	493.2	139+50	492.5
136+50	497.6	136+80	493.7	137+80	492.2	138+80	491.7	139+80	491.0
136+80	496.1	137+10	492.2	138+10	490.7	139+10	490.2	140+10	489.5
137+10	494.6	137+40	490.7	138+40	489.2	139+40	488.7	140+40	488.0
137+40	493.1	137+70	489.2	138+70	487.7	139+70	487.2	140+70	486.5
137+70	491.6	138+00	487.7	139+00	486.2	140+00	485.7	141+00	485.0
138+00	490.1	138+30	486.2	139+30	484.7	140+30	484.2	141+30	483.5
138+30	488.6	138+60	484.7	139+60	483.2	140+60	482.7	141+60	482.0
138+60	487.1	138+90	483.2	140+90	481.7	141+90	481.2	142+90	480.5
138+90	485.6	139+20	481.7	141+20	480.2	142+20	479.7	143+20	479.0
139+20	484.1	139+50	480.2	141+50	478.7	142+50	478.2	143+50	477.5
139+50	482.6	139+80	478.7	142+80	477.2	143+80	476.7	144+80	476.0
139+80	481.1	140+10	477.2	143+10	475.7	144+10	475.2	145+10	474.5
140+10	479.6	140+40	475.7	143+40	474.2	144+40	473.7	145+40	473.0
140+40	478.1	140+70	474.2	143+70	472.7	144+70	472.2	145+70	471.5
140+70	476.6	141+00	472.7	144+00	471.2	145+00	470.7	146+00	470.0
141+00	475.1	141+30	471.2	144+30	469.7	145+30	469.2	146+30	468.5
141+30	473.6	141+60	469.7	144+60	468.2	145+60	467.7	146+60	467.0
141+60	472.1	141+90	468.2	144+90	466.7	145+90	466.2	146+90	465.5
141+90	470.6	142+20	466.7	145+20	465.2	146+20	464.7	147+20	464.0
142+20	469.1	142+50	465.2	145+50	463.7	146+50	463.2	147+50	462.5
142+50	467.6	142+80	463.7	145+80	462.2	146+80	461.7	147+80	461.0
142+80	466.1	143+10	462.2	145+10	460.7	146+10	460.2	147+10	459.5
143+10	464.6	143+40	460.7	145+40	459.2	146+40	458.7	147+40	458.0
143+40	463.1	143+70	459.2	145+70	457.7	146+70	457.2	147+70	456.5
143+70	461.6	144+00	457.7	145+00	456.2	146+00	455.7	147+00	455.0
144+00	460.1	144+30	456.2	145+30	454.7	146+30	454.2	147+30	453.5
144+30	458.6	144+60	454.7	145+60	453.2	146+60	452.7	147+60	452.0
144+60	457.1	144+90	453.2	145+90	451.7	146+90	451.2	147+90	450.5
144+90	455.6	145+20	451.7	146+20	450.2	147+20	449.7	148+20	449.0
145+20	454.1	145+50	450.2	146+50	448.7	147+50	448.2	148+50	447.5
145+50	452.6	145+80	448.7	146+80	447.2	147+80	446.7	148+80	446.0
145+80	451.1	146+10	447.2	146+10	445.7	147+10	445.2	148+10	444.5
146+10	449.6	146+40	445.7	146+40	444.2	147+40	443.7	148+40	443.0
146+40	448.1	146+70	444.2	146+70	442.7	147+70	442.2	148+70	441.5
146+70	446.6	147+00	442.7	146+00	441.2	147+00	440.7	148+00	440.0
147+00	445.1	147+30	441.2	146+30	439.7	147+30	439.2	148+30	438.5
147+30	443.6	147+60	439.7	146+60	438.2	147+60	437.7	148+60	437.0
147+60	442.1	147+90	438.2	146+90	436.7	147+90	436.2	148+90	435.5
147+90	440.6	148+20	436.7	147+20	435.2	148+20	434.7	149+20	434.0
148+20	439.1	148+50	435.2	147+50	433.7	148+50	433.2	149+50	432.5
148+50	437.6	148+80	433.7	147+80	432.2	148+80	431.7	149+80	431.0
148+80	436.1	149+10	432.2	147+10	430.7	148+10	430.2	149+10	429.5
149+10	434.6	149+40	430.7	147+40	429.2	148+40	428.7	149+40	428.0
149+40	433.1	149+70	429.2	147+70	427.7	148+70	427.2	149+70	426.5
149+70	431.6	150+00	427.7	147+00	426.2	148+00	425.7	149+00	425.0
150+00	430.1	150+30	426.2	147+30	424.7	148+30	424.2	149+30	423.5
150+30	428.6	150+60	424.7	147+60	423.2	148+60	422.7	149+60	422.0
150+60	427.1	150+90	423.2	147+90	421.7	148+90	421.2	149+90	420.5
150+90	425.6	151+20	421.7	148+20	420.2	149+20	419.7	150+20	419.0
151+20	424.1	151+50	420.2	148+50	418.7	149+50	418.2	150+50	