

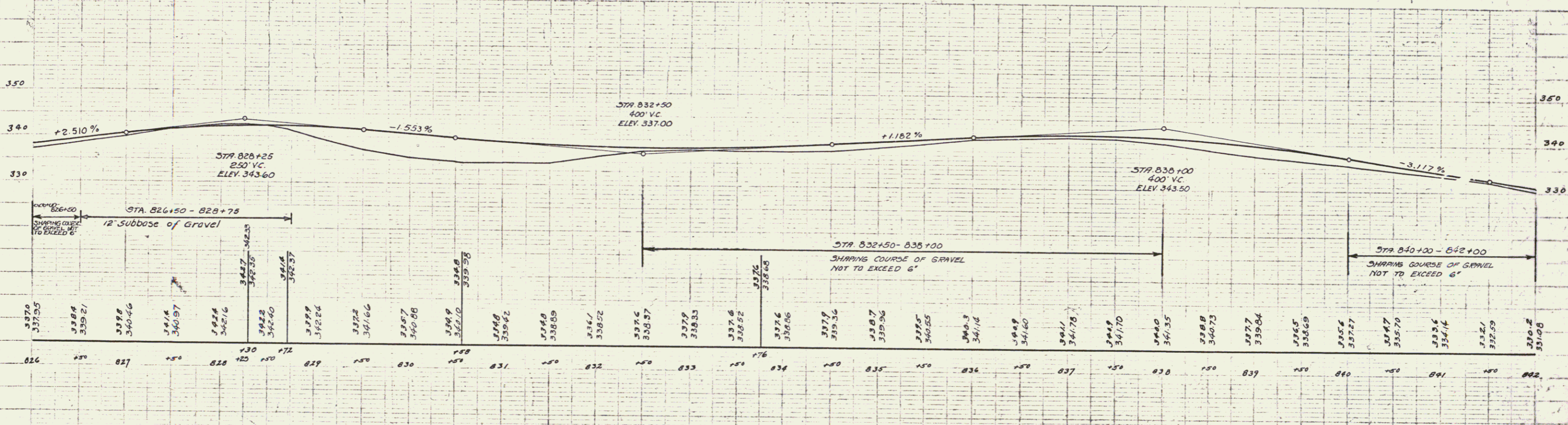
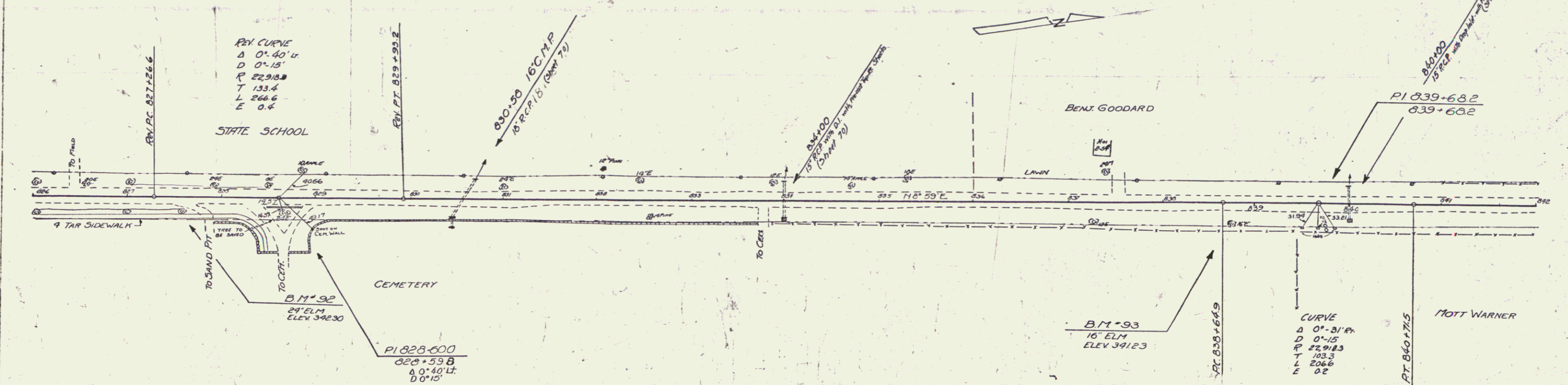
WOOD GUARD RAIL REQUIRED

CULVERT STATION	LEFT RIGHT
830+50	24' 24'
834+00	24' 24'
840+00	24' 24'

NEW REINFORCED CONCRETE PIPE CULVERTS REQUIRED

STATION	DIAM. (IN)	CONC. A	CONC. B	REIN. STEEL
830+30	18" 48"	3.0 cy	3.3 lbs	
834+00	15" 40"	2.2 cy	1.2 cy	222 lbs
840+00	15" 36"	2.2 cy	1.2 cy	222 lbs

EST. NO.	STATE	FED. AID	TOTAL PROJECT	DATE
9	VT	109-A	73311 59	192



BM 92 SPIKE IN FOOT 29' ELM 15' IN 827+58 ELEV. 342.30
 BM 93 16' ELM 21' IN 838+73 ELEV. 341.23

SERIES No. 109A
 SHEET 09 OF 192

61