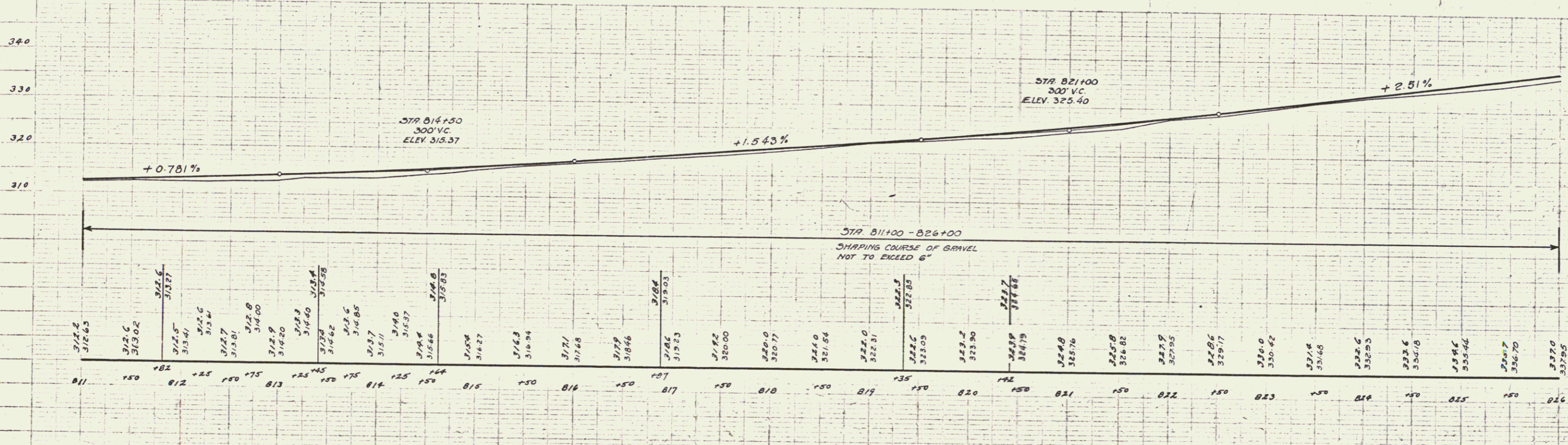
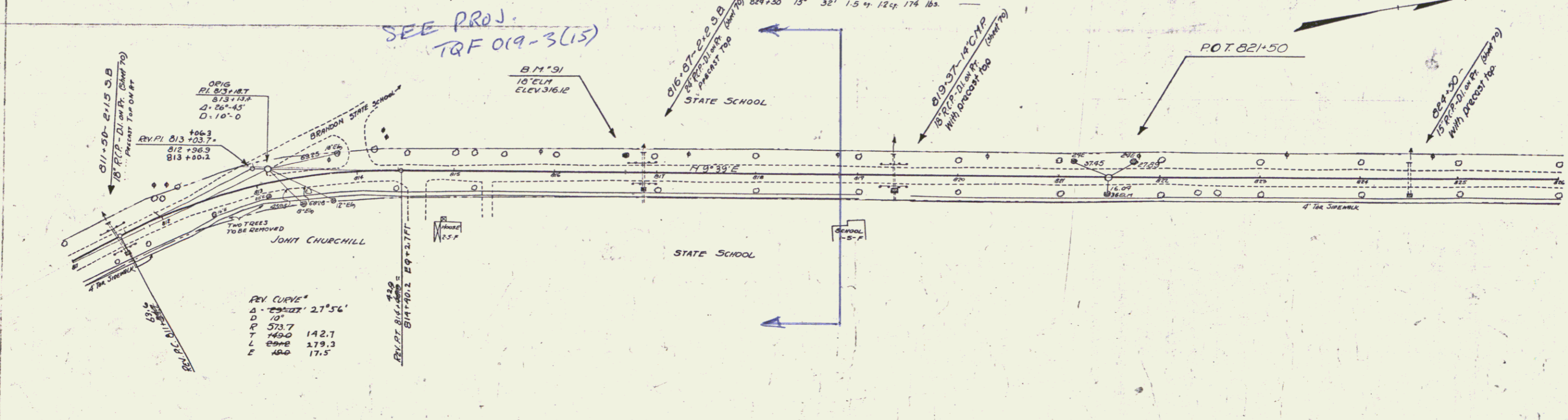


WOOD GUARD RAIL REQUIRED		
CULVERT STATION	LEFT	RIGHT
811+50	24'	-
816+87	24'	-
819+37	24'	-
824+50	24'	-

WOOD GUIDE POSTS REQUIRED			
STATION	LEFT	RIGHT	
811+50	-	1	
816+87	-	1	
819+37	-	1	
824+50	-	1	

NEW REINF CONCRETE PIPE CULVERTS REQUIRED					
STATION	DIAM.	LENG.	CONC. B.	CONC. C.	REINF. STEEL
811+50	18"	36'	1.5"	1.5"	174 lbs.
816+87	24"	36'	2.2"	2.3"	207 lbs.
819+37	18"	36'	2.2"	1.5"	222 lbs.
824+50	15"	32'	1.5"	1.2"	174 lbs.

FED. ROAD DIST. NO.	STATE	FED. AID PROJ. NO.	FISCAL YEAR	SHEET NO.	TOTAL SHEETS
9	VT.	109-A	1931	39	192



H.G. GORRILL
 H.B. BROWN
 L. BROWN
 L. BROWN

B.M. 91 SPIKE IN ROOT 18" ELM-192+816+71 ELEV. 316.12

60