

WOOD GUIDED RAIL REQUIRED

CULVERT STATION	LEFT	RIGHT
799+50	24'	-
806+00	24'	-
808+05	24'	-

WOOD GUIDE POSTS REQUIRED

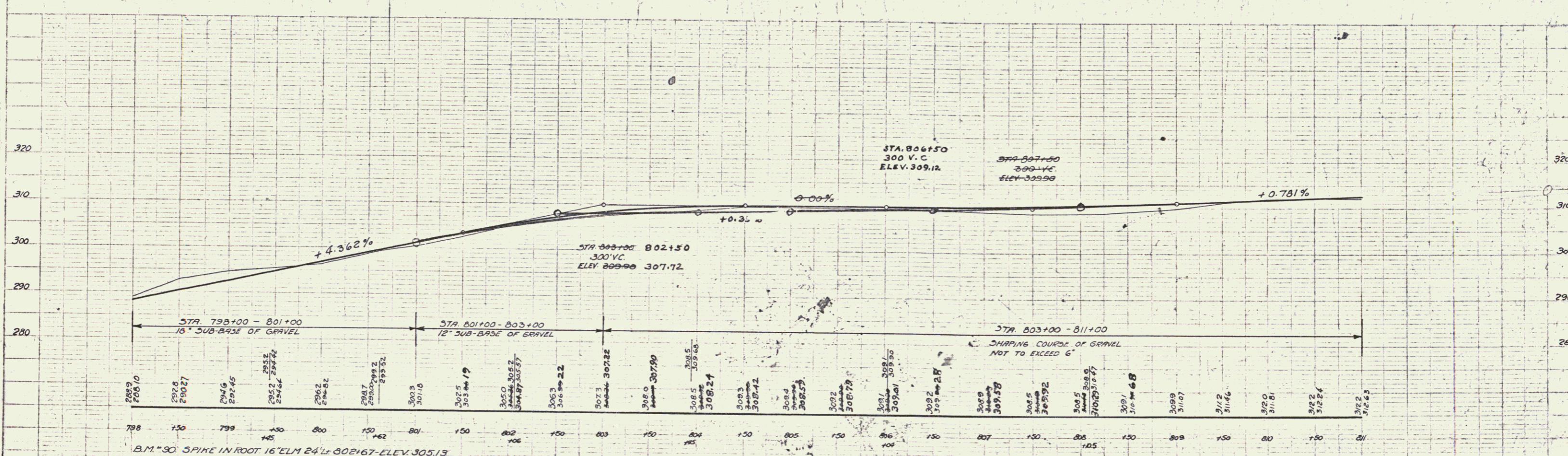
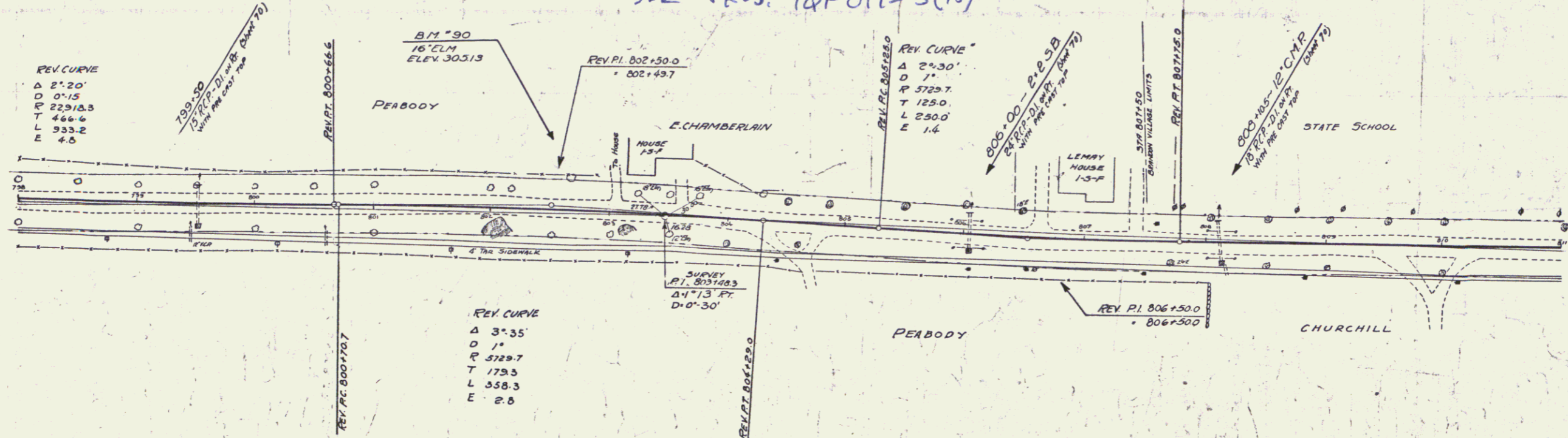
STATION	LEFT	RIGHT
799+50	-	1
806+00	-	1
808+05	-	1

NEW REIN. CONCRETE PIPE CULVERTS REQUIRED

STATION	DIAM.	LENG.	CONC. A	CONC. C	REIN. STEEL
799+50	15"	36'	2.4 cy	1.2 cy	240 lbs
806+00	24"	32'	3.8 cy	-	240 lbs
808+05	10"	36'	2.2 cy	1.5 cy	222 lbs

PROJ. NO.	STATE	DIST. NO.	YEAR	SHEET NO.	TOTAL SHEETS
109-A	VT.	109-A	1931	57	192

SEE PROJ. T&E 019-3(15)



PLAN  
1/16" = 1' HORIZ.  
1/8" = 1' VERT.

PROFILES  
1/8" = 1' VERT.

SERIES No. 109-A  
SHEET 57 OF 192

51