

WOOD GUARD RAIL REQUIRED

CULVERT STATION	LEFT	RIGHT
730+00	-	26'

CONCRETE CRICH BASINS REQUIRED

STATION	Loc R	LUMP SUM
729+93	LT	1

NEW REINF CONCRETE PIPE CULVERTS REQUIRED

STATION	DIAM	LENG	CONC. A	CONC. B	REINF STEEL
730+00	24"	40'	1/3	4"	27 lbs.
729+93	24"	160'			NON. GOVT. PART.

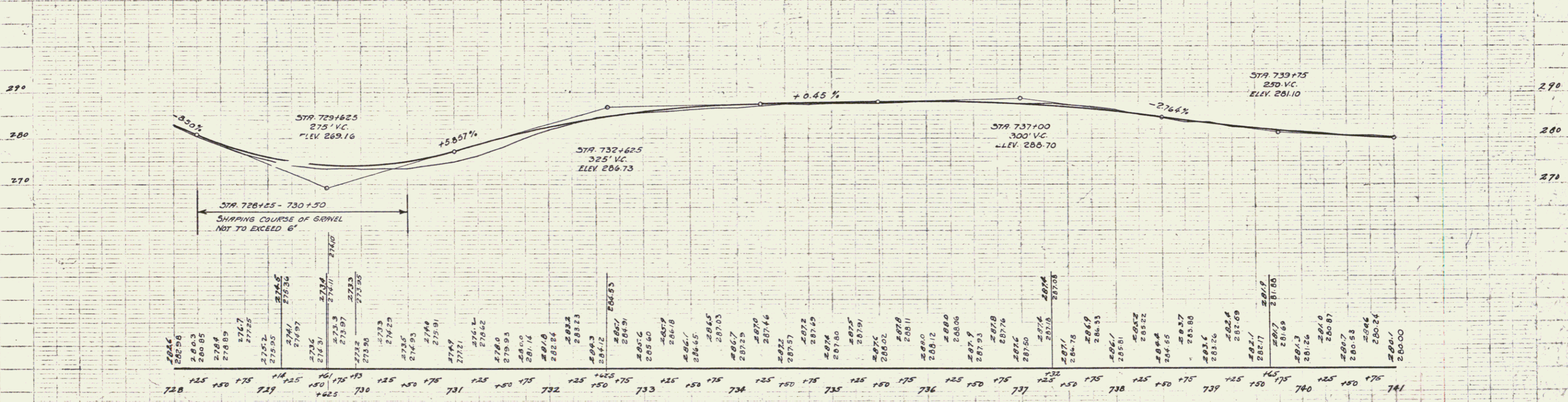
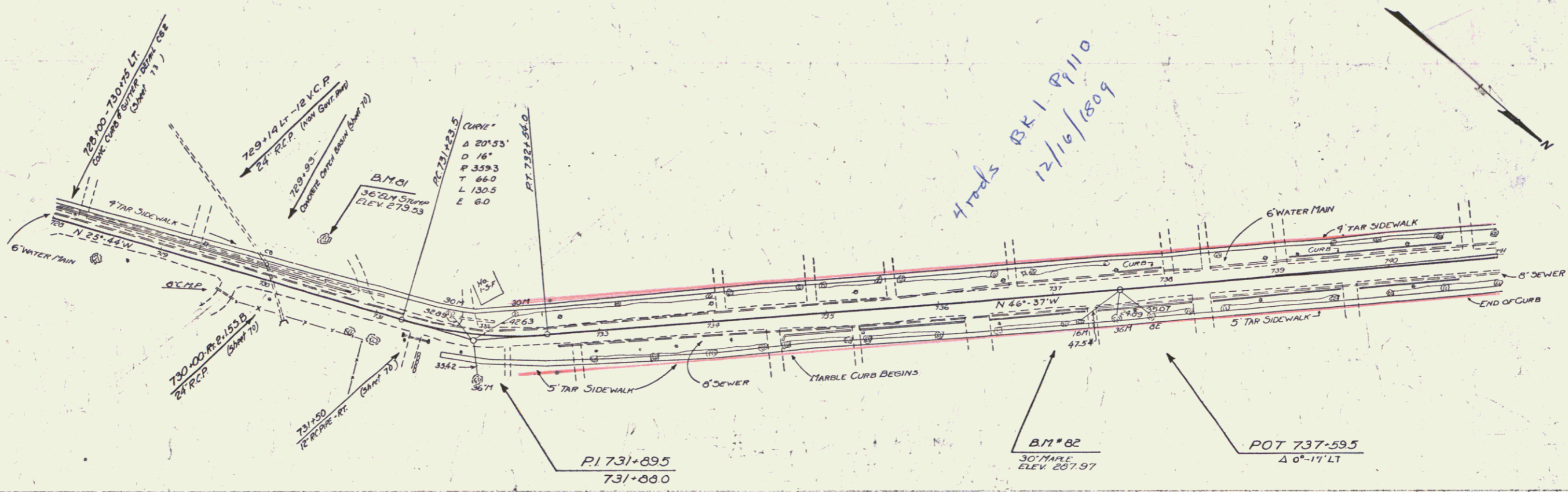
DRIVEWAY PIPE CULVERTS REQUIRED

STATION	Loc R	DIAM	LENG	CEMENT	PUBLE	MASONRY
731+50	Rt.	12"	24'	2.3	cy	

CONCRETE CURB AND GUTTER REQUIRED

STATIONS	Loc R	WIDTH	CURB HGT	CONC. A	REINF STEEL
728+00-730+75	LT	2'-0"	6"	175	206 lbs.

FED. ROAD STATE FED. AID FISCAL YEAR
 DIST. NO. 109-A 1931 51 192



B.M. #81 SPIKE IN TOP 36" ELM STUMP 47'x 7301.38 ELEV 279.53
 B.M. #82 " " " " 30" MAPLE 24'x 737+00 ELEV 267.97

SERIES No 109-A
 SHEET 02 OF 132

54