

**WOOD GUARD RAIL REQUIRED**

CULVERT STATION	LEFT	RIGHT
701+34	24'	24'

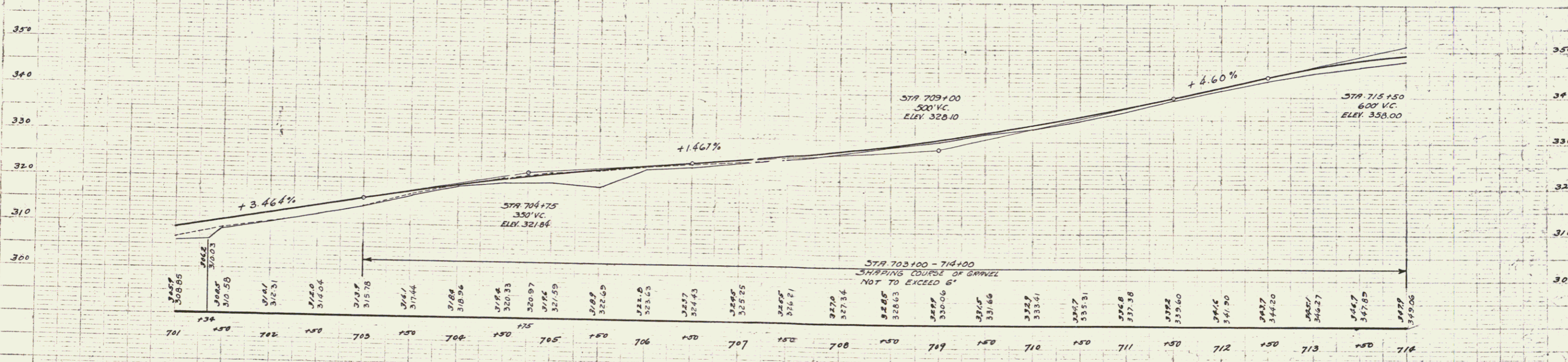
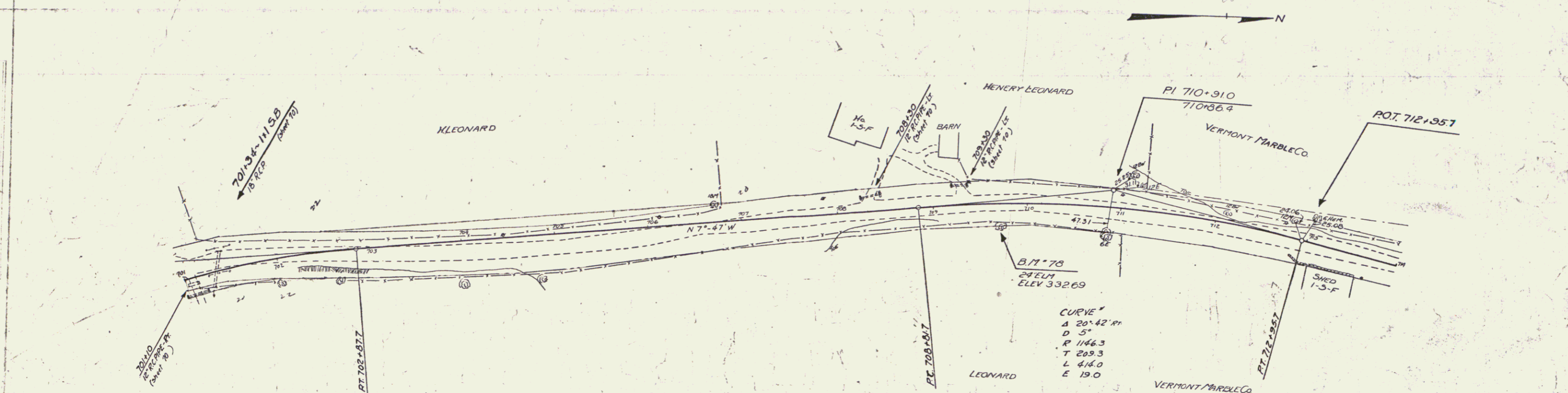
**NEW REIN. CONCRETE PIPE CULVERTS REQUIRED**

STATION	DIAM.	LENS	CONCR.	CONC. C.	REIN. STEEL
701+34	18"	40'	3.0 cy	33 lbs.	

**DRIVEWAY PIPE CULVERTS REQUIRED**

STATION	LEN	DIAM.	LENS	CONCR.	REIN. STEEL
701+10	18"	24'	3.3 cy		
708+30	12"	24'	2.3 cy		
709+30	12"	24'	2.3 cy		

FED. ROAD DIST. NO.	STATE	FISCAL YEAR	PROJECT NO.	SHEET NO.
5	VT.	1937	109-A	50



B.M. 78 SPIKE IN ROOT 29' ELM 20' R. 709+70 ELEV. 332.69

SERIES F-109-A  
SHEET 50 OF 192

52