

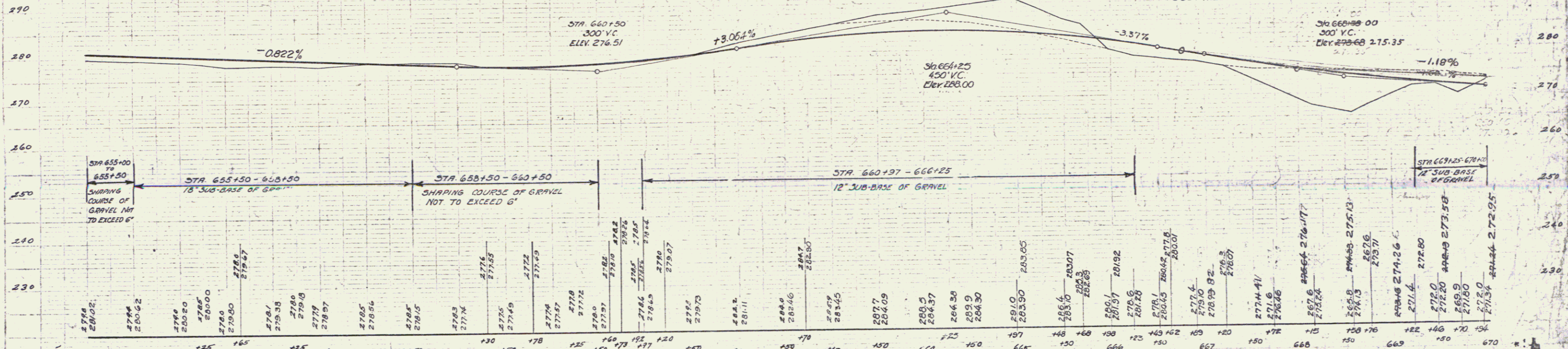
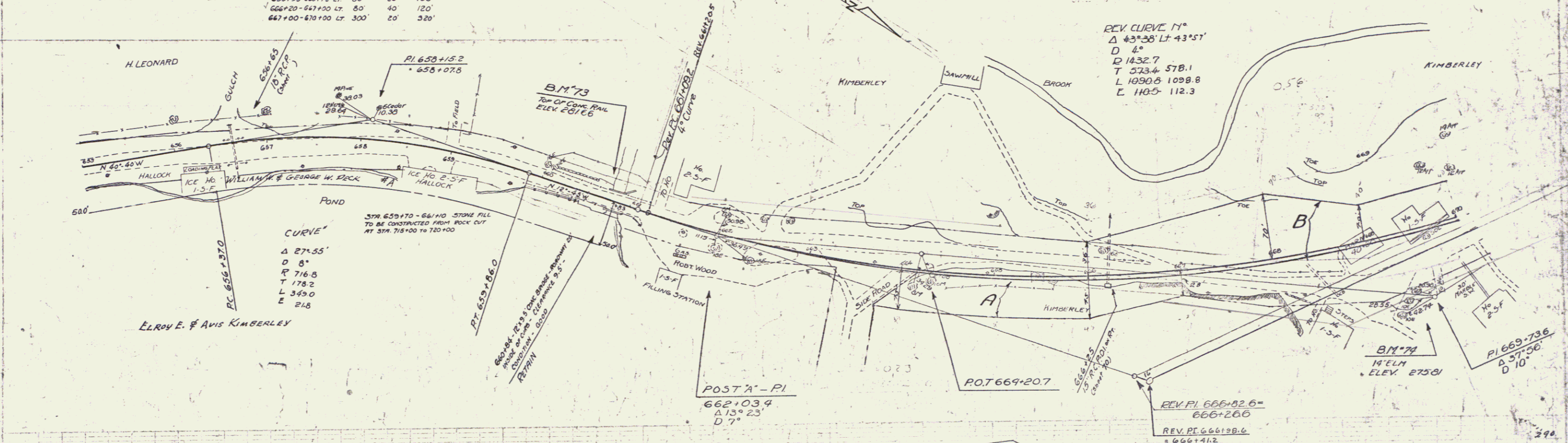
WOOD GUARD RAIL REQUIRED		
CULVERT STATION	LEFT	RIGHT
656+65	24'	-
660+92-66+116	24'	24'
664+25	-	24'

CABLE GUARD RAIL REQUIRED			
STATIONS	LENS	CONSTANT	PIV. LENGTH
655+00-655+60	PT. 60'	20'	60'
659+45-660+75	PT. 125'	20'	145'
659+93-660+75	LT. 80'	20'	100'
666+20-667+00	LT. 80'	40'	120'
667+00-670+00	LT. 300'	20'	320'

NEW REINF. CONCRETE PIPE CULVERTS REQUIRED				
STATION	DIAM.	LENS	CONC. A	CONC. B
656+65	18"	48'	-	1.5 cu. 17 lbs.
666+25	15"	60'	1-7.9'	170 lbs.

Parcel	Kind of Instrument	Date of Instrument	Grantor	Grantee	Recorded	Remarks
A.43.	G.C.D.	4-29-31	Et Kimberly	St. of Va.	64 3/4	EASEMENT
Q.C.D.		4-16-53	W.H. FOR W. PAUL	St. of Va.	72 2/2	See Sheet 4

REVISION MARCH 4, 1931
 Line changed Sta. 660+00-675+00
 with 4° Curve instead of 7° L. 10° L. 93° ET.
 giving a +24.7 Equation of Survey Sta. 675+25
 instead of a +33.4 Equation.
 This cuts PAVEMENT QUANTITIES 49 cu. yds.
 Cut at 666+25 length increased from 56.76 60 ft.



BM 73 TOP OF CONCRETE RAIL 10' L. 660+75 ELEV. 281.66
 BM 74 SPIKE IN ROOT WELM 21' L. 669+90 ELEV. 275.81

REVISION MARCH 4, 1931
 Line changed Sta. 660+00-675+00
 with 4° Curve instead of 7° L. 10° L. 93° ET.
 giving a +24.7 Equation of Survey Sta. 675+25
 instead of a +33.4 Equation.
 This cuts PAVEMENT QUANTITIES 49 cu. yds.
 Cut at 666+25 length increased from 56.76 60 ft.