

WOOD GUARD RAIL REQUIRED

CULVERT STATION	LEFT	RIGHT
640+73	24'	-
652+55	24'	-

CABLE GUARD RAIL REQUIRED

STATIONS	LENS	COUNTY	ANY LENGTH
64160-655+00	740'	60'	800'

NEW POINT CONCRETE PIPE CULVERTS REQUIRED

STATION	DIAM.	LENG.	CONC. P.	CONC. C.	POINT STEEL
640+73	24"	40'	2.8 cy.	-	138 lbs.
652+55	18"	40'	1.9 cy.	1.8 cy.	207 lbs.

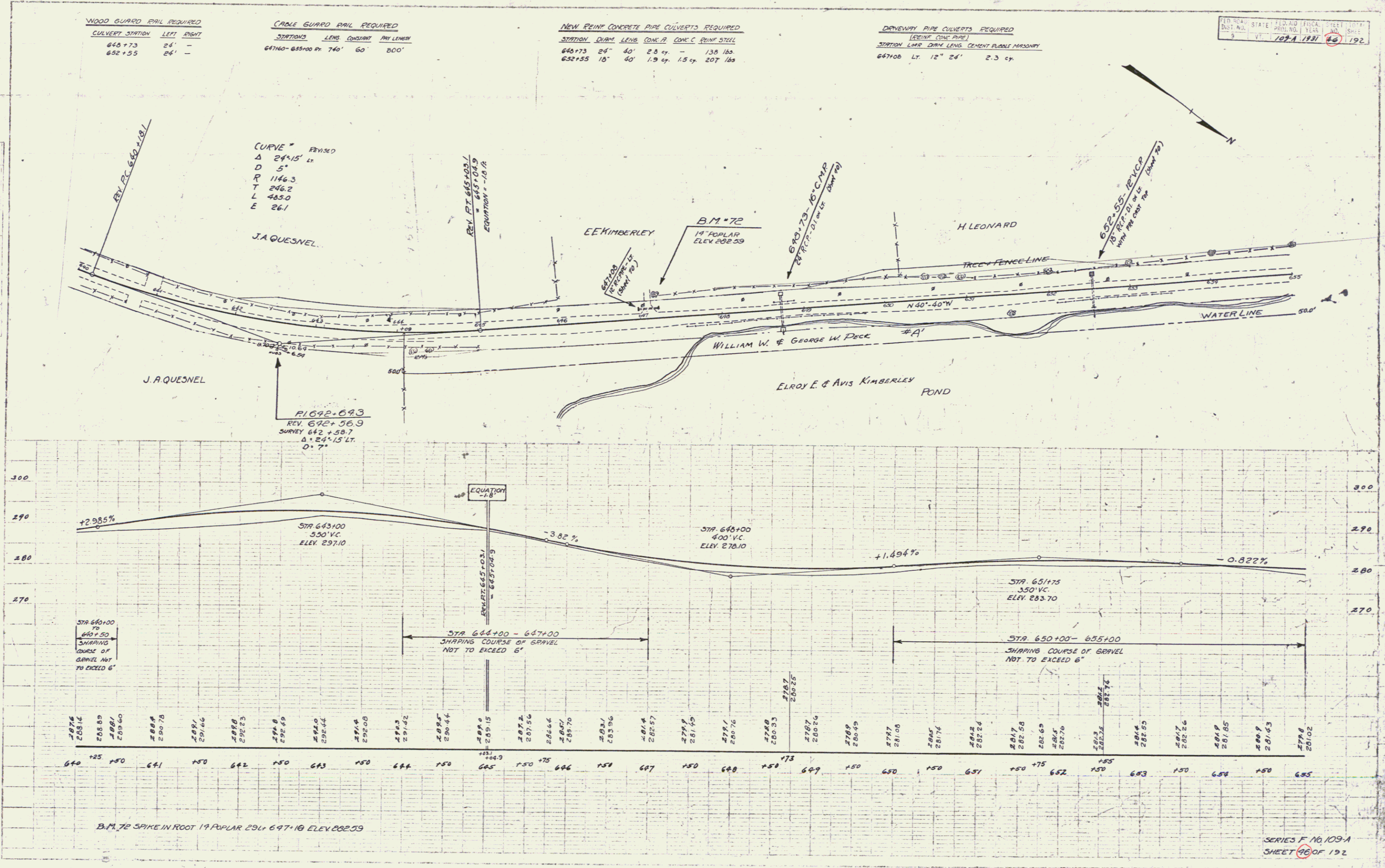
DRAINWAY PIPE CULVERTS REQUIRED

STATION	LENG.	DRAIN LEV.	CEMENT PLUMB. MASONRY
647+00	Lt. 12" 24"	-	2.3 cy.

PER STA. STATE PROJ. NO. YEAR SHEET NO. OF SHEETS
 9 VT. 109-A 1931 46 OF 192

REV. 1/10
 SIZE 1/8" = 1'-0"
 DATE 1/10/31

M.G. BROWN
 CIVIL ENGINEER
 1/10/31



B.M. 72 SPIKE IN ROOT 19 POPLAR 296' 647+10 ELEV. 282.39

SERIES F 109-A
 SHEET 46 OF 192

48