

WOOD GUARD RAIL REQUIRED

CULVERT STATION	LEFT	RIGHT
580+70	24'	24'
581+95	24'	24'
584+00	24'	24'
590+55	24'	24'
593+93	24'	24'

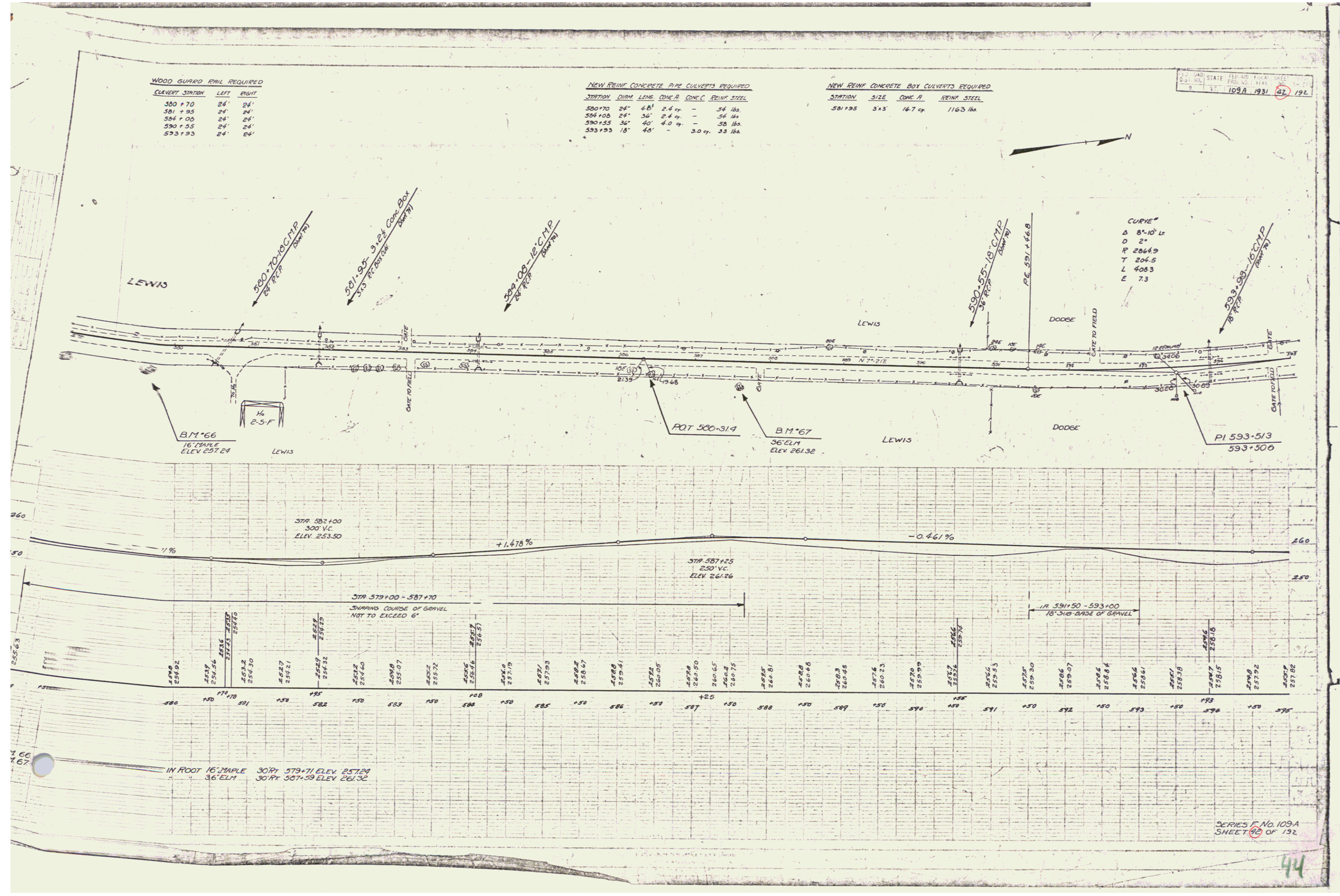
NEW REIN. CONCRETE PIPE CULVERTS REQUIRED

STATION	DIAM.	LENG.	CONC. A.	CONC. C.	REIN. STEEL
580+70	24"	48'	2.4 cy.	-	54 lbs.
584+00	24"	36'	2.4 cy.	-	54 lbs.
590+55	36"	40'	4.0 cy.	-	58 lbs.
593+93	18"	48'	-	3.0 cy.	33 lbs.

NEW REIN. CONCRETE BOX CULVERTS REQUIRED

STATION	SIZE	CONC. A.	REIN. STEEL
581+95	3'x3'	16.7 cy.	1163 lbs.

STATE ROAD DEPT. SHEET NO. 109A 1931 42 192



IN ROOT 16' MAPLE 30' RT 579+71 ELEV 257.24
30' RT 587+59 ELEV 261.32

SERIES F No. 109A
SHEET 42 OF 192

44