

**WOOD GUARD RAIL REQUIRED**

| CULVERT STATION | LEFT | RIGHT |
|-----------------|------|-------|
| 576+52          | 24'  | 24'   |

**CABLE GUARD RAIL REQUIRED**

| STATIONS      | LENG. | CONCR. FT. | PIV. LEV. INCH |
|---------------|-------|------------|----------------|
| 566+00-569+36 | 336'  | 40'        | 376"           |
| 566+00-567+04 | 104'  | 40'        | 144"           |
| 567+00-569+36 | 216'  | 40'        | 236"           |

**NEW REINF. CONCRETE PIPE CULVERTS REQUIRED**

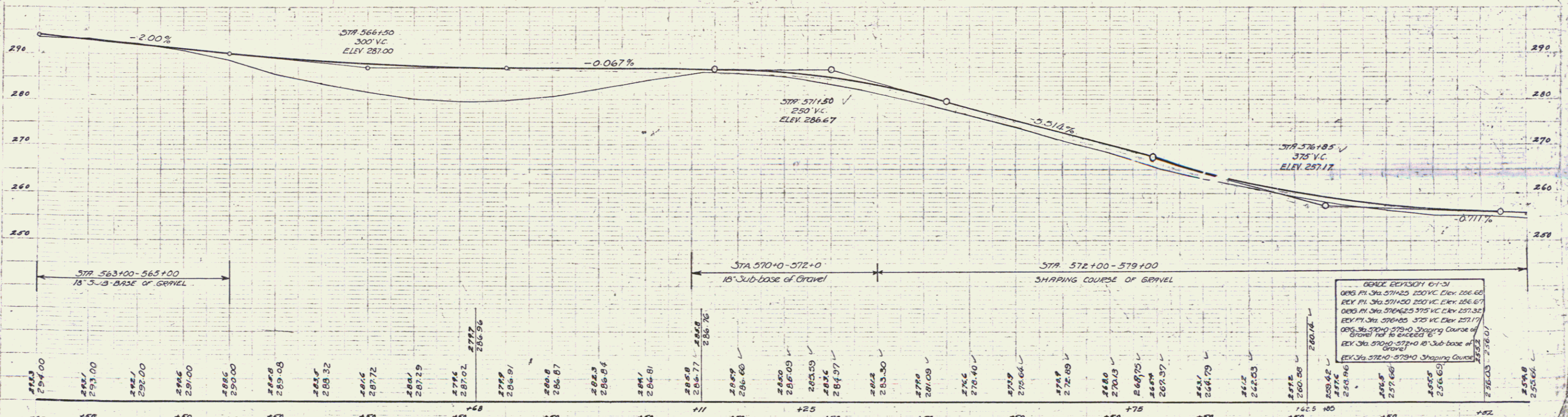
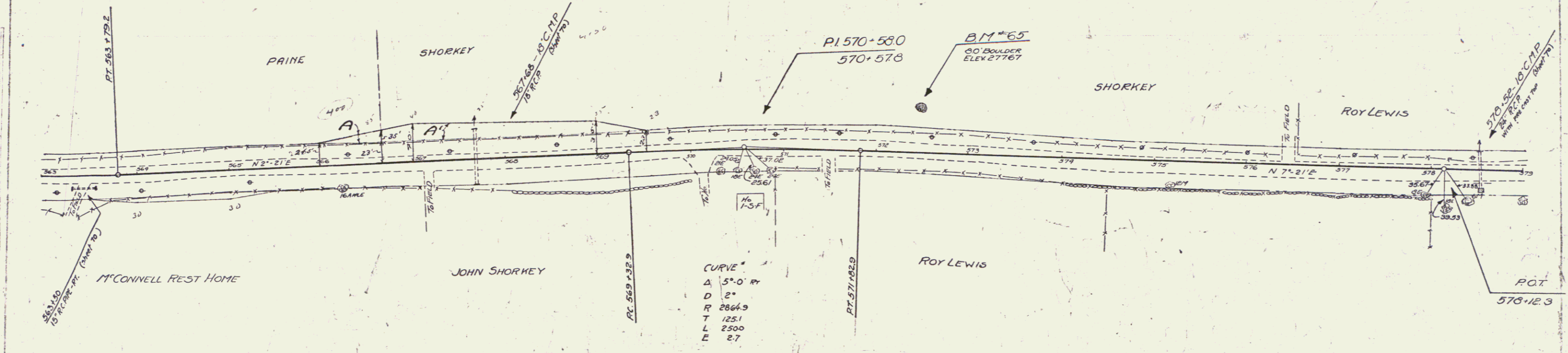
| STATION | DIAM. | LENG. | CONC. FT. | CONC. C. | REINF. STEEL |
|---------|-------|-------|-----------|----------|--------------|
| 567+65  | 18"   | 60'   | -         | 3.0 cy.  | 33 lbs.      |
| 578+52  | 24"   | 40'   | 2.9 cy.   | -        | 184 lbs.     |

**DRIVEWAY PIPE CULVERTS REQUIRED**

| STATION | LSH. R. | DIAM. | LENG. | CEMENT | RUBBLE | MASONRY |
|---------|---------|-------|-------|--------|--------|---------|
| 565+50  | RT.     | 15"   | 24'   | -      | -      | 2.7 cy. |

| Parcel | Kind of Instrument | Date of Instrument | Grantor           | Grantee | Recorded | Remarks |
|--------|--------------------|--------------------|-------------------|---------|----------|---------|
| A      | O.C.D.             | 6-19-31            | Ella L. Fawcett   | State   | GA 250   | 6-23-31 |
| A'     |                    | 5-23-21            | Carrie J. Shorkey |         | GA 244   | 5-23-31 |

STATE OF MISSISSIPPI  
 DISTRICT OF THE EAST  
 1099 1931 41 192



| STATION | ELEVATION |
|---------|-----------|
| 563     | 294.00    |
| 564     | 293.00    |
| 565     | 292.00    |
| 566     | 291.00    |
| 567     | 290.00    |
| 568     | 289.08    |
| 569     | 288.32    |
| 570     | 287.72    |
| 571     | 287.29    |
| 572     | 287.02    |
| 573     | 286.91    |
| 574     | 286.87    |
| 575     | 286.84    |
| 576     | 286.81    |
| 577     | 286.76    |
| 578     | 286.60    |
| 579     | 286.09    |
| 580     | 285.09    |
| 581     | 284.36    |
| 582     | 283.30    |
| 583     | 281.09    |
| 584     | 278.40    |
| 585     | 276.64    |
| 586     | 272.89    |
| 587     | 270.13    |
| 588     | 268.70    |
| 589     | 268.37    |
| 590     | 264.79    |
| 591     | 262.53    |
| 592     | 260.50    |
| 593     | 259.42    |
| 594     | 258.96    |
| 595     | 257.66    |
| 596     | 256.63    |
| 597     | 256.00    |
| 598     | 255.66    |
| 599     | 255.66    |

GRADE REVISION 6-1-31  
 005 PI 571+25 220' VC ELEV 286.60  
 006 PI 571+50 250' VC ELEV 286.67  
 007 PI 576+85 375' VC ELEV 287.17  
 008 PI 576+85 375' VC ELEV 287.17  
 009 PI 576+85 375' VC ELEV 287.17  
 010 PI 576+85 375' VC ELEV 287.17  
 011 PI 576+85 375' VC ELEV 287.17  
 012 PI 576+85 375' VC ELEV 287.17  
 013 PI 576+85 375' VC ELEV 287.17  
 014 PI 576+85 375' VC ELEV 287.17  
 015 PI 576+85 375' VC ELEV 287.17

SERIES NO. 109A  
 SHEET 41 OF 192

43