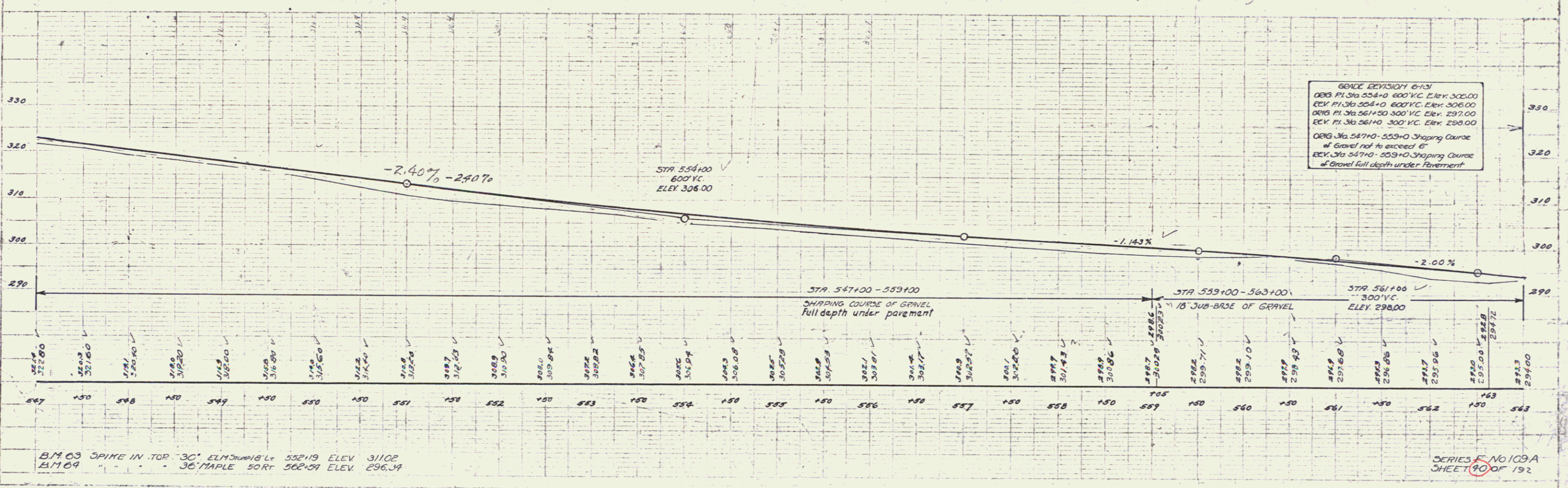
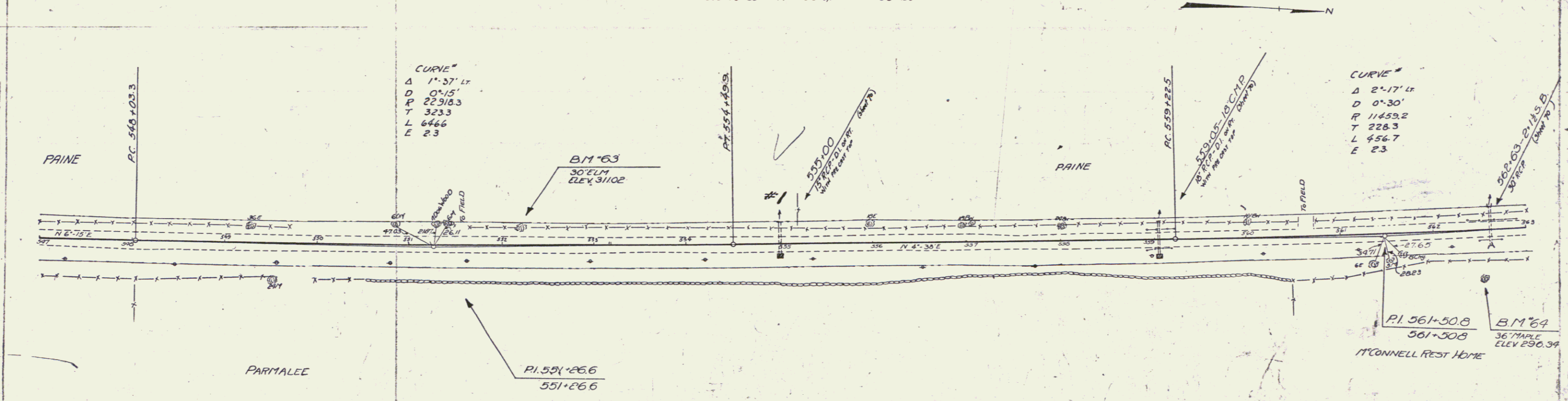


WOOD BURD RAIL REQUIRED		
CULVERT STATION	LEFT	RIGHT
555+00	24'	24'
559+05	24'	24'
562+63	24'	24'

Force	Kind of Instrument	Date of Instrument	Grantor	Grantee	Recorder	Remarks
Culvert #4	G.C.D.	6-19-31	Ellis L. Paine	Staff #4	Brandon	Book Page Date Sta. 555+00

NEW REINFORCED CONCRETE PIPE CULVERTS REQUIRED						
STATION	DIAM.	LENG.	CONC. A	CONC. C	REIN. STEEL	
555+00	15"	40'	2.2 cy	1.2 cy	222 lbs.	
559+05	10"	36'	2.4 cy	1.5 cy	240 lbs.	
562+63	30"	44'	3.2 cy	-	56 lbs.	

STATE OF IOWA
 DIST. NO. 4
 VI. 109A
 1931
 SHEET 40 OF 192



BM 63 SPIKE IN TOP 36" ELM IN 18" L^s 552+19 ELEV 311.02
 BM 64 36" MAPLE 562+39 ELEV 296.39

SERIES No 109A
 SHEET 40 OF 192

42