

WOOD GUARD RAIL REQUIRED

CULVERT STATION	LEFT	RIGHT
320+95	24'	24'
323+17	-	24'
325+36	-	24'
330+63	-	24'

CABLE GUARD RAIL REQUIRED

STATIONS	LENG.	CONSTANT	ANY LENGTH
322+80-327+04-LT	424'	40'	448'
330+24-331+60-LT	136'	40'	176'

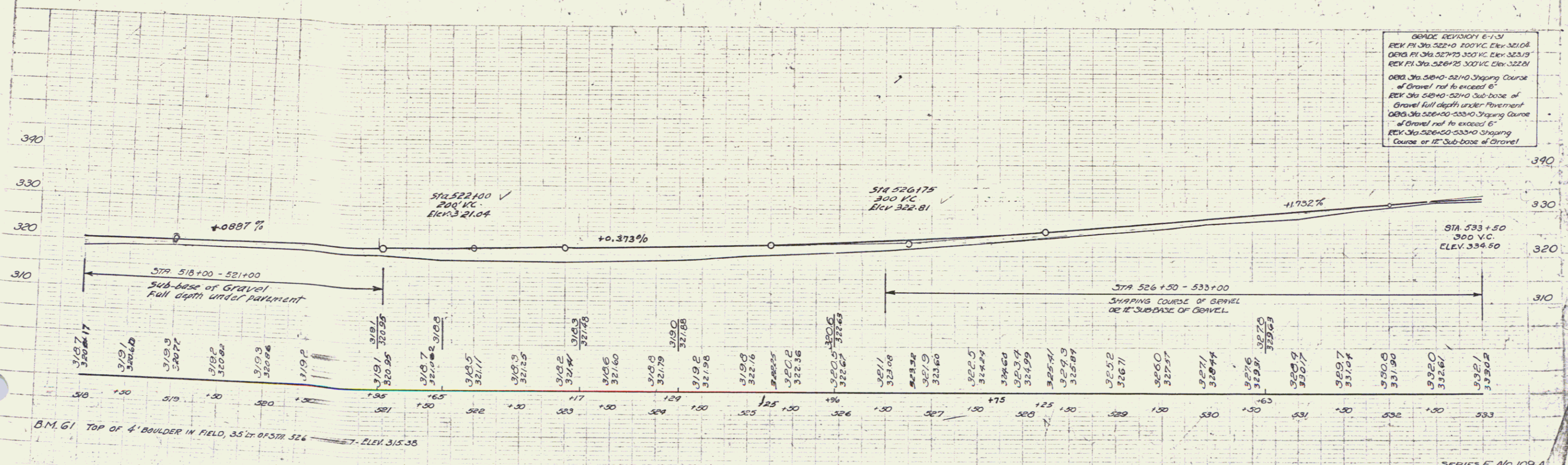
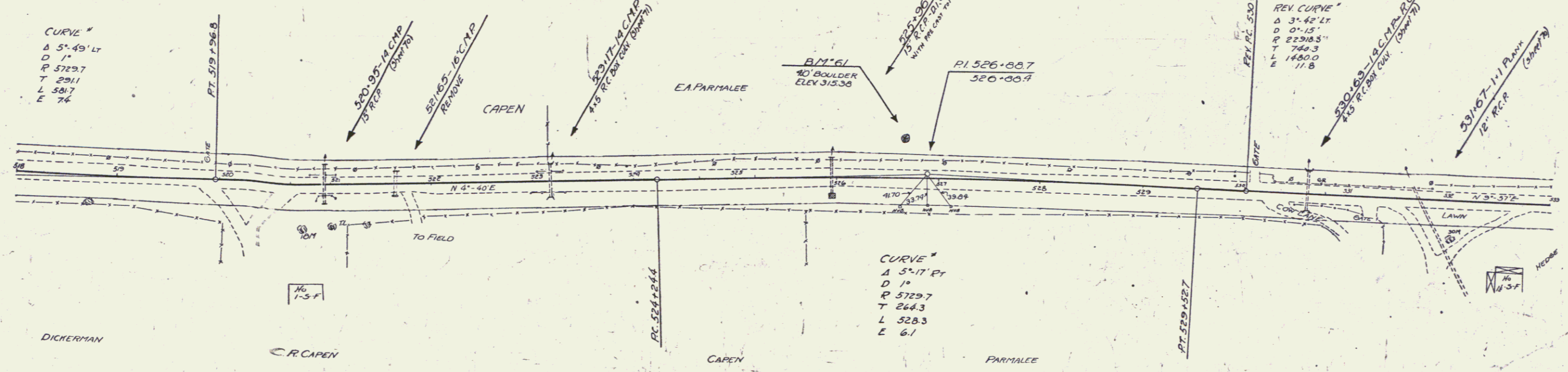
NEW REINF CONCRETE PIPE CULVERTS REQUIRED

STATION	DIAM	LENG.	CONC. P.	CONC. C.	REINF. STEEL
320+95	15"	40'	-	2.3 ft	53 lbs
325+36	15"	36'	2.2 ft	1.2 ft	207 lbs
331+67	12"	32'	-	0.9	17 lbs

NEW REINF CONCRETE BOX CULVERTS REQUIRED

STATION	SIZE	CONC. P.	CONC. C.	REINF. STEEL
323+17	4'x5'	24.9 ft	-	2183 lbs
330+63	4'x5'	29.7 ft	-	2433 lbs

STATE OF OHIO
 DIST. NO. 109A
 YEAR 1931
 SHEET 38 OF 197



GRADE REVISIONS 6-1-31
 REV. PI 318.522+00 300 V.C. Elev. 321.04
 ORIG. PI 318.527+75 300 V.C. Elev. 323.19
 REV. PI 318.526+75 300 V.C. Elev. 322.81
 ORIG. STA 318+00-321+00 Shaping Course of Gravel not to exceed 6"
 REV. STA 318+00-321+00 Sub-base of Gravel full depth under Pavement
 ORIG. STA 326+00-333+00 Shaping Course of Gravel not to exceed 6"
 REV. STA 326+00-333+00 Shaping Course of 12" Sub-base of Gravel

SERIES F. No. 109-A
 SHEET 38 OF 197

40