

WOOD GUARD RAIL REQUIRED

CULVERT STATION	LEFT	RIGHT
503+50	-	24'

CABLE GUARD RAIL REQUIRED

STATIONS	LENS	CONSTANT	PIV LENGTH
503+38-507+86	448'	40'	488'

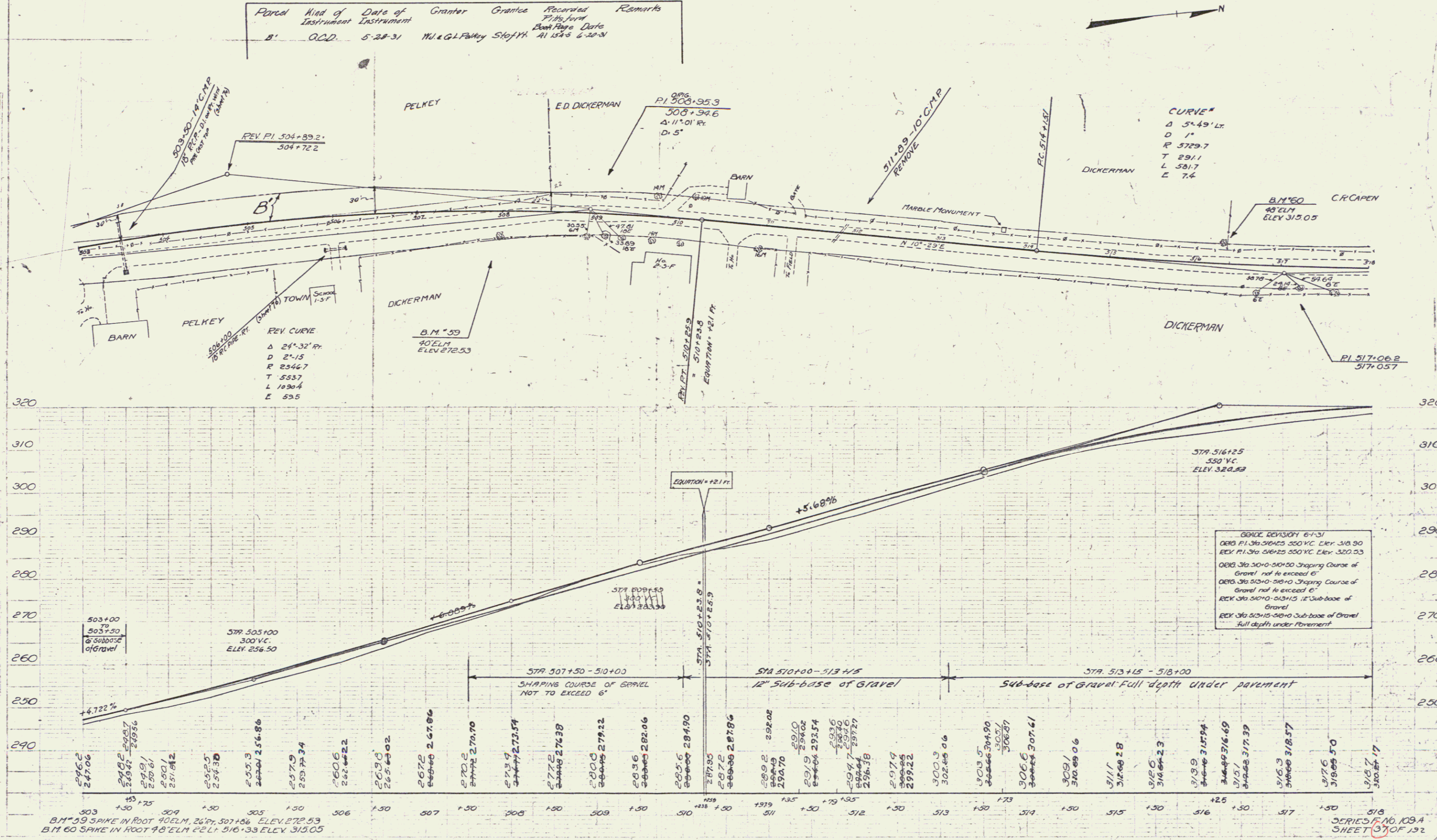
NEW REINF. CONCRETE PIPE CULVERTS REQUIRED

STATION	DIAM.	LENG.	CONC. A	CONC. C	REINF. STEEL
503+50	18"	56'	1.5 cy	1.5 cy	174 lbs

DRENCHWAY PIPE CULVERTS REQUIRED
(BEING CONC. PIPE)

STATION	LENG.	DIAM.	LENG.	CONCRETE	SUB-BASE	MANHOLE
506+00	Rt	18"	24'	3.3 cy		

Parcel	Kind of Instrument	Date of Instrument	Grantor	Grantee	Recorded File No.	Remarks
B'	O.C.D.	5-28-31	M. & G. L. Fawcett	Stef. Y. H.	41 154-5	6-20-31



GRADE REVISION 6-1-31
 ORIG. P.I. 304.01425 550 Y.C. Elev. 310.90
 REV. P.I. 304.01425 550 Y.C. Elev. 320.33
 ORIG. Sta. 510+00-510+00 Shaping Course of Gravel not to exceed 6"
 ORIG. Sta. 510+00-510+00 Shaping Course of Gravel not to exceed 6"
 REV. Sta. 510+00-510+00 12" Sub-base of Gravel
 REV. Sta. 510+15-510+00 Sub-base of Gravel full depth under pavement

BM 59 SPIKE IN ROOT 40 ELM. 26 FT. 507+86 ELEV. 272.53
 BM 60 SPIKE IN ROOT 98 ELM. 22 FT. 516+33 ELEV. 313.05

SERIES NO. 109A
 SHEET 37 OF 132

31