

WOOD GUARD RAIL REQUIRED

CULVERT STATION	LEFT	RIGHT
474+00	24'	24'
480+00	24'	24'
484+62	24'	24'

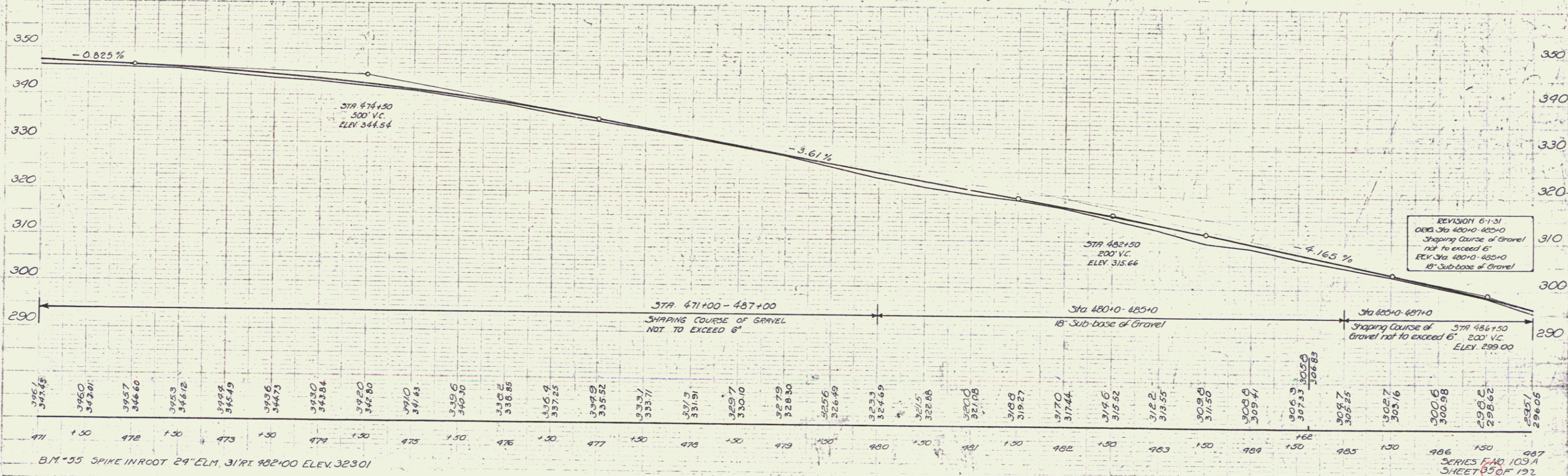
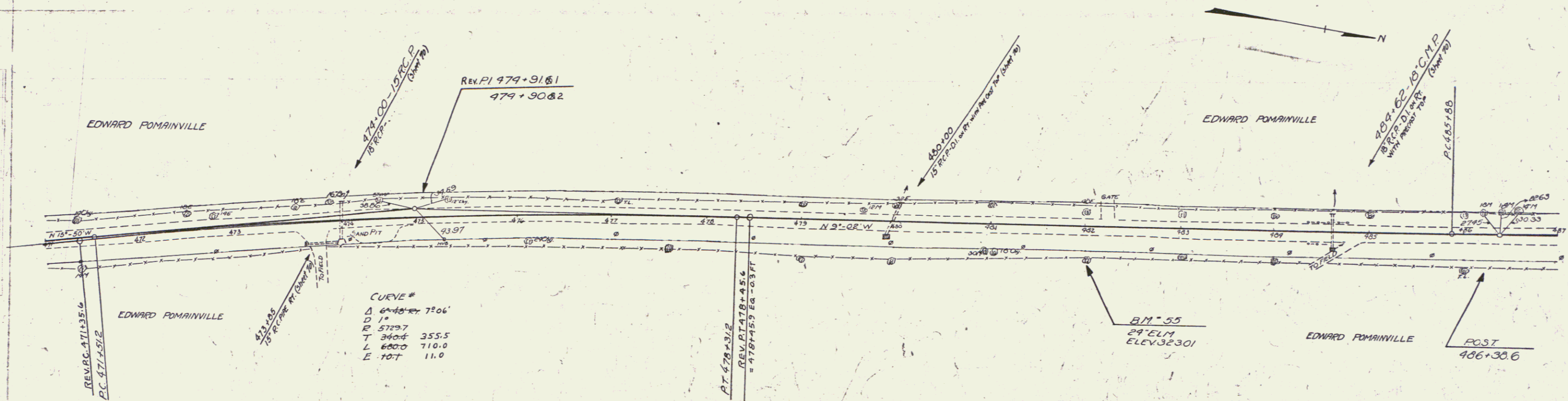
NEW REINFORCED CONCRETE PIPE CULVERTS REQUIRED

STATION	DIAM.	LENG.	CONC. A	CONC. B	REIN. STEEL
474+00	18"	60'	12 cy	1.5 cy	44 lbs
480+00	15"	36'	2.2 cy	1.2 cy	27 lbs
484+62	18"	36'	2.2 cy	1.5 cy	207 lbs

DRIVEWAY PIPE CULVERTS REQUIRED

STATION	LEN.	DIAM.	LENG.	CEMENT RUBLE MAINT.
473+85	15'	24"	1.3 cy	

STATE OF CALIFORNIA
COUNTY OF ST. LUIS
109-A 1931 85 192



REVISION 6-1-51
OBS. STA 480+00 - 485+00
Shaping Course of Gravel
not to exceed 6"
Elev. Sta. 480+00 - 485+00
18" Sub-base of Gravel

B.M. 55 SPIKE IN ROOT 24" ELM. 31' RT 482+00 ELEV. 323.01

SERIES F-40 109-A
SHEET 85 OF 192

37