

WOOD GUARD RAIL REQUIRED

CULVERT STA	LEFT	RIGHT
459+62	24'	24'
470+35	24'	—

WOOD GUARD POSTS REQUIRED

CULVERT STA	LEFT	RIGHT
462+95	1	1
467+00	1	1
470+35	—	1

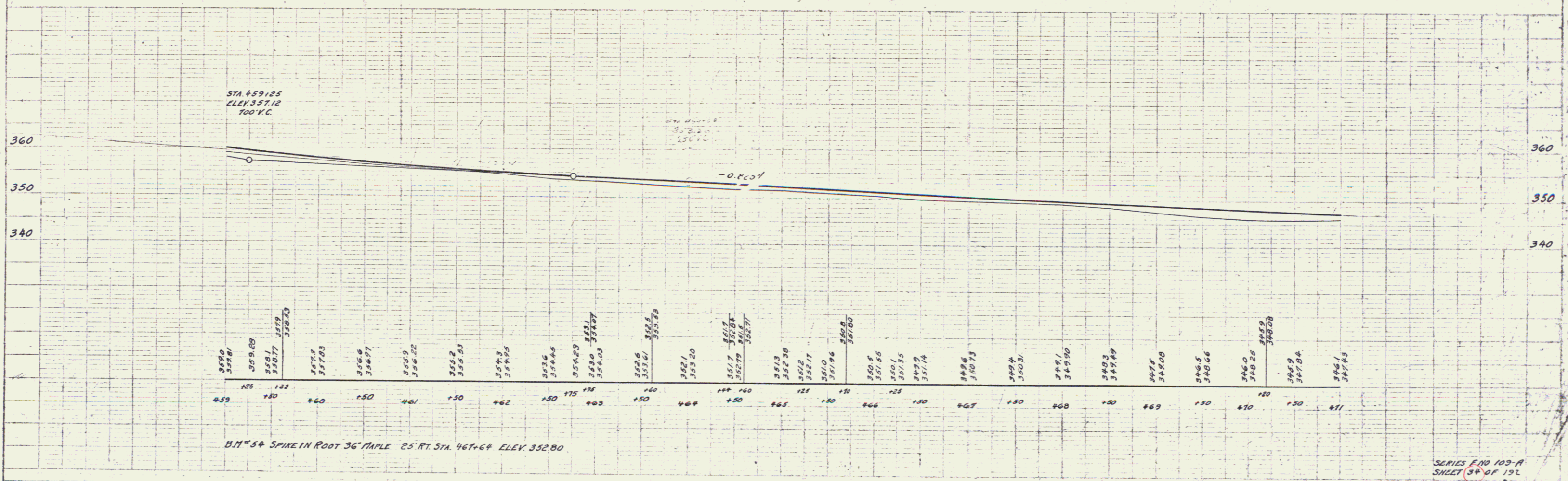
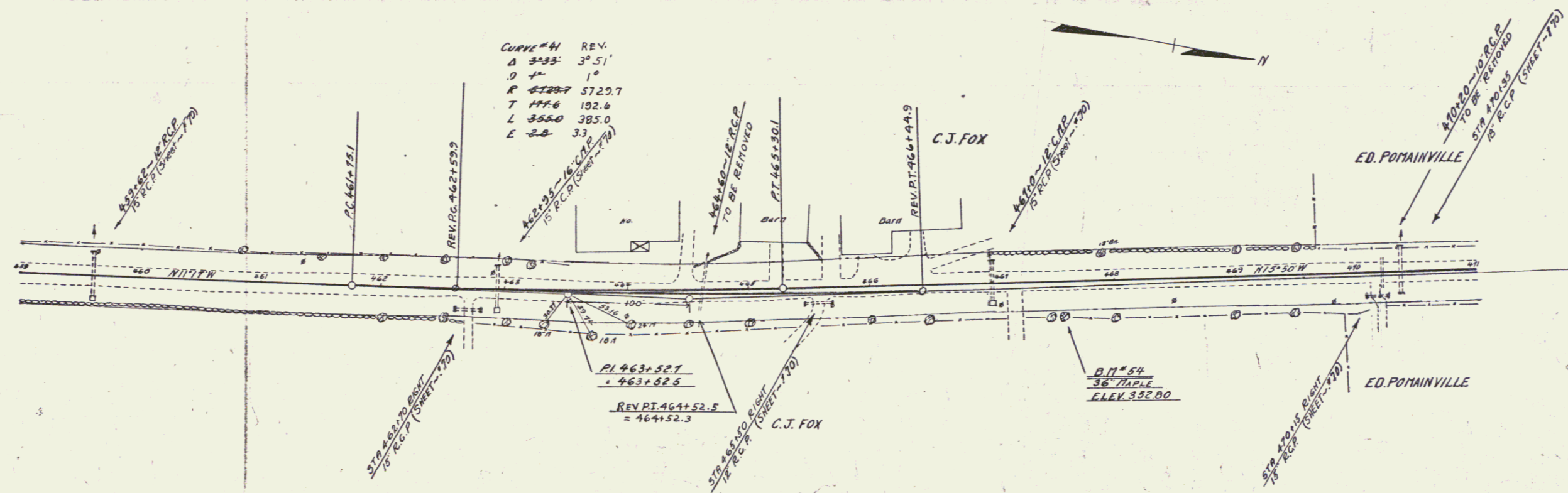
NEW REIN. CONCRETE PIPE CULVERTS REQUIRED

STATION	DIAM.	LENS	CONC. A	CONC. C	REIN. STEEL
459+62	15"	36'	14 cy	12 cy	116 lbs.
462+95	15"	36'	14 cy	12 cy	116 lbs.
467+00	15"	36'	14 cy	12 cy	116 lbs.
470+35	18"	40'	—	23 cy	33 lbs.

DRIVEWAY PIPE CULVERTS REQUIRED
(DRINKING CONG. PIPE)

STATION	LOSR	DIAM.	LENS	CEMENT RUSKLE MASONRY
462+70	R	15"	36'	25 cy
465+50	R	12"	36'	23 cy
470+15	R	15"	28'	26 cy

109A 193 34 12



SERIES E 100 100-A
SHEET 34 OF 192

36