

CABLE GUARD RAIL REQUIRED

STATIONS	LENG	CONSTANT	PIV LENGTH
429+00-432+00 LT	30'	40'	344'
429+00-432+00 RT	30'	40'	344'

CULVERT REPAIRS REQUIRED

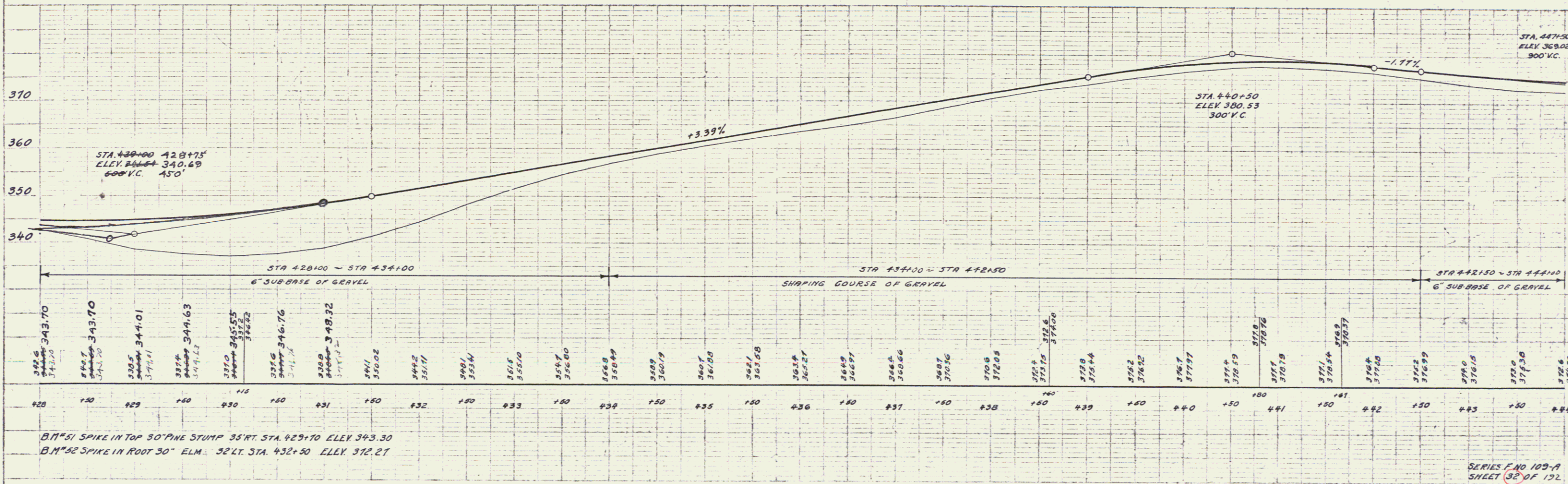
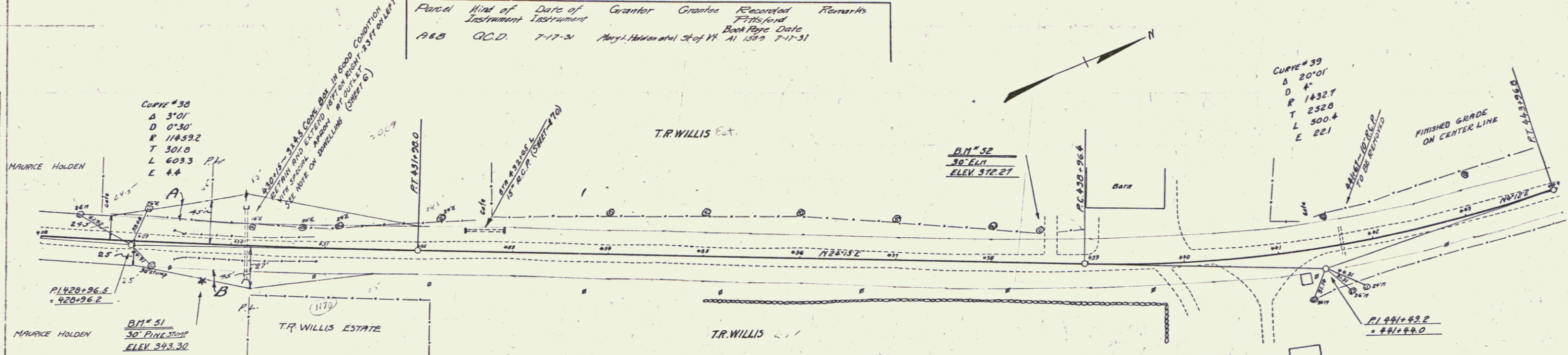
STATION	TYPE	EXTENSION	CONC. A	REIN. STEEL
420+15	3x45	10'-0" - 23'-0"	2"x4"	1025 lbs.

DRIVEWAY PIPE CULVERTS REQUIRED

STATION	LOEP	DIAM	LENG	CEMENT	FINISH	MOORNEY
432+55	L	15"	40'	26 cy.		

PLANNING STATE ROAD DIST. NO. 109A 1931 32 19L

Period	Kind of Instrument	Date of Instrument	Grantor	Grantee	Recorded	Remarks
A & B	G.C.D.	7-17-31	Mary J. Holden et al	State of VT	A 1359	7-17-31



B.M. 51 SPIKE IN TOP 30" PINE STUMP 35' RT. STA. 429+70 ELEV. 343.30
 B.M. 52 SPIKE IN ROOT 30" ELM. 32' LT. STA. 432+50 ELEV. 372.27

SERIES F NO 109-A
 SHEET 32 OF 192