

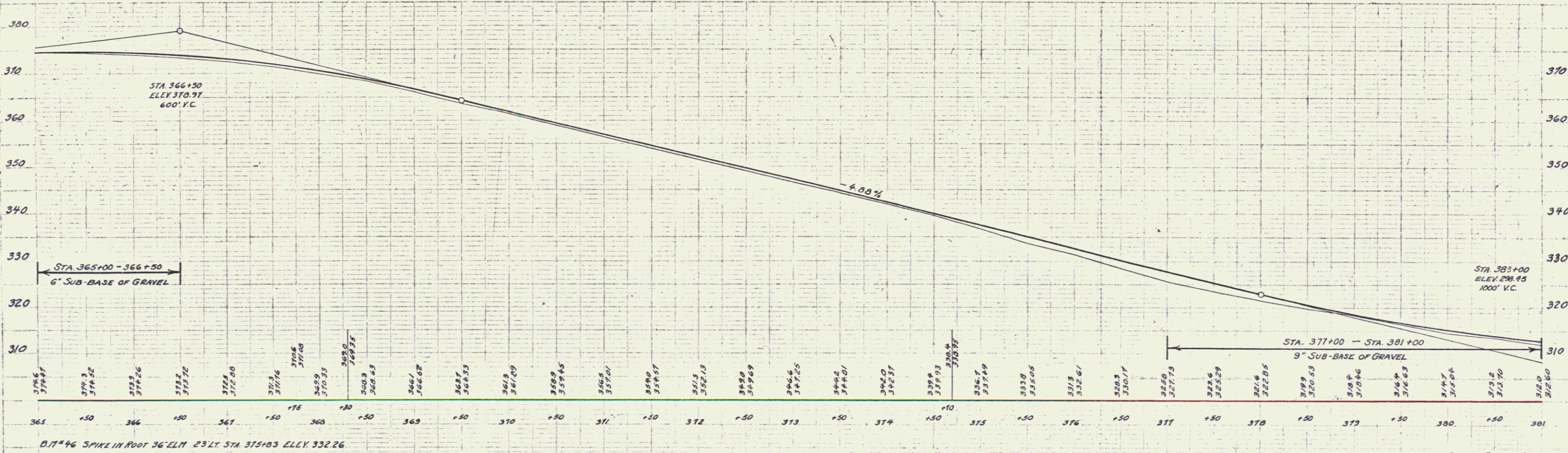
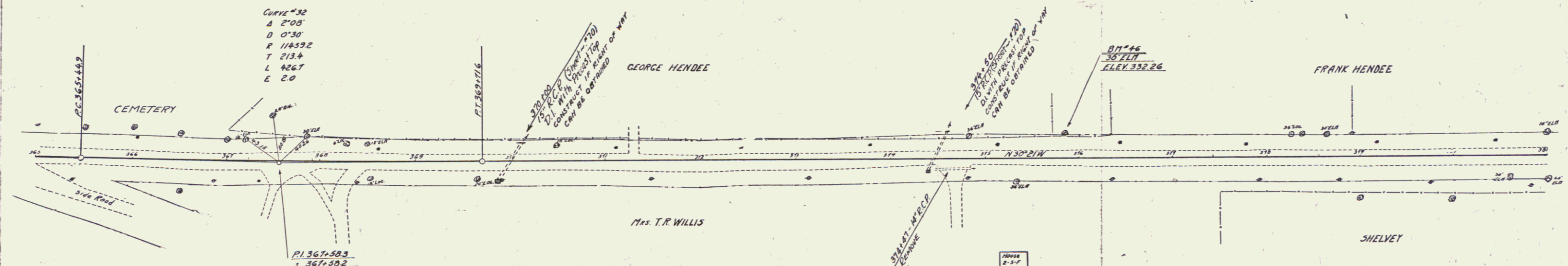
**WOOD GUARD RAIL REQUIRED**

GENERAL STA	LEFT	RIGHT
370+00	24'	24'
374+00	24'	24'

**NEW REINFORCED CONCRETE PIPE CONCRETS REQUIRED**

STATION	DIM	LENG	CONC. A	CONC. C	REIN. STEEL
370+00	15'	48"	15cy	12cy	174lbs.
374+50	15'	48"	15cy	12cy	174lbs.

STATE OF IOWA  
 DIVISION OF HIGHWAYS  
 109A 1981 20 192



DIT#46 SPIKE IN ROOT 36' ELM 25' LT. STA 375+03 ELEV 332.26

SERIES E NO 109A  
 SHEET 20 OF 192

30