

WOOD GUARD POSTS REQUIRED

CULVERT STA	LEFT	RIGHT
359+70	1	

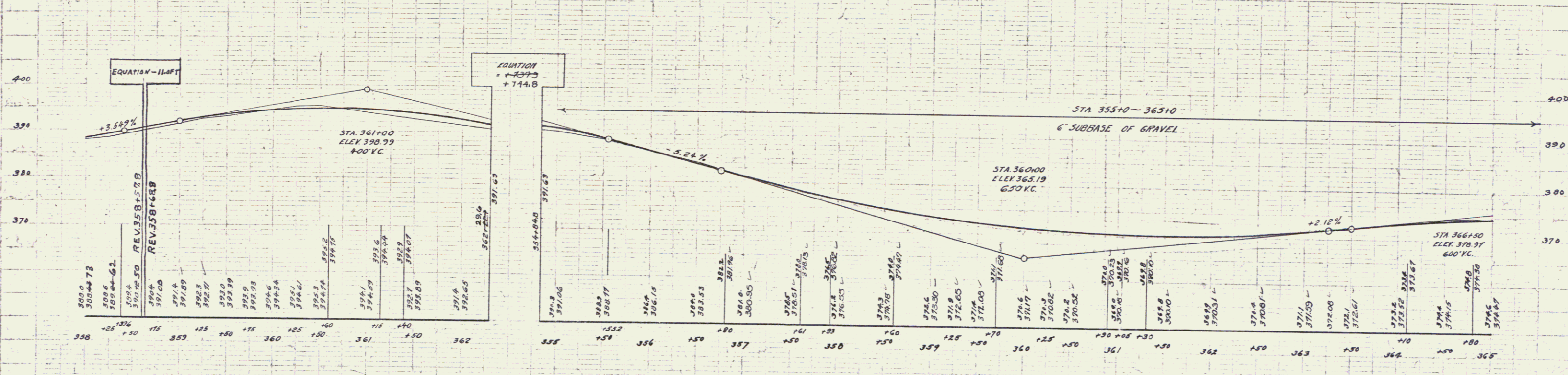
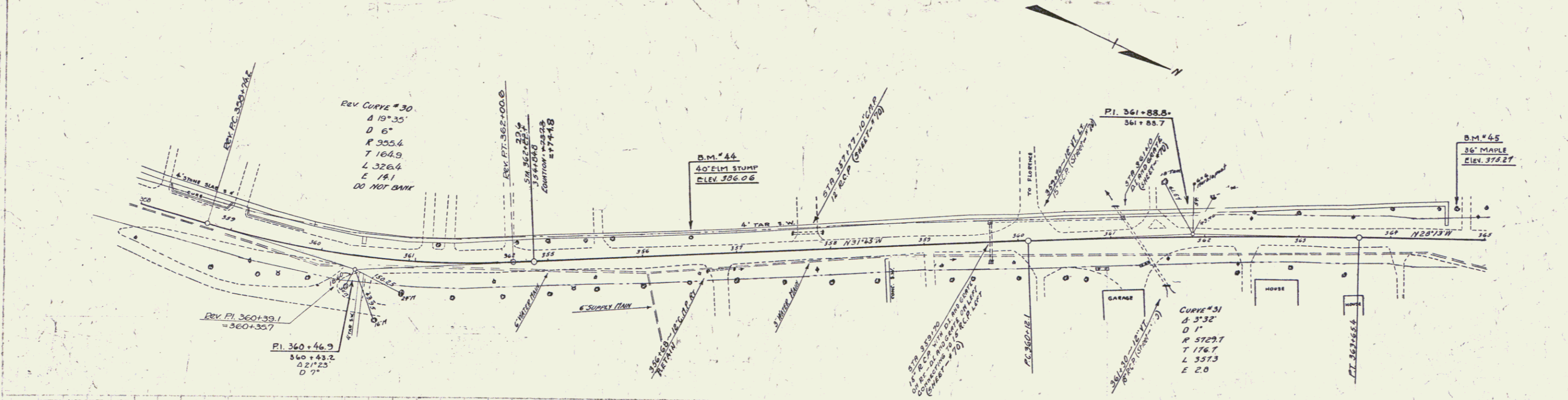
NEW REINFORCED CONCRETE PIPE CULVERTS REQUIRED

STATION	DIA.	LONG.	CONC. A	CONC. C	REIN. STEEL	D.I. GRATES
359+70	15"	44'	28cy	-	198 lbs.	2 Grates to be paid for by town
361+30	18"	100'	144cy	30cy	1320 lbs.	

DRIVEWAY PIPE CULVERTS REQUIRED

STATION	LONG.	DIA.	CONC. A	CONC. C	REIN. STEEL	D.I. GRATE
357+71	18'	32"	23cy	-	-	-
359+70	15'	140"	-	-	-	-

109-A 138 27 19L



B.M.#44 SPIKE IN TOP 40' ELM STUMP 18' LT. STA. 356+53 ELEV. 326.06
 B.M.#45 SPIKE IN ROOT 36' MAPLE 32' LT. STA. 364+70 ELEV. 375.27

REVISION 6/7/31
 ORIG. STA. 360+00 600' VC. ELEV. 365.19
 REV. STA. 360+00 650' VC. ELEV. 365.19

SERIES F. NO. 109-A
 SHEET 27 OF 19L