

**CABLE GUARD RAIL REQUIRED**  
 STATIONS LENS CONSTANT BY LENS  
 347+00-352+04.1 54' 40' 544'

**REINF CONC BOX CULVERT REQUIRED**  
 STATION SIZE CONC REINF STEEL  
 350+29 3x3 250 cu ft 772 lbs

**RELAYING PIPE CULVERTS REQUIRED**  
 STATIONS LENS CEM. PLS MASONRY  
 351+75-352+90 115' 13 cu ft

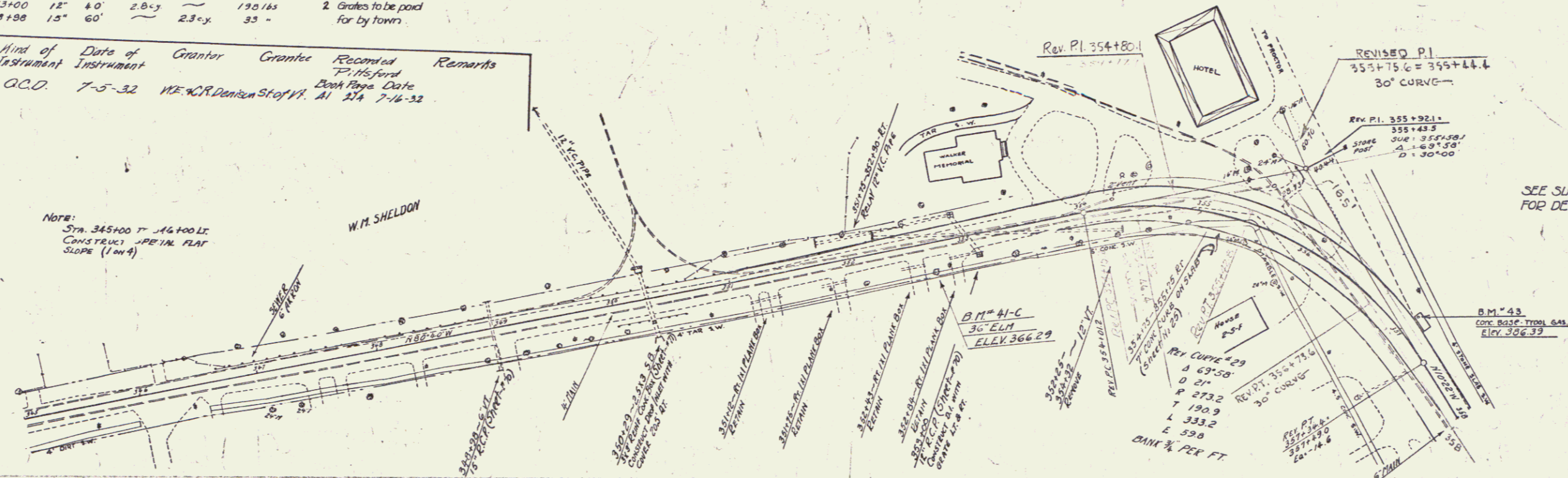
**CONCRETE CURB REQUIRED**  
 STATIONS LENS CONC REINF STEEL  
 354+75-355+75 1' 11' 11 cu ft 67 lbs  
 Curb to be paid for by town

REGISTERED STATE ENGINEER  
 DIVISION OF HIGHWAYS  
 109A 1931 26A 192

**NEW REINF CONCRETE PIPE CULVERTS REQUIRED**  
 STATION DIAM LENS CONC REINF STEEL OI GENTE  
 353+00 12' 60' 2.8-y 190 lbs 2 Grades to be paid  
 348+98 15' 60' 2.3-y 33 - for by town

Parcel	Kind of Instrument	Date of Instrument	Grantor	Grantee	Recorded	Remarks
A	O.C.D.	7-5-32	W.E. & R. Denton	Steph. W. At	37A	7-14-32

NOTE:  
 STA. 345+00 TO 346+00 LI  
 CONSTRUCTED PER IN. FLAT  
 SLOPE (1 on 4)

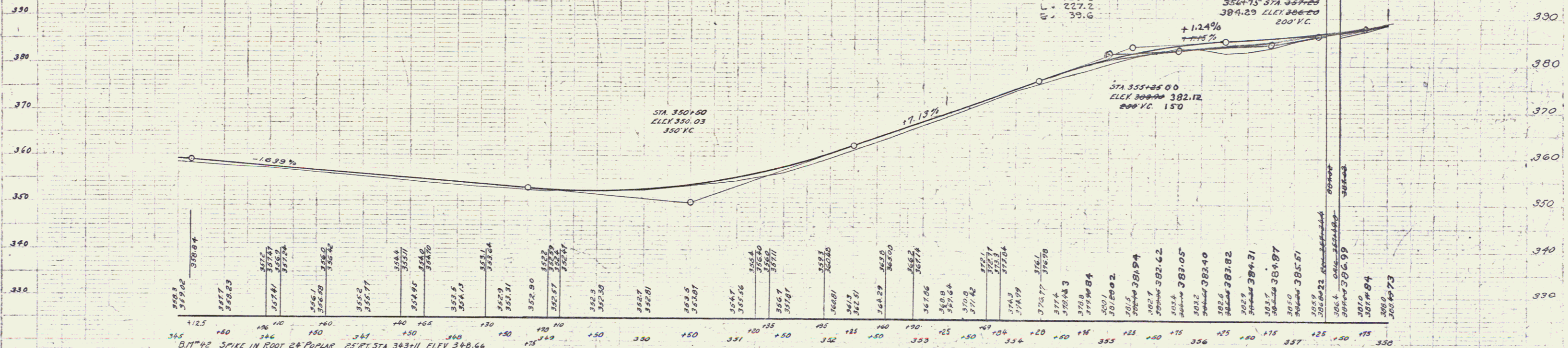


SEE SUPPLEMENTARY SHEET FOR DETAILS OF INTERSECTION

NOTE: DRIVEN CULVERTS STATIONS  
 351+12, 351+15, 352+13 and 352+18 +  
 TO BE MAINTAINED IN PRESENT CONDITION

SEE DETAIL SHEET NO. FOR PAVEMENT LAYOUT ON THIS CURVE

REVISED CURVE  
 Δ = 68° 10' RT.  
 R = 153.2  
 T = 129.2  
 L = 227.2  
 E = 39.6



B.M. 42 SPIKE IN ROOT 24' POPLAR 25' RT. STA. 343+11 ELEV. 348.66  
 B.M. 43 SPOT ON CONC FOUNDATION 38' LT. STA. 349+66 ELEV. 386.39  
 B.M. 44-C SPIKE IN ROOT 36' ELM 22' RT. STA. 352+71 ELEV. 366.29

SERIES END 109-A  
 SHEET 26A OF 152