

Parcel	Kind of Instrument	Date of Instrument	Grantor	Grantee	Recorded F. No.	Recorded Date	Remarks
A	Q.C.D.	4-29-31	H.H. Parbody	Sh. of Yk.	A1 125	5-2-31	
A'	"	6-19-31	Marrett S. Neil	"	A1 134	6-20-31	
A"	"	1-15-32	Rena B. Ayer et al	"	A1 134-6	1-15-32	

NEW REINF CONC PIPE CULVERTS REQUIRED

STATION	DIAM	LENS	CONCR	CONC	REINF STEEL	REMARKS
320+11.5	18"	76'	14-cs	12-cy	1/2" L8s	
322+76	15"	48'	2.8-cs	12'	2/5" L8s	

DRIVEWAY PIPE CULVERTS REQUIRED

STATION	LENS	CONCR	CONC	REINF STEEL	REMARKS
328+70	R 12'	40'		23-cy	

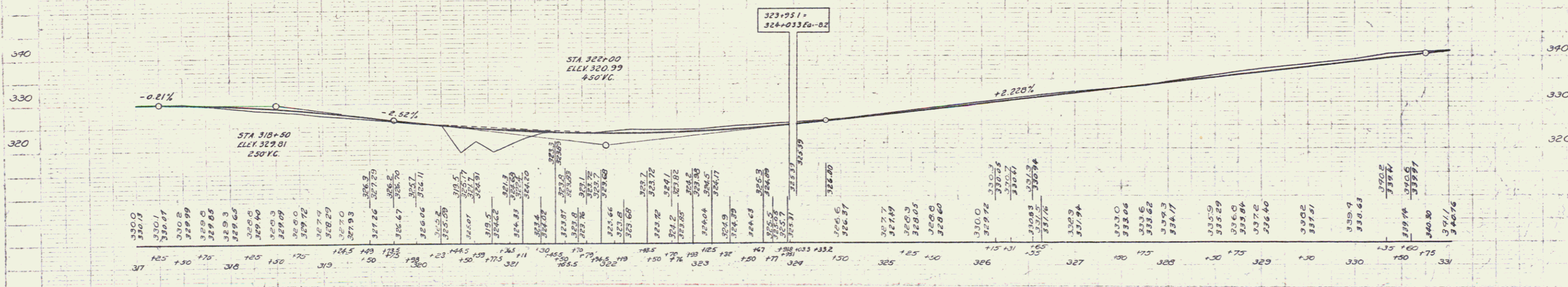
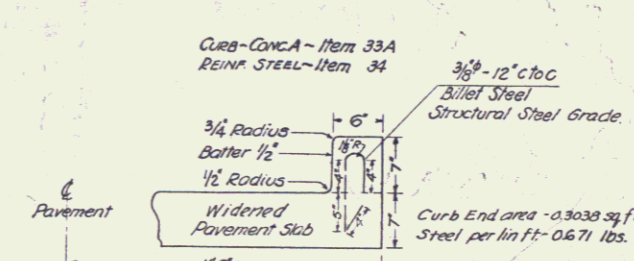
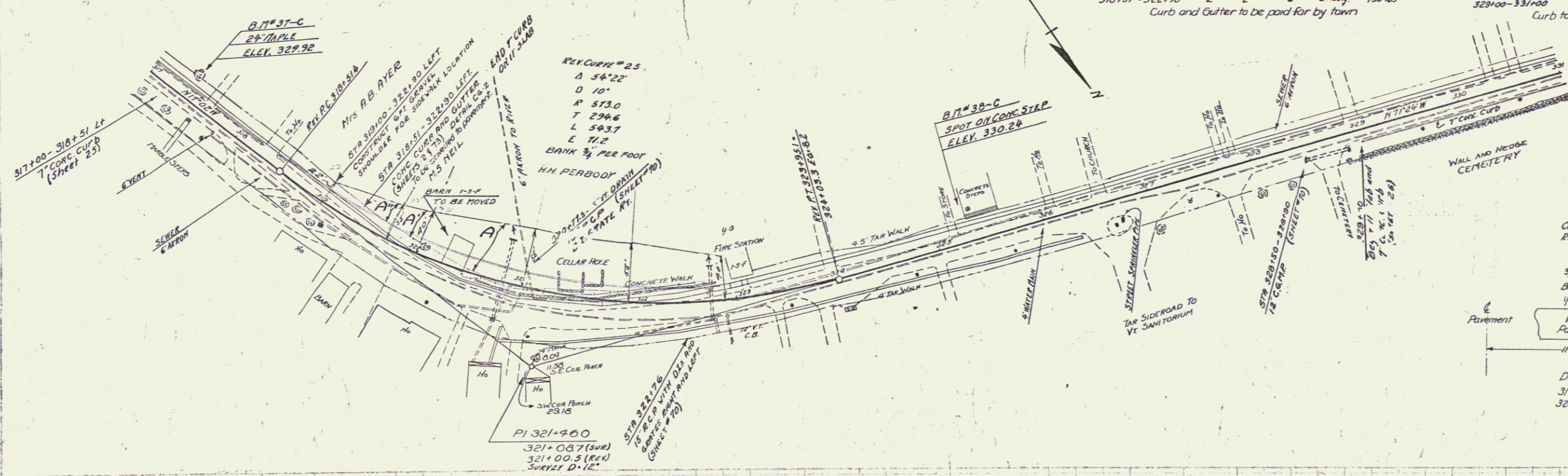
CONCRETE CURB AND GUTTER REQUIRED

STATIONS	LENS	CURB	CONC	REINF STEEL	REMARKS
318+51 - 322+90	L	2'	6"	21L-4	790 lbs
328+100 - 331+00	R	7'	22-cy	184-	

CONCRETE CURB REQUIRED

STATIONS	LENS	CURB	CONC	REINF STEEL	REMARKS
317+0 - 318+51	L	7'	16-cs	101 lbs	
328+100 - 331+00	R	7'	22-cy	184-	

109-A 1931 25 192



B.M. 31-C SPIKE IN ROOT 24' MAPLE 20' LT. STA 317+39 ELEV 329.92
 B.M. 38-C SPOT ON CONC STEPS LT. STA. 325+30 ELEV 330.24