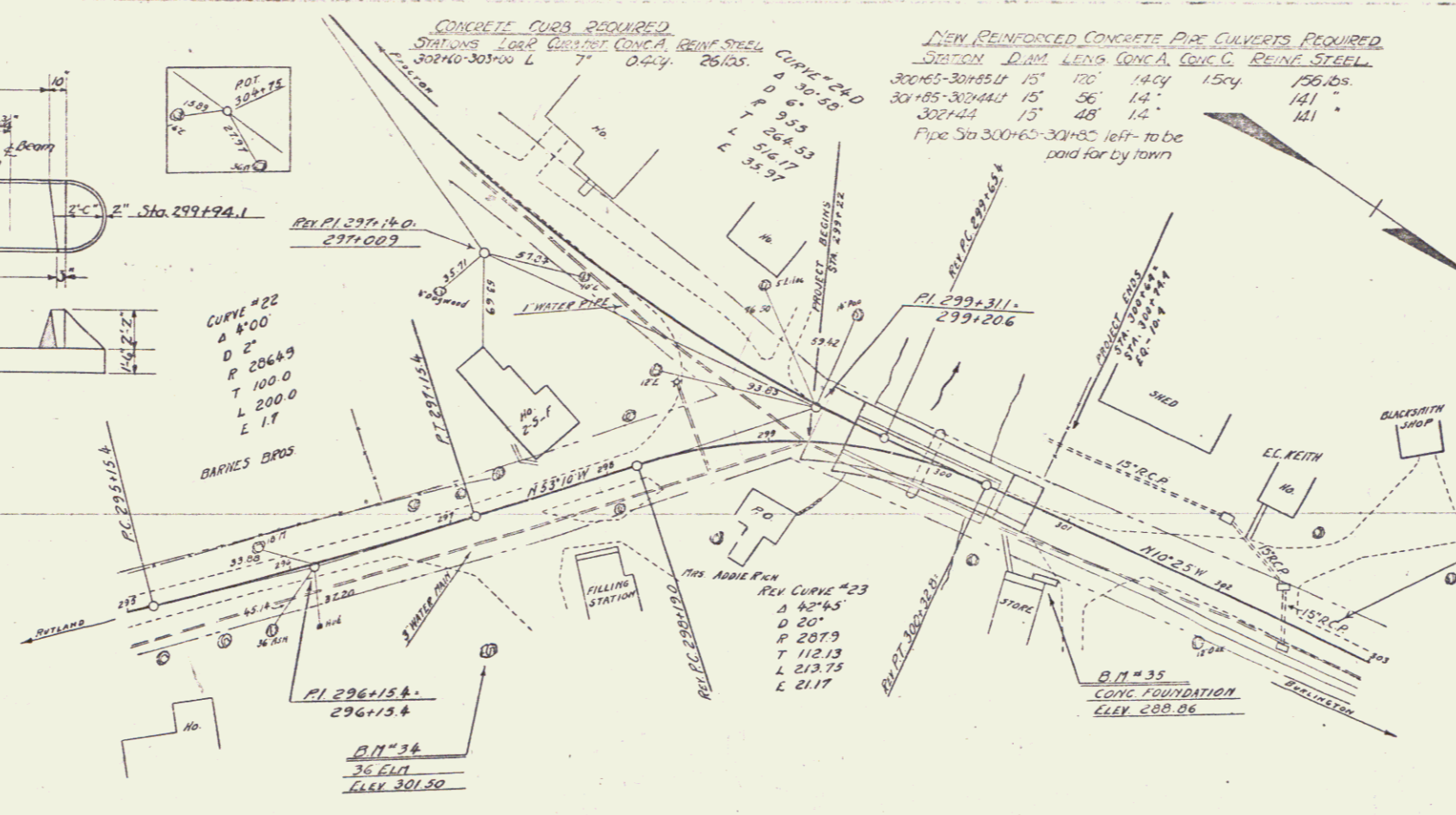


PIER DETAILS
STA. 299+94.1

Use for Sheet #3 modified as follows:
 $H = 30'$
 $B_1 = 5'-2"$
 $B_2 = 8'-8"$
 (Upstream = 20'-8")
 (Downstream = 18'-3")
 $D_1 = 2'-10"$
 $D_2 = 4'-4"$



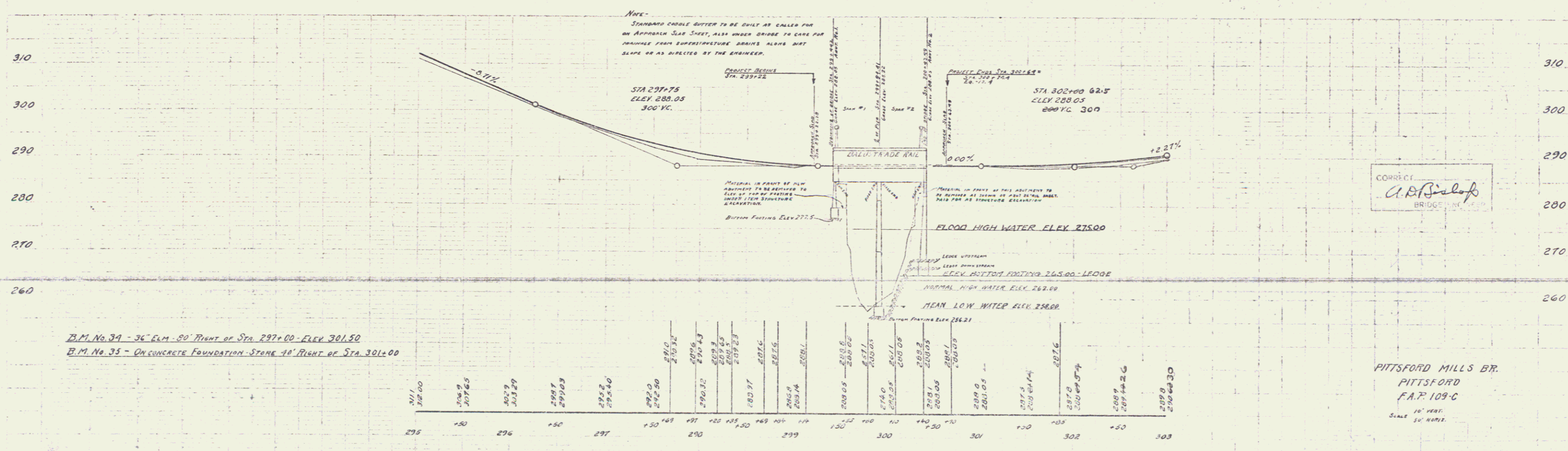
SUMMARY OF QUANTITIES

ITEM No. 10.11	COMMON EXC. INCL. BORROW	100 Cu. Yds.	109.3	17
- 15	STRUCTURE EXCAVATION	543 Cu. Yds.	109.4	23
- 23	ONE COURSE CONCRETE PAVE.	65 "		
- 33A	CONCRETE - CLASS A	224.2 "		
- 33B	CONCRETE - CLASS B	49.9 "		
- 33C	CONCRETE - CLASS C	295.0 "		
- 11B	GROUTED COBBLE GUTTER	72 Sq. Yds.		
- 34	REINFORCING STEEL	81760 LBS.		
- 55	TEMPORARY BRIDGE	1 L. SUM.		
	BALUSTRADE RAIL	136 Lin. Ft.		
	CONDUITS FOR LIGHTING SYSTEM	1 L. SUM.		

ITEM No. 62 RIP RAP FOR BANK PROTECTION 81 Cu. Yds.

NOTES
 THESE PLANS REVISED 2-16-31 AS FOLLOWS:
 FLOOD WATER ELEV. REVISED FROM EL. 263.00 TO EL. 275.00.
 PIER CHANGED FROM OPEN TO PROTECTED STANDARD PIER.
 ABUT. No. 2 CHANGED FROM STUB TO ABUTMENT.
 RIPRAP ADDED AT ABUT. No. 2.

NOTES -
 ALL LOGS AND THE ROADS IN PRESENT SUPERSTRUCTURE SHALL REMAIN THE PROPERTY OF THE TOWN. THE REMAINING MATERIALS IN PRESENT SUPERSTRUCTURE SHALL BECOME THE PROPERTY OF THE CONTRACTOR AND SHALL BE ACCEPTED BY HIM AS FULL COMPENSATION FOR THE REMOVAL AND DISPOSAL OF THE ENTIRE SUPERSTRUCTURE, INCLUDING THE REMOVAL AND STOCK PILING OF THE BOLTS AND THE ROADS MENTIONED ABOVE.
 THE CONTRACTOR SHALL MAINTAIN ALL TRAFFIC AND SHALL BUILD AND MAINTAIN A TEMPORARY BRIDGE OF 15 TON CAPACITY. HE SHALL ALSO MAINTAIN EITHER THE PRESENT WATER MAIN IN ITS PRESENT CAPACITY OR A TEMPORARY WATER MAIN OF AT LEAST THE SAME CAPACITY THROUGH THE LIMITS OF HIS WORK. HE SHALL ALSO ALLOW ACCESS TO THE WORK TO THE REPRESENTATIVE OF THE TOWN OF PITTSFORD FOR THE PURPOSE OF INSTALLING A NEW WATER MAIN ACROSS THE NEW BRIDGE.



B.M. No. 34 - 36" ELM. 90' RIGHT OF STA. 297+00 ELEV. 301.50
 B.M. No. 35 - CONCRETE FOUNDATION - STONE 70' RIGHT OF STA. 301+00

CONTRACTOR
A.B. Bislop
 BRIDGE ENGINEER

PITTSFORD MILLS BR.
 PITTSFORD
 F.A.P. 109-C
 SCALE 1" = 10' VERT.
 1" = 20' HORIZ.

SERIES F No. 109-A
 SHEET No. 23 of 192

SERIES F No. 109-C
 SHEET No. 3 of 17