

WOOD GUARD RAIL REQUIRED

CONVERT STA	LEFT	RIGHT
282+00	24'	24'
294+34	24'	24'

CABLE GUARD RAIL REQUIRED

STATIONS	LENG	CONSTANT	PAV LENGTH
280+10 - 281+12 RT	112'	20'	132'

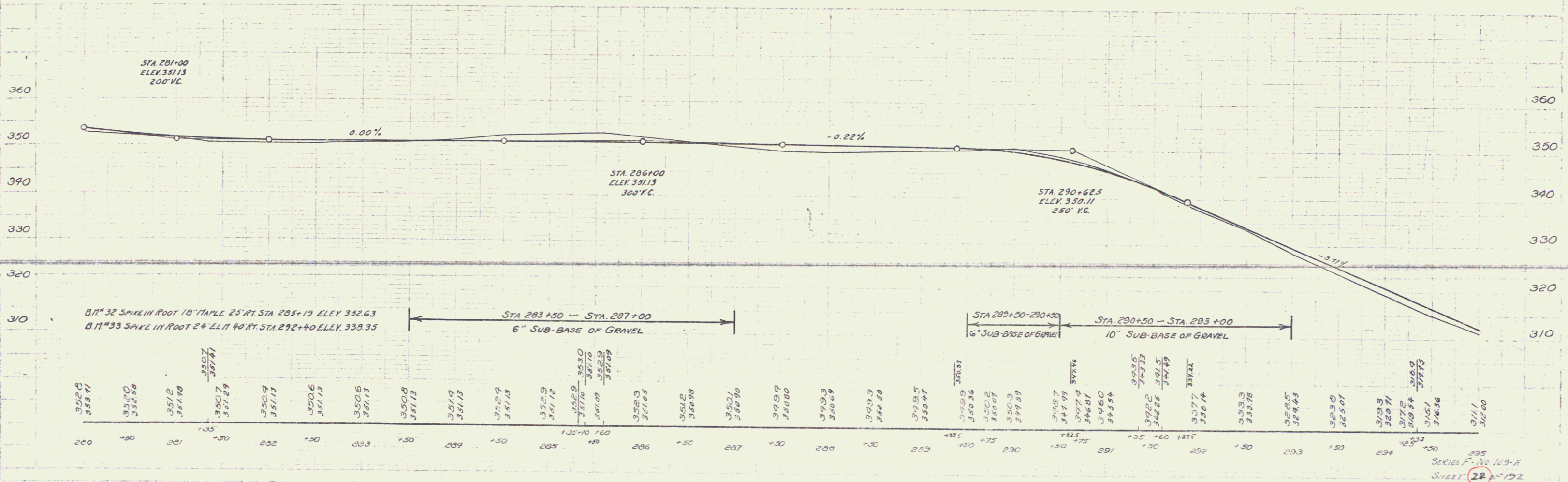
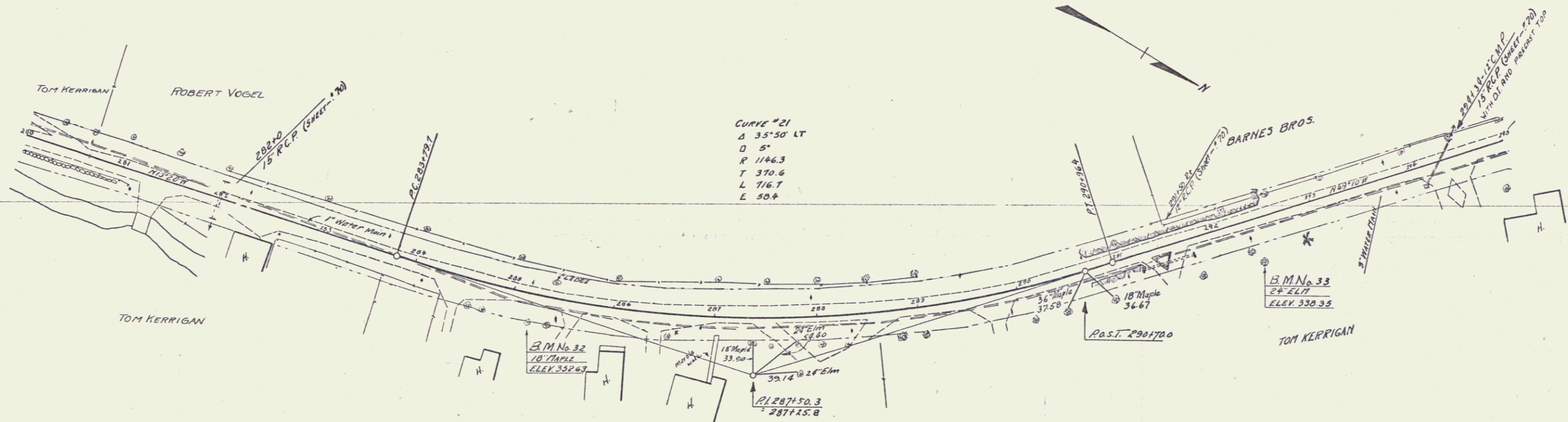
NEW PC/PI CONCRETE PIPE CULVERTS REQUIRED

STATION	DIAM	LENG	CONC	CONC	PC/PI	STEEL
282+00	18"	40'	2.34y	33.14y		
294+34	15"	52'	1.24y	17.41y		

DRIVEWAY PIPE CULVERTS REQUIRED

STATION	DIAM	LENG	CEMENT	PIPE	MOOREY
291+50 R	12"	52'	2.34y		

109A 1931 22 192



Station	Elevation
280+00	353.71
280+10	352.58
280+20	351.78
280+30	350.74
280+40	350.29
280+50	350.09
280+60	350.13
280+70	350.13
280+80	350.13
280+90	350.13
281+00	350.13
281+10	350.13
281+20	350.13
281+30	350.13
281+40	350.13
281+50	350.13
281+60	350.13
281+70	350.13
281+80	350.13
281+90	350.13
282+00	350.13
282+10	350.13
282+20	350.13
282+30	350.13
282+40	350.13
282+50	350.13
282+60	350.13
282+70	350.13
282+80	350.13
282+90	350.13
283+00	350.13
283+10	350.13
283+20	350.13
283+30	350.13
283+40	350.13
283+50	350.13
283+60	350.13
283+70	350.13
283+80	350.13
283+90	350.13
284+00	350.13
284+10	350.13
284+20	350.13
284+30	350.13
284+40	350.13
284+50	350.13
284+60	350.13
284+70	350.13
284+80	350.13
284+90	350.13
285+00	350.13
285+10	350.13
285+20	350.13
285+30	350.13
285+40	350.13
285+50	350.13
285+60	350.13
285+70	350.13
285+80	350.13
285+90	350.13
286+00	350.13
286+10	350.13
286+20	350.13
286+30	350.13
286+40	350.13
286+50	350.13
286+60	350.13
286+70	350.13
286+80	350.13
286+90	350.13
287+00	350.13
287+10	350.13
287+20	350.13
287+30	350.13
287+40	350.13
287+50	350.13
287+60	350.13
287+70	350.13
287+80	350.13
287+90	350.13
288+00	350.13
288+10	350.13
288+20	350.13
288+30	350.13
288+40	350.13
288+50	350.13
288+60	350.13
288+70	350.13
288+80	350.13
288+90	350.13
289+00	350.13
289+10	350.13
289+20	350.13
289+30	350.13
289+40	350.13
289+50	350.13
289+60	350.13
289+70	350.13
289+80	350.13
289+90	350.13
290+00	350.13
290+10	350.13
290+20	350.13
290+30	350.13
290+40	350.13
290+50	350.13
290+60	350.13
290+70	350.13
290+80	350.13
290+90	350.13
291+00	350.13
291+10	350.13
291+20	350.13
291+30	350.13
291+40	350.13
291+50	350.13
291+60	350.13
291+70	350.13
291+80	350.13
291+90	350.13
292+00	350.13
292+10	350.13
292+20	350.13
292+30	350.13
292+40	350.13
292+50	350.13
292+60	350.13
292+70	350.13
292+80	350.13
292+90	350.13
293+00	350.13
293+10	350.13
293+20	350.13
293+30	350.13
293+40	350.13
293+50	350.13
293+60	350.13
293+70	350.13
293+80	350.13
293+90	350.13
294+00	350.13
294+10	350.13
294+20	350.13
294+30	350.13
294+40	350.13
294+50	350.13
294+60	350.13
294+70	350.13
294+80	350.13
294+90	350.13
295+00	350.13

SERIES F-109-A
SHEET 22 OF 192