

WOOD GUARD RAIL REQUIRED

CULVERT STA	LEFT	RIGHT
210+42	24'	24'
215+40	24'	24'

NEW REIN. CONCRETE PIPE CULVERT REQUIRED

STATION	DIAM.	LENG.	CONC.	CONC.	REIN. STEEL
210+42	24"	32'	3.0 cy	~	18# lbs.
215+40	36"	40'	4.0 cy	~	26 lbs.

See F-019-3(23)
1979

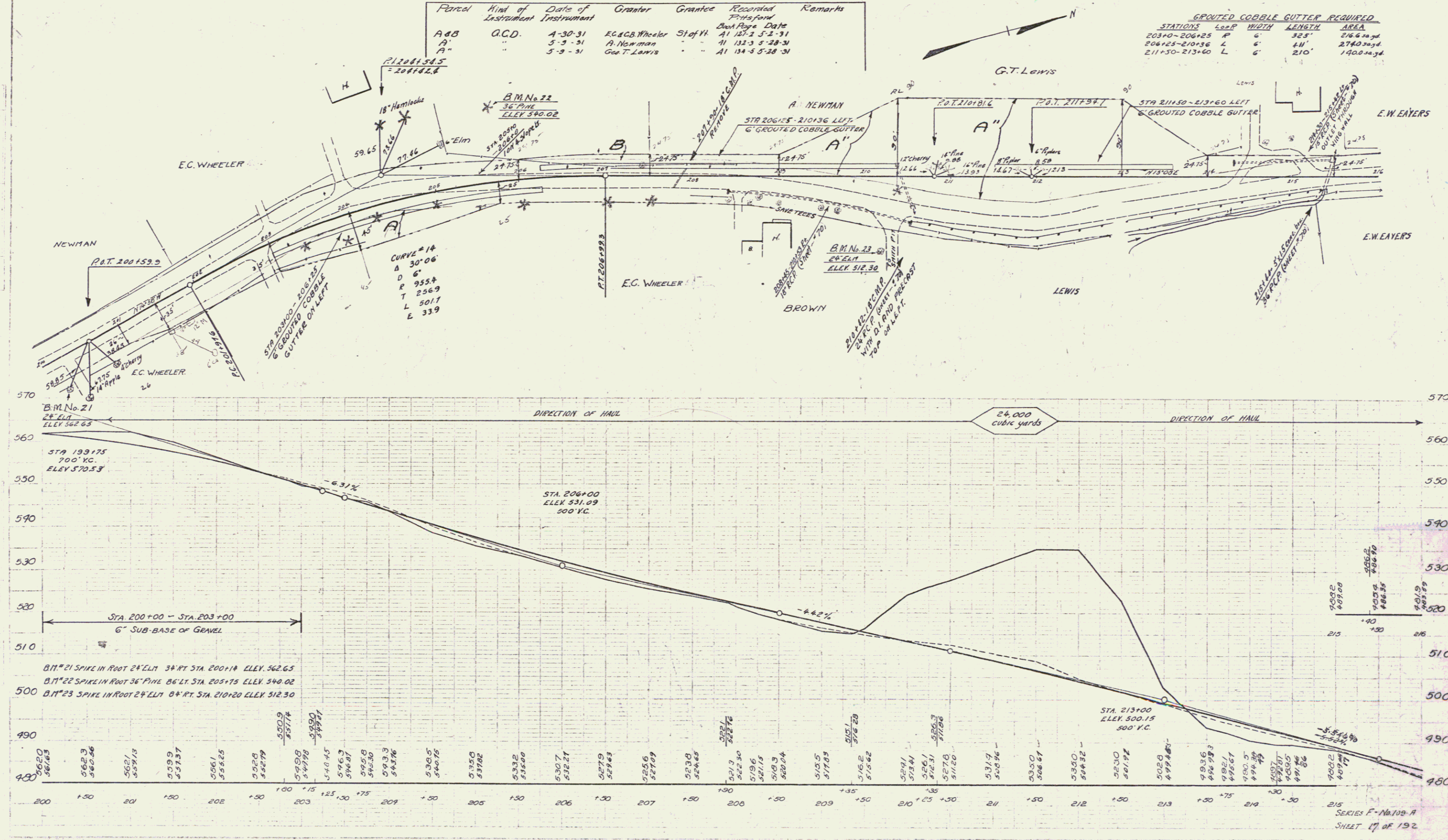
DRIVEWAY PIPE CULVERTS REQUIRED

STATION	LOAR	DIAM.	LENG.	CEMENT RUBBLE MASONRY
208+45-210+23	R	18"	200'	2.3 cubic yards
214+30-215+42	L	18"	112'	1.4 cubic yards

Parcel	Kind of Instrument	Date of Instrument	Grantor	Grantee	Recorded Platbook	Remarks
A & B	G.C.D.	4-30-31	E.C. & G.B. Wheeler	Stof. H.	A1 127-2 5-2-31	
A"	"	5-3-31	A. Newman	"	A1 132-3 5-28-31	
A"	"	5-3-31	Geo. T. Lewis	"	A1 134-5 5-28-31	

GROUTED COBBLE GUTTER REQUIRED

STATIONS	LEAF	WIDTH	LENGTH	AREA
203+0-206+25	R	6"	324'	216 sq. yd.
206+25-210+36	L	6"	411'	274.0 sq. yd.
211+50-213+60	L	6"	210'	140.0 sq. yd.



C.E. Newman

C.E. Newman