

WOOD GUARD RAIL REQUIRED

CULVERT STATION	ELEV. ROAD	ELEV. RAIL
99+05	24'	24'
99+12	24'	24'
99+26	24'	24'

NEW REIN. CONCRETE PIPE CULVERTS REQUIRED

STATION	DIAM.	LEN.	CONC.	CONG'S	REIN. STEEL
99+05	15"	40'	~	23y	3316x
99+12	15"	56'	~	23y	3316x

NEW REIN. CONCRETE BOX CULVERTS REQUIRED

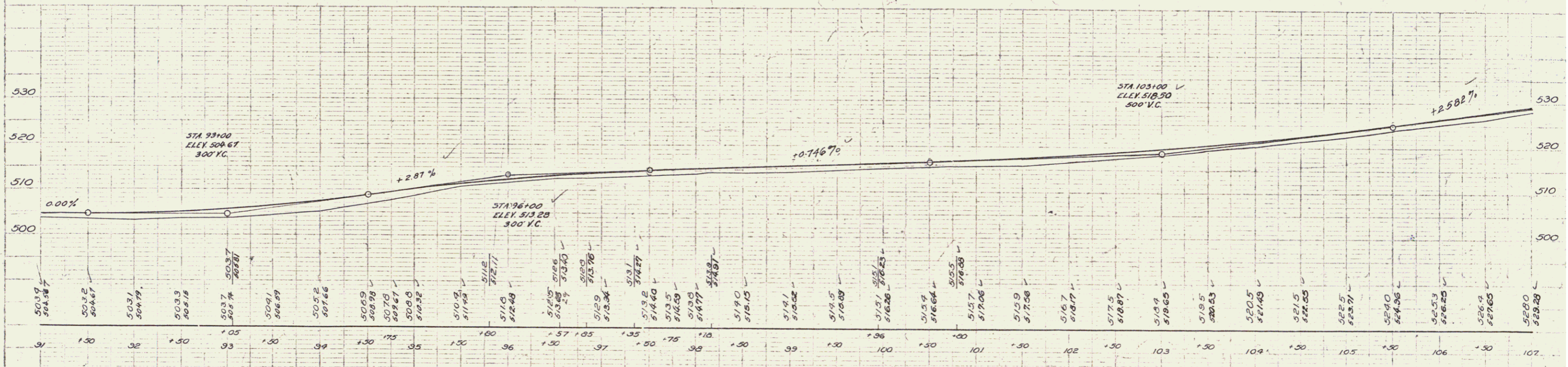
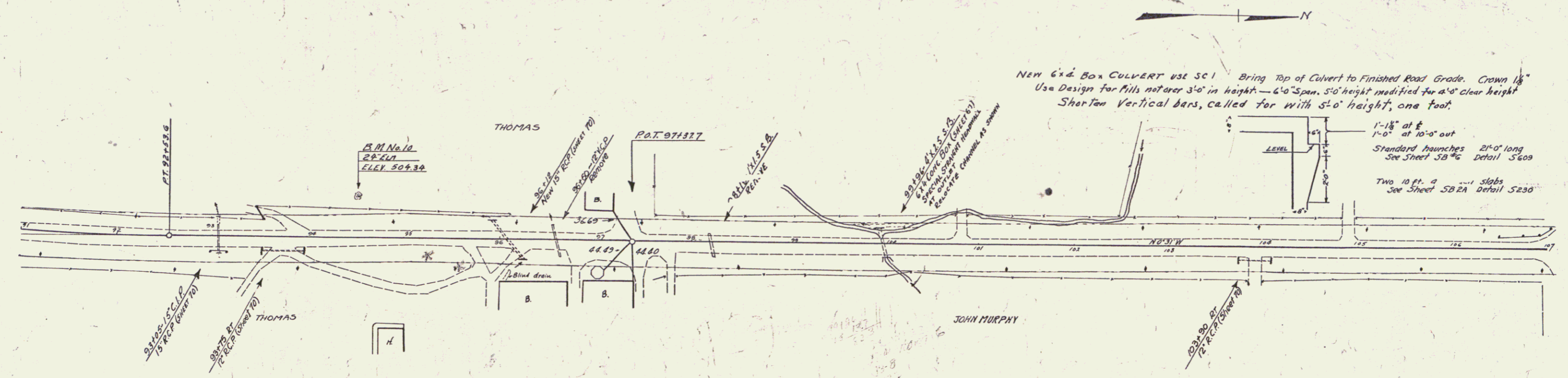
STATION	SIZE	CONC.	REIN. STEEL	INCL. APPROACH SLAB
99+26	6'x4'	50.7	3666"	ONE CRACK CEMENT CONCRETE PAVEMENT

Pavement for Approach Slabs 156 cu. y.

DRIVEWAY PIPE CULVERTS REQUIRED

STATION	LEN.	DIAM.	CONC.	REIN. STEEL	LETTING RUBBLE MASONRY
99+26	4'	12"	40'	23 cubic yards	23 cubic yards
103+20	4'	12"	32'	23 cubic yards	23 cubic yards

ED. HIND STATE LED 400 FEDERAL STREET
 100-A 1001 10 192



B.M. #10 SPIKE IN ROOT 24' ELEV. 504.34 STA 99+52 ELEV. 504.34

GRADE REVISION 6-1-51
 D.P.R. P.I. 316 103+0 500' V.C. ELEV. 517.67
 ELEV. P.I. 316 103+0 500' V.C. ELEV. 518.50

SERIES F-100-A
 SHEET 10 OF 192

7