

INDEX OF SHEETS

SHEET NO.	TITLE PAGE
1	TITLE PAGE
2	TYPICAL CROSS-SECTIONS OF IMPROVEMENT (BITUMINOUS CONCRETE PAVEMENT, ITEM 361-B MOD.)
3-4	ITEM QUANTITY SHEETS
5	ITEM DRAINAGE SHEET
6-7	EARTHWORK SHEETS (HWY)
8	EARTHWORK SHEET (CHANNEL)
9-14	PLAN AND PROFILE SHEETS
15	GENERAL PLAN (BRIDGE)
16	PRELIMINARY INFORMATION SHEET (BRIDGE)
17	ABUTMENT PLAN AND PYLON DETAILS
18	PIER DETAILS
19	FRAMING AND DECK PLANS
20	REINFORCING SCHEDULE
21	BRIDGE STANDARD SHEET SCB-30-60
22	BRIDGE STANDARD SHEET SCB-D-60
23	BRIDGE STANDARD SHEET SB-50-60 SHEET 1 OF 2 - CURB AND ALUM. RAILING DETAILS
24	BRIDGE STANDARD SHEET SB-50-60 SHEET 2 OF 2 - ALT. GALV. METAL RAILING DETAILS
25	BRIDGE STANDARD SHEET SB-20-60, DETAILS B, C, E, F OR G, H & K.
26	BRIDGE STANDARD SHEET SB-22-60, ENTIRE SHEET (EXPANSION JOINTS OVER PIERS)
27	BRIDGE STANDARD SHEET SB-AS-50, SKETCH PLAN 30' RDWY, VIEW A-A & DETAILS (APPROACH SLABS)
28	ROADWAY STANDARD SHEET A-61 DRILLING AND BLASTING OF SOLID ROCK SUBGRADE
29	ROADWAY STANDARD SHEET B-1 BANKING TABLES
30	ROADWAY STANDARD SHEET B-5 TYPICAL SLOPE GRADING
31	ROADWAY STANDARD SHEET B-16 DIVISIONAL ISLAND DESIGN
32	ROADWAY STANDARD SHEET C-1 CURBING
33	ROADWAY STANDARD SHEET D-1 PRECAST REINFORCED CONC. PIPE DROP INLETS
34	ROADWAY STANDARD SHEET D-2 CEMENT RUBBLE MASONRY
35	ROADWAY STANDARD SHEET D-3 GUTTERS
36	ROADWAY STANDARD SHEET D-4 FLUSHING BASINS
37	ROADWAY STANDARD SHEET E-1 BARRICADES, SIGNS AND LIGHTS (ROADWAY)
38	ROADWAY STANDARD SHEET G-3 THREE CABLE GUARD RAIL WITH STEEL POSTS
38-A	ROADWAY STANDARD SHEET G-4 MARKERS (WOOD & STEEL)
38-B	ROADWAY STANDARD SHEET J-1 MARKERS (PROJECT AND BOUNDARY)
39-40	GROSS SECTIONS
40-49	CHANNEL SECTIONS
27-A & 27-B	R.C.C.P. - 8-62 STA. 1331+50
27-C	R.C.C.P. - 8-62 STA. 1354+25
37-A	BRIDGE STANDARD SHEET D-8
36-A	ROADWAY STANDARD SHEET D-8
36-B	ROADWAY STANDARD SHEET D-11

REINFORCED CONCRETE DROP INLETS  
DETAILS OF GRATES & COVERS FOR DROP INLETS

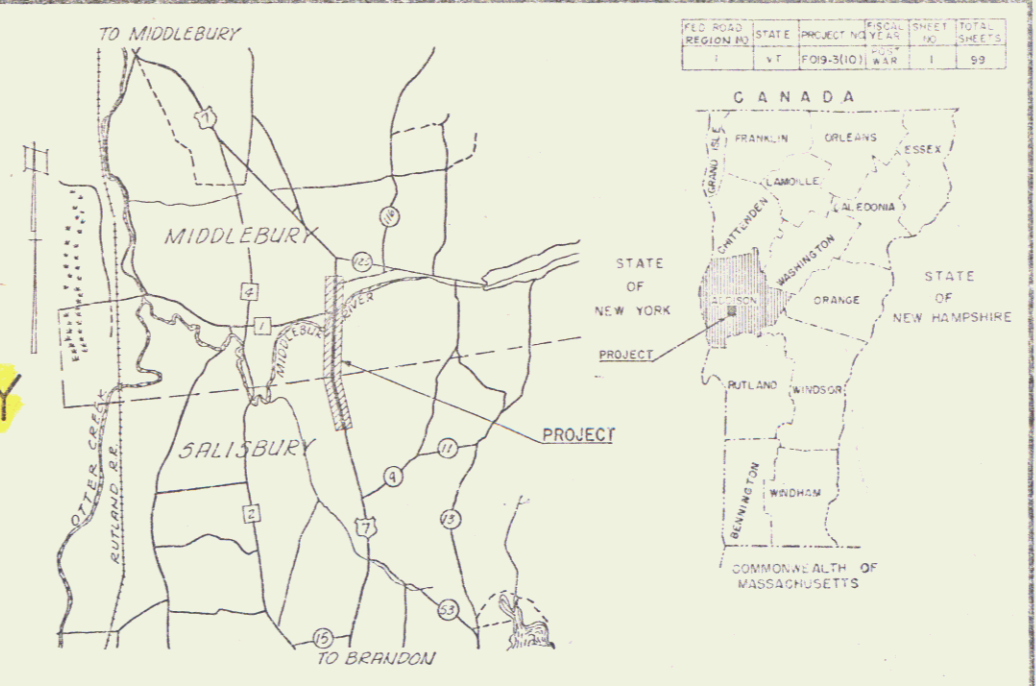
STATE OF VERMONT  
DEPARTMENT OF HIGHWAYS  
PROPOSED IMPROVEMENT

TOWNS OF SALISBURY AND MIDDLEBURY  
COUNTY OF ADDISON  
U.S. ROUTE 7  
BRANDON - MIDDLEBURY ROAD

BEGINNING AT A POINT IN THE TOWN OF SALISBURY 3.964 MILES NORTHERLY OF THE LEICESTER - SALISBURY TOWN LINE AND EXTENDING NORTHERLY 1.610 MILES, INCLUDING BRIDGE.

LENGTH OF ROADWAY 8,298.70 FEET = 1.572 MILES  
LENGTH OF BRIDGE 202.00 FEET = 0.038 MILES  
LENGTH OF PROJECT 8,500.70 FEET = 1.610 MILES

DESIGN DESIGNATION	VELOCITY
AGT (1955)	2400'
AGT (1975)	4100'
DHV (1975)	570'
D	55 %
T	8 %
V	60 MPH



PROJECT NAME & NUMBER TYPE PAVEMENT AREA  
SALISBURY-MIDDLEBURY F019-31(0) BIT. CONC. PAV'T. 22,669 S.Y.

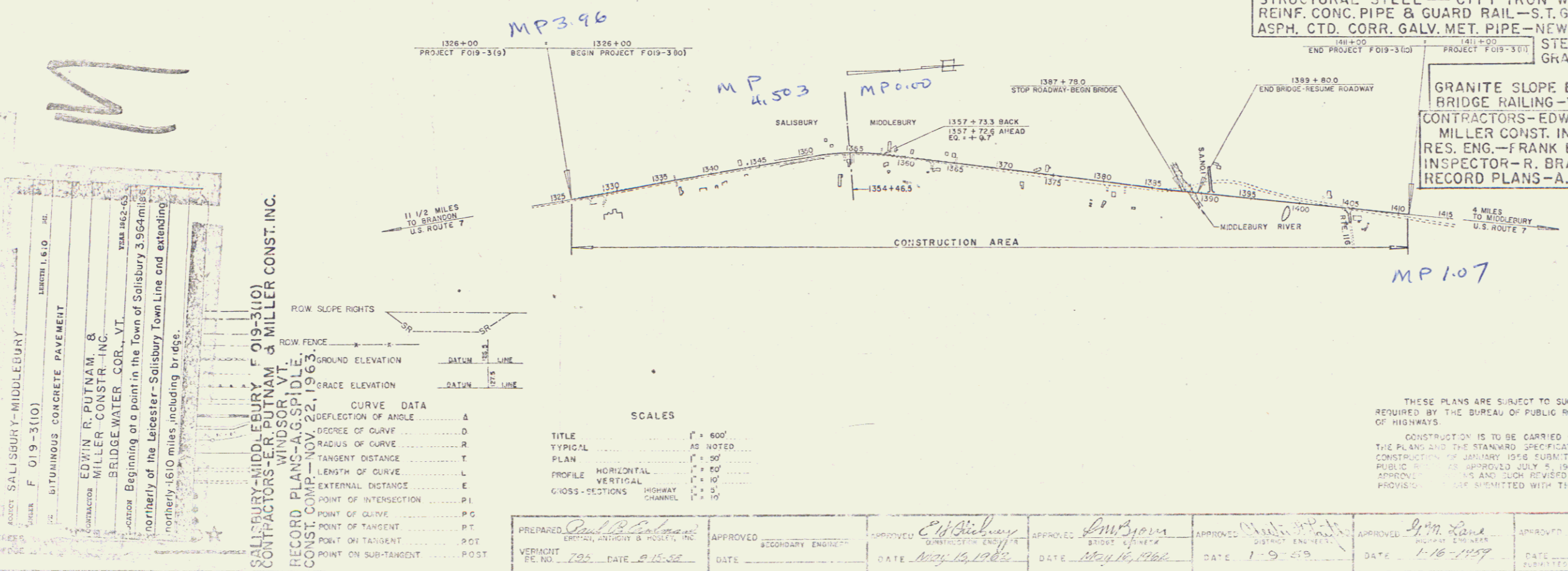
RECORD PLANS

MATERIALS

SUBBASE OF GRAVEL - FOSTER PIT - MIDDLEBURY, VERMONT.  
SUBBASE OF SAND - WHITNEY PIT - SALISBURY, VERMONT.  
CRUSHED GRAVEL PLANT MIXED BASE COURSE & BITUMINOUS CONCRETE - L.M. PIKE & SON INC. (PLANT) - FLORENCE, VERMONT.  
GRAVEL SHOULDERS, SAND, PEASTONE & CONCRETE CLASS "B" - JOSEPH P. CARRARA & SONS INC. - EAST MIDDLEBURY, VERMONT.  
REFINED TAR - WITCO CHEMICAL CO. - WORCESTER, MASS.  
TAR EMULSION - BORDEN CHEMICAL CO. - NEW YORK CITY, N.Y.  
ASPHALT - MOBIL OIL CO. - EAST PROVIDENCE, R.I.  
STONE GRITS - VERMONT MARBLE CO. - FLORENCE, VERMONT.  
REINFORCING STEEL - REPUBLIC STEEL CORP. - YOUNGSTOWN, OHIO.  
STRUCTURAL STEEL - CITY IRON WORKS - WEATHERSFIELD, CONN.  
REINF. CONC. PIPE & GUARD RAIL - S.T. GRISWOLD & CO. INC. - WILLISTON, VERMONT.  
ASPH. CTD. CORR. GALV. MET. PIPE - NEW ENGLAND METAL PIPE CO. - WHITE RIVER JCT., VT.  
STEEL PILING - BETHLEHEM STEEL CO. - BETHLEHEM, PA.  
GRANITE BRIDGE CURB - BARRETT GRANITE CORP. - MILFORD, N.H.  
GRANITE SLOPE EDGING - E.L. SMITH QUARRY - BARRE, VERMONT.  
BRIDGE RAILING - WARD-WELLER CORP. - NEWTON LOWER FALLS, MASS.

CONTRACTOR: EDWIN R. PUTNAM & MILLER CONST. INC. - WINDSOR, VT.  
RES. ENG. - FRANK E. ALDRICH.  
INSPECTOR - R. BRADY.  
RECORD PLANS - A.G. SPIDLE.

CONTRACT DATED - DECEMBER 3, 1962.  
STARTED - DECEMBER 12, 1962.  
COMPLETED & ACCEPTED - NOVEMBER 22, 1963.



RIGHT-OF-WAY DIVISION  
TOWN FILE  
PERPETUAL  
Town of U.S.7  
(To Be Returned to R.O.W. Division)  
Pin # 99R467

Rev Curve  
 $\Delta = 2^{\circ}47'30''$  RT  
 $D = 0^{\circ}20'$   
 $R = 12,188.7$   
 $T = 418.8$   
 $L = 837.5$   
 $E = 5.1$   
 De Not Bank

Survey D1 1310+03.0 =  
 1310+02.0  
 $\Delta = 2^{\circ}47'30''$  RT  
 $D = 0^{\circ}20'$   
 $T = 274.2$

Dev P1 1320+05.7 =  
 1320+05.6

CONSTRUCT DRIVES  
 1327+72 RT  
 1329+23 RT  
 1329+50 LT

#18 B HOWARD A & BEATRICE K. FOSTER  
 (A 3.5 2) STA 1309+40 - 1338+77 RT  
 CULVERT RIGHTS STA 1313+00, 1331+60 ±  
 TITLE TAKEN: COND. 11/20/59  
 RECORDED: SALISBURY - BK 24 - PG 229-11/24/59

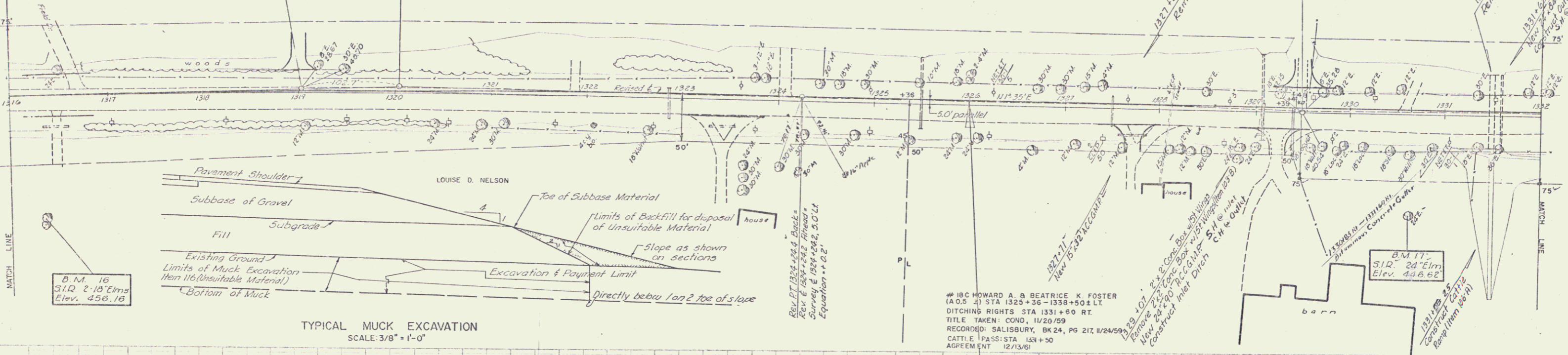
SEEDING - ITEM 611  
 Topsoil Item 621  
 Comm Fertilizer for Grasses, Item 615  
 1327+75 - 1329+15 RT

THREE CABLE GUARD RAIL  
 WITH STEEL POSTS, ITEM 543  
 1329+05 - 1331+50 RT  
 1330+35 - 1331+40 RT  
 1330+05 - 1331+64 RT

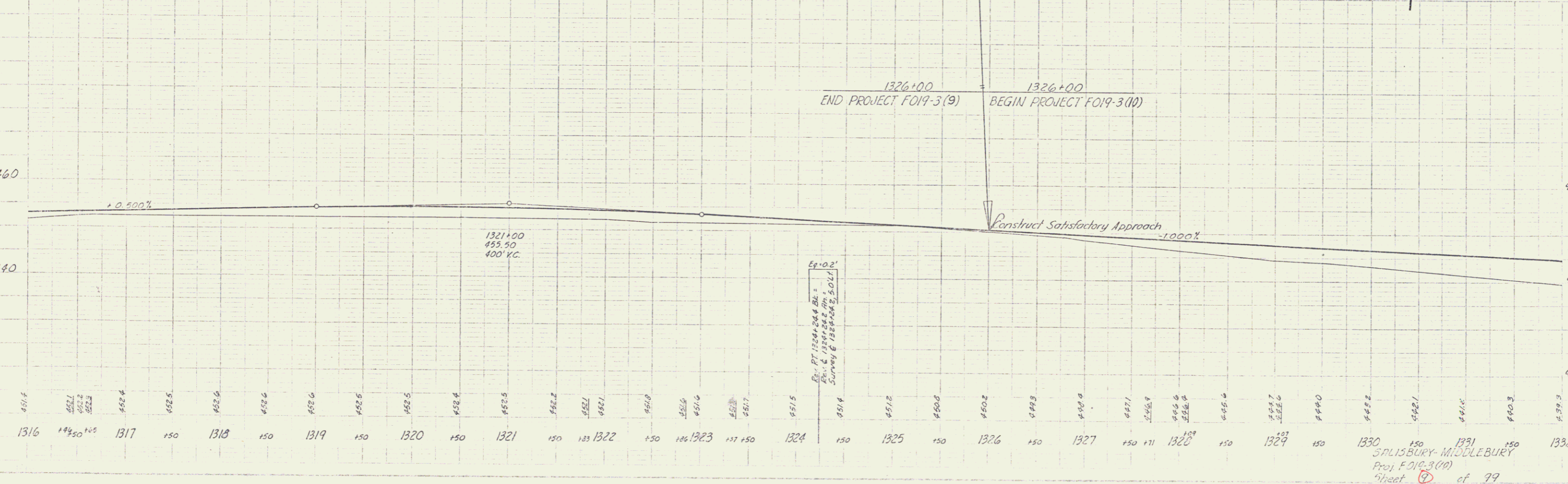
500 REMOVAL  
 1326+00 - 1331+50  
 Item 101-A

PAVEMENT REMOVAL  
 1328+25 - 1331+50  
 Item 101-A

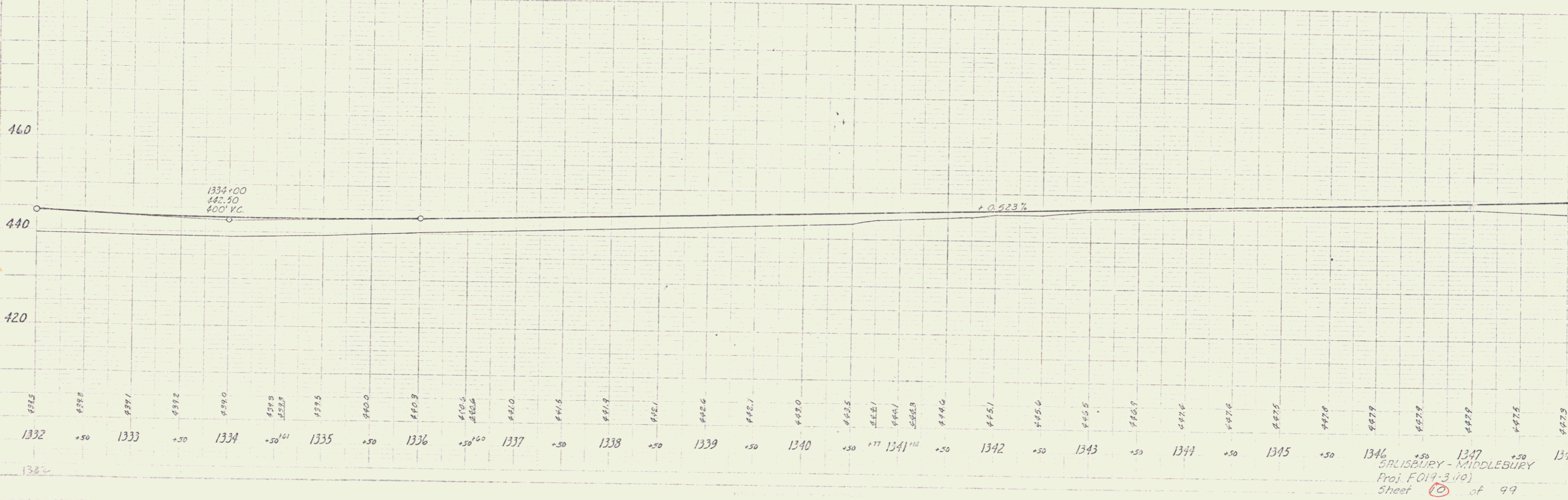
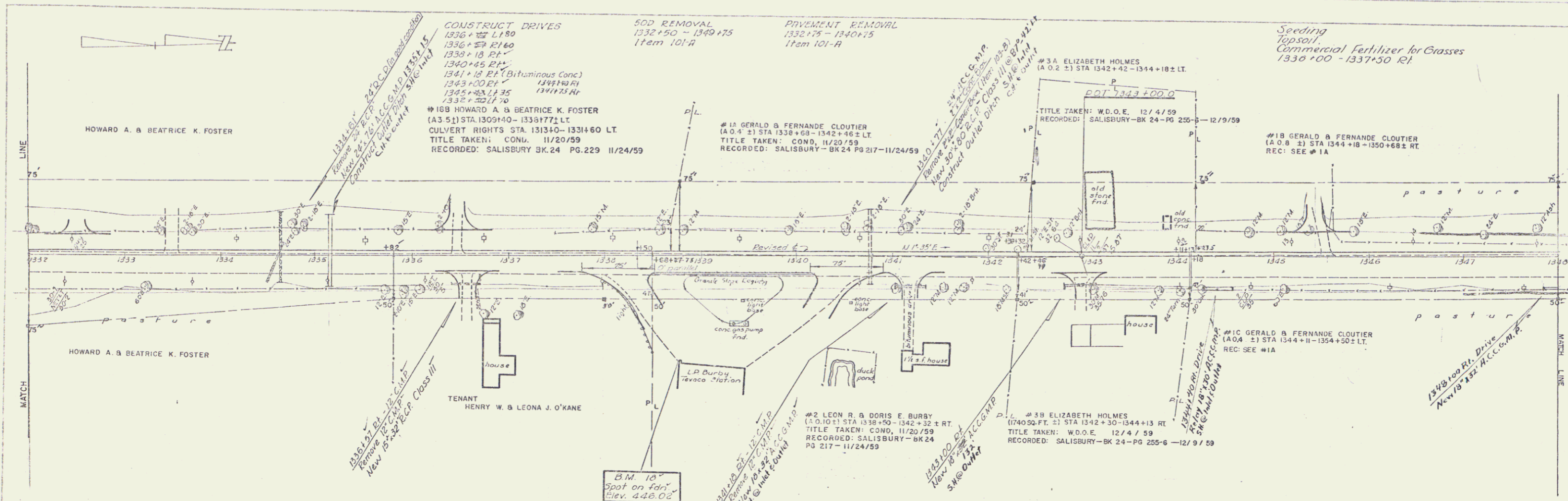
MATCH LINE



TYPICAL MUCK EXCAVATION  
 SCALE: 3/8" = 1'-0"

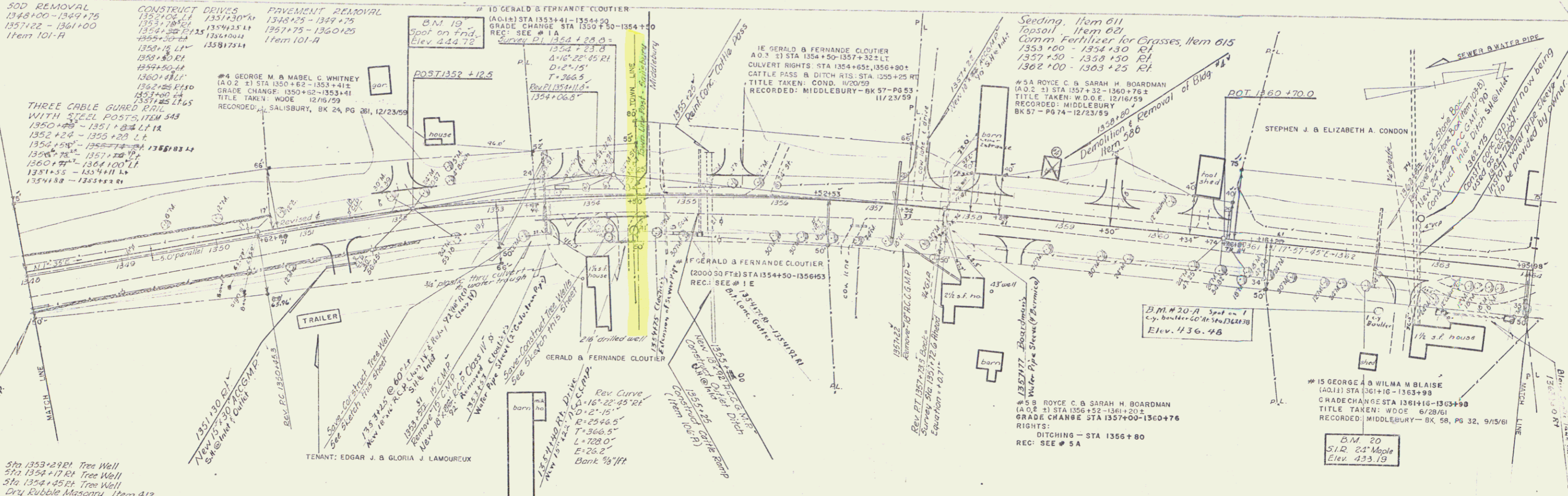


SALISBURY-MIDDLEBURY  
 Proj F 019-3(10)  
 Sheet 79 of 99

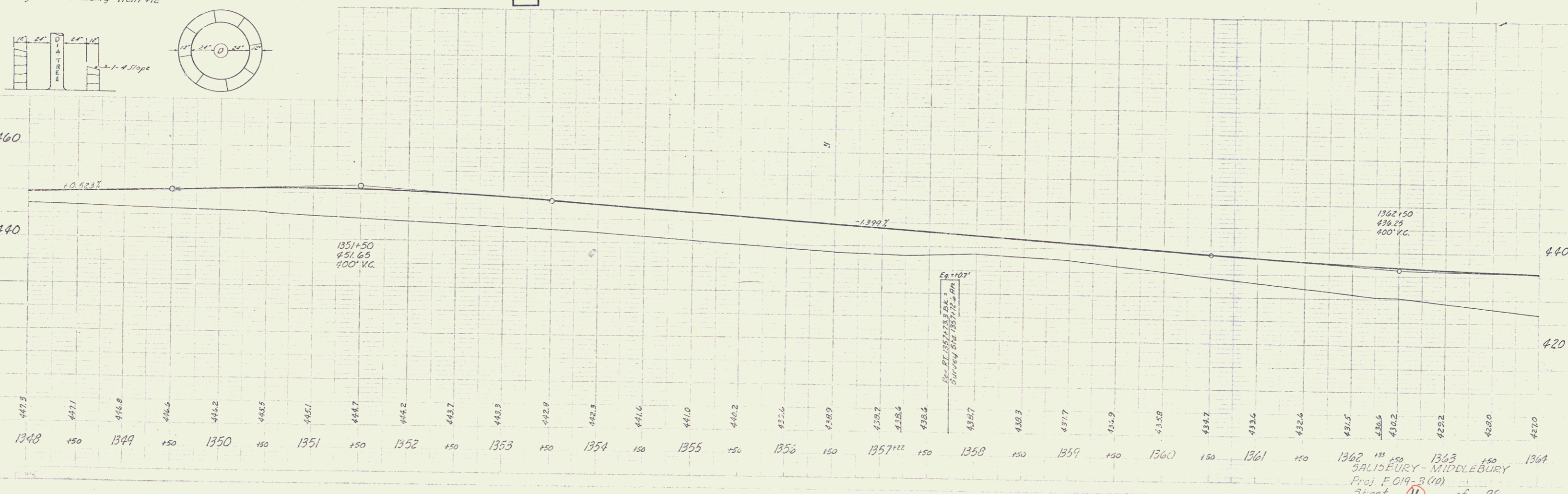


Asst. E. Drawn  
 4-30  
 8-56  
 M.G.  
 TRACED

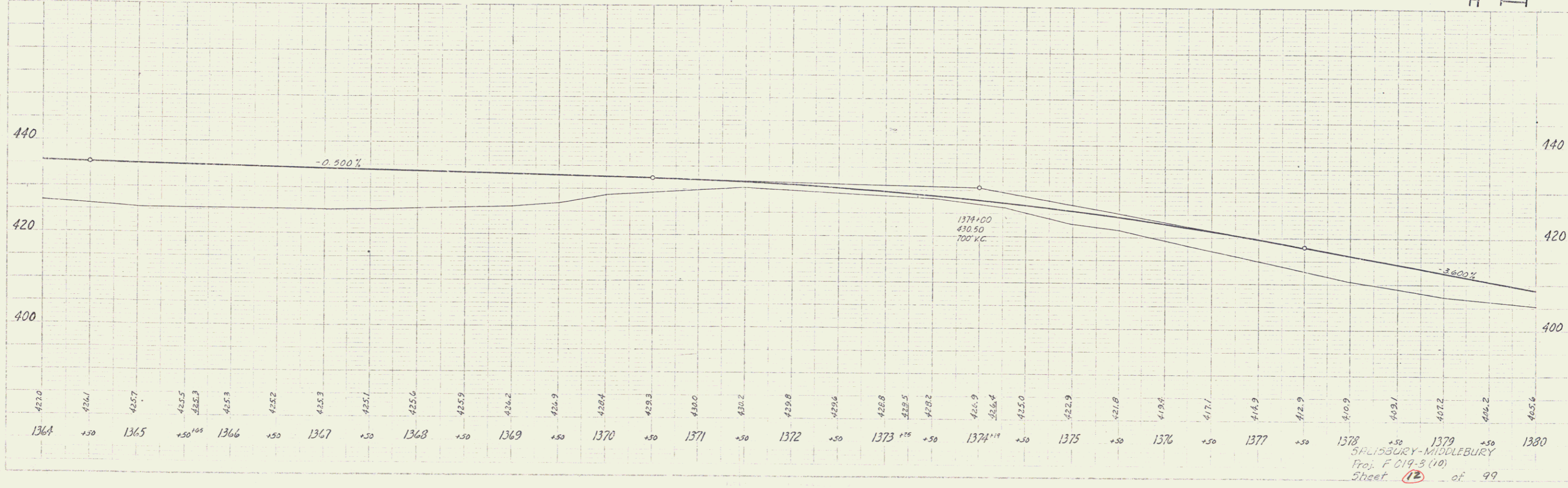
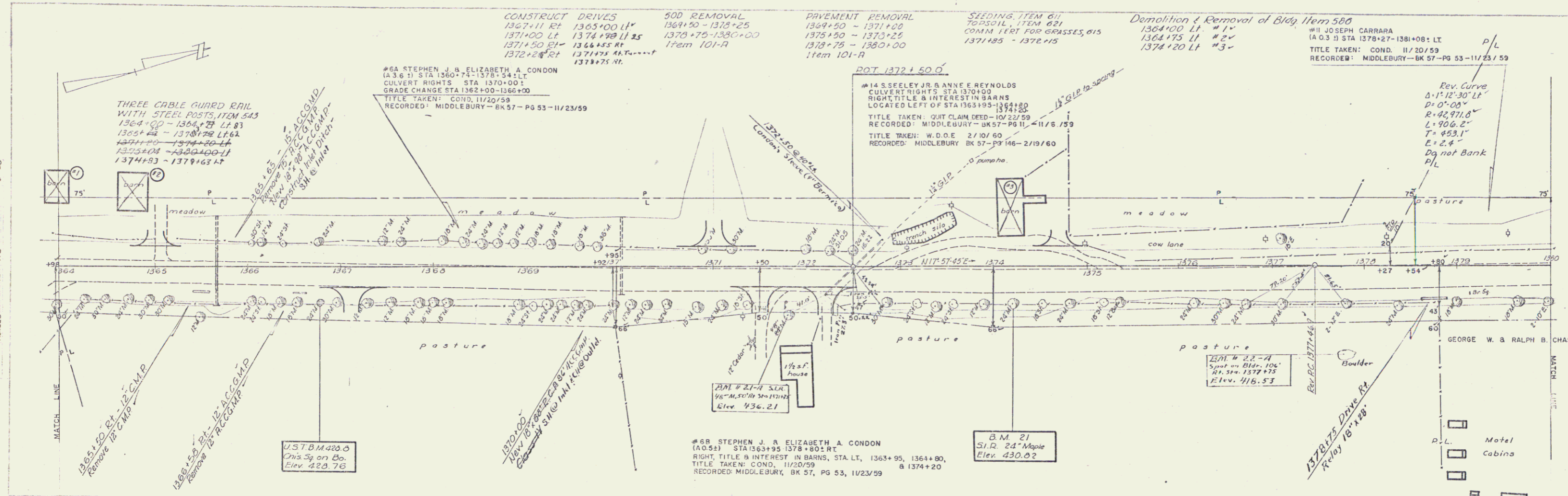
PROF. DRAWN  
 4-30  
 8-56  
 M.G.



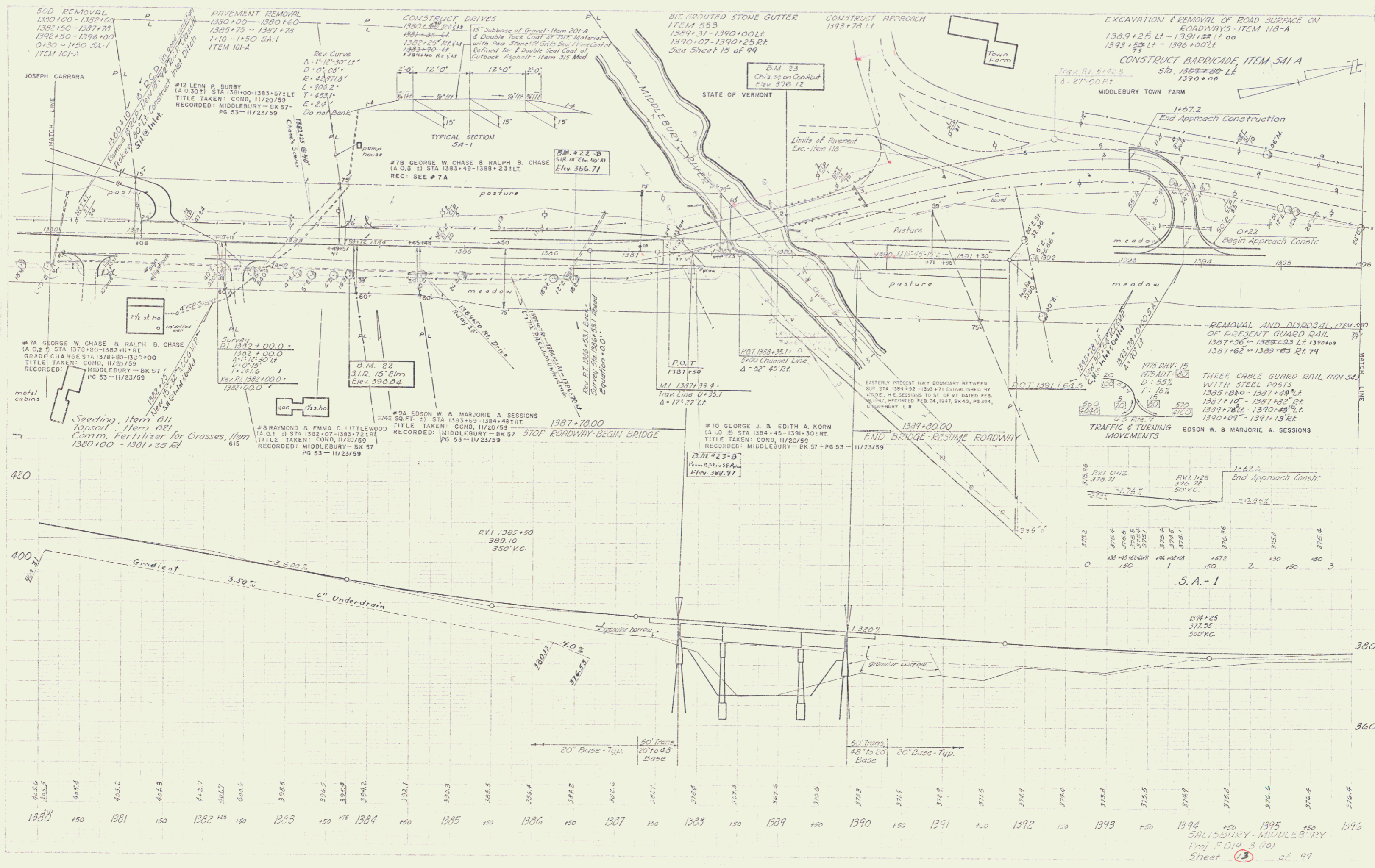
11-57  
Palmer  
Hand & Drawn  
2-56



12-52  
2-56  
WCU  
5-58  
Traced

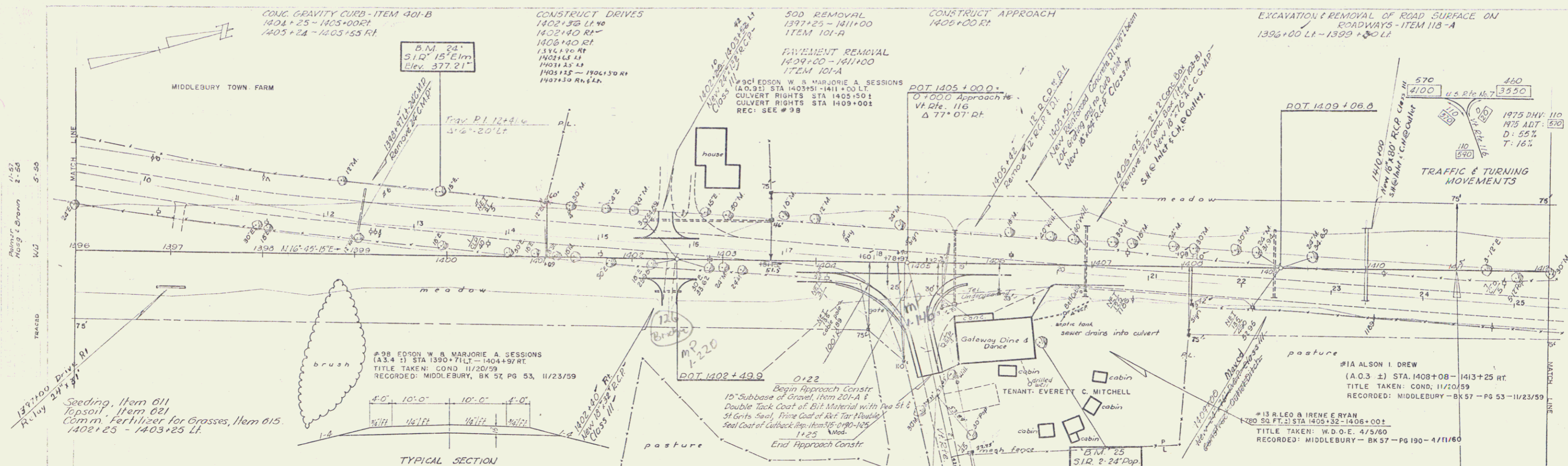


5

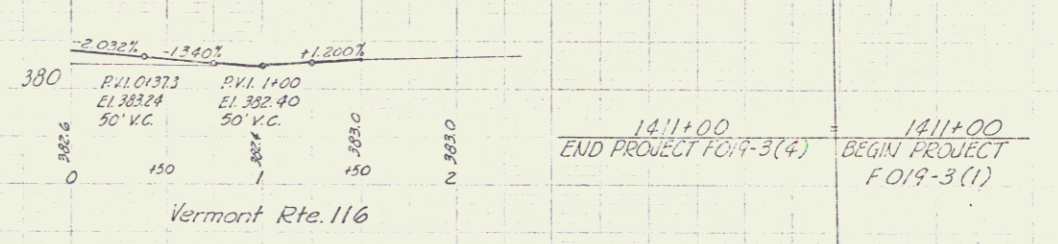
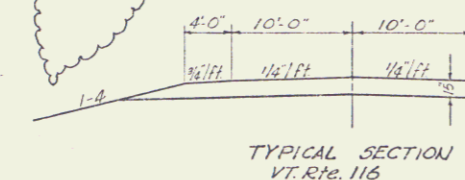


SALISBURY - MIDDLEBURY  
 Proj. F. 014 - 3 (10)  
 Sheet 3 of 97

6

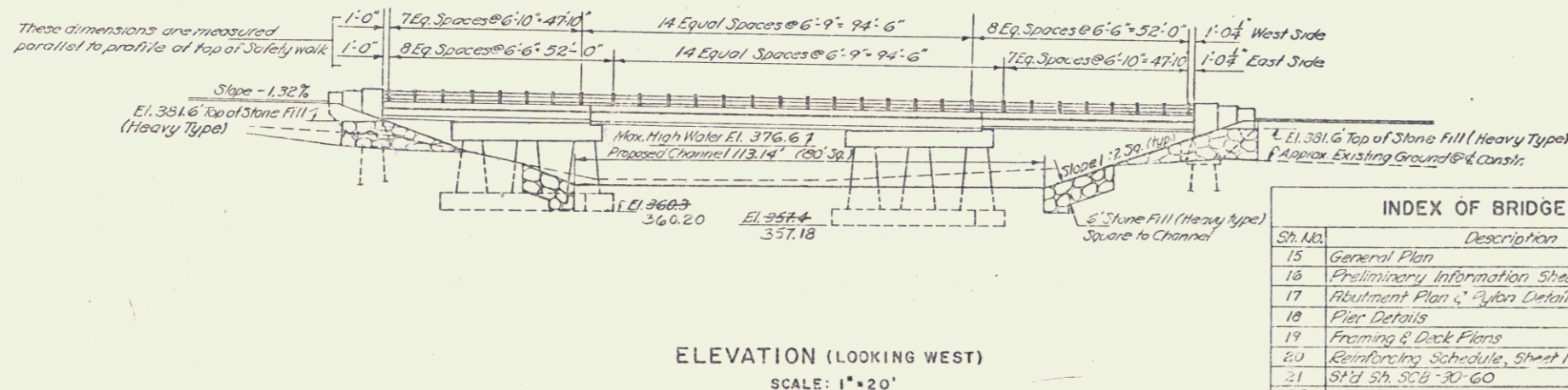
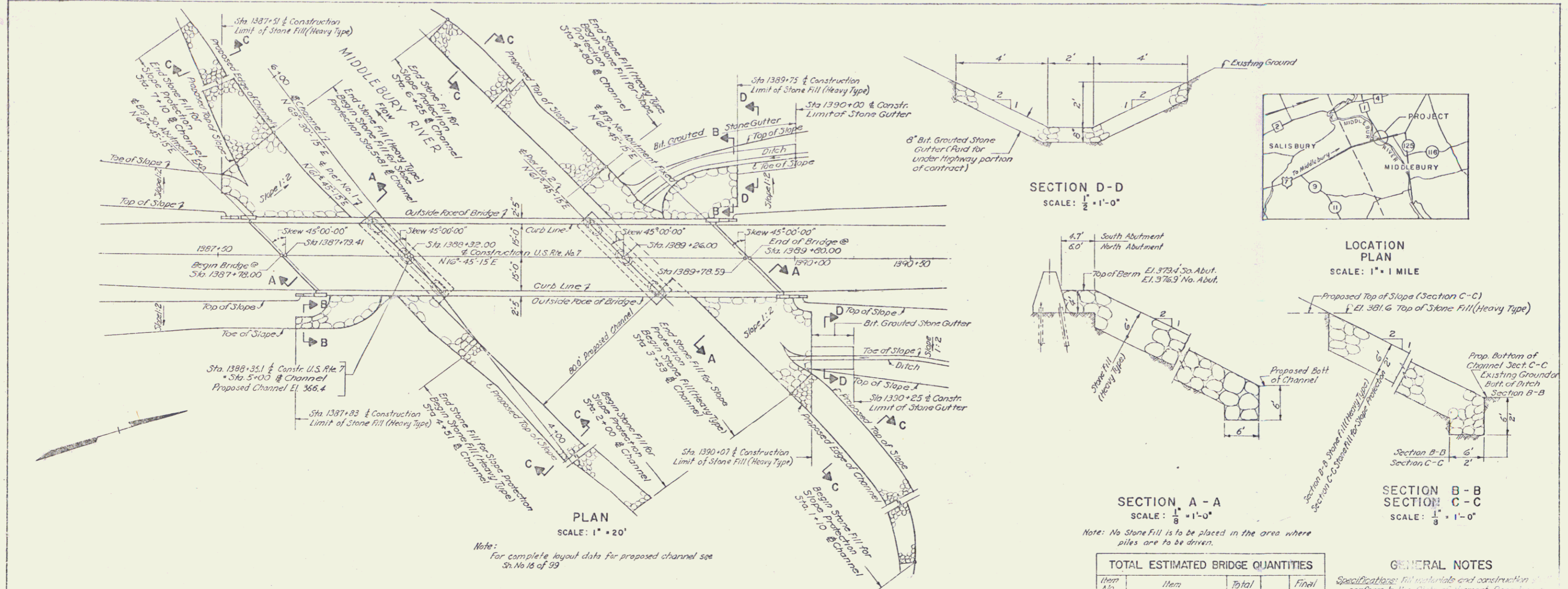


Seeding, Item 611  
Topsoil, Item 621  
Comm. Fertilizer for Grasses, Item 615  
1402+25 - 1403+25 LF.



1396	1397	1398	1399	1400	1401	1402	1403	1404	1405	1406	1407	1408	1409	1410	1411	1412
------	------	------	------	------	------	------	------	------	------	------	------	------	------	------	------	------

1411+00  
END PROJECT FO19-3(4)  
1411+00  
BEGIN PROJECT FO19-3(1)  
SALISBURY - MIDDLEBURY  
Proj. F O19-3(00)  
Sheet 14 of 99



**INDEX OF BRIDGE SHEETS**

Sh. No.	Description
15	General Plan
16	Provisionary Information Sheet
17	Abutment Plan & Detail
18	Pier Details
19	Framing & Deck Plans
20	Reinforcing Schedule, Sheet 1 of 1
21	SPY Sh. 50-B-30-60
22	" " SCB-D-60
23	" " SB-60-60 Sh 1 of 2 - Curb & Alum. Railing Details
24	" " " " Sh 2 of 2 - Fill, Coll. Metal Railing Details
25	" " SB-20-60 Details B, C, E, F or G, H, K
26	" " SB-22-60 entire sheet
27	" " SB-15-60 Sh 1 of 2 - Plan 30 Rev. View P.A.B. Details
90-99	Channel Cross Sections

**TOTAL ESTIMATED BRIDGE QUANTITIES**

Item No.	Item	Total	Final
106-C	Unclassified Channel Excavation	4944.73	6102
107	Structure Excavation	3820.00	350
201-A	Sub-Base of Gavel, Mod.	44.00	40
301-B	Bituminous Concrete Pavement	101.00	*
401-B	Concrete Class 3-Med	732 c.y.	742
402	Reinforcing Steel	29550 lbs	80194
403	Spiral Reinforcement (3620 lbs)	11.51	1
404-41	Structural Steel	273500 lbs	260117
407	Asphaltic-Fiberglass Coating	72 sq. yds	62
441	Temporary Bridge	1 L.S.V.	1
442	Removal of Present Superstructure	1 L.S.V.	1
501	Furnishing Equipment for Driving Piles	1 L.S.V.	1
504	Steel Piling	6024.8	672
521	Stone Fill (Heavy Type)	1661.00	1970
522	Stone Fill for Slope Protection	244 c.y.	243
556-C	Concrete Bridge Curb	447.00	440
572	Bridge Railing	325 L.F.	313
503	Splices for Steel Piling	6.00	5
572-C	Joint Sealer - Performed	170 L.F.	*
*	Install Heavy Guard		*

**GENERAL NOTES**

Specifications for materials and construction conform to the State of Vermont, Department of Highways, Standard Specifications for Highway and Bridge Construction, dated Jan. 1952. Design according to the specifications of the A.S.H.T.O. 1957 with military loading and as modified by the State of Vermont, Department of Highways.

Design Loads: H 20-S16 (AA)  
Design Stresses:  $f_c = 18,000$  psi (structural steel)  
 $f_s = 20,000$  psi (reinforcing steel)  
 $f_t = 1,200$  psi  
 $f_v = 3,000$  psi

**STATE OF VERMONT**  
**DEPARTMENT OF HIGHWAYS**

TOWNS OF SALISBURY - MIDDLEBURY  
Route No. U.S. #7 Log Sta. \_\_\_\_\_  
General Plan

EPDMAN, ANTHONY & HOSLEY INC.  
19 CARRIDGE ST. BOSTON 14, MASS.

SURVEYED BY: [Signature] CHECKED BY: [Signature] SCALE: AS SHOWN  
DRAWN BY: [Signature] IN CHARGE: [Signature] DATE: Oct. 15, 1958

PROJECT NO. FS-379 SHEET 15 OF 27