

Rev Curve
 $\Delta = 2^{\circ}47'30''$ RT
 $D = 0^{\circ}20'$
 $R = 17,188.7$
 $T = 418.8$
 $L = 837.5$
 $E = 5.1$
 De Not Bank

Survey D1 1310+03.0 =
 1310+02.0
 $\Delta = 2^{\circ}47'30''$ RT
 $D = 0^{\circ}20'$
 $T = 274.2$

CONSTRUCT DRIVES
 1327+75 RT
 1329+25 RT
 1329+50 LT

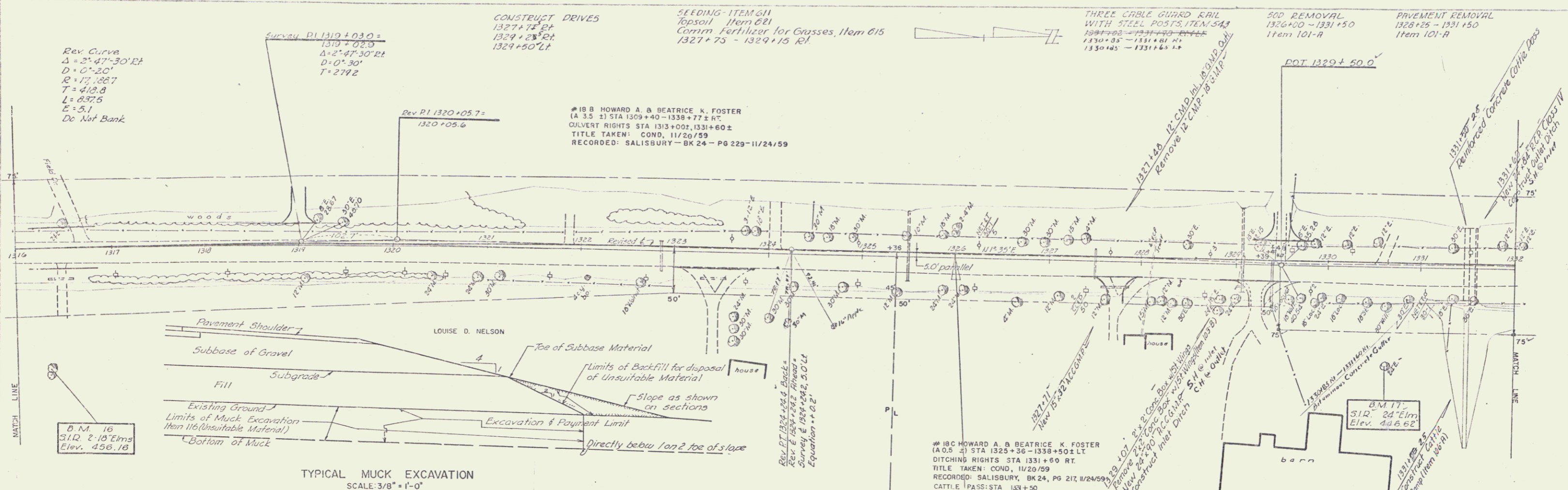
SEEDING - ITEM G11
 Topsoil Item 021
 Comm Fertilizer for Grasses, Item 015
 1327+75 - 1329+15 RT

THREE CABLE GUARD RAIL
 WITH STEEL POSTS, ITEM 543
 1327+05 - 1331+50 RT
 1330+35 - 1331+40 RT
 1330+05 - 1331+45 LT

500 REMOVAL
 1326+00 - 1331+50
 Item 101-A

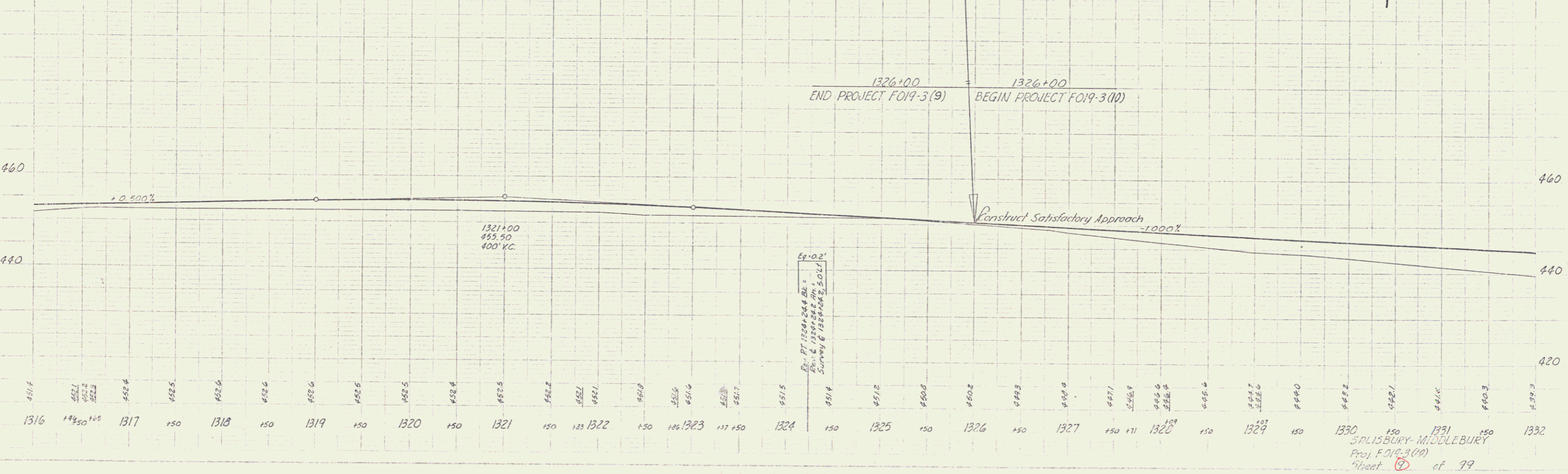
PAVEMENT REMOVAL
 1328+25 - 1331+50
 Item 101-A

#18 B HOWARD A B BEATRICE K FOSTER
 (A 3.5 2) STA 1309+40 - 1338+77 RT
 CULVERT RIGHTS STA 1313+00, 1331+60 ±
 TITLE TAKEN: COND, 11/20/59
 RECORDED: SALISBURY - BK 24 - PG 229-11/24/59



TYPICAL MUCK EXCAVATION
 SCALE: 3/8" = 1'-0"

1326+00 END PROJECT FO19-3(9)
 1326+00 BEGIN PROJECT FO19-3(10)



SALISBURY-MIDDLEBURY
 Proj F 019-3(10)
 Sheet 7 of 99