

SCD REMOVAL - ITEM 101-A
 1263+50 - 1272+40
 1281+75 - 1284+00

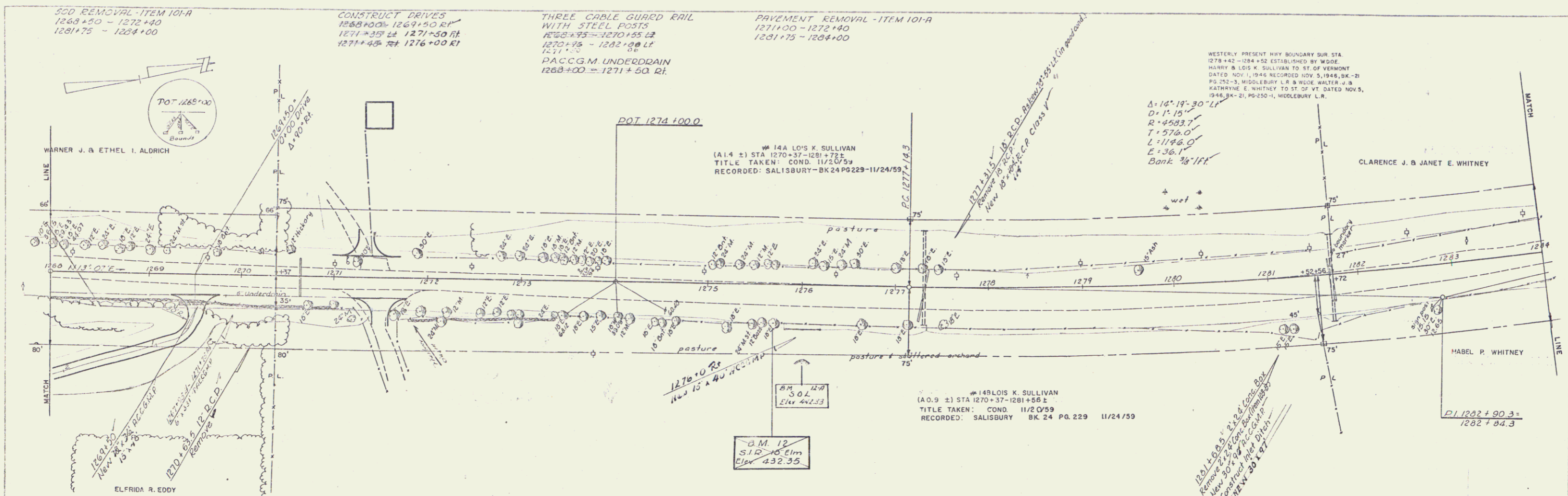
CONSTRUCT DRIVES
 1268+00 - 1269+50 RT
 1271+35 LT 1271+50 RT
 1271+45 RT 1276+00 RT

THREE CABLE GUARD RAIL
 WITH STEEL POSTS
 1268+35 - 1270+55 LT
 1270+35 - 1282+88 LT
 1271+15
 P.A.C.C.M. UNDERDRAIN
 1268+00 - 1271+50 RT

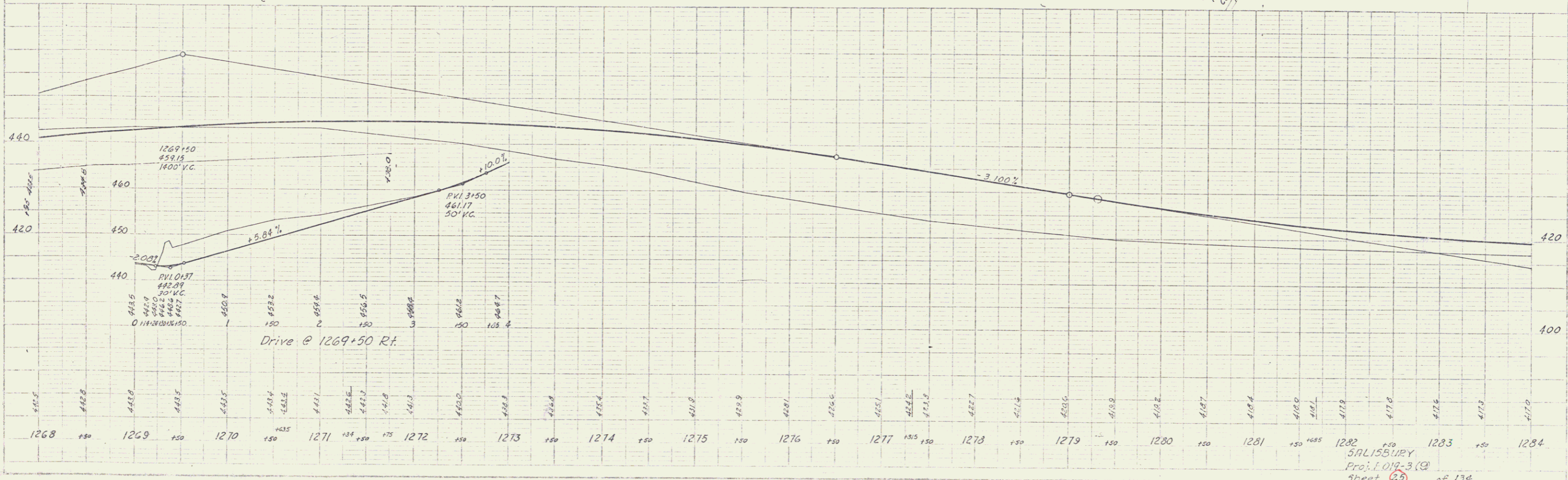
PAVEMENT REMOVAL - ITEM 101-A
 1271+00 - 1272+40
 1281+75 - 1284+00

WESTERLY PRESENT HWY BOUNDARY SUR STA
 1278+42 - 1284+52 ESTABLISHED BY WIDE
 HARRY B. LOIS K. SULLIVAN TO ST. OF VERMONT
 DATED NOV. 1, 1946 RECORDED NOV. 5, 1946, BK - B
 PG. 292-3, MIDDLEBURY L.R. & WIDE WALTER J. B.
 KATHRYNE E. WHITNEY TO ST. OF VT. DATED NOV. 5,
 1946, BK - B, PG. 290-1, MIDDLEBURY L.R.

PLAN
 1:50
 4-56
 TRACED
 K2



PROFILE
 1:50
 4-56



SALISBURY
 Proj. 1019-3 (3)
 Sheet 25 of 134

8