

INDEX OF SHEETS

STATE OF VERMONT  
DEPARTMENT OF HIGHWAYS  
PROPOSED IMPROVEMENT

FEDERAL AID PROJECT

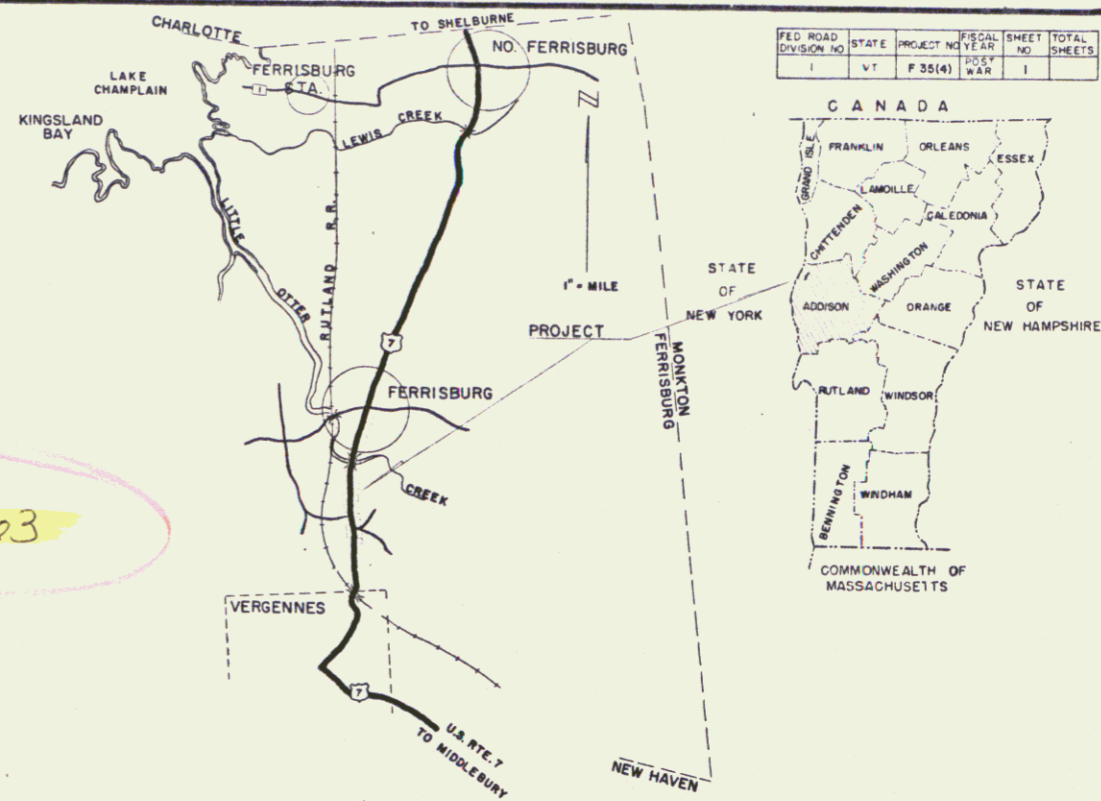
TOWN OF FERRISBURG

COUNTY OF ADDISON

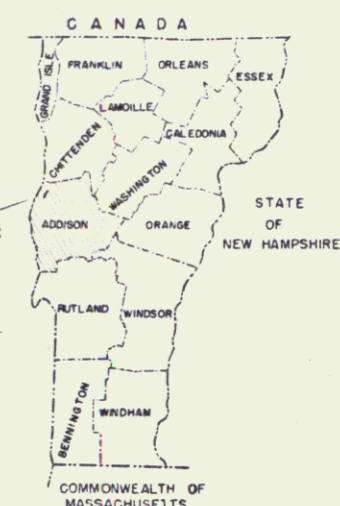
U.S. ROUTE 7 *Pin # 99R463*

CHARLOTTE - VERGENNES ROAD

BEGINNING AT A POINT 2,999.0 FEET FROM THE VERGENNES-  
FERRISBURG TOWN LINE AND EXTENDING NORTHERLY 6,800 FEET.  
LENGTH OF PROJECT 6,800.0 FEET = 1.288 MILES.  
LENGTH OF ROADWAY FEET  
LENGTH OF BRIDGE FEET

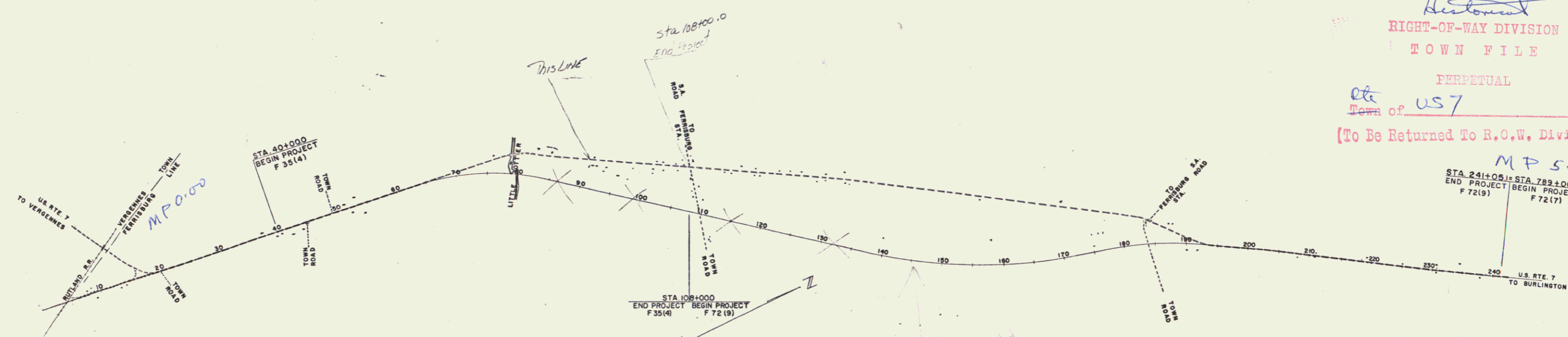


| FED. ROAD DIVISION NO. | STATE | PROJECT NUMBER | SHEET NO. | TOTAL SHEETS |
|------------------------|-------|----------------|-----------|--------------|
| 1                      | VT    | F 35(4)        | 1         | 1            |



*Now just 3000' - 400'*

*Heston*  
RIGHT-OF-WAY DIVISION  
TOWN FILE  
PERPETUAL  
*etc*  
Town of *US7*  
(To Be Returned To R.O.W. Division)



CONVENTIONAL SIGNS

- COUNTY LINE
- TOWN LINE
- FENCE LINE
- STONE WALL
- UNFENCED PROPERTY
- GUARD RAIL
- TRAVELED WAY
- RAILROAD
- RETAINING WALL
- CENTER LINE
- SURVEY LINE
- CULVERT
- DROP INLET
- TROLLEY POLE
- POWER POLE
- TELEPHONE POLE
- TREES
- HEDGE

- GROUND ELEVATION DATUM
- GRADE ELEVATION DATUM
- CURVE DATA
- DEFLECTION OF ANGLE
- DEGREE OF CURVE
- RADIUS OF CURVE
- TANGENT DISTANCE
- LENGTH OF CURVE
- EXTERNAL DISTANCE
- POINT OF INTERSECTION
- POINT OF CURVE
- POINT ON TANGENT
- POINT ON TANGENT
- POINT ON SUB-TANGENT

SCALES

|                    |           |
|--------------------|-----------|
| TITLE              | 1" = 800' |
| TYPICAL            | 1" = 5'   |
| PLAN               | 1" = 50'  |
| PROFILE HORIZONTAL | 1" = 10'  |
| CROSS-SECTIONS     | 1" = 5'   |

THESE PLANS ARE SUBJECT TO SUCH REVISIONS AS MAY BE REQUIRED BY THE BUREAU OF PUBLIC ROADS OR THE COMMISSIONER OF HIGHWAYS.  
CONSTRUCTION IS TO BE CARRIED ON IN ACCORDANCE WITH THE PLANS AND THE STANDARD SPECIFICATIONS FOR HIGHWAY AND BRIDGE CONSTRUCTION OF JANUARY 1956, SUBMITTED TO THE BUREAU OF PUBLIC ROADS FOR APPROVAL ON APRIL 9, 1956 INCLUDING ALL SUBSEQUENT APPROVED REVISIONS AND SUCH REVISION SPECIFICATIONS AND SPECIAL PROVISIONS AS ARE SUBMITTED WITH THE PLANS.

DEPARTMENT OF COMMERCE  
BUREAU OF PUBLIC ROADS

|  |   |                                     |                                       |                                      |   |                        |
|--|---|-------------------------------------|---------------------------------------|--------------------------------------|---|------------------------|
| APPROVED<br>SECONDARY ENGINEER<br>DATE | APPROVED<br>CONSTRUCTION ENGINEER<br>DATE | APPROVED<br>BRIDGE ENGINEER<br>DATE | APPROVED<br>DISTRICT ENGINEER<br>DATE | APPROVED<br>HIGHWAY ENGINEER<br>DATE | APPROVED<br>CHIEF ENGINEER<br>DATE<br>SUBMITTED BY ORDER OF THE STATE HIGHWAY BOARD | PROJECT<br>F NO. 35(4) |
|--|---|-------------------------------------|---------------------------------------|--------------------------------------|---|------------------------|

*1/1/67*

SHEET 1 OF SHEETS  
WEBSTER-MARTIN, INC. CONSULTING ENGINEERS,  
80 BURLINGTON, VERMONT.



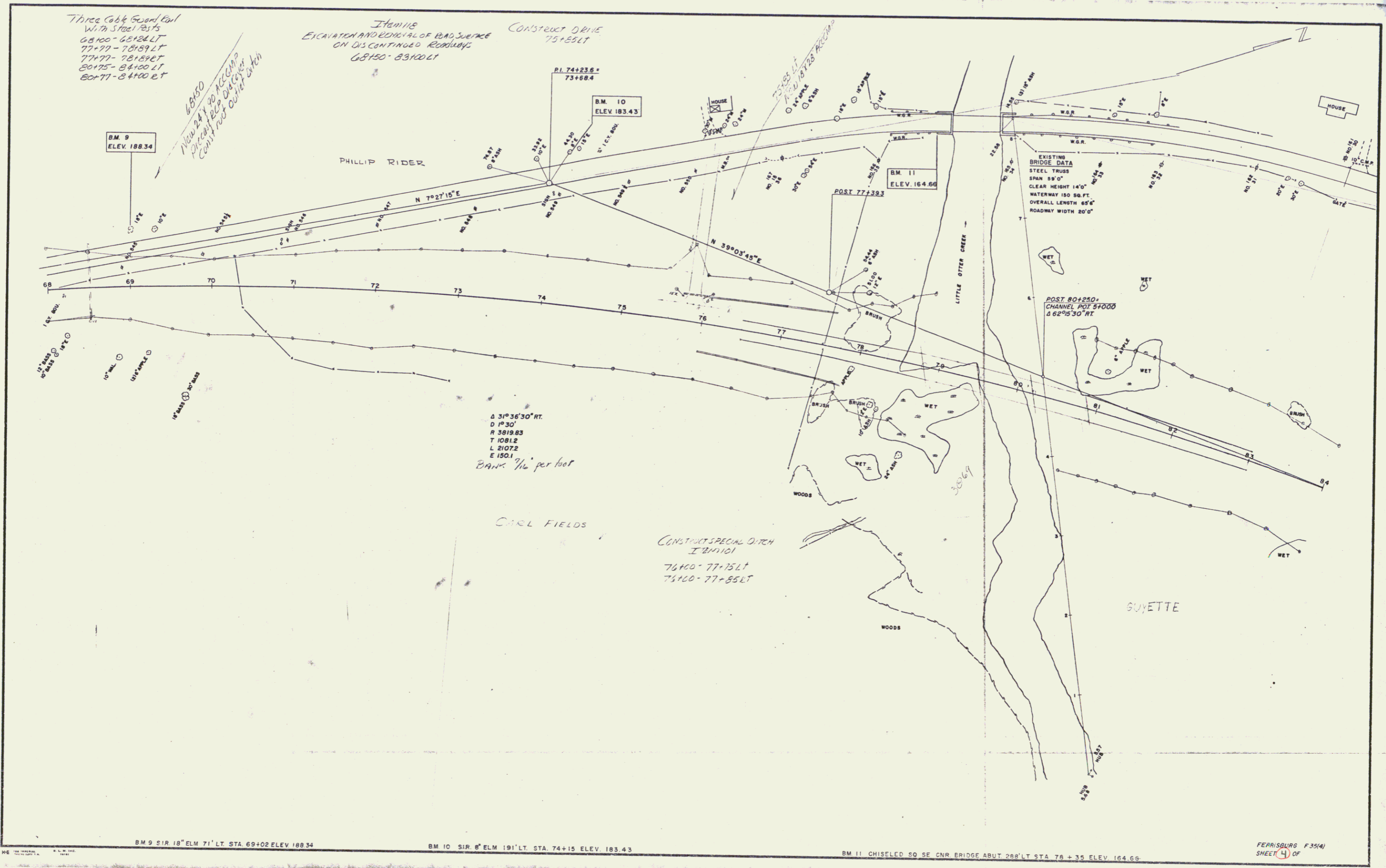


Three Cable Guard Rail  
With Steel Posts  
68100-68124 LT  
77+77-78159 LT  
80+75-84100 LT  
80+77-84100 LT

68150  
New 24" x 40" T&E  
Ditch 250' Long  
Cont. 100' Outer Ditch

Item 118  
Excavation and Removal of Road Surface  
on Discontinued Roadway  
68150-83100 LT

Construct Ditch  
75+85 LT



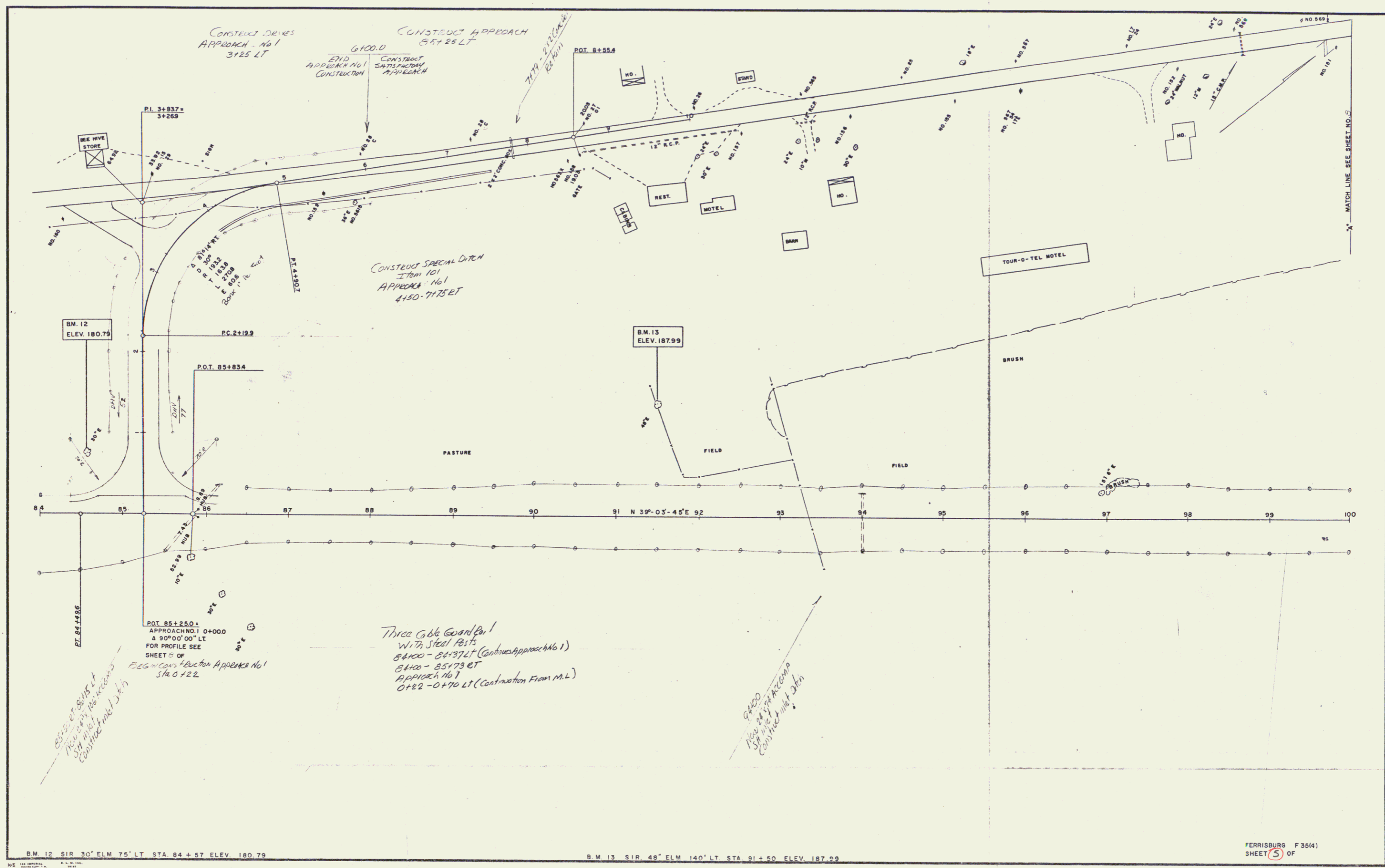
BM 9 SIR 18" ELM 71' LT. STA. 69+02 ELEV. 188.34

BM 10 SIR 8" ELM 191' LT. STA. 74+15 ELEV. 183.43

BM 11 CHISELED 50 SE CNR BRIDGE ABUT 28' LT STA. 78+35 ELEV. 164.66

FERRISBURG F.35(4)  
SHEET (4) OF

45



CONSTRUCT DRAIN APPROACH No 1 3125 LT

CONSTRUCT APPROACH 6100.0 54125 LT

CONSTRUCT SPECIAL DITCH FROM 101 APPROACH No 1 4150-7175 ET

POT. 85+250 APPROACH NO. 1 0+000 & 90°00'00" LT FOR PROFILE SEE SHEET E OF BEGIN CONSTRUCTION APPROACH NO. 1 STA. 0+122

85+250 ET 88+115 ET New 24" dia. pipe section 541' with 1" dia. concrete lined ditch

Three 6" dia. Guard Poles with Steel Posts 84+00 - 84+375 LT (Construct Approach No 1) 84+00 - 85+73 ET Approach No 1 0+22 - 0+70 LT (Construct from M.L.)

6100.0 15' dia. pipe section 541' with 1" dia. concrete lined ditch

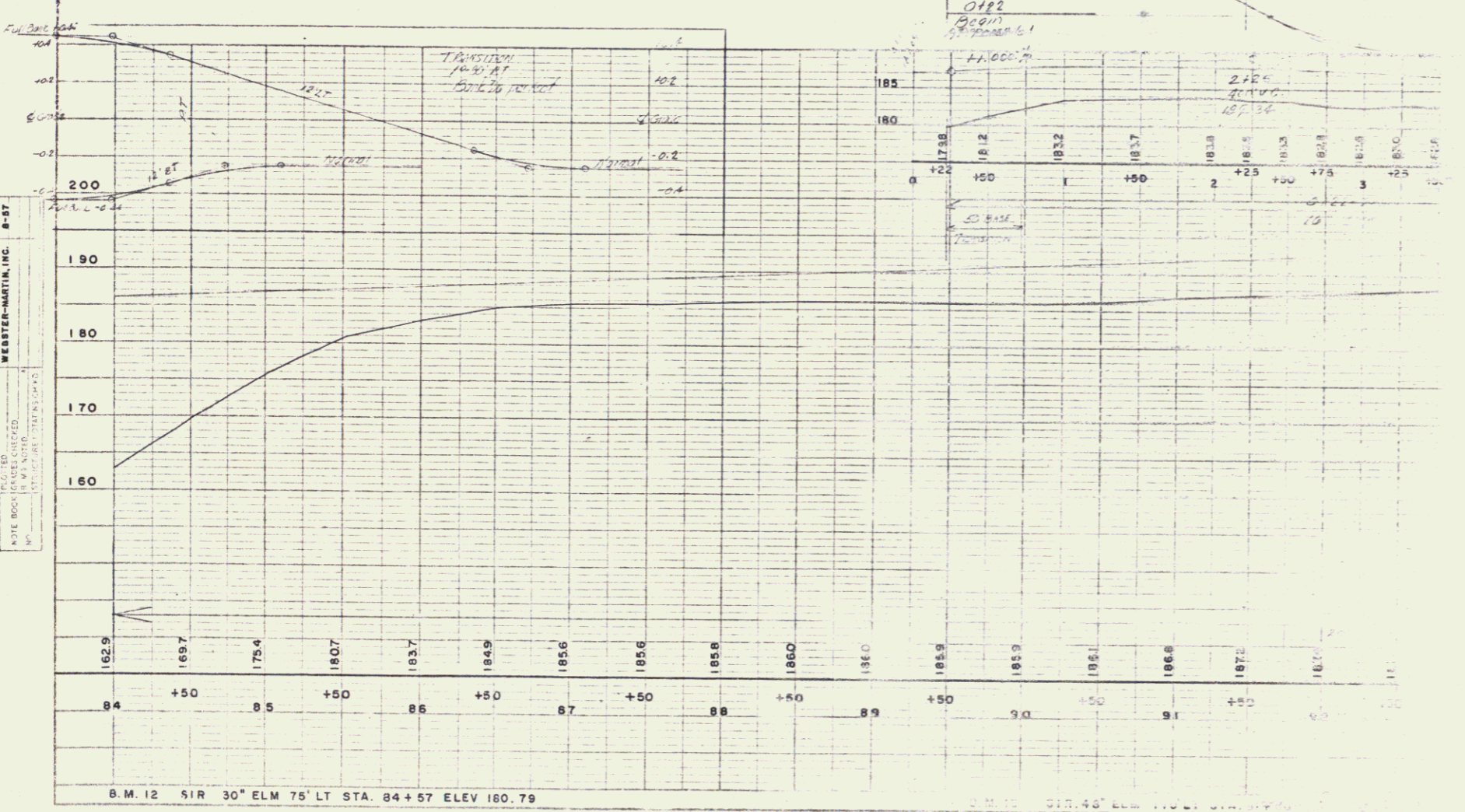
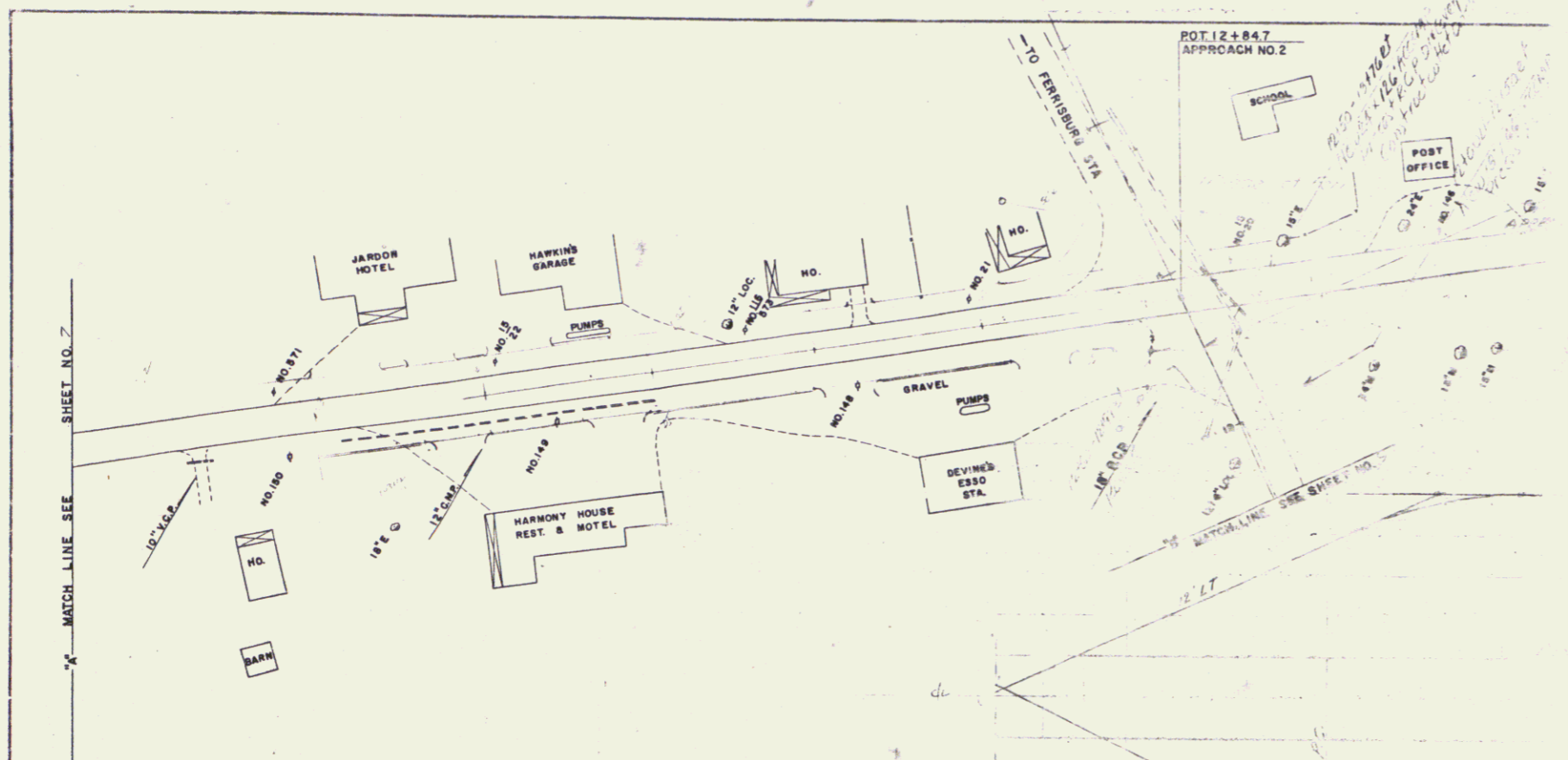
B.M. 12 S.I.R. 30' ELM 75' LT STA. 84 + 57 ELEV. 180.79

B.M. 13 S.I.R. 48' ELM 140' LT STA. 91 + 50 ELEV. 187.99

FERRISBURG F 3514) SHEET 5 OF

PLAN  
 DESIGNED BY  
 WESTER-MARTIN, INC.  
 8-37  
 CHECKED BY  
 WESTER-MARTIN, INC.  
 8-37  
 NOTE BOOK  
 NO. 1000  
 DATE 10/15/54

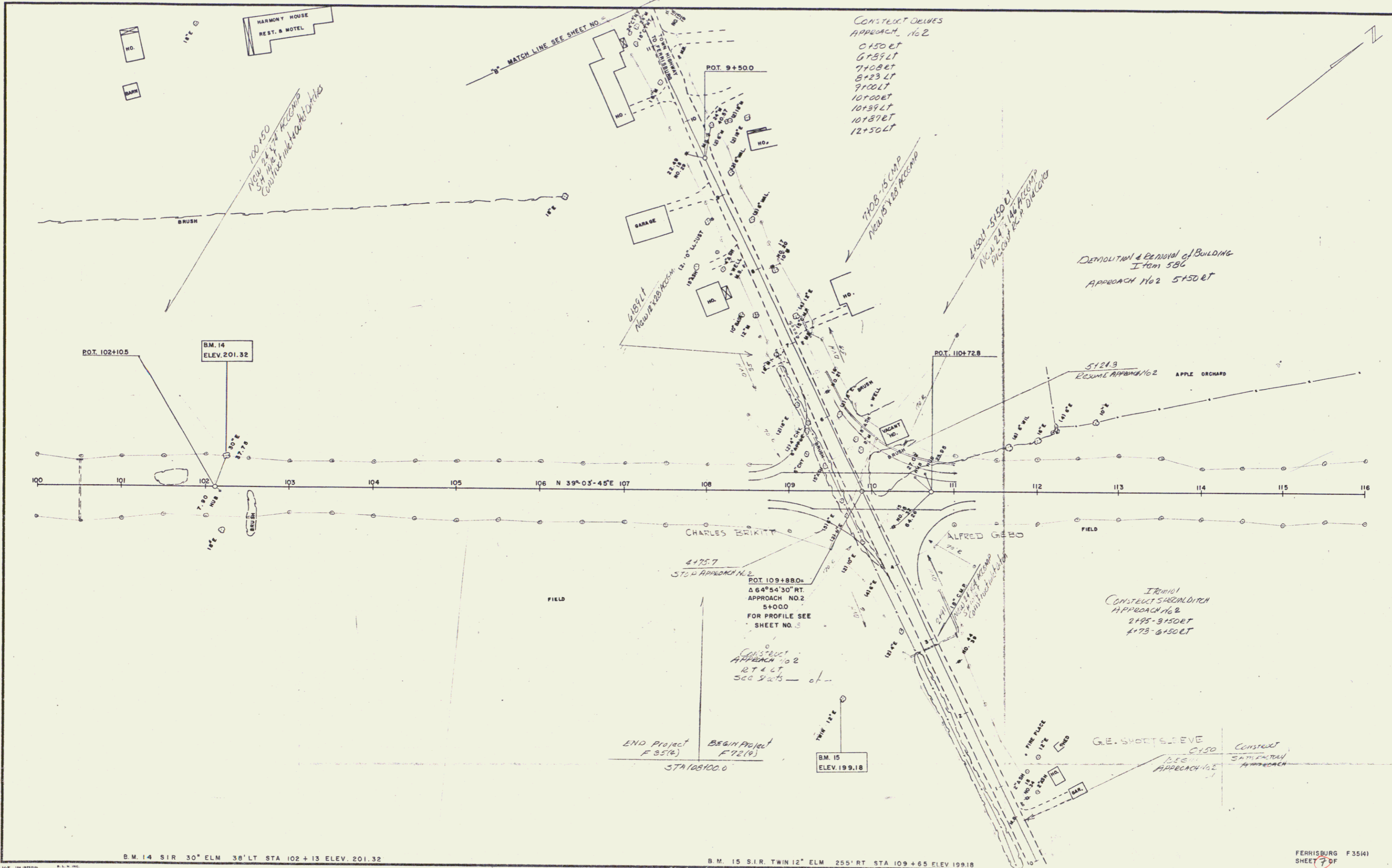
PROFILE  
 DESIGNED BY  
 WESTER-MARTIN, INC.  
 8-37  
 CHECKED BY  
 WESTER-MARTIN, INC.  
 8-37  
 NOTE BOOK  
 NO. 1000  
 DATE 10/15/54



B.M. 12 51R 30° ELM 75' LT STA. 84+57 ELEV 160.79

6

6



B.M. 14 S1R 30° ELM 38' LT STA 102+13 ELEV. 201.32

B.M. 15 S1R TWIN 12° ELM 255' RT STA 109+65 ELEV. 199.18

FERRISBURG F 35(4)  
SHEET 7 OF 7

7