

INDEX OF SHEETS

- SHEET NO. 1. Title Page
 2. Typical Cross Sections of Improvement
 3. Item Quantity and Drainage Sheet
 4. Earthwork Sheet
 5-10. Plan and Profile Sheets
 11. B-1 Banking Tables
 12. B-5 Typical Slope Grading
 13. B-12 Side Road Intersection
 14. B-16 Divisional Islands and Storage Lanes
 15. C-1 Curb Details
 16. D-2 Details of Headwalls
 17. D-3 Jute Matting
 18. D-4 Details of Flushing Basin
 19. D-8 Details of Reinf. Conc. Drop Inlets
 20. D-10 Details of Grates and Tops for Drop Inlets
 21. E-1 Barricades, signs and lights (for Roadways)
 22. J-1 Project and Boundary Markers
 23-24. Cross Section Details
 25. *Final Earthwork Sheet*
 26. *Drainage Sheet*
 27. *As shown on 10/11/65*

PROJECT NAME & NUMBER TYPE PAVEMENT AREA
 WALTHAM-FERRISBURG ST 19-4-001 BIT. CONC. PAV'T.

RECORD PLANS
 MATERIALS
 SUBBASE OF GRAVEL-POOSKA PIT BRISTOL, VT
 SUBBASE OF SAND-KILBURN PIT BRISTOL, VT
 GRAVEL SHOULDERS-POOSKA PIT BRISTOL, VT
 STONE CRITS-DEMERS QUARRY WINDSOEKI, VT
 CUTBACK ASPHALT-ALL STATES ASPHALT INC. SUNDERLAND, MASS.
 CRUSHED PLANT MIXED BASE COURSE-L.M.PIKE FLORENCE, VT.
 BITUMINOUS CONCRETE PAVEMENT-L.M.PIKE FLORENCE, VT.
 BITUMINOUS CONC. SURFACE FOR CUTTERS & TRAFFIC ISLAND L.M.PIKE
 ACCOMP. PIPE & ARCH & UNDERDRAIN-NEW ENGLAND METAL CO. ARMCO
 WHITE RIVER JCT. VERMONT

R.C. PIPE ST. GRISWALL CO. INC. WILLISTON, VT
 CON. CLASS "B" ST. GRISWALL CO. INC. WILLISTON, VT.

CONTRACTOR: COOLEY CONST. CO. INC. BARRE, VT.
 RESIDENT ENG. ARMOND A. PICHE
 RECORD PLANS S.H. WHITNEY
 CONTRACT:
 DATED JUNE 11, 1965
 STARTED JUNE 14, 1965
 COMPLETED AUG. 1, 1965
 ACCEPTED AUG. 4, 1965

STATE OF VERMONT
 DEPARTMENT OF HIGHWAYS

PROPOSED IMPROVEMENT
 STATE PROJECT

TOWNS OF WALTHAM-FERRISBURG

COUNTY OF ADDISON

U.S. ROUTE 7

Pin # 99R46L

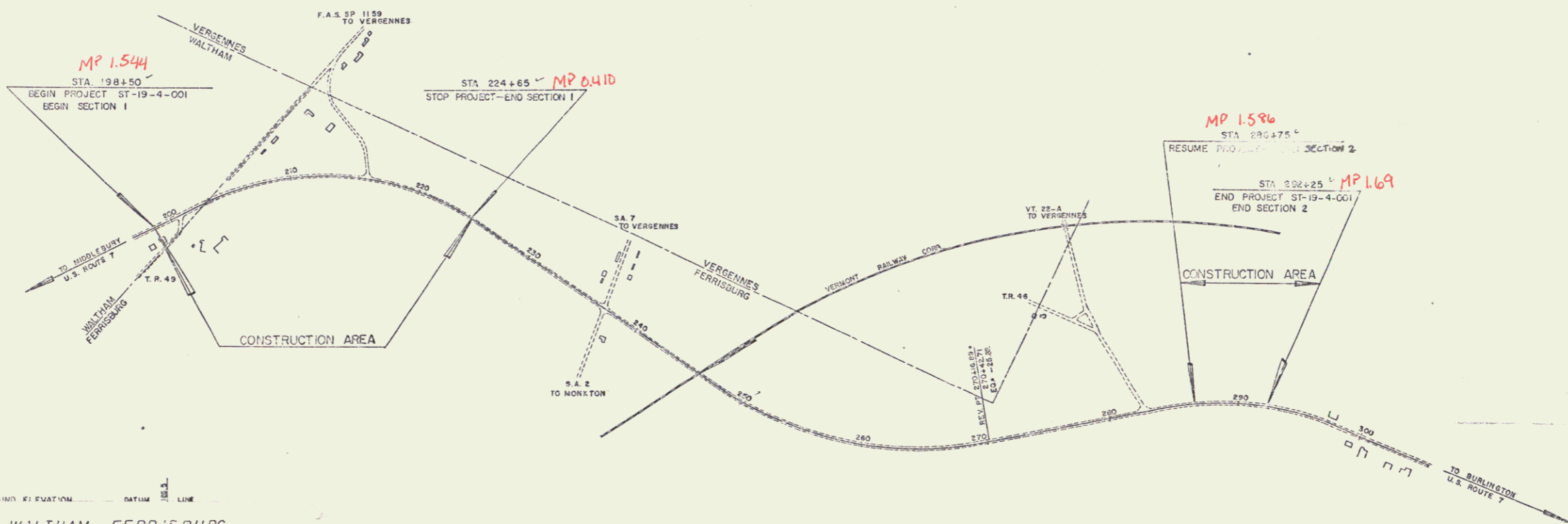
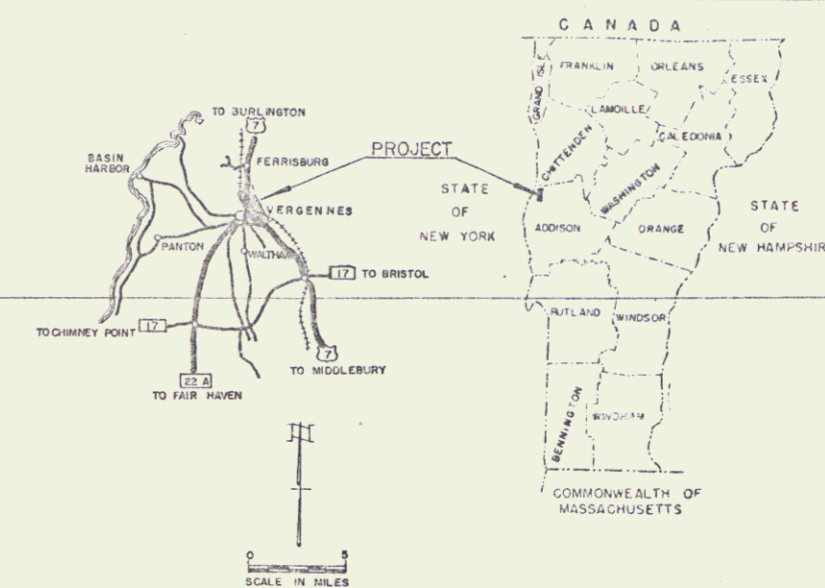
MIDDLEBURY-BURLINGTON ROAD

BEGINNING AT A POINT 1.547 MILES NORTH OF THE
 NEW HAVEN-WALTHAM TOWN LINE AND EXTENDING
 NORTHERLY 1.770 MILES, EXCLUDING 1.171 MILES.

LENGTH OF ROADWAY 2,615 FEET = 0.495 MILE (SECTION 1)
 LENGTH OF ROADWAY 550 FEET = 0.104 MILE (SECTION 2)
 LENGTH OF PROJECT 3,165 FEET = 0.599 MILE

1960 ADT 2280-3100
 1980 ADT 3220-4950
 1980 DHV 445-645
 D 60 %
 T 5 %
 DESIGN SPEED 60 M.P.H.

FED. ROAD DISTRICT NO.	STATE	PROJECT NO.	SHEET NO.	TOTAL SHEETS
1	VT	ST-19-4-001	1	1



CONVENTIONAL SIGNS

- COUNTY LINE
- TOWN LINE
- FENCE LINE
- STONE WALL
- UNFENCED PROPERTY
- GUARD RAIL
- TRAVELED WAY
- RAILROAD
- RETAINING WALL
- CENTER LINE
- SURVEY LINE
- GALVANT
- DITCH
- TRUCK STOP
- POWER POLE
- TELEPHONE POLE
- TRUCKS
- TRUCKS

WALTHAM-FERRISBURG ST 19-4-001
 CONTRACTOR: COOLEY CONST. CO. INC. BARRE, VT.
 RECORD PLANS S.H. WHITNEY

PROJECT WALTHAM-FERRISBURG
 NUMBER ST 19-4-001 LENGTH 0.599 MI.
 TYPE 3" BITUMINOUS CONCRETE
 CONTRACTOR COOLEY CONST. CO. INC.
 BEGINNING AT A POINT 1.547 MILES NORTH OF
 THE NEW HAVEN-WALTHAM TOWN LINE AND EXTENDING
 NORTHERLY 1.770 MILES, EXCLUDING 1.171 MILES.

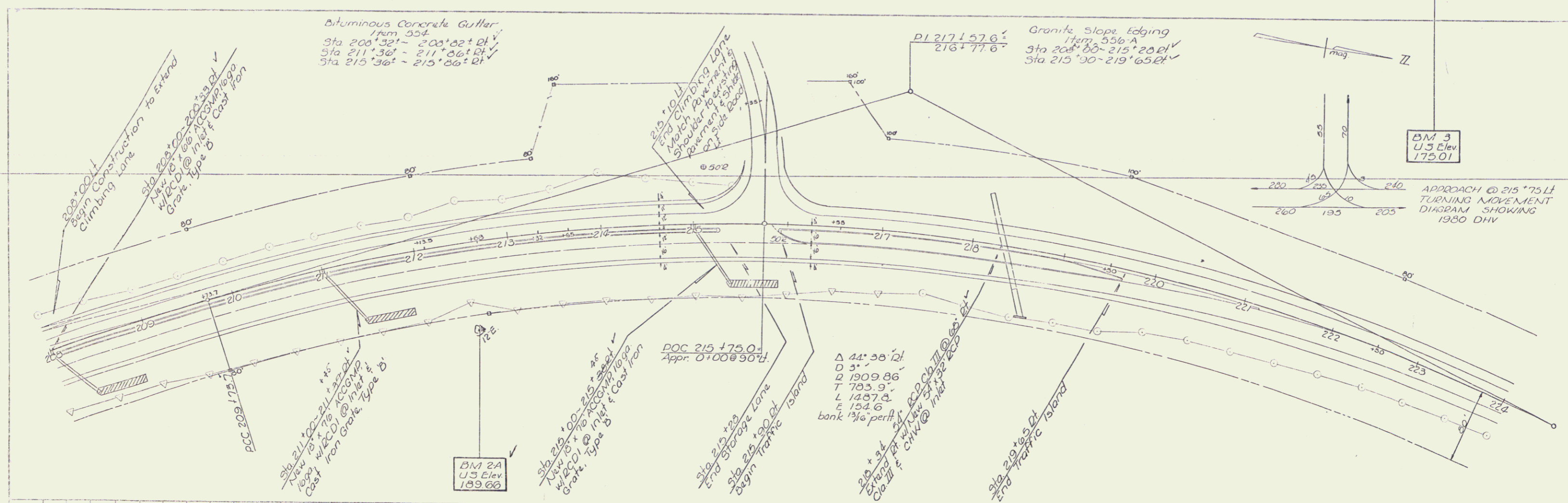


THESE PLANS ARE SUBJECT TO SUCH REVISIONS AS MAY BE
 REQUIRED BY THE BUREAU OF PUBLIC ROADS OR THE COMMISSIONER
 OF HIGHWAYS.
 CONSTRUCTION IS TO BE CARRIED ON IN ACCORDANCE WITH
 THESE PLANS AND THE STANDARD SPECIFICATIONS FOR HIGHWAY AND BRIDGE
 CONSTRUCTION DATED APRIL 1964, AS APPROVED BY THE BUREAU OF
 PUBLIC ROADS ON OCTOBER 12, 1964, INCLUDING ALL SUBSEQUENT
 APPROVED REVISIONS AND SUCH REVISED SPECIFICATIONS AND SPECIAL
 PROVISIONS AS ARE INCORPORATED IN THESE PLANS.

DEPARTMENT OF COMMERCE
 BUREAU OF PUBLIC ROADS
 APPROVED

APPROVED <i>P.H. Carroll</i> DIST. CHIEF ENGINEER DATE 8/20/65	APPROVED <i>E.H. O'Rourke</i> COMMISSIONER DATE 8-30-65	APPROVED _____ DISTRICT ENGINEER DATE _____	APPROVED <i>J. Smith</i> DISTRICT ENGINEER DATE 8/20/65	APPROVED <i>J.W. Jones</i> PROJECT ENGINEER DATE 8-27-65	APPROVED <i>A.B. Bishop</i> CHIEF ENGINEER DATE 8/20/65	APPROVED _____ CHIEF ENGINEER DATE _____
--	---	---	---	--	---	--

DIVISION ENGINEER DATE
 PROJECT ST 19-4-001
 SHEET 1 OF 84 SHEETS

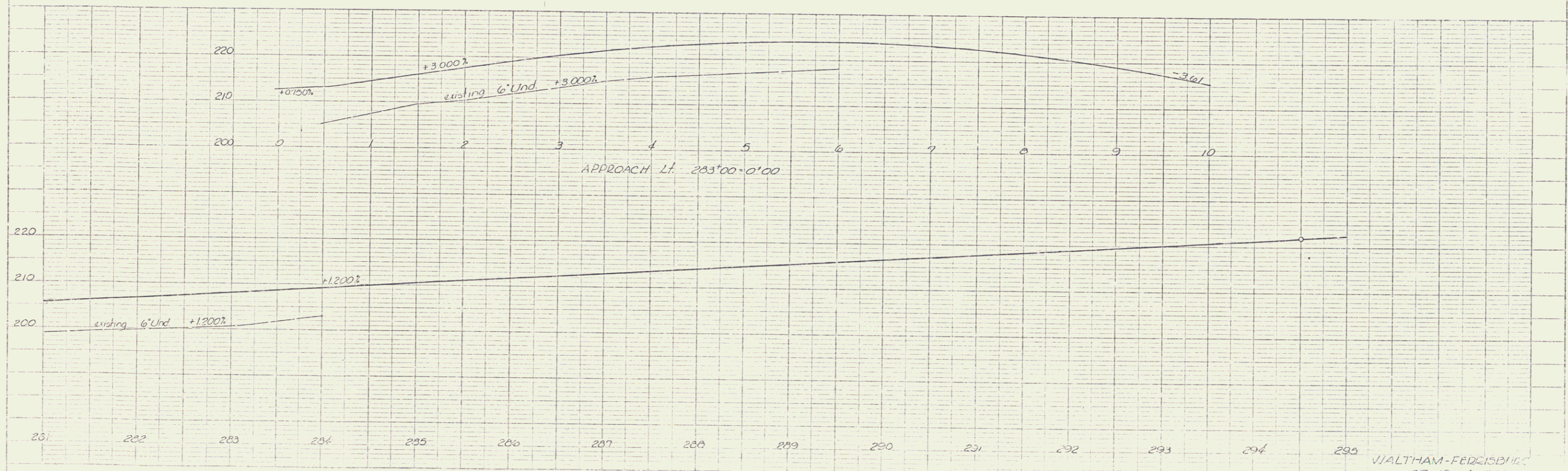
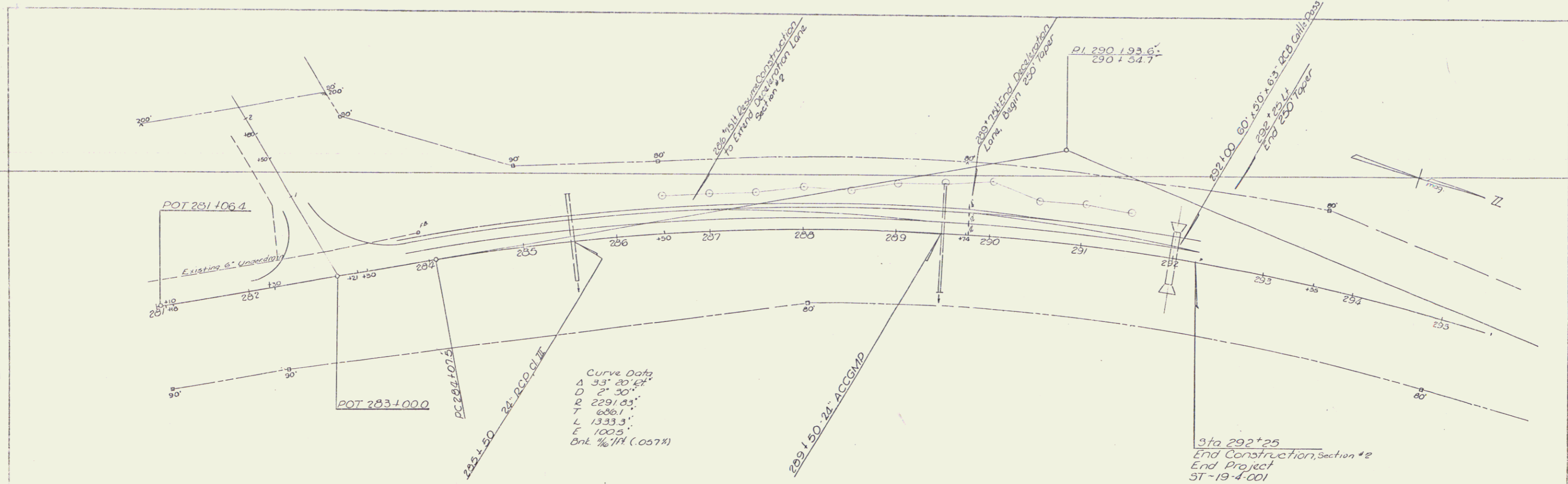


PLAN
Scale
Date

PROJECT
Location
Date

KALITHAM-FERRISBURG
JT-19-4-001
Sheet 6 of 34

PAE
MANUFACTURING



DATE: 1/14/2008
 DRAWN BY: [illegible]

WALTHAM-FEDERISBURG
 3T-19-4-001
 Section #2
 Sheet 10 of 34

5