

INDEX OF SHEETS

SHEET NO.	TITLE PAGE	DESCRIPTION
1	TITLE PAGE	
2	TYPICAL CROSS-SECTION OF IMPROVEMENT	GRADING, BASE, AND CURBSIDE WITH DOUBLE TRUCK COAT OF REFINED TAR
3	BANKING AND WIDENING TABLES	
4-5	PLAN AND PROFILE STA. 10+51.5 STA. 26+80.6	
6	STANDARD STRUCTURE SHEET	S-28 PIPE CULVERTS
7	"	S-30 GUARD RAIL AND C.R.M. WALL
8	"	S-31 BOUNDARY MARKERS
9	"	S-40 BARRICADES SIGNS AND LIGHTS
10	"	S-41 ROUNDING OF SLOPES
12-16	CROSS SECTIONS	
11	OMITTED	

STANDARD STRUCTURE SHEETS APPROVED BY THE CHIEF ENGINEER  
 S-28 & S-29 JULY 11, 1933  
 S-30 AUG 15, 1933  
 S-31 JULY 25, 1934

STATE OF VERMONT  
 STATE HIGHWAY DEPARTMENT  
 PLAN AND PROFILE OF PROPOSED  
 STATE HIGHWAY  
 FEDERAL AID PROJECT

TOWN OF NEW HAVEN

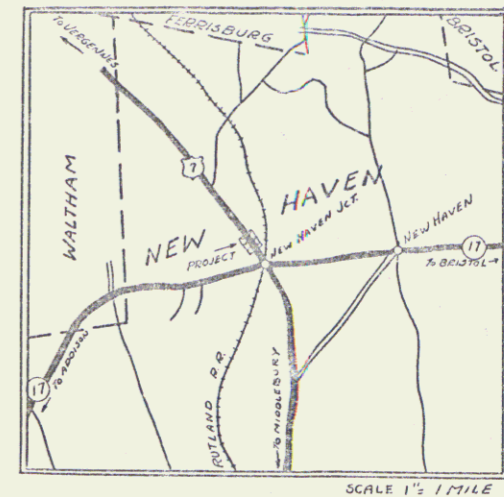
MIDDLEBURY-BURLINGTON ROAD

Pin# 99R457

BEGINNING 1400± FT. NORTHERLY OF THE INTERSECTION OF ROUTE 17 WITH ROUTE U.S. 7 AND EXTENDING NORTHERLY 0.256 MILES TO A POINT 10632.5 FT. SOUTHERLY OF THE NEW HAVEN-WALTHAM TOWN LINE  
 LENGTH OF PROJECT 1353.5 FT. = 0.256 MILES

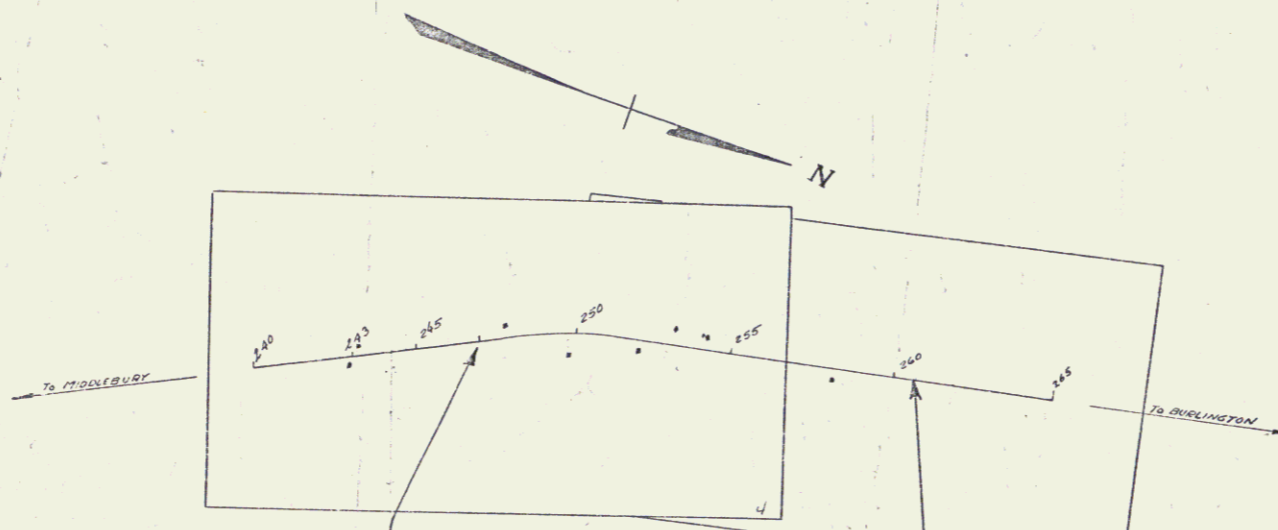
FED. ROAD DIST. NO.	STATE	PROJ. NO.	FISCAL YEAR	SHEET NO.	TOTAL SHEETS
9	Vt.	13	1936	1	16

(cont. 4)



RIGHT-OF-WAY DIVISION  
 TOWN FILE  
 PERPETUAL  
 Town of US7  
 (To Be Returned To R.O.W. Division)

APPROVED: April 10, 1936  
 Commissioner of Highways  
 SUBMITTED BY ORDER OF THE STATE HIGHWAY BOARD



CONVENTIONAL SIGNS

- GROUND ELEVATION DATUM LINE
- GRADE ELEVATION DATUM LINE
- CURVE DATA
- DEFLECTION ANGLE Δ
- DEGREE OF CURVE D
- RADIUS OF CURVE R
- TANGENT DISTANCE T
- LENGTH OF CURVE L
- EXTERNAL DISTANCE E
- POINT OF INTERSECTION P. I.
- POINT OF CURVE P. C.
- POINT OF TANGENT P. T.
- POINT ON TANGENT P. O. T.

SCALES

TITLE	1" = 300'
TYPICAL	1" = 2'
PLAN	1" = 50'
PROFILE	1" = 10'
CROSS SECTIONS	1" = 5'

These plans are subject to such revisions as may be required by the Bureau of Public Roads or the Commissioner of Highways. Construction is to be carried on in accordance with the plans and Standard Road and Bridge Specifications of 1936, as approved Dec. 22, 1936, by the Bureau of Public Roads, including all subsequent approved revisions and such revised specifications and special provisions as are submitted with the plans.

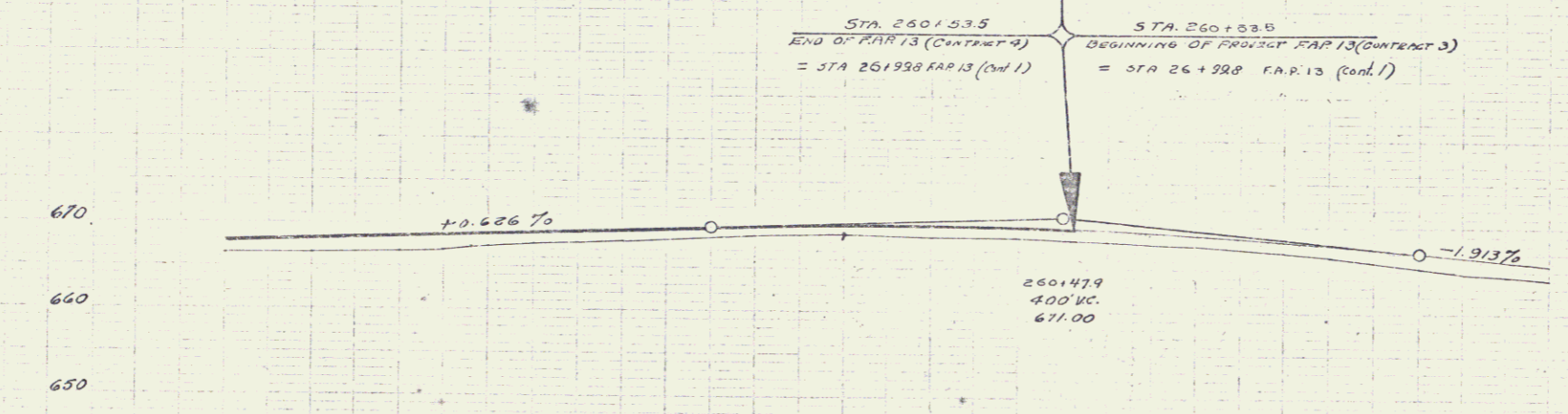
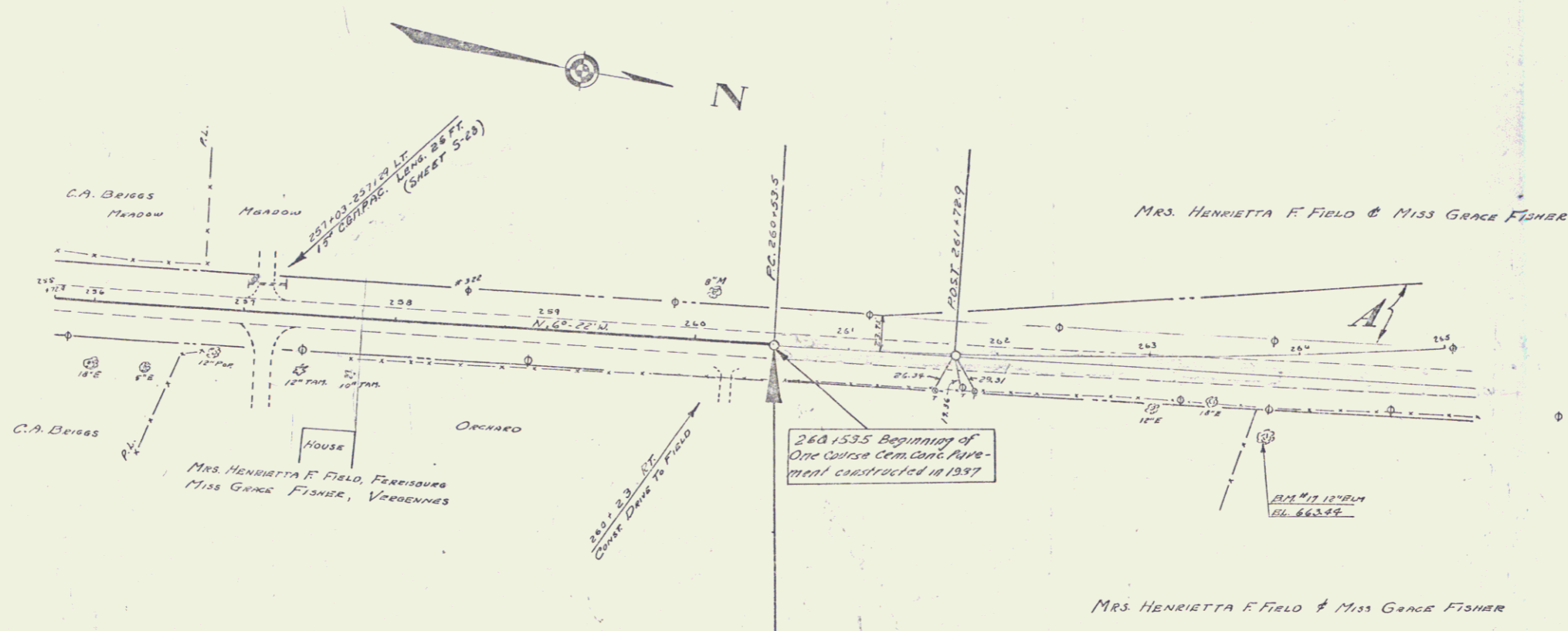
Project # F.A.P. 13 Contract 4  
 RECOMMENDED [Signature]  
 DISTRICT ENGINEER BUREAU OF PUBLIC ROADS  
 RECOMMENDED FOR APPROVAL [Signature]  
 CHIEF ENGINEER BUREAU OF PUBLIC ROADS  
 APPROVED [Signature]  
 DISTRICT ENGINEER BUREAU OF PUBLIC ROADS

APPROVED: 25, 1936  
 SHEET 1 OF 16



275

E.H. Canale  
R.M. Staudom



STA. 258+72.9 - STA. 260+53.5  
SHIPPING COURSE OF GRAVEL

256	257	258	259	260	261	262	263
666.0	665.0	664.0	663.0	662.0	661.0	660.0	659.0
668.0	667.0	666.0	665.0	664.0	663.0	662.0	661.0
669.0	668.0	667.0	666.0	665.0	664.0	663.0	662.0
670.0	669.0	668.0	667.0	666.0	665.0	664.0	663.0
671.0	670.0	669.0	668.0	667.0	666.0	665.0	664.0
672.0	671.0	670.0	669.0	668.0	667.0	666.0	665.0
673.0	672.0	671.0	670.0	669.0	668.0	667.0	666.0
674.0	673.0	672.0	671.0	670.0	669.0	668.0	667.0
675.0	674.0	673.0	672.0	671.0	670.0	669.0	668.0
676.0	675.0	674.0	673.0	672.0	671.0	670.0	669.0
677.0	676.0	675.0	674.0	673.0	672.0	671.0	670.0
678.0	677.0	676.0	675.0	674.0	673.0	672.0	671.0
679.0	678.0	677.0	676.0	675.0	674.0	673.0	672.0
680.0	679.0	678.0	677.0	676.0	675.0	674.0	673.0
681.0	680.0	679.0	678.0	677.0	676.0	675.0	674.0
682.0	681.0	680.0	679.0	678.0	677.0	676.0	675.0
683.0	682.0	681.0	680.0	679.0	678.0	677.0	676.0
684.0	683.0	682.0	681.0	680.0	679.0	678.0	677.0
685.0	684.0	683.0	682.0	681.0	680.0	679.0	678.0
686.0	685.0	684.0	683.0	682.0	681.0	680.0	679.0
687.0	686.0	685.0	684.0	683.0	682.0	681.0	680.0
688.0	687.0	686.0	685.0	684.0	683.0	682.0	681.0
689.0	688.0	687.0	686.0	685.0	684.0	683.0	682.0
690.0	689.0	688.0	687.0	686.0	685.0	684.0	683.0
691.0	690.0	689.0	688.0	687.0	686.0	685.0	684.0
692.0	691.0	690.0	689.0	688.0	687.0	686.0	685.0
693.0	692.0	691.0	690.0	689.0	688.0	687.0	686.0
694.0	693.0	692.0	691.0	690.0	689.0	688.0	687.0
695.0	694.0	693.0	692.0	691.0	690.0	689.0	688.0
696.0	695.0	694.0	693.0	692.0	691.0	690.0	689.0
697.0	696.0	695.0	694.0	693.0	692.0	691.0	690.0
698.0	697.0	696.0	695.0	694.0	693.0	692.0	691.0
699.0	698.0	697.0	696.0	695.0	694.0	693.0	692.0
700.0	699.0	698.0	697.0	696.0	695.0	694.0	693.0

B.M. #17 12" BLM 50 FT. R. 263+70 ELEV. 663.94

3