

GRAVEL SURFACE COURSE REQUIRED
ESTIMATED QUANTITY 20 Cu. Yds.

BORROW REQUIRED
ESTIMATED QUANTITY 25 Cu. Yds.

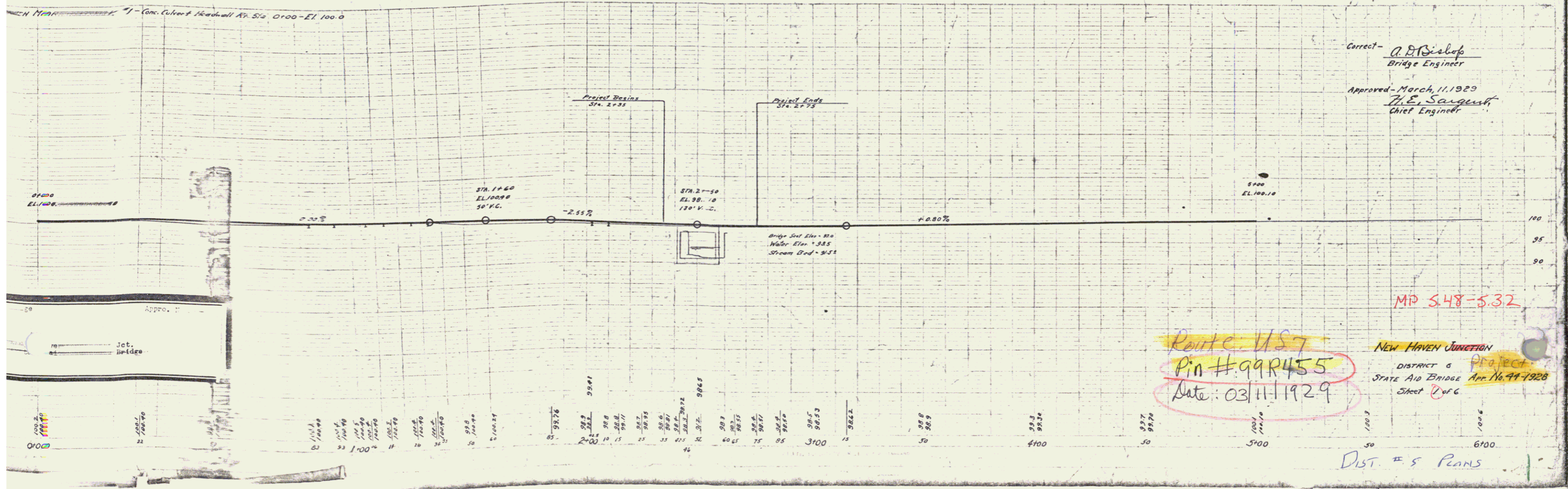
CABLE GUARD RAIL REQUIRED
LEFT - Sta. 2+12 to Sta. 2+92 - 80 Lin. Ft.
RIGHT - Sta. 2+36 to Sta. 2+92 - 56 Lin. Ft.

New cable rail shall be connected to the old cable rail as determined by Engineer in field. The cost of connecting the rail shall be included in unit price bid for Cable Guard Rail.

The exact location of the bridge shall be determined by the Engineer in the field to fit conditions.

INDEX OF SHEETS
SHEET No. 1 - PLAN AND PROFILE.
SHEET No. 2 - TYPICAL SECTIONS - GRAVEL SURFACE COURSE - 24' STANDARD STRUCTURE.
SHEET No. 3 - STRUCTURE.
SHEET No. 4 - SB. No. 2 STANDARD DETAILS.
SHEET No. 5 - SB. No. 3 STANDARD CABLE RAIL.
SHEET No. 6 - S. No. 19 STANDARD STRUCTURES.

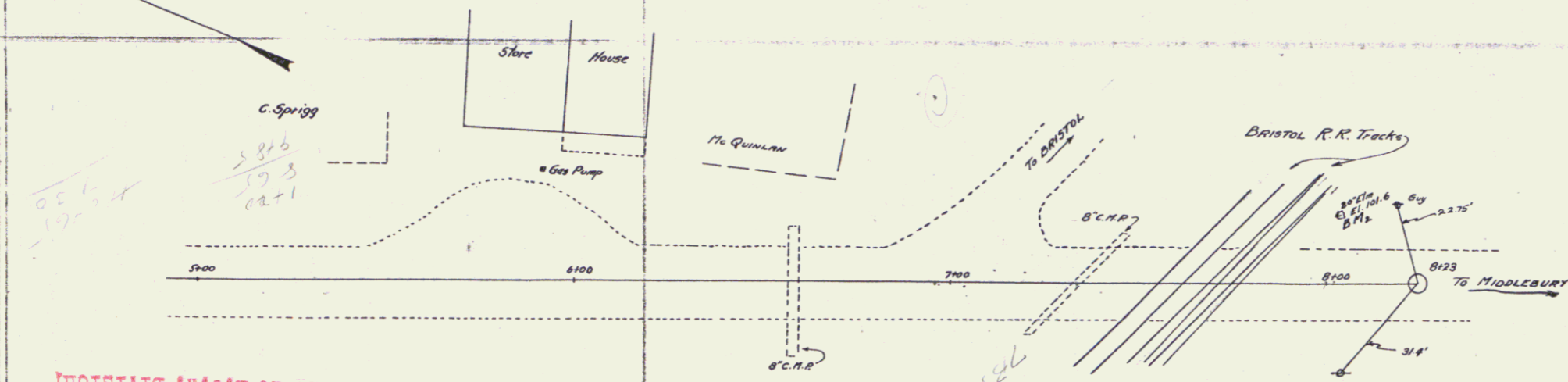
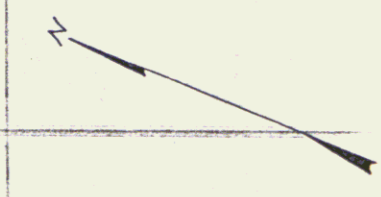
SUMMARY OF QUANTITIES
COMMON EXCAVATION INCLUDING BORROW 25 Cu. Yds.
STRUCTURE EXCAVATION 90 Cu. Yds.
GRAVEL SURFACE COURSE 20 Cu. Yds.
CONCRETE CLASS A (1:2:4) 79 Cu. Yds.
REINFORCING STEEL 8449 LBS.
CABLE GUARD RAIL 136 Lin. Ft.
TEMPORARY BRIDGE 1 Lump Sum



Correct - A. B. Bishop
Bridge Engineer
Approved - March 11, 1929
H. E. Sargent
Chief Engineer

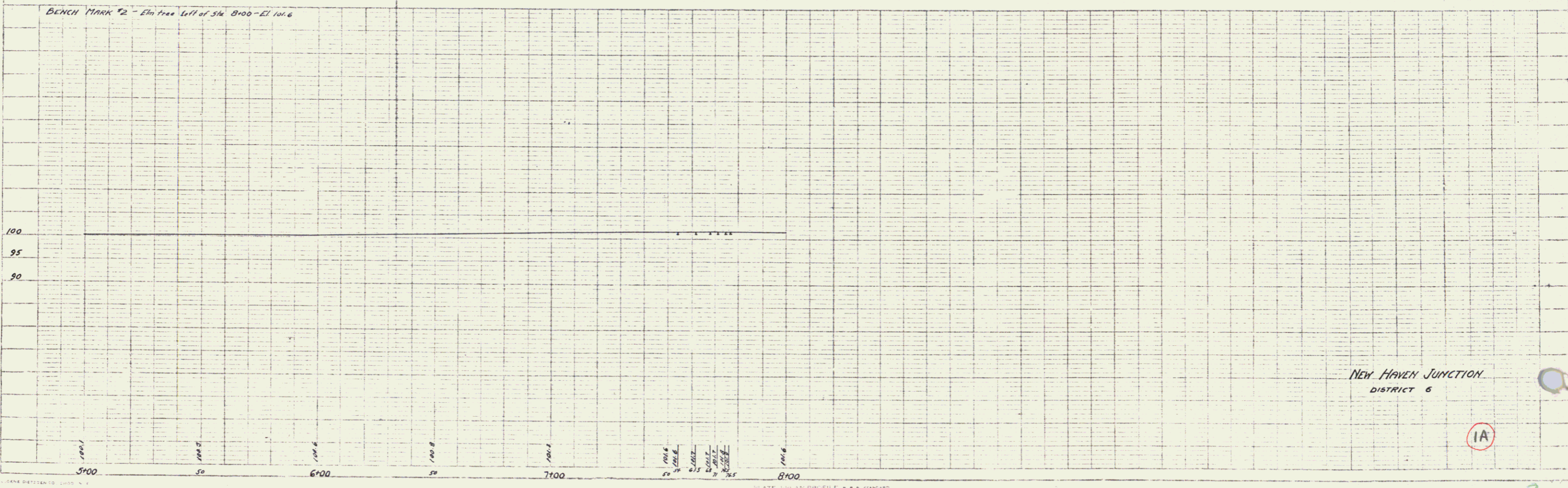
Route 1157
Pin # 99R455
Date: 03/11/1929
NEW HAVEN JUNCTION
DISTRICT 6 PROJECT
STATE AID BRIDGE Act No. 41-1928
Sheet 6 of 6

DIST. # 5 PEARLS



(To Be Returned To R.O.W. Division)
 TOWN OF US 7
 PERPETUAL
 TOWN FILE
 RIGHT-OF-WAY DIVISION
 MP 5.27 - 5.48

BENCH MARK #2 - Elm tree left of Sta 8100 - El. 101.6



NEW HAVEN JUNCTION
DISTRICT 6

IA

2

PLAN
NOTE BOOK
NO.

DATE
BY
SCALE