

INDEX OF SHEETS

SHEET NO.	TITLE PAGE
1	2+3 TYPICAL CROSS-SECTIONS OF IMPROVEMENT
2	PLAN AND PROFILE STA. 5+00 TO STA. 11+00
3	PLAN AND PROFILE STA. 11+00 TO STA. 14+00
4	PLAN AND PROFILE STA. 14+00 TO STA. 17+00
5	PLAN AND PROFILE STA. 17+00 TO STA. 20+00
6	PLAN AND PROFILE STA. 20+00 TO STA. 22+00
7	PLAN AND PROFILE STA. 22+00 TO STA. 25+00
8	PLAN AND PROFILE STA. 25+00 TO STA. 28+00
9	PLAN AND PROFILE STA. 28+00 TO STA. 31+00
10	PLAN AND PROFILE STA. 31+00 TO STA. 34+00
11	PLAN AND PROFILE STA. 34+00 TO STA. 37+00
12	PLAN AND PROFILE STA. 37+00 TO STA. 40+00
13	PLAN AND PROFILE STA. 40+00 TO STA. 43+00
14	PLAN AND PROFILE STA. 43+00 TO STA. 46+00
15	CROSS SECTIONS

STATE OF VERMONT  
STATE HIGHWAY DEPARTMENT

PLAN AND PROFILE OF PROPOSED  
STATE HIGHWAY  
FEDERAL AID PROJECT

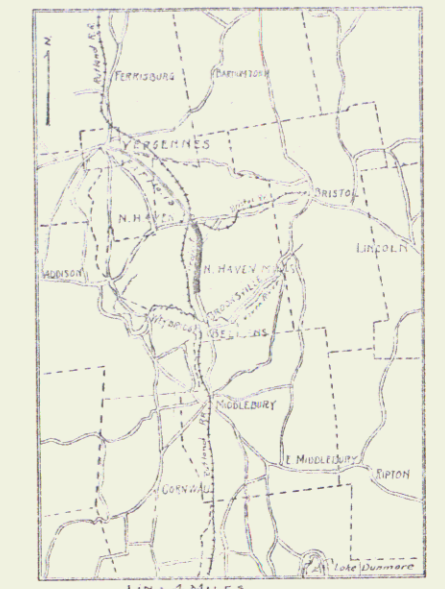
TOWN OF NEW-HAVEN

MIDDLEBURY-VERGENNES ROAD.

BEGINNING 6200 FT. NORTH OF WOODEN BRIDGE  
OVER NEW-HAVEN RIVER AND EXTENDING  
TO 1159 FT. SOUTH OF F.A.P. 13.

Pin # 99R451

PLAN 1/4" = 50 FT.  
VERT. PROFILE 1/8" = 10 FT.  
CROSS SECTIONS 1/4" = 8 FT.



RIGHT-OF-WAY DIVISION  
TOWN FILE

PERPETUAL  
Town of 057

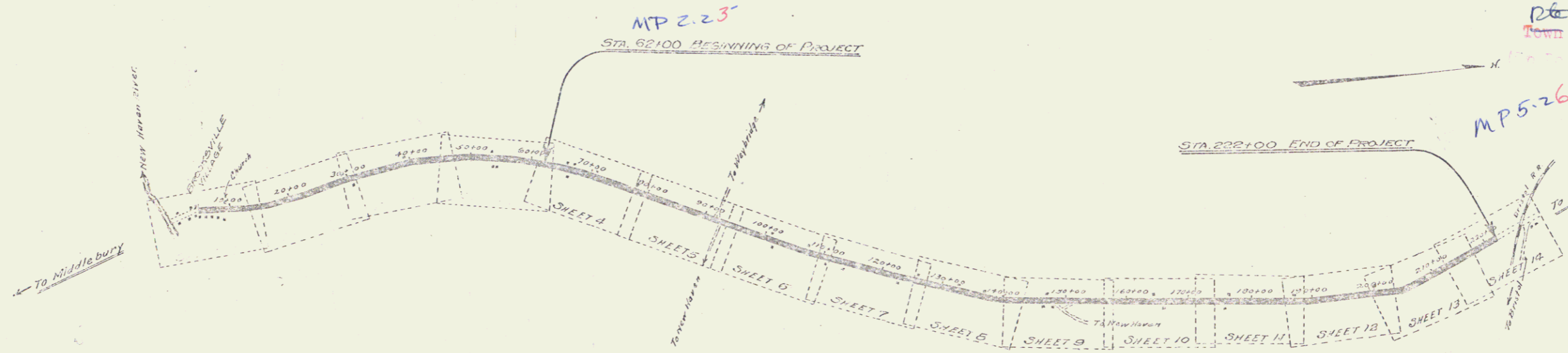
MP 5-26

Sheet 8-9 missing  
Sta 126-157

APPROVED: MARCH 12 1926  
SUBMITTED BY ORDER OF THE STATE HIGHWAY BOARD  
MARCH 12 1926

Proj # F 62B

RECOMMENDED BY DISTRICT ENGINEER  
RECOMMENDED FOR APPROVAL BY BUREAU OF PUBLIC WORKS  
APPROVED BY DIRECTOR GENERAL OF PUBLIC WORKS

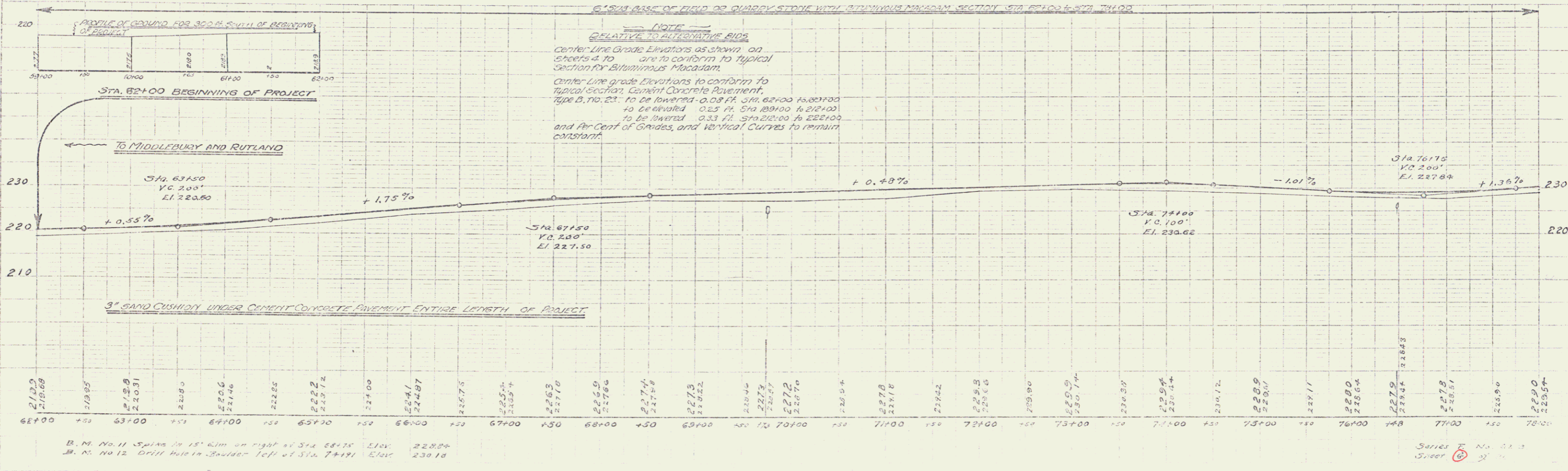
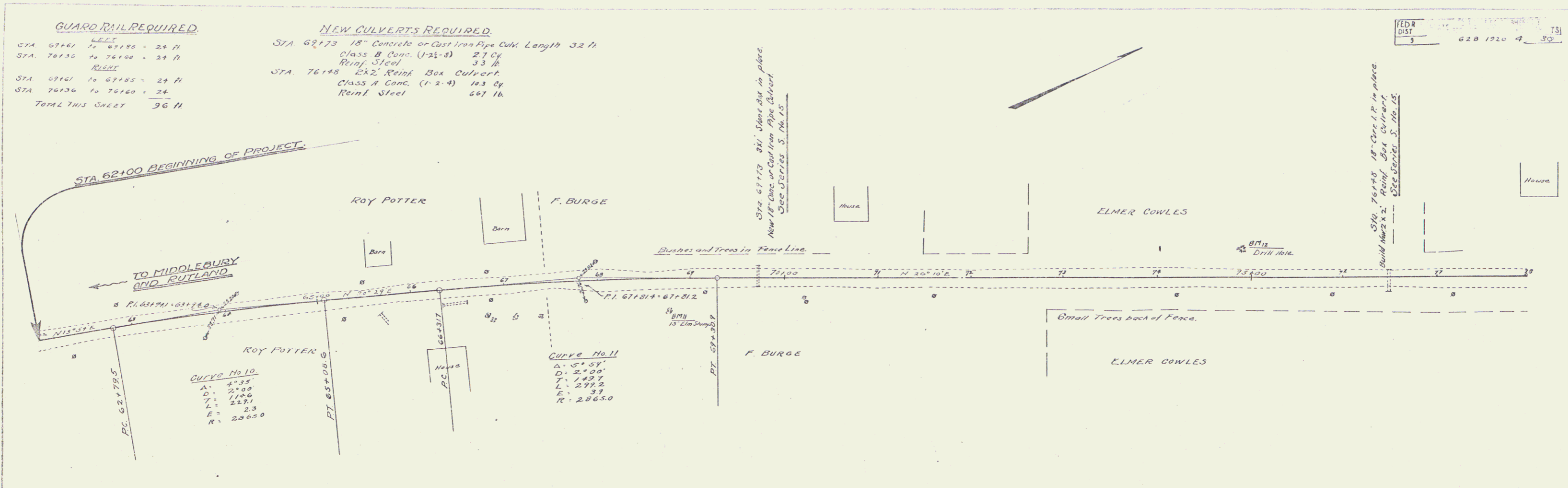


CONVENTIONAL SIGNS

COUNTY LINE	-----	GROUND ELEVATION	DATUM	1926
TOWN LINE	-----	GRADE ELEVATION	1926	1926
FENCE LINE	-----			
STONE WALL	-----			
UNFENCED PROPERTY	-----			
CHAD RAIL	-----			
TRAVELED WAY	-----			
RAILROAD	-----			
RETAINING WALL	-----			
CENTERLINE	-----			
SURVEY LINE	-----			
CULVERT	-----			
GOOD INLET	-----			
TROWLEY POLE	-----			
POWER POLE	-----			
TELEPHONE POLE	-----			
TREES	-----			
HEDGE	-----			

DEFLECTION ANGLE	Δ
DEGREE OF CURVE	D.
RADIUS OF CURVE	R.
TANGENT DISTANCE	T.
LENGTH OF CURVE	L.
EXTERNAL DISTANCE	E.
POINT OF INTERSECTION	P.I.
POINT OF CURVE	P.C.
POINT OF TANGENT	P.T.

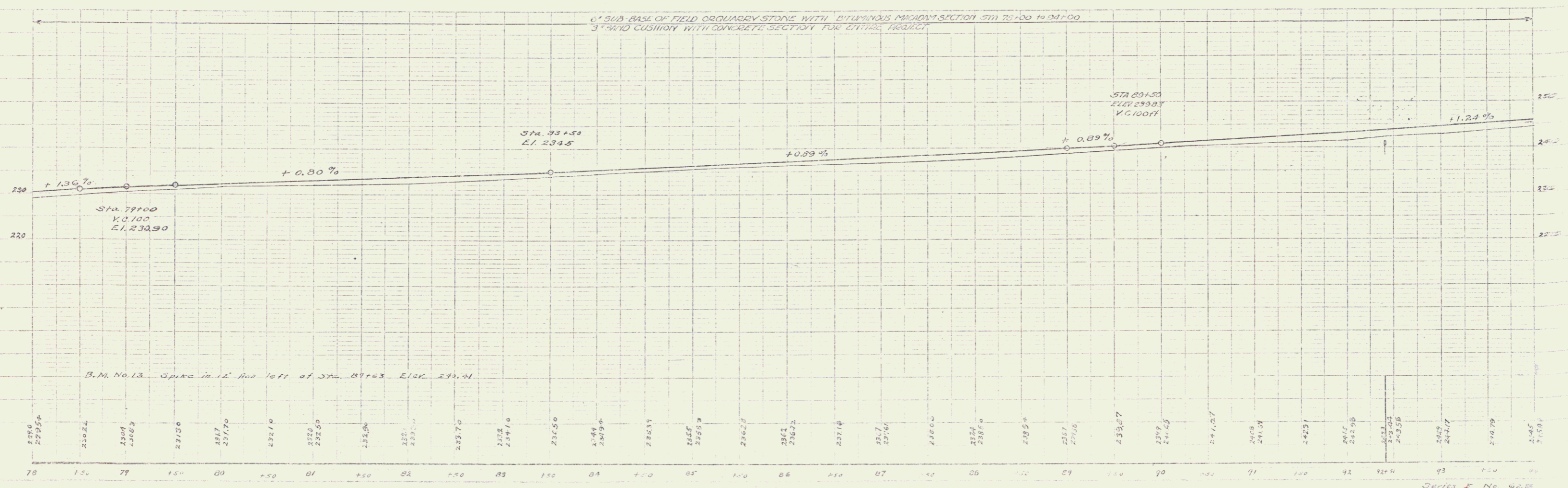
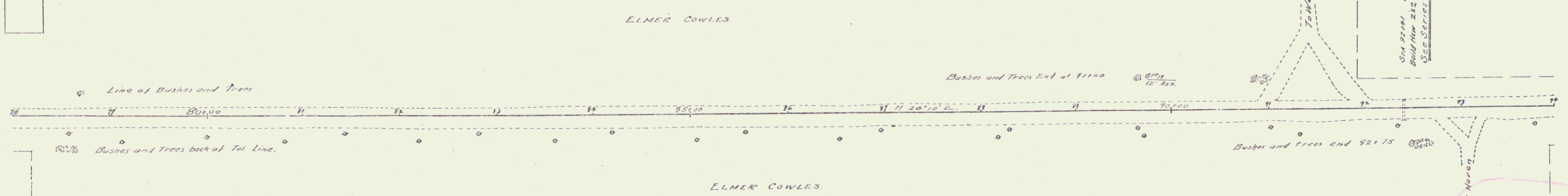
LAY OUT  
1/4" = 100 FT.



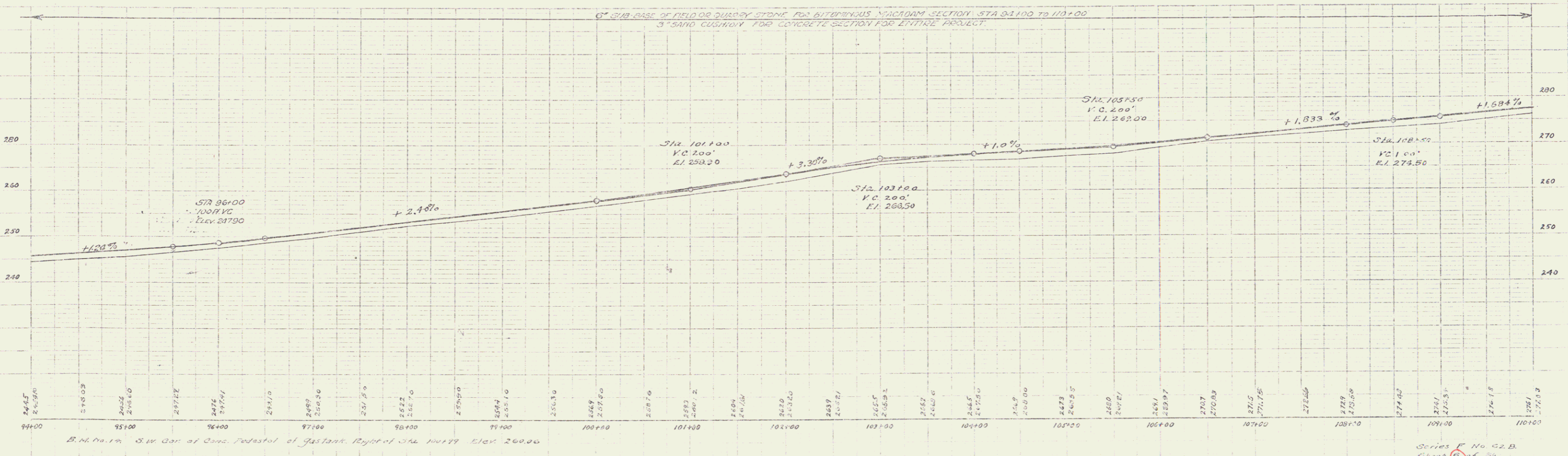
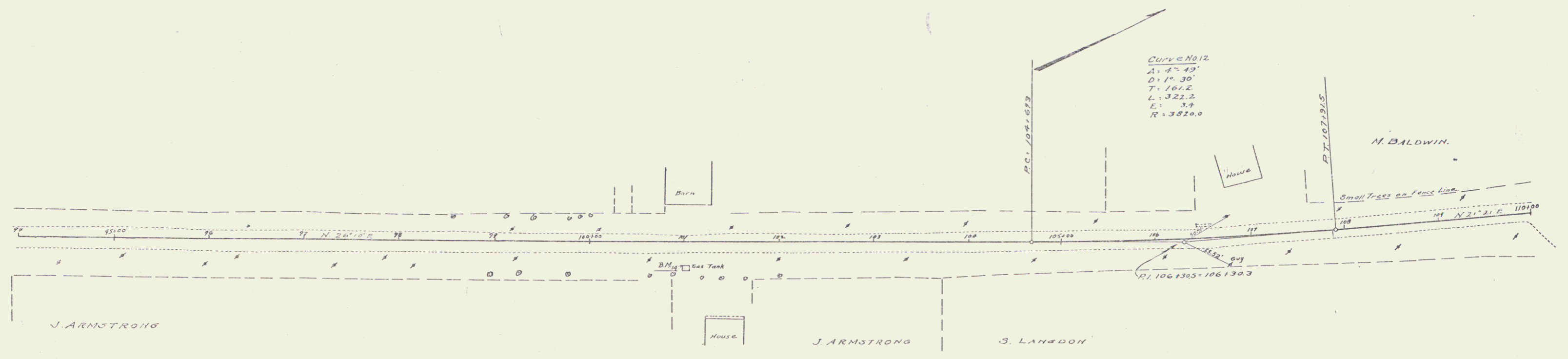
**GUARD RAIL REQUIRED**  
 LEFT  
 STA 92125 TO 92153 = 28 FT  
 RIGHT  
 STA 92125 TO 92153 = 28 FT  
 TOTAL THIS STREET = 56 FT

**NEW CULVERTS REQUIRED.**  
 STA 92141 2x2 Reinf. Box Culvert  
 CLASS A CONC. (1-2-4) 181 CY  
 Reinf. Steel 656 LB.

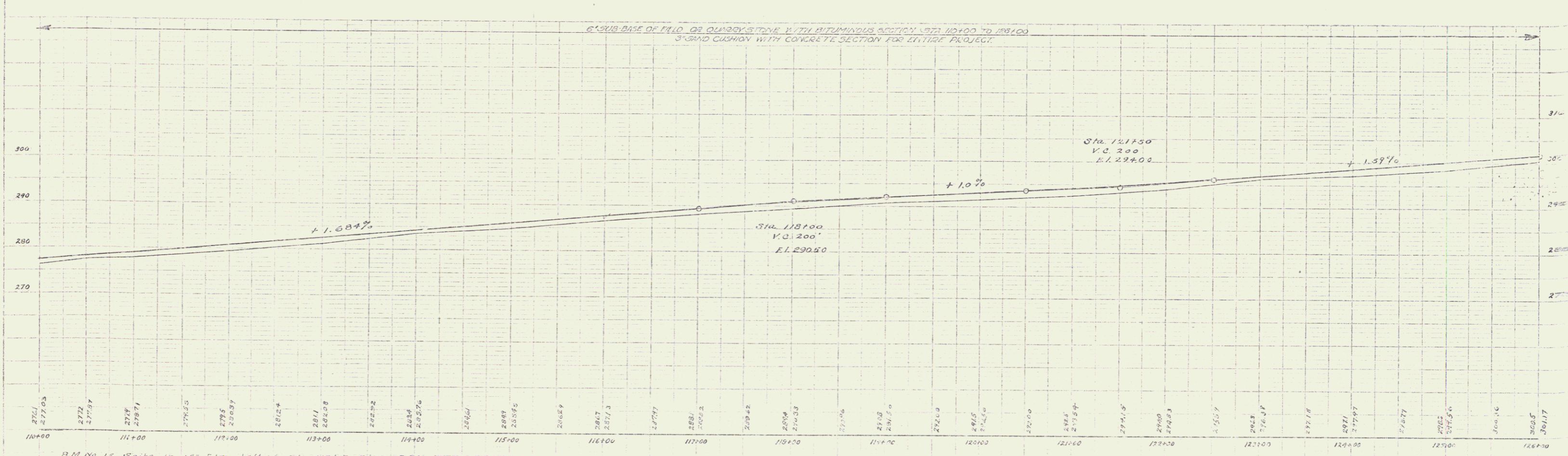
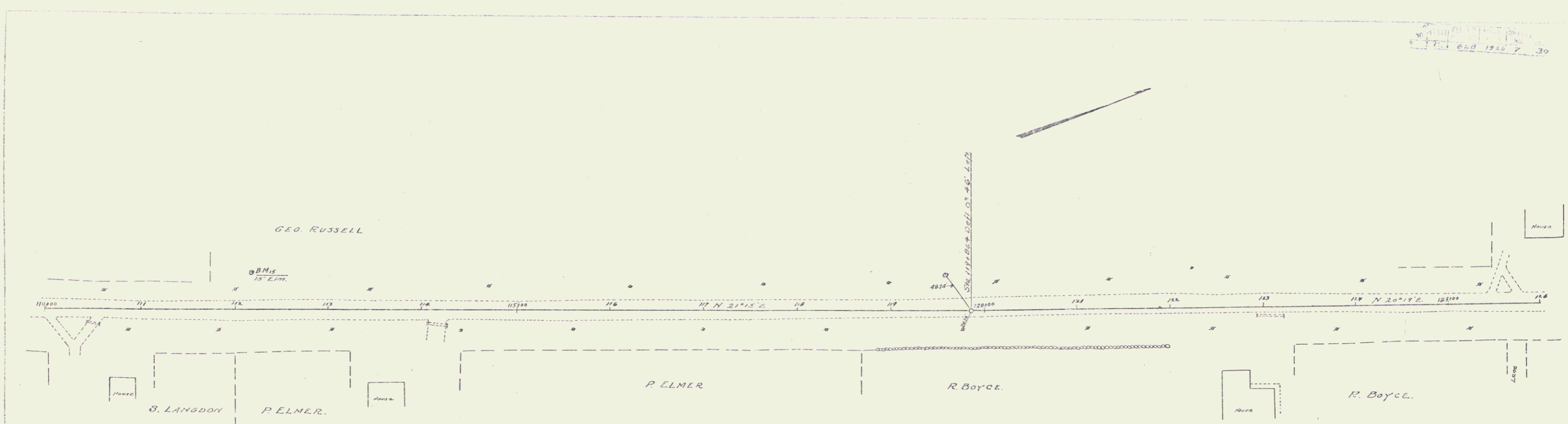
FIG NO	FED AID	TOTAL
5	62.0	67.0



Series No. 628  
 Sheet 3 of 30



620 1910 7 30



110+00  
 111+00  
 112+00  
 113+00  
 114+00  
 115+00  
 116+00  
 117+00  
 118+00  
 119+00  
 120+00  
 121+00  
 122+00  
 123+00  
 124+00  
 125+00  
 126+00

270  
 280  
 290  
 300  
 310

B.M. No 15 Spike in 18" Elm. Left of Sta. 112+77 Elev. 260.10

Sheet No. 620 of 20

5

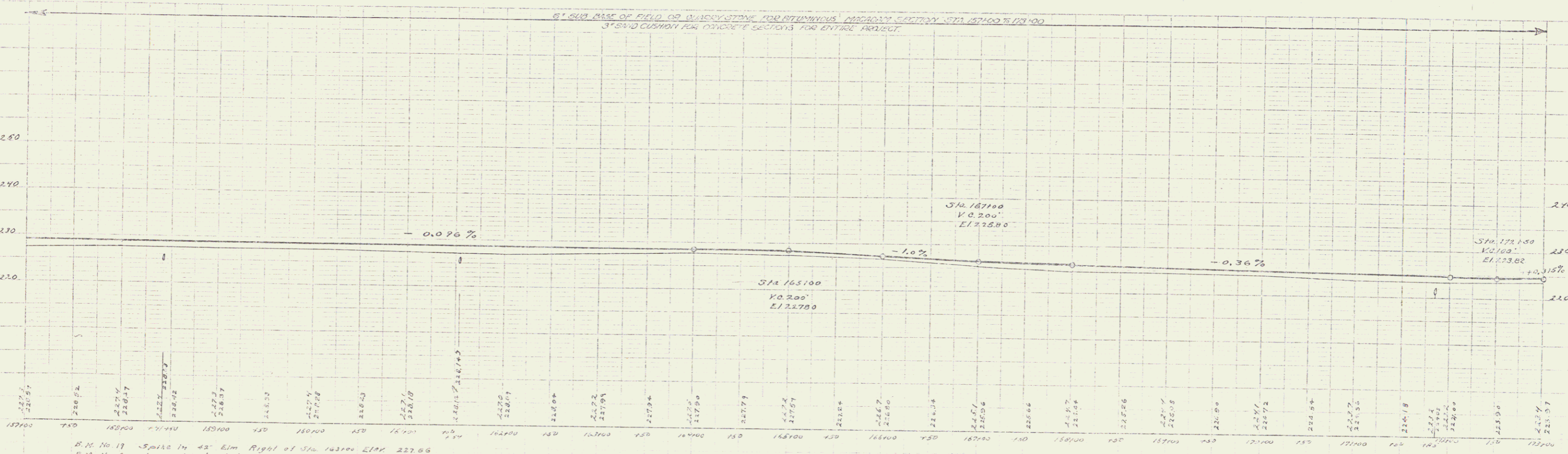
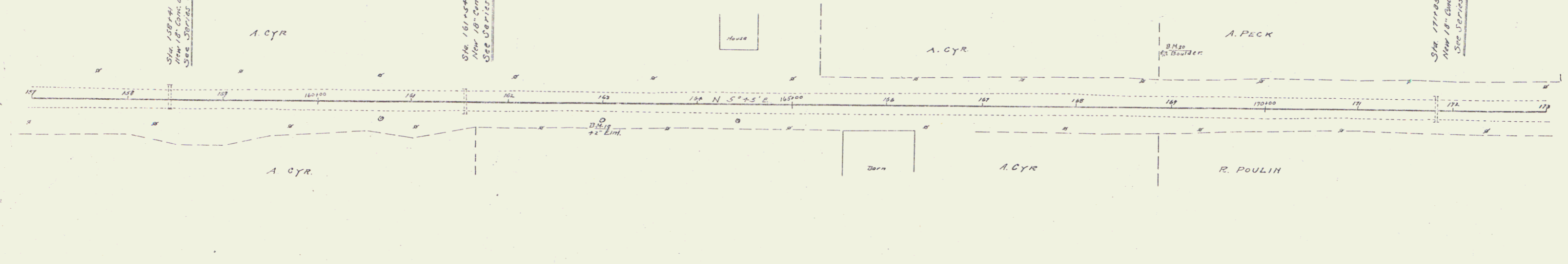
**GUARD RAIL REQUIRED**  
**LEFT**  
 STA 158129 to 158133 = 24 ft  
 " 161182 to 161186 = 24 ft  
 " 171173 to 171177 = 24 ft  
**RIGHT**  
 STA 158129 to 158133 = 24 ft  
 " 161182 to 161186 = 24 ft  
 " 171173 to 171177 = 24 ft  
 TOTAL THIS SHEET 144 ft

**NEW CULVERTS REQUIRED**  
 STA 158141 18" Concrete or Cast Iron Pipe Culvert Length 32 ft  
 Class B Conc. (1-3 1/2") 2.7 Cy  
 Reinf Steel 33 lb  
 STA 161154 18" Concrete or Cast Iron Pipe Culvert Length 32 ft  
 Class B Conc. (1-3 1/2") 2.7 Cy  
 Reinf Steel 33 lb  
 STA 171185 18" Concrete or Cast Iron Pipe Culvert Length 32 ft  
 Class B Conc. (1-3 1/2") 2.7 Cy  
 Reinf Steel 33 lb

Sta 158141 18" Iron Pipe cul in place  
 New 18" Conc or Cast Iron Pipe Culvert  
 See District 3, No. 15

Sta 161154 18" Iron Pipe cul in place  
 New 18" Conc or Cast Iron Pipe Culvert  
 See District 3, No. 15

Sta 171185 18" Iron Pipe cul in place  
 New 18" Conc or Cast Iron Pipe Culvert  
 See District 3, No. 15



B.M. No. 17 - Spike in 45 Elm Right of Sta 163100 Elev 227.86  
 B.M. No. 20 - Large Boulder left of Sta 168151 Elev 228.12

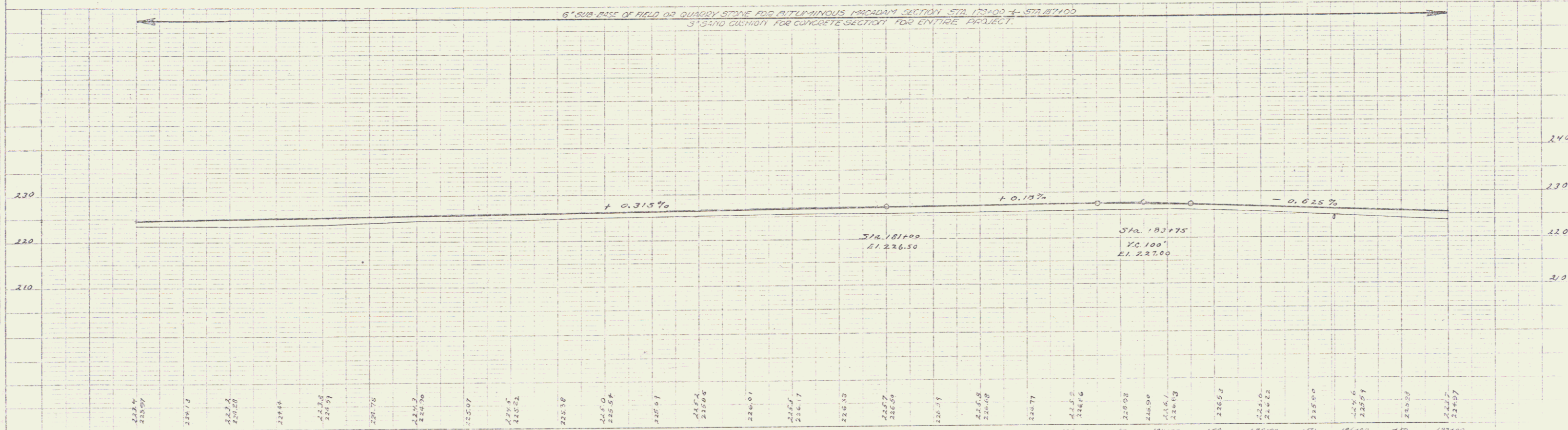
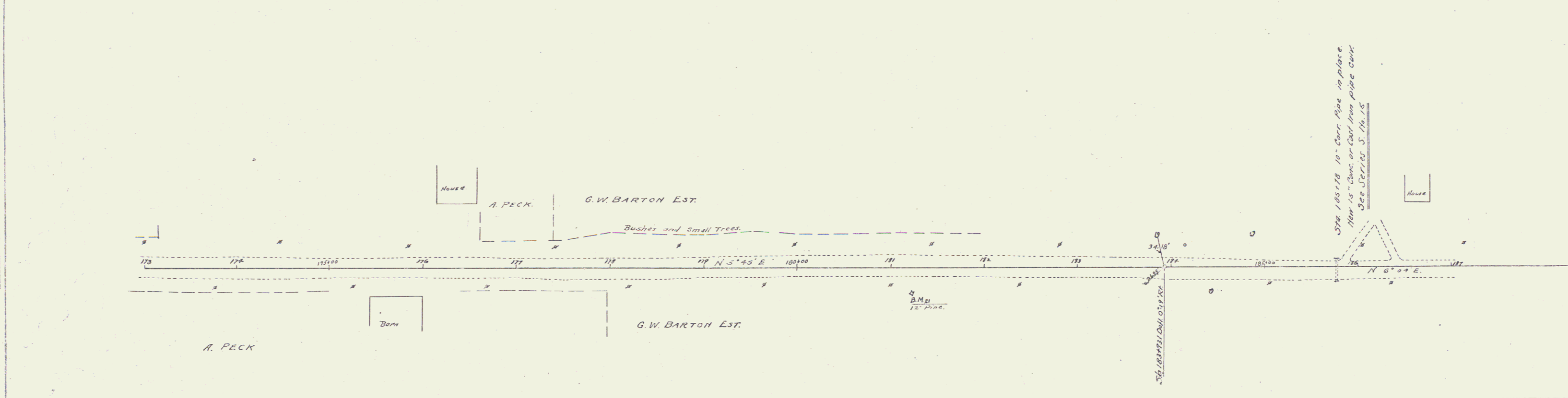
Series E No. 15  
 Sheet 10 of 20

**GUARD RAIL REQUIRED**  
 LEFT  
 STA. 185+66 TO 185+70 = 24 ft.  
 RIGHT  
 STA. 185+66 TO 185+70 = 24 ft.  
 TOTAL THIS SHEET 48 ft.

**NEW CULVERTS REQUIRED**  
 STA. 185+70 15" Concrete or Cast Iron Pipe Culvert Length 32 ft.  
 Class B Conc. (1-2 1/2") 21 Cy  
 Reinf Steel 33 lb.

1	2	3	4	5	6	7	8	9	10
1	2	3	4	5	6	7	8	9	10

DATE: \_\_\_\_\_  
 DRAWN BY: \_\_\_\_\_  
 CHECKED BY: \_\_\_\_\_  
 PROJECT: \_\_\_\_\_



B.M. No. 21 Solar in 12" Pipe Right of Sta. 181+21 Elev. 226.48

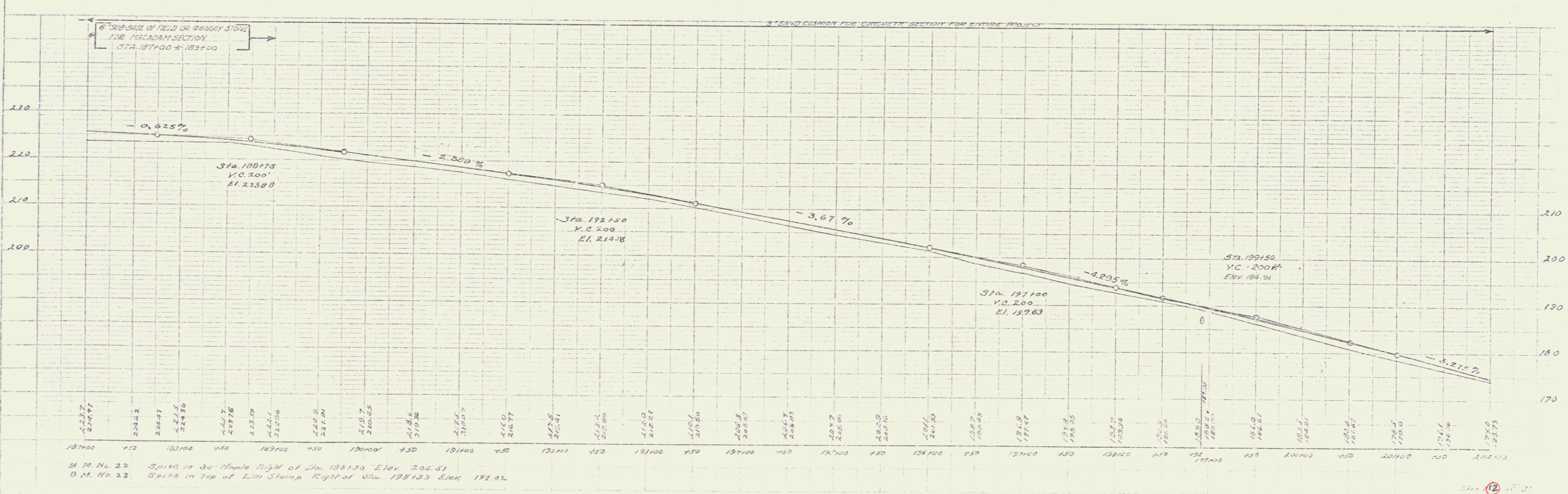
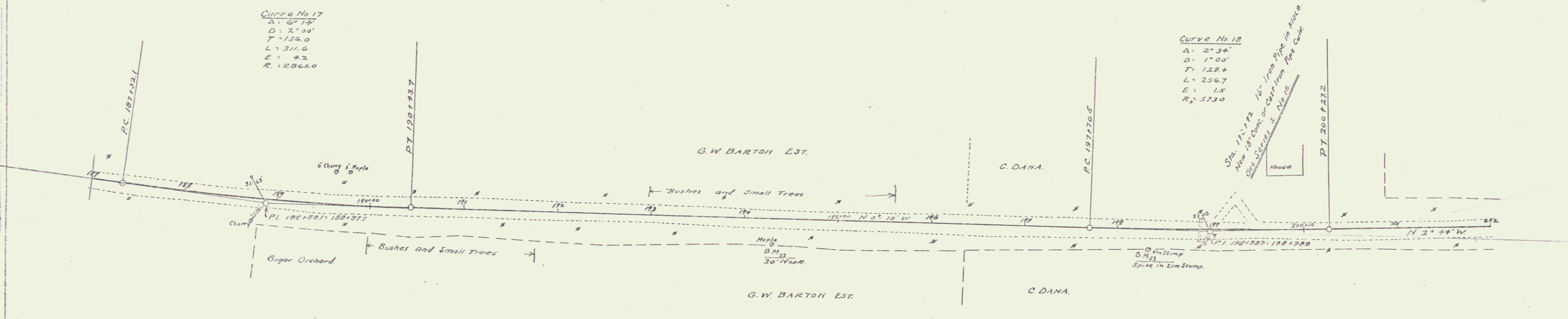
Series No. 82B  
 Sheet 11 of 57

7

**GUARD RAIL REQUIRED**  
 STA. 198+00 **LEFT**  
 To 199+00 = 24 ft  
 STA. 198+00 **RIGHT**  
 To 199+00 = 24 ft  
 TOTAL THIS SHEET 48 ft.

**NEW CONCRETE REQUIRED**  
 STA. 198+72 18" Concrete or Cast Iron Pipe Culvert Length 32 ft.  
 Class B Conc. (1-2 1/2") 27 cu  
 Reinf. Steel 33 lb

DATE	NO.	BY	REVISION
1920	1	W. H. B.	PLAN
1920	2	W. H. B.	CONTRACT
1920	3	W. H. B.	REVISION
1920	4	W. H. B.	REVISION
1920	5	W. H. B.	REVISION
1920	6	W. H. B.	REVISION
1920	7	W. H. B.	REVISION
1920	8	W. H. B.	REVISION
1920	9	W. H. B.	REVISION
1920	10	W. H. B.	REVISION
1920	11	W. H. B.	REVISION
1920	12	W. H. B.	REVISION
1920	13	W. H. B.	REVISION
1920	14	W. H. B.	REVISION
1920	15	W. H. B.	REVISION
1920	16	W. H. B.	REVISION
1920	17	W. H. B.	REVISION
1920	18	W. H. B.	REVISION
1920	19	W. H. B.	REVISION
1920	20	W. H. B.	REVISION



1920

PLAN  
 1/2" = 100'  
 1/4" = 200'  
 1/8" = 400'  
 1/16" = 800'  
 1/32" = 1600'  
 1/64" = 3200'  
 1/128" = 6400'  
 1/256" = 12800'  
 1/512" = 25600'  
 1/1024" = 51200'  
 1/2048" = 102400'  
 1/4096" = 204800'  
 1/8192" = 409600'  
 1/16384" = 819200'  
 1/32768" = 1638400'  
 1/65536" = 3276800'  
 1/131072" = 6553600'  
 1/262144" = 13107200'  
 1/524288" = 26214400'  
 1/1048576" = 52428800'  
 1/2097152" = 104857600'  
 1/4194304" = 209715200'  
 1/8388608" = 419430400'  
 1/16777216" = 838860800'  
 1/33554432" = 1677721600'  
 1/67108864" = 3355443200'  
 1/134217728" = 6710886400'  
 1/268435456" = 13421772800'  
 1/536870912" = 26843545600'  
 1/1073741824" = 53687091200'  
 1/2147483648" = 107374182400'  
 1/4294967296" = 214748364800'  
 1/8589934592" = 429496729600'  
 1/17179869184" = 858993459200'  
 1/34359738368" = 1717986918400'  
 1/68719476736" = 3435973836800'  
 1/137438953472" = 6871947673600'  
 1/274877906944" = 13743895347200'  
 1/549755813888" = 27487790694400'  
 1/1099511627776" = 54975581388800'  
 1/2199023255552" = 109951162777600'  
 1/4398046511104" = 219902325555200'  
 1/8796093022208" = 439804651110400'  
 1/17592186044416" = 879609302220800'  
 1/35184372088832" = 1759218604441600'  
 1/70368744177664" = 3518437208883200'  
 1/140737488355328" = 7036874417766400'  
 1/281474976710656" = 14073748835532800'  
 1/562949953421312" = 28147497671065600'  
 1/1125899906842624" = 56294995342131200'  
 1/2251799813685248" = 112589990684262400'  
 1/4503599627370496" = 225179981368524800'  
 1/9007199254740992" = 450359962737049600'  
 1/18014398509481984" = 900719925474099200'  
 1/36028797018963968" = 1801439850948198400'  
 1/72057594037927936" = 3602879701896396800'  
 1/144115188075855872" = 7205759403792793600'  
 1/288230376151711744" = 14411518807585587200'  
 1/576460752303423488" = 28823037615171174400'  
 1/1152921504606846976" = 57646075230342348800'  
 1/2305843009213693952" = 115292150460684697600'  
 1/4611686018427387904" = 230584300921369395200'  
 1/9223372036854775808" = 461168601842738790400'  
 1/18446744073709551616" = 922337203685477580800'  
 1/36893488147419103232" = 1844674407370955161600'  
 1/73786976294838206464" = 3689348814741910323200'  
 1/147573952589676412928" = 7378697629483820646400'  
 1/295147905179352825856" = 14757395258967641292800'  
 1/590295810358705651712" = 29514790517935282585600'  
 1/1180591620717411303424" = 59029581035870565171200'  
 1/2361183241434822606848" = 118059162071741130342400'  
 1/4722366482869645213696" = 236118324143482260684800'  
 1/9444732965739290427392" = 472236648286964521369600'  
 1/18889465931478580854784" = 944473296573929042739200'  
 1/37778931862957161709568" = 1888946593147858085478400'  
 1/75557863725914323419136" = 3777893186295716170956800'  
 1/151115727451828646838272" = 7555786372591432341913600'  
 1/302231454903657293676544" = 15111572745182864683827200'  
 1/604462909807314587353088" = 30223145490365729367654400'  
 1/1208925819614629174706176" = 60446290980731458735308800'  
 1/2417851639229258349412352" = 120892581961462917470617600'  
 1/4835703278458516698824704" = 241785163922925834941235200'  
 1/9671406556917033397649408" = 483570327845851669882470400'  
 1/19342813113834066795298816" = 967140655691703339764940800'  
 1/38685626227668133590597632" = 1934281311383406679529881600'  
 1/77371252455336267181195264" = 3868562622766813359059763200'  
 1/154742504910672534362390528" = 7737125245533626718119526400'  
 1/309485009821345068724781056" = 15474250491067253436239052800'  
 1/618970019642690137449562112" = 30948500982134506872478105600'  
 1/1237940039285380274899124224" = 61897001964269013744956211200'  
 1/2475880078570760549798248448" = 123794003928538027489912422400'  
 1/4951760157141521099596496896" = 247588007857076054979824844800'  
 1/9903520314283042199192993792" = 495176015714152109959649689600'  
 1/19807040628566084398385987584" = 990352031428304219919299379200'  
 1/39614081257132168796771975168" = 1980704062856608439838598758400'  
 1/79228162514264337593543950336" = 3961408125713216879677197516800'  
 1/158456325028528675187087900672" = 7922816251426433759354395033600'  
 1/316912650057057350374175801344" = 15845632502852867518708790067200'  
 1/633825300114114700748351602688" = 31691265005705735037417580134400'  
 1/1267650600228229401496703205376" = 63382530011411470074835160268800'  
 1/2535301200456458802993406410752" = 126765060022822940149670320537600'  
 1/5070602400912917605986812821504" = 253530120045645880299340641075200'  
 1/10141204801825835211973625643008" = 507060240091291760598681282150400'  
 1/20282409603651670423947251286016" = 1014120480182583521197362564300800'  
 1/40564819207303340847894502572032" = 2028240960365167042394725128601600'  
 1/81129638414606681695789005144064" = 4056481920730334084789450257203200'  
 1/162259276832213363391578010288128" = 8112963841460668169578900514406400'  
 1/324518553664426726783156020576256" = 16225927683221336339157801028812800'  
 1/649037107328853453566312041152512" = 32451855366442672678315602057625600'  
 1/1298074214577106907132624822305024" = 64903710732885345356631204115251200'  
 1/2596148429154213814265249644610048" = 129807421457710690713262482230502400'  
 1/5192296858308427628530499289220096" = 259614842915421381426524964461004800'  
 1/1038459371661685525706099857840192" = 519229685830842762853049928922009600'  
 1/2076918743323371051412199715560384" = 103845937166168552570609985784019200'  
 1/4153837486646742102824398311120768" = 207691874332337105141219971556038400'  
 1/8307674973293484205648796622241536" = 415383748664674210282439831112076800'  
 1/16615349946586968411297593244482072" = 830767497329348420564879662224153600'  
 1/33230699893173936822595184888964144" = 1661534994658696841129759324448207200'  
 1/6646139978634787364519036977792288" = 3323069989317393682259518488896414400'  
 1/13292279957269574729038073955584576" = 664613997863478736451903697779228800'  
 1/26584559914539149458076147911169152" = 1329227995726957472903807395558457600'  
 1/53169119829078298916152295822338304" = 2658455991453914945807614791116915200'  
 1/106338239658156597832304591644676608" = 5316911982907829891615229582233830400'  
 1/212676479316313195664609183289353216" = 10633823965815659783230459164467660800'  
 1/425352958632626391329218366578706432" = 21267647931631319566460918328935321600'  
 1/850705917265252782658436733157412864" = 42535295863262639132921836657870643200'  
 1/1701411834530505565316873466314825728" = 85070591726525278265843673315741286400'  
 1/3402823669061011130633746932629651552" = 170141183453050556531687346631482572800'  
 1/6805647338122022261267483865259303104" = 340282366906101113063374693262965155200'  
 1/1361129467624404452253496773051860608" = 680564733812202226126748386525930310400'  
 1/2722258935248808904506993546103721216" = 136112946762440445225349677305186060800'  
 1/5444517870497617809013987092207442432" = 272225893524880890450699354610372121600'  
 1/10889035740995235618027974184414884864" = 544451787049761780901398709220744243200'  
 1/21778071481990471236055948368829769728" = 1088903574099523561802797418441488486400'  
 1/43556142963980942472111896737659539456" = 2177807148199047123605594836882976972800'  
 1/87112285927961884944223793475319078912" = 4355614296398094247211189673765953945600'  
 1/174224571855923769888447586950638157824" = 8711228592796188494422379347531907891200'  
 1/348449143711847539776895173901276315648" = 17422457185592376988844758695063815782400'  
 1/69689828742369507955379034780255263296" = 34844914371184753977689517390127631564800'  
 1/139379657484739015910758069560510526592" = 6968982874236950795537903478025526329600'  
 1/278759314969478031821516139121021053184" = 13937965748473901591075806956051052659200'  
 1/557518629938956063643032278242042106368" = 27875931496947803182151613912102105318400'  
 1/1115037259877912127286064556484084212736" = 55751862993895606364303227824204210636800'  
 1/22300745197558242545721291129681684425472" = 111503725987791212728606455648408421273600'  
 1/4460149039511648509144258259376336889888" = 2230074519755824254572129112968168442547200'  
 1/8920298079023297018288516518752737779776" = 446014903951164850914425825937633688988800'  
 1/17840596158046594036577033037505475559552" = 892029807902329701828851651875273777977600'  
 1/356811923160931880731540660750109511119104" = 1784059615804659403657703303750547555955200'  
 1/713623846321863761463081321500219022238208" = 35681192316093188073154066075010951111910400'  
 1/1427247692643727522926162643004380444476416" = 71362384632186376146308132150021902223820800'  
 1/2854495385287455045852325286008760888952832" = 142724769264372752292616264300438044447641600'  
 1/5708990770574910091704650572017521777905664" = 285449538528745504585232528600876088895283200'  
 1/114179815411498201834093011440344355558112" = 570899077057491009170465057201752177790566400'  
 1/228359630822996403668186022880688711116224" = 11417981541149820183409301144034435555811200'  
 1/45671926164599280733637204576137542222448" = 22835963082299640366818602288068871111622400'  
 1/91343852329198561467274409152275084444496" = 4567192616459928073363720457613754222244800'  
 1/18268770465839712293454881830455016888896" = 9134385232919856146727440915227508444449600'  
 1/36537540931679424586909763660910373777792" = 1826877046583971229345488183045501688889600'  
 1/73075081863358849173819527321820747555584" = 3653754093167942458690976366091037377779200'  
 1/14615016372671769834763905464364149111168" = 7307508186335884917381952732182074755558400'  
 1/29230032745343539669527810928728298222336" = 1461501637267176983476390546436414911116800'  
 1/58460065490687079339055621857456596444672" = 2923003274534353966952781092872829822233600'  
 1/116920130981374158678111243714913188889344" = 5846006549068707933905562185745659644467200'  
 1/23384026196274831735622248742922737777888" = 11692013098137415867811124371491318888934400'  
 1/46768052392549663471244497485845475555776" = 2338402619627483173562224874292273777788800'  
 1/93536104785099326942488994971691091111552" = 4676805239254966347124449748584547555577600'  
 1/18707220957019865388497798994338218222224" = 9353610478509932694248899497169109111155200'  
 1/37414441914039730776995597988676436444448" = 1870722095701986538849779899433821822222400'  
 1/74828883828079461553991195977352872888896" = 3741444191403973077699559798867643644444800'  
 1/14965776765615892310798239195505774577792" = 7482888382807946155399119597735287288889600'  
 1/29931553531231784621596473991001151555584" = 1496577676561589231079823919550577457779200'  
 1/59863107062463569243192947982002231111168" = 2993155353123178462159647399100115155558400'  
 1/11972621412492713848638589596400446222336" = 5986310706246356924319294798200223111116800'  
 1/23945242824985427697277179192800892444672" = 1197262141249271384863858959640044622233600'  
 1/47890485649970855394554358385601784889344" = 2394524282498542769727717919280089244467200'  
 1/9578097129994171078910871677120356977888" = 4789048564997085539455435838560178488934400'  
 1/19156194259988342157821743542407139555776" = 957809712999417107891087167712035697788800'  
 1/38312388519976684315643487084801429111552" = 1915619425998834215782174354240713955577600'  
 1/7662477703995336863128697416962858222224" = 3831238851997668431564348708480142911155200'  
 1/15324955407990673726257394833925716444448" = 766247770399533686312869741696285822222400'  
 1/3064991081598134745251478966785142888896" = 1532495540799067372625739483392571644444800'  
 1/6129982163196269490502957933570285777792" = 306499108159813474525147896678514288889600'  
 1/12259964326392538981005915867140571555584" = 612998216319626949050295793357028577779200'  
 1/2451992865278507796201183173428131111168" = 1225996432639253898100591586714057155558400'  
 1/4903985730557015592402366346856262222336" = 245199286527850779620118317342813111116800'  
 1/9807971461114031184804732693712524444672" = 490398573055701559240236634685626222233600'  
 1/1961594292222806369680946587545044889344" = 980797146111403118480473269371252444467200'  
 1/392318858444561273936189317509008977888" = 196159429222280636968094658754504

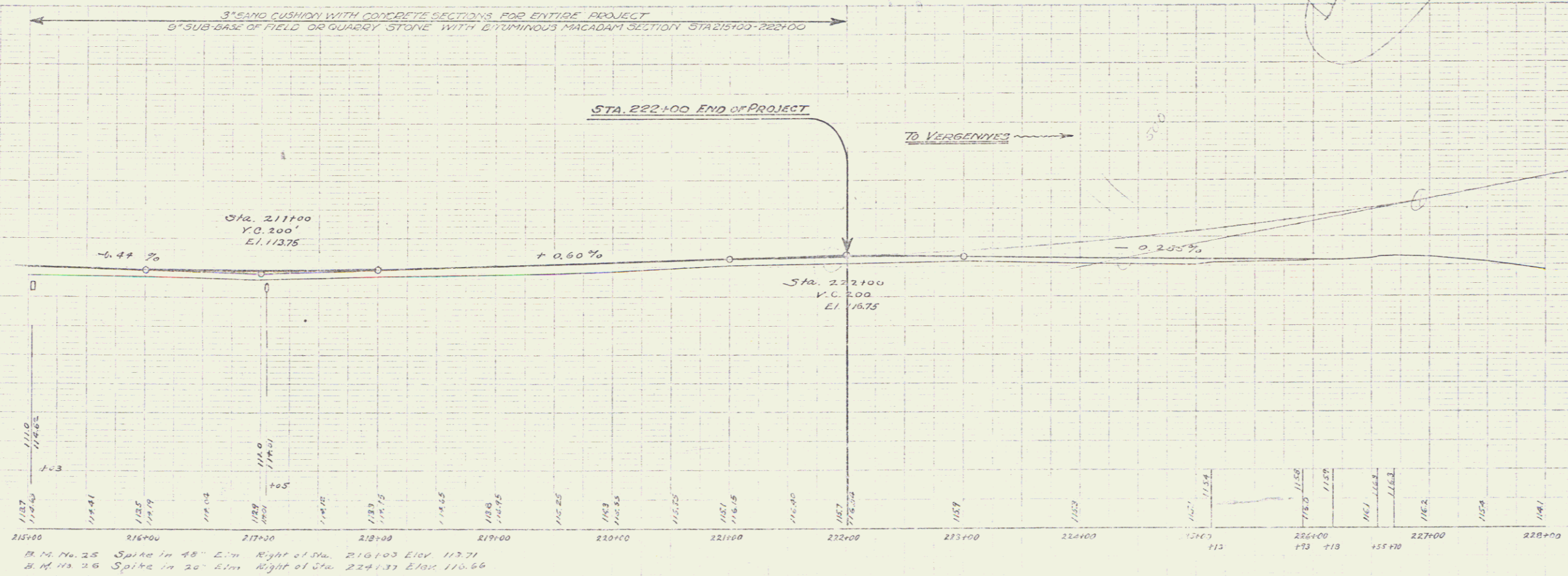
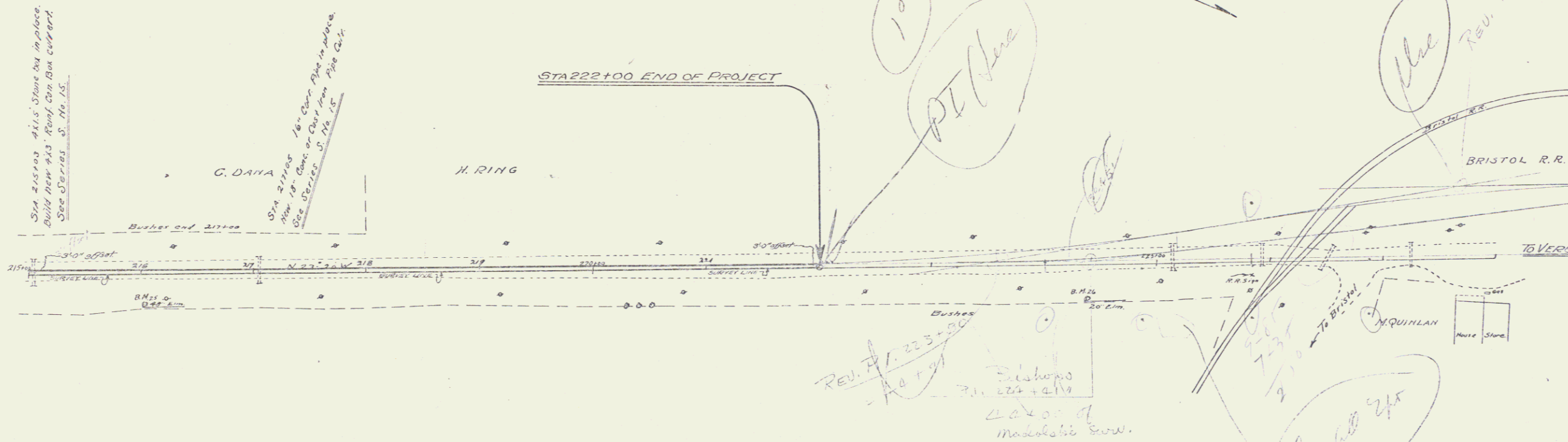
**GUARD RAIL REQUIRED**  
 LEFT  
 STA. 214171 to 215118 = 24 ft  
 " 216193 to 217117 = 27 "

**RIGHT**  
 STA. 214191 to 215115 = 24 ft  
 " 216199 to 217117 = 27 "

TOTAL THIS SHEET 96 ft

**NEW CULVERTS REQUIRED**  
 STA. 215103 4x3' Reinforced Concrete Box  
 Class A Conc. (1-2-4) 15 cy  
 Reinf. Steel 925 lb

STA. 217105 18" Conc. or Cast Iron Pipe Culv. Length 32 ft  
 Class & Conc. (1-2-4) 27 cy  
 Reinf. Steel 33 lb



B.M. No. 25 Spike in 40' Lim Right of Sta. 216103 Elev 117.71  
 B.M. No. 26 Spike in 20' Lim Right of Sta. 224131 Elev 116.66

SERIES # NO. 62B  
 SHEET 16 OF 30