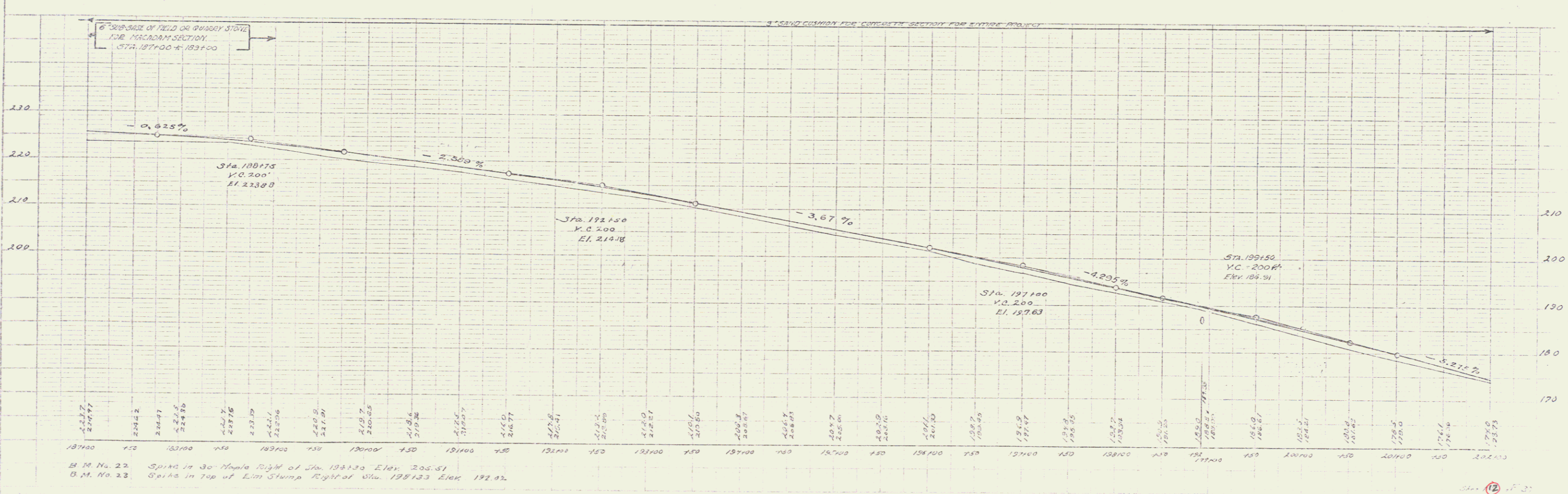
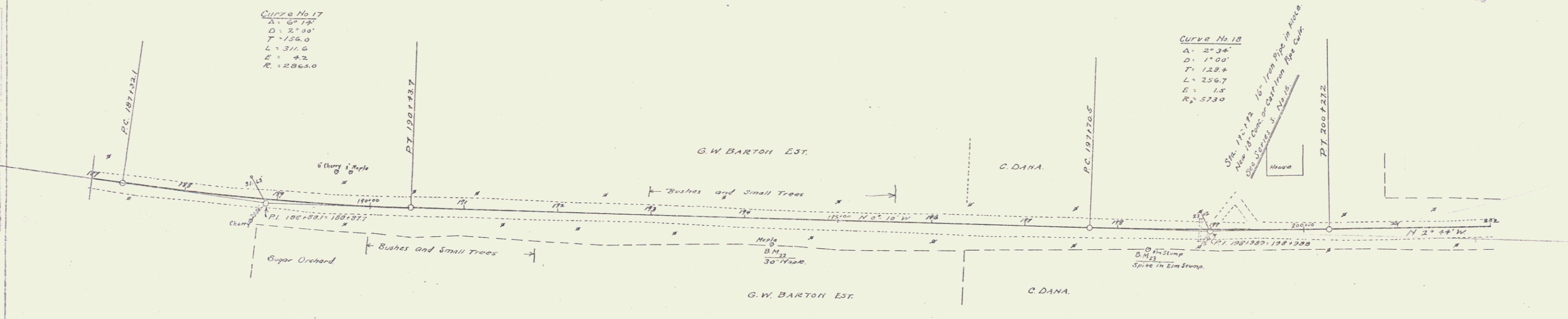


GUARD RAIL REQUIRED
 STA. 198+00 **LEFT**
 To 199+00 = 24 ft
 STA. 198+00 **RIGHT**
 To 199+00 = 24 ft
 TOTAL THIS SHEET 48 ft.

NEW CONCRETE REQUIRED
 STA. 198+72 18" Concrete or Cast Iron Pipe Culvert Length 32 ft.
 Class B Conc. (1-2 1/2") 27 cu
 Reinf. Steel 33 lb

DATE	NO.	BY	REVISION
1920	1	W. H. B.	1920
1921	2	W. H. B.	1921
1922	3	W. H. B.	1922
1923	4	W. H. B.	1923
1924	5	W. H. B.	1924
1925	6	W. H. B.	1925
1926	7	W. H. B.	1926
1927	8	W. H. B.	1927
1928	9	W. H. B.	1928
1929	10	W. H. B.	1929
1930	11	W. H. B.	1930
1931	12	W. H. B.	1931
1932	13	W. H. B.	1932
1933	14	W. H. B.	1933
1934	15	W. H. B.	1934
1935	16	W. H. B.	1935
1936	17	W. H. B.	1936
1937	18	W. H. B.	1937
1938	19	W. H. B.	1938
1939	20	W. H. B.	1939



B.M. No. 22 Spike in 30" Nail Right of Sta. 198+30 Elev. 205.51
 B.M. No. 23 Spike in Top of Elm Stump Right of Sta. 199+33 Elev. 192.92

1920