

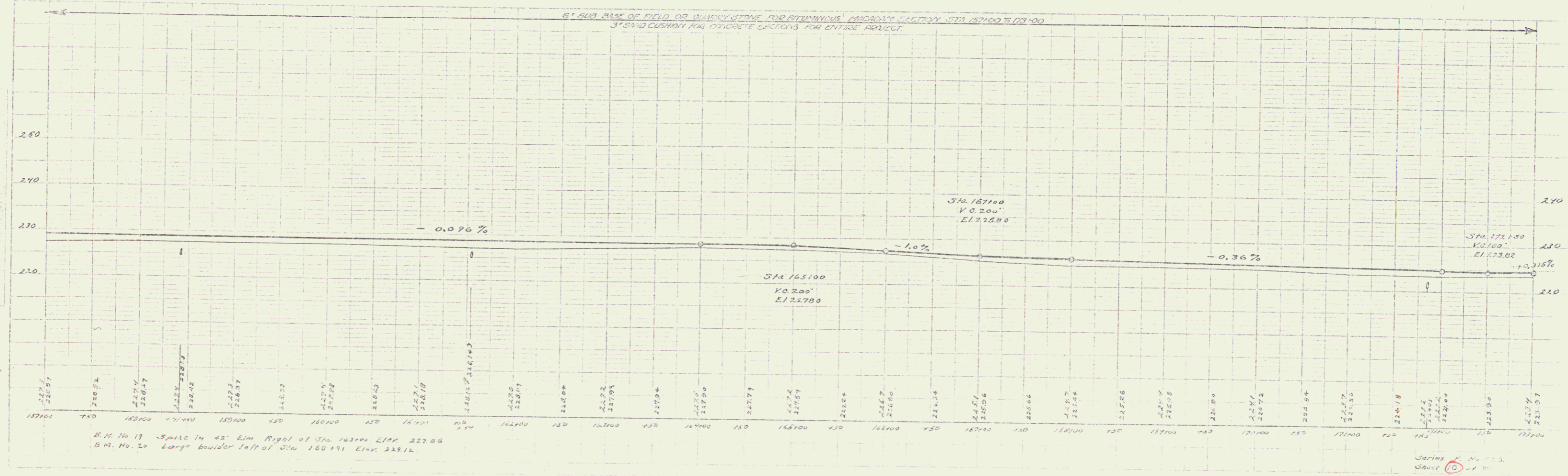
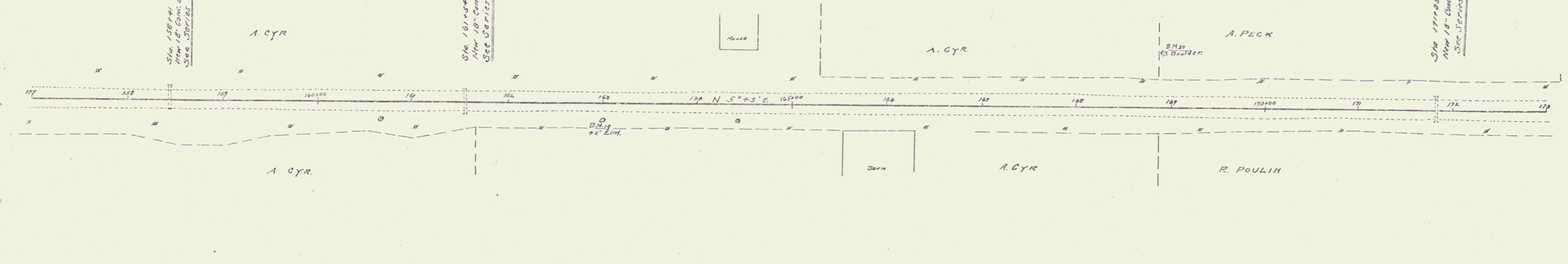
GUARD RAIL REQUIRED
LEFT
 STA 158129 to 158133 = 24 ft
 " 161182 to 161186 = 24 ft
 " 171173 to 171177 = 24 ft
RIGHT
 STA 158129 to 158133 = 24 ft
 " 161182 to 161186 = 24 ft
 " 171173 to 171177 = 24 ft
 TOTAL THIS SHEET 144 ft

NEW CULVERTS REQUIRED
 STA 158141 18" Concrete or Cast Iron Pipe Culvert Length 32 ft
 Class B Conc. (1-2 1/2") 2.7 Cy
 Reinf Steel 33 lb
 STA 161154 18" Concrete or Cast Iron Pipe Culvert Length 32 ft
 Class B Conc. (1-2 1/2") 2.7 Cy
 Reinf Steel 33 lb
 STA 171185 18" Concrete or Cast Iron Pipe Culvert Length 32 ft
 Class B Conc. (1-2 1/2") 2.7 Cy
 Reinf Steel 33 lb

Sta 158141 18" Iron Pipe cul in place
 New 18" Conc or Cast Iron Pipe Culvert
 See District 3, No. 15

Sta 161154 18" Iron Pipe cul in place
 New 18" Conc or Cast Iron Pipe Culvert
 See District 3, No. 15

Sta 171185 18" Iron Pipe cul in place
 New 18" Conc or Cast Iron Pipe Culvert
 See District 3, No. 15



11/10/10
 H. M. CHAMBERS
 DISTRICT 3

11/10/10
 H. M. CHAMBERS
 DISTRICT 3

B.M. No. 17 - Spike in 45 Elm Right of Sta 16300 Elev 227.86
 B.M. No. 20 - Large Boulder left of Sta 16015 Elev 228.12

Series R No. 15
 Sheet 10 of 20