

INDEX OF SHEETS

SHEET NO.	1	TITLE PAGE
	2-3	TYPICAL CROSS-SECTIONS OF IMPROVEMENT (BITUMINOUS CONCRETE PAVEMENT, ITEM 361-B MOD)
	4-5	ITEM QUANTITY SHEETS
	6	ITEM DRAINAGE SHEET
	7-9	EARTHWORK SHEETS (HWY)
	10	EARTHWORK SHEET (CHANNEL)
	11-18	PLAN AND PROFILE SHEETS
	19	GENERAL PLAN (BRIDGE)
	20	PRELIMINARY INFORMATION SHEET (BRIDGE)
	21	PLAN OF CHANNEL
	22	BORING LOGS
	23	ABUTMENT PLAN
	24	ABUTMENT CORNER DETAILS
	25	PIER DETAILS
	26	FRAMING AND DECK PLANS
	27	APPROACH SLABS AND DECK CROSS-SECTIONS
	28	REINFORCING SCHEDULE, SHEET 1 OF 2
	29	REINFORCING SCHEDULE, SHEET 2 OF 2
	30	BRIDGE STANDARD SHEET SCB-30-50, SHEET 1 OF 2-AS APPLIES
	31	BRIDGE STANDARD SHEET SCB-30-50, SHEET 2 OF 2-STRINGER DESIGN
	32	BRIDGE STANDARD SHEET SB-20-56, DETAILS B,C,E,F OR G
	33	BRIDGE STANDARD SHEET SB-22-58, ENTIRE SHEET
	34	BRIDGE STANDARD SHEET SB-50-57, SHEET 1 OF 2, CURB AND ALUM. RAILING DETAILS
	35	BRIDGE STANDARD SHEET SB-50-57, SHEET 2 OF 2, ALT. GALV. METAL RAILING DETAILS
	36	BRIDGE STANDARD SHEET SB-AS 305.8X57, SECTION A-A, B-B, C-C, CURB ENDS AND JOINT DETAILS
	37	ROADWAY STANDARD SHEET RS-55-1, BANKING TABLES
	38	ROADWAY STANDARD SHEET RS-56-3, MARKERS
	39	ROADWAY STANDARD SHEET RS-56-4, DRAINAGE
	40	ROADWAY STANDARD SHEET RS-56-6, TYPICAL GRADING
	41	ROADWAY STANDARD SHEET RS-56-11, THREE CABLE GUARD RAIL WITH STEEL POSTS
	42	ROADWAY STANDARD SHEET RS-56-12, BARRICADE, SIGNS AND LIGHTS
	43	ROADWAY STANDARD SHEET RS-56-14, DRAINAGE
	44	ROADWAY STANDARD SHEET RS-57-9, DRAINAGE
	45	ROADWAY STANDARD SHEET A-61, DRILLING AND BLASTING OF SOLID ROCK SUBGRADE
	46	ROADWAY STANDARD SHEET G-4, MARKERS
	47-118	CROSS SECTIONS
	119-133	CHANNEL SECTIONS

**STATE OF VERMONT
DEPARTMENT OF HIGHWAYS**

PROPOSED IMPROVEMENT

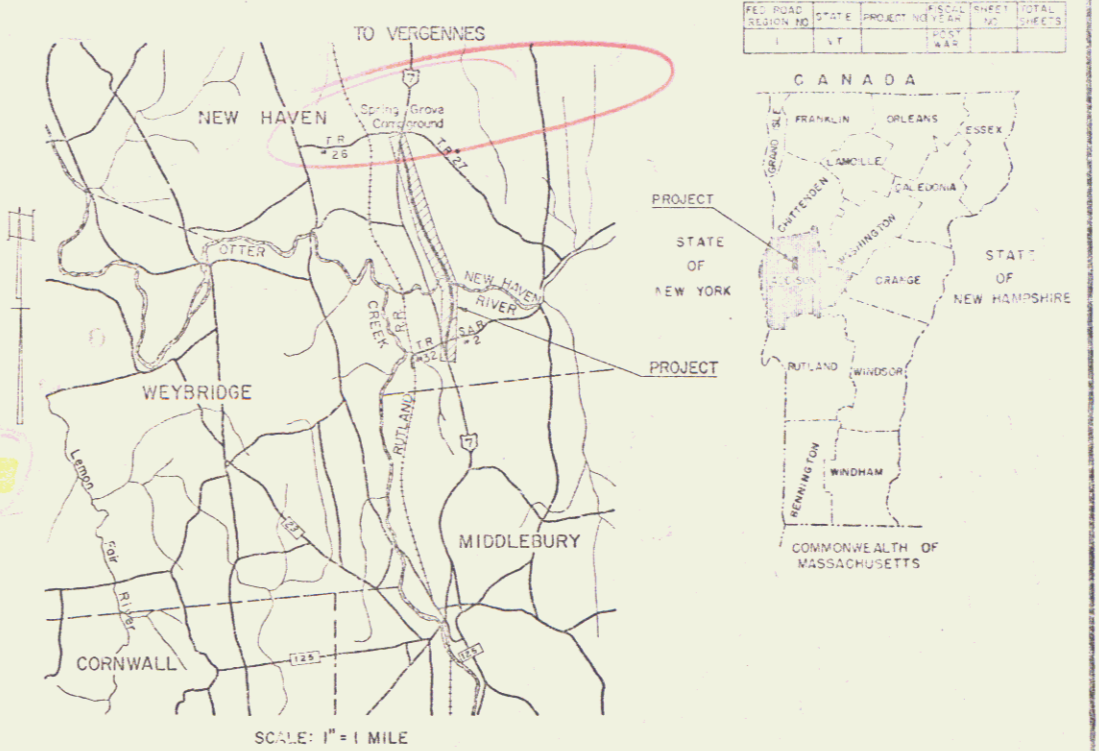
FEDERAL AID PROJECT
TOWN OF NEW HAVEN
COUNTY OF ADDISON
U.S. ROUTE 7 Pin# 99R450
MIDDLEBURY - VERGENNES ROAD

BEGINNING AT A POINT IN THE TOWN OF NEW HAVEN 0.485 MILES NORTH OF THE MIDDLEBURY-NEW HAVEN TOWN LINE AND EXTENDING NORTHERLY 2.209 MILES, INCLUDING BRIDGE.

LENGTH OF ROADWAY 11,410.62 FEET = 2.161 MILES
LENGTH OF BRIDGE 253.10 FEET = 0.048 MILE
LENGTH OF PROJECT 11,663.72 FEET = 2.209 MILES

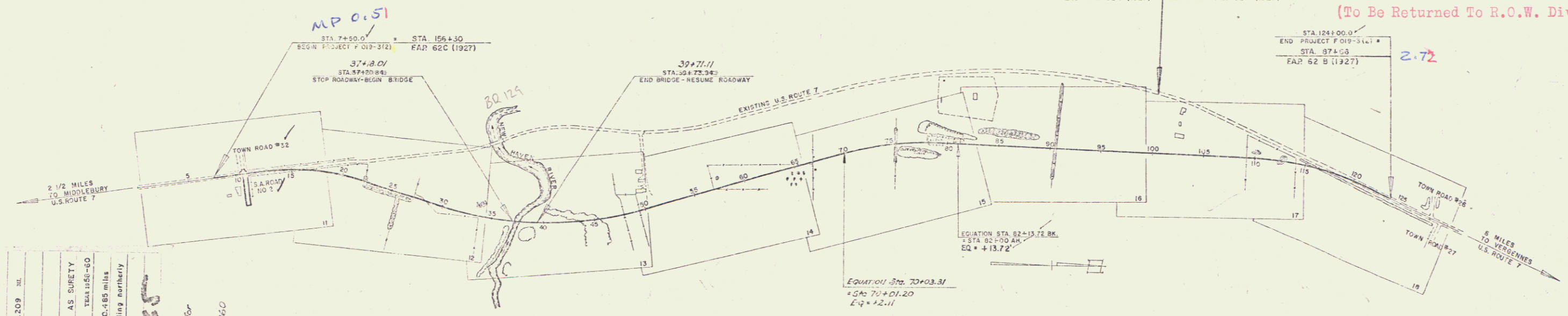
DESIGN DESIGNATION

ADT (1953)	2000
ADT (1975)	4500
DHV	670
D	55.5%
T	7%
V	70 MPH



RIGHT-OF-WAY DIVISION
TOWN FILE

PERPETUAL
Town of US 7
(To Be Returned To R.O.W. Division)



COUNTY OF NEW HAVEN
TOWN OF NEW HAVEN
F. 019.3(2)

BITUMINOUS CONCRETE PAVEMENT

AMERICAN FIDELITY INSURANCE CO. AS SURETY FOR BASLOW CONST. CORP. - RUTLAND, VT. - TRAIL 1481-80

Location: Beginning at a point in the Town of New Haven, 0.485 miles north of the Middlebury-New Haven Town Line and extending northerly 2.209 miles, including bridge.

NEW HAVEN A.D. 1927

American Fidelity Insurance Co. as surety for Baslow Construction Corporation

Baslow Construction Corporation - October 25, 1950

GROUND ELEVATION DATUM 1927 MSL
GRADE ELEVATION DATUM 1927 MSL

CURVE DATA

DEFLECTION OF ANGLE	A
DEGREE OF CURVE	D
RADIUS OF CURVE	R
TANGENT DISTANCE	T
LENGTH OF CURVE	L
EXTERNAL DISTANCE	E
POINT OF INTERSECTION	PI
POINT OF CURVE	PC
POINT OF TANGENT	PT
POINT ON TANGENT	POT
POINT ON SUB-TANGENT	POST

SCALES

TITLE	1" = 500'
TYPICAL	3/8" = 100'
PLAN	1" = 50'
PROFILE	1" = 10'
GROSS SECTIONS	1" = 5'
CHANNEL	1" = 20'

PREPARED BY Baslow Const. Corp.
VERMONT PROJECT NO. 229 DATE 10-24-58

APPROVED [Signature] ENGINEER
DATE 10-24-58

APPROVED [Signature] SUPERVISOR
DATE 10-24-58

APPROVED [Signature] ASSISTANT SUPERVISOR
DATE 10-20-58

APPROVED [Signature] CHIEF ENGINEER
DATE 10-20-58

APPROVED [Signature] ASSISTANT CHIEF ENGINEER
DATE 10-20-58

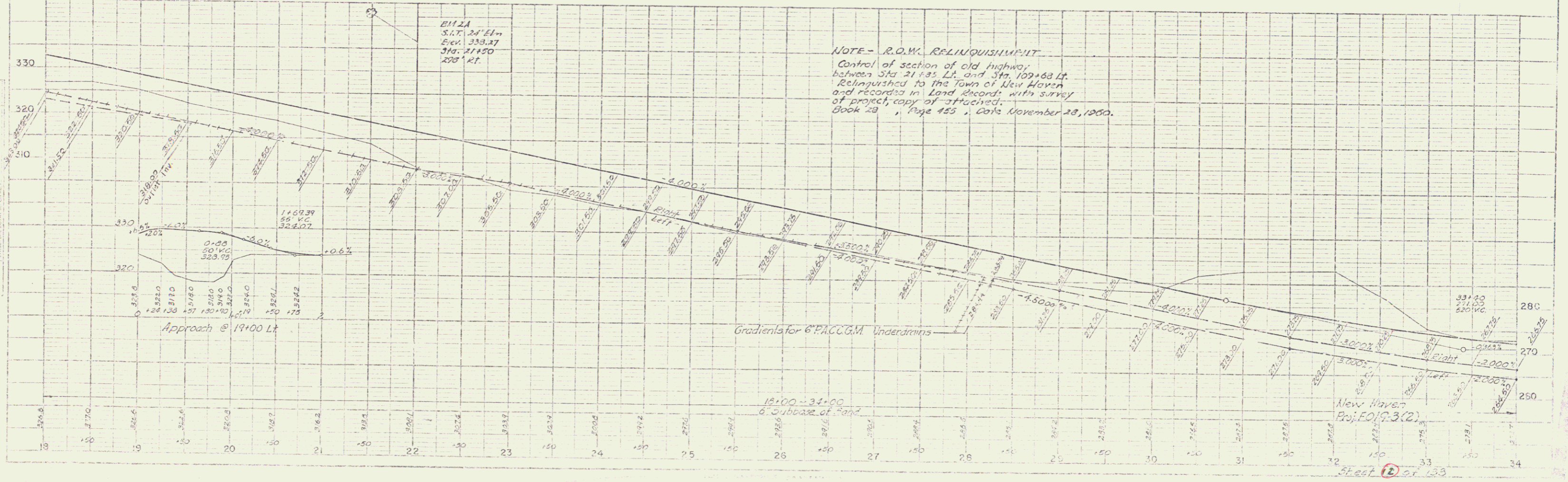
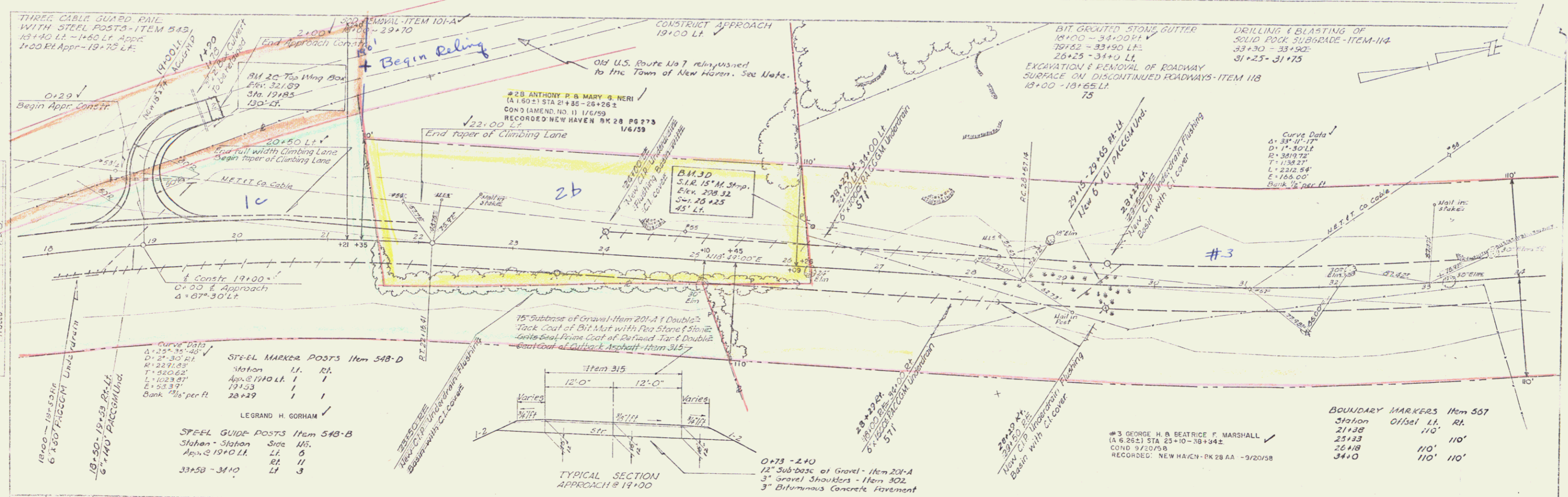
APPROVED [Signature] PROJECT NEW HAVEN NO. F. 019.3(2)
SHEET 1 OF 23

THESE PLANS ARE SUBJECT TO SUCH REVISIONS AS MAY BE REQUIRED BY THE BUREAU OF PUBLIC ROADS OR THE COMMISSIONER OF HIGHWAYS.

CONSTRUCTION IS TO BE CARRIED ON IN ACCORDANCE WITH THE PLANS AND THE STANDARD SPECIFICATIONS FOR HIGHWAY AND BRIDGE CONSTRUCTION OF JANUARY 1958 SUBMITTED TO THE BUREAU OF PUBLIC ROADS AS AMENDED JULY 5, 1958, INCLUDING ALL SUBSEQUENT APPROVED REVISIONS AND SUCH REVISED SPECIFICATIONS AND SPECIAL PROVISIONS AS ARE PERMITTED WITH THE PLANS.

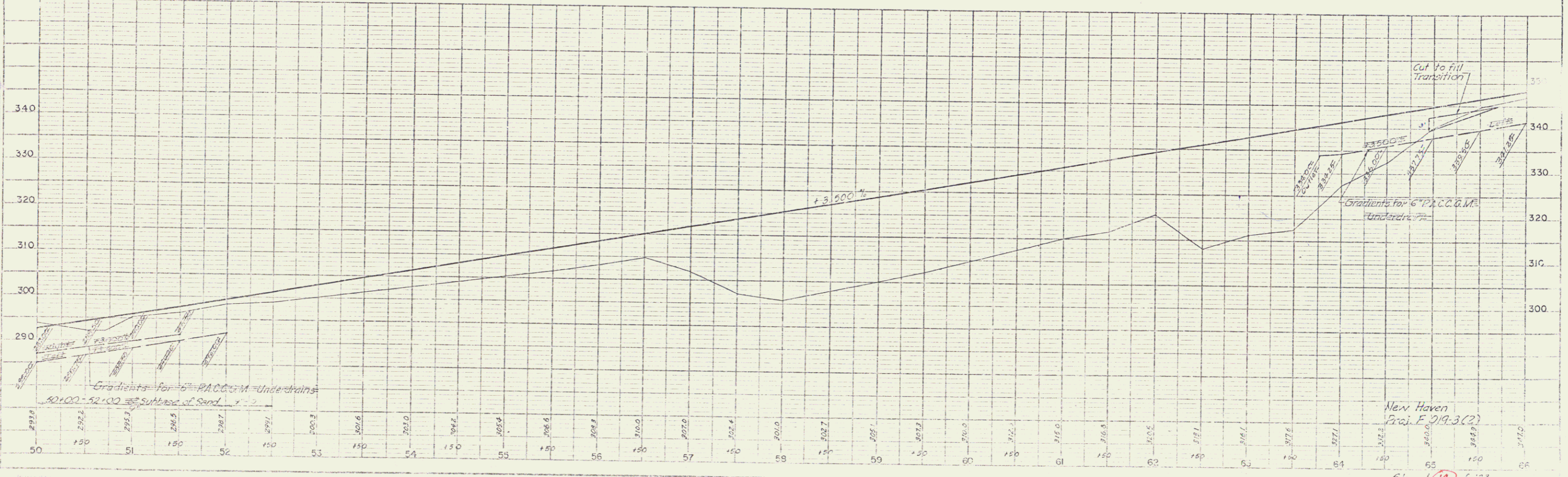
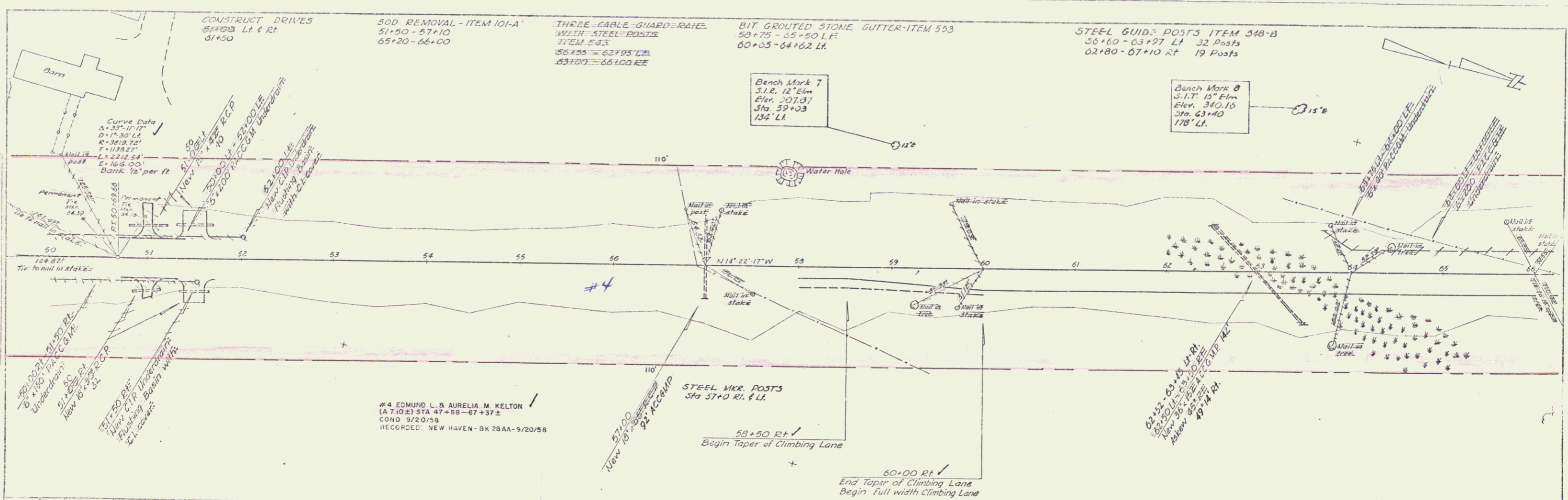
DEPARTMENT OF COMMERCE
BUREAU OF PUBLIC ROADS

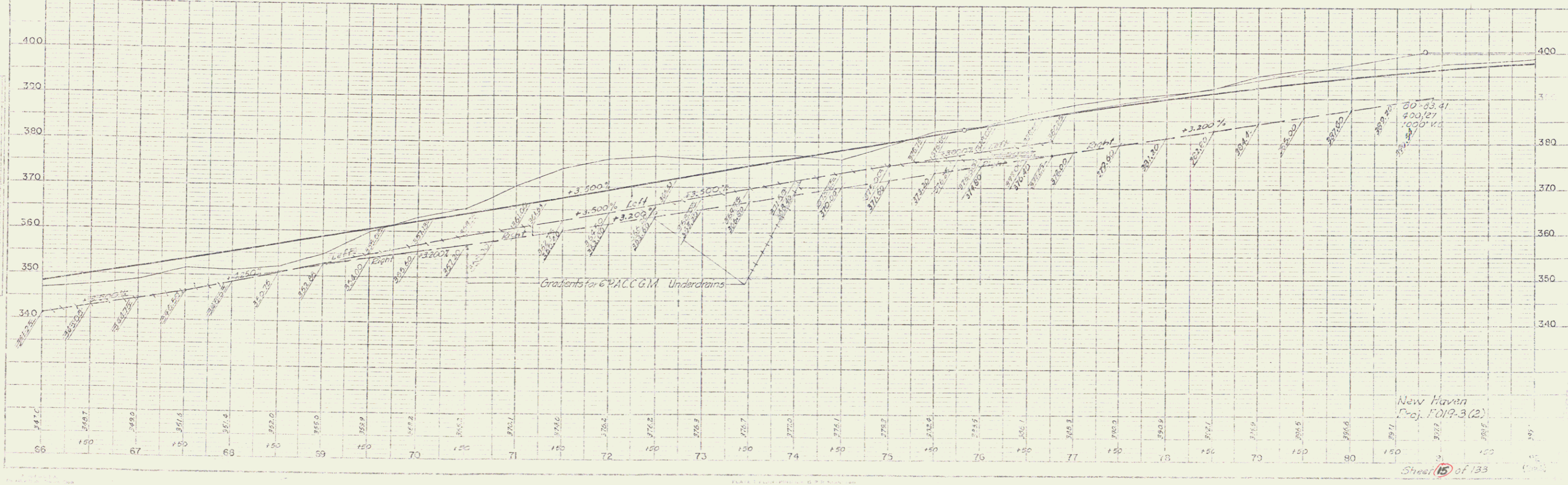
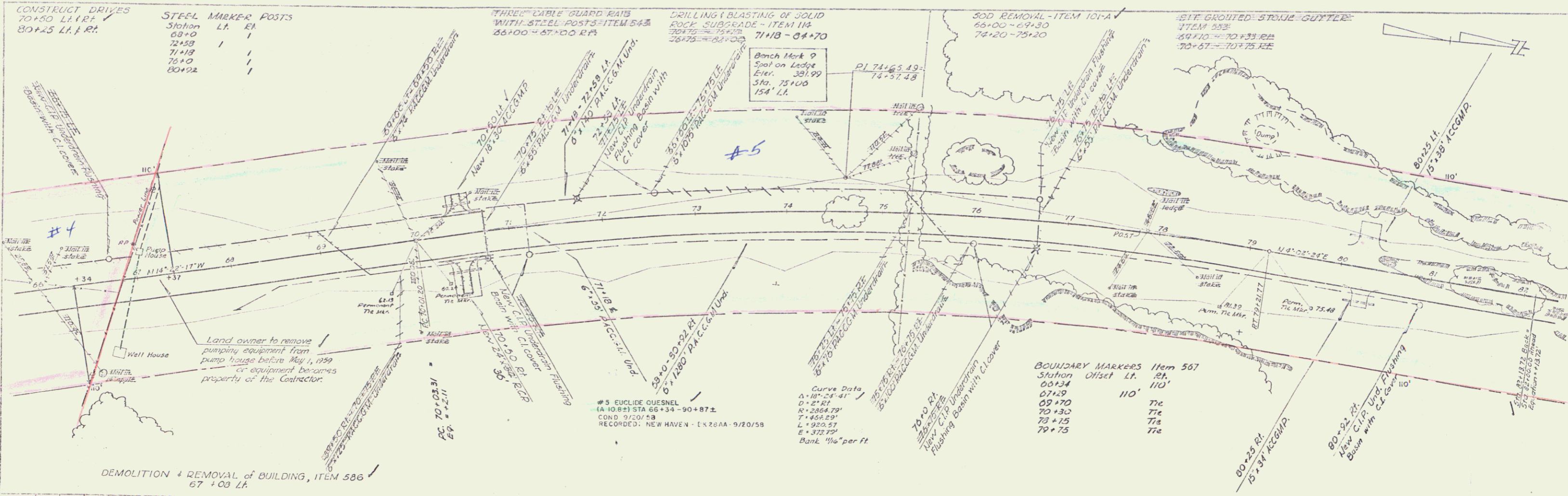
STEARNS R. JENKINS
US 7



PLAN	DATE	BY
REVISED		
NO.		

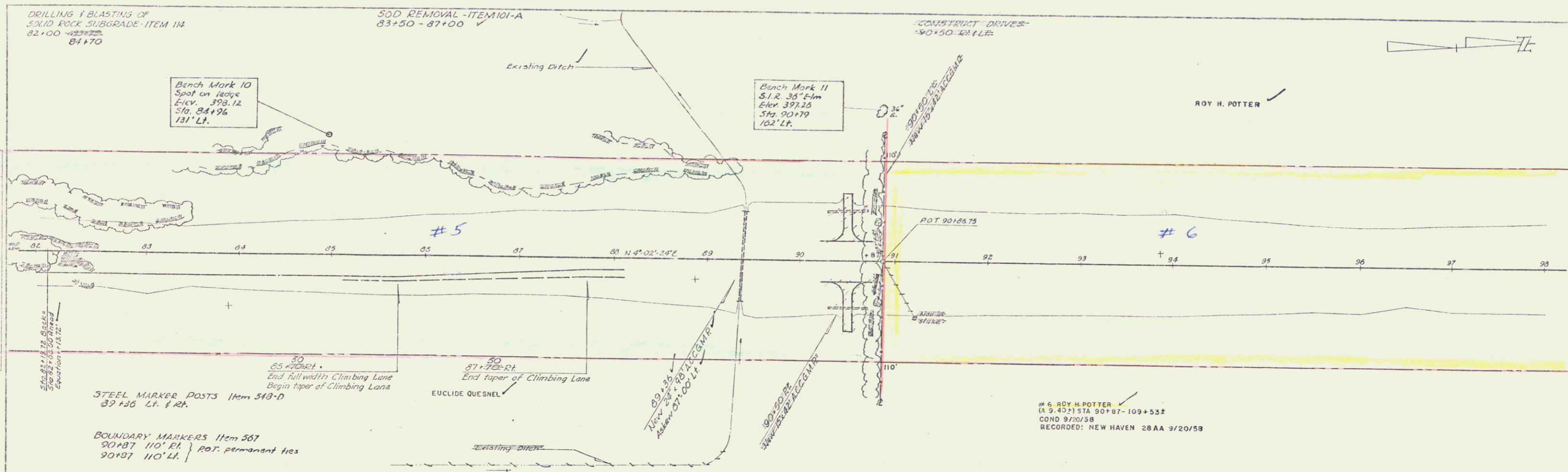
PROFILE	DATE	BY
REVISED		
NO.		





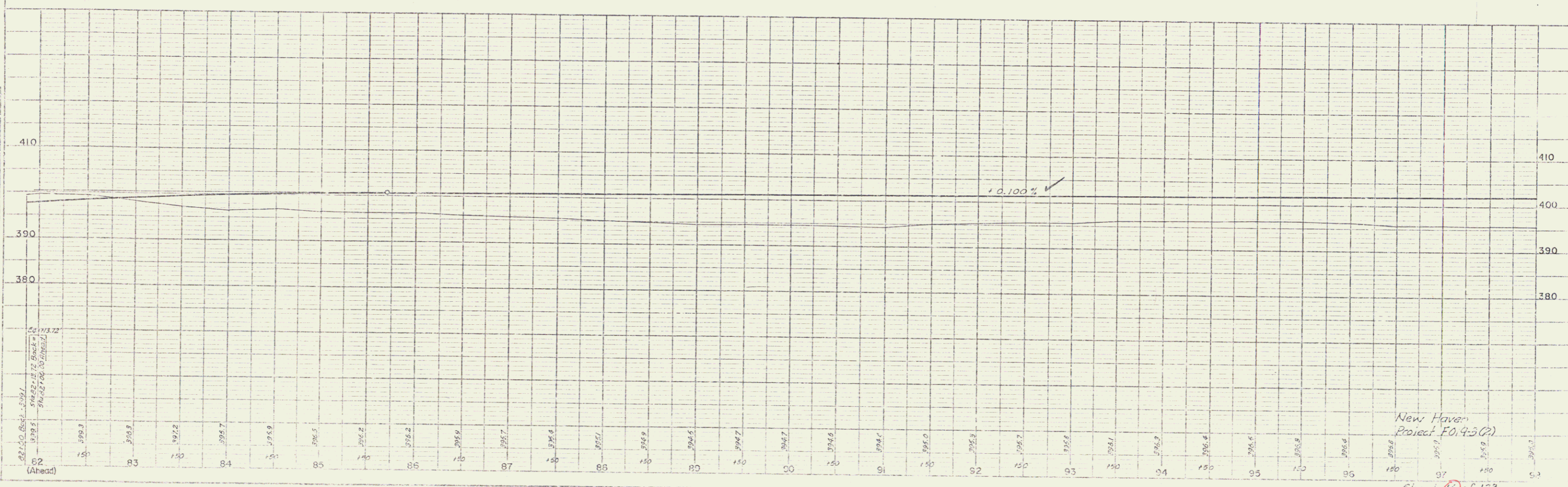
New Haven
 Proj. F019-3(2)

6



DATE	DESCRIPTION
1958	PRELIMINARY
1959	FINAL

SCALE	1" = 40'
DATE	9/20/58
BY	ROY H. POTTER



6 ROY H. POTTER
 (A 9 402) STA 90+87-109+534
 COND 9/20/58
 RECORDED: NEW HAVEN 28AA 9/20/58

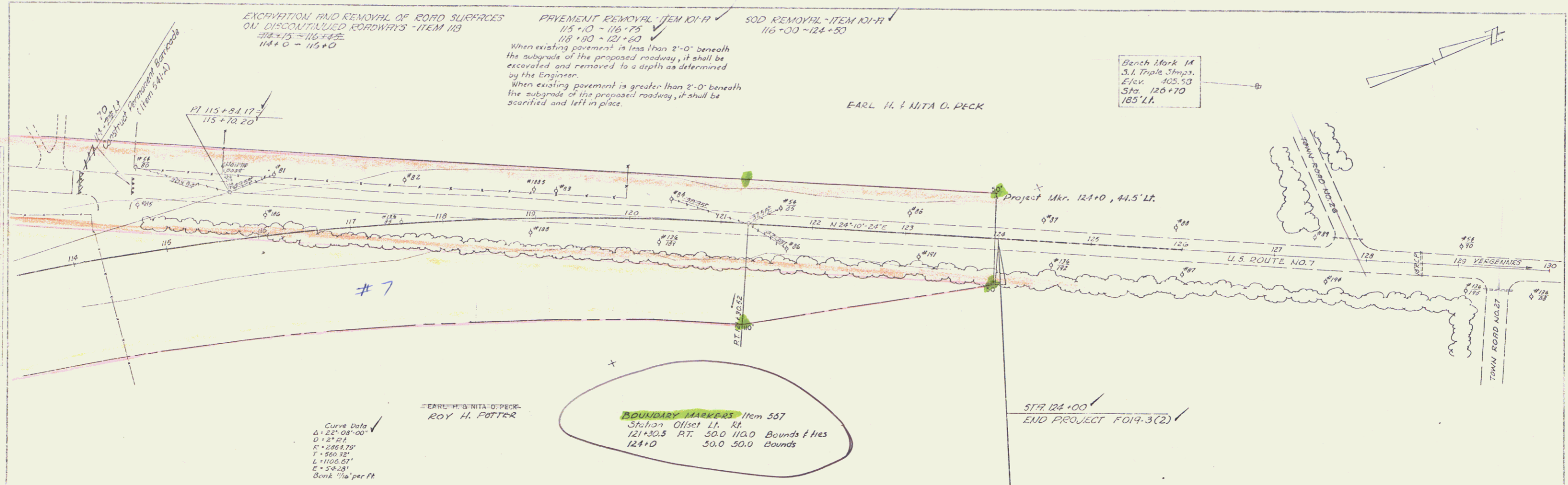
New Haven
 Project E0.4-502

Sheet 16 of 138

7

METEOROLOGICAL
 PLAN
 DATE: 10/1/54
 DRAWN BY: J.P.B.
 CHECKED BY: J.P.B.
 SCALE: AS SHOWN

PROFILE
 HORIZ. SCALE: 1" = 100'
 VERT. SCALE: 1" = 10'
 DATE: 10/1/54



Curve Data
 Δ = 22° 08' 00"
 D = 27.74'
 R = 286.79'
 T = 86.32'
 L = 1106.51'
 E = 54.08'
 Back. 1/4" per ft

BOUNDARY MARKERS Item 557
 Station Offset Lt. Rt.
 121+30.5 RT. 50.0 110.0 Bounds & ties
 124+0 50.0 50.0 Bounds

