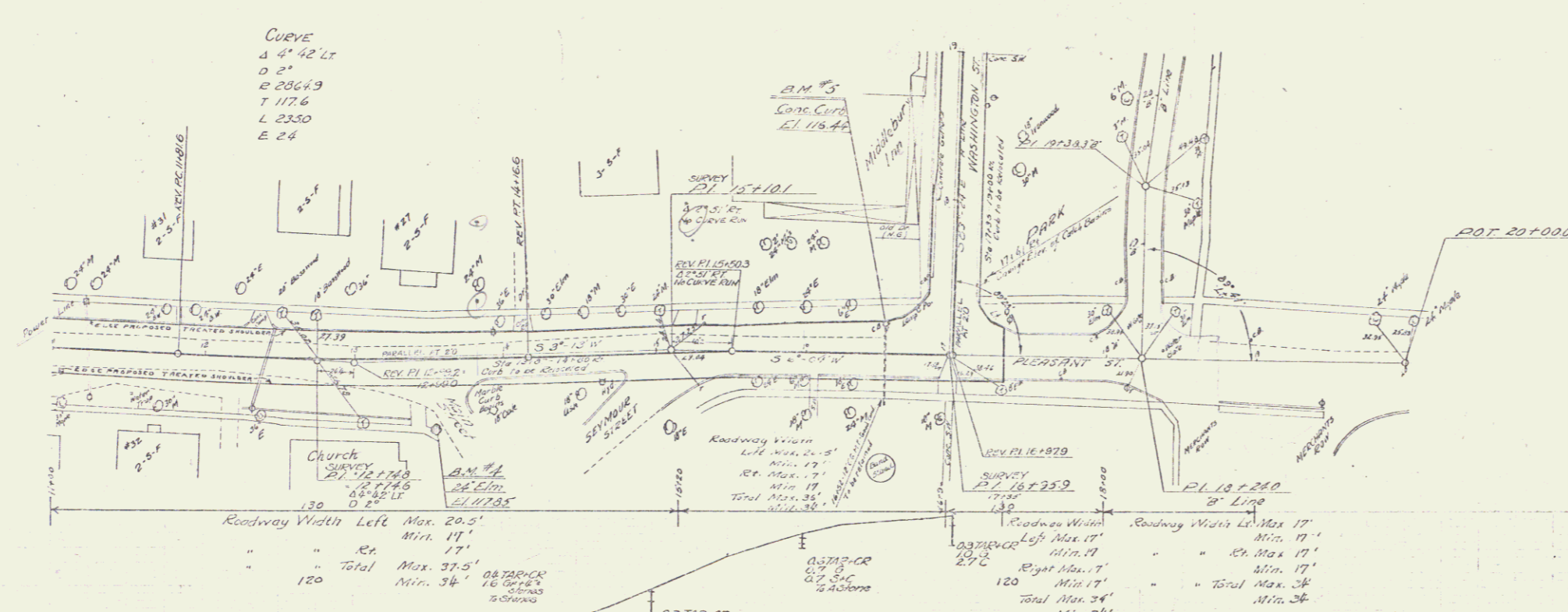


2-D. ROAD  
 BUCKING  
 M. GEORGE  
 1/14/36

SPREAD  
 12" x 12" x 12"



| RESETTING CURB |              |              |             |
|----------------|--------------|--------------|-------------|
| STATION        | TYPE OF CURB | NO. OF CURBS | EST. AMOUNT |
| 11+00          | CONCRETE     | 1            | 1.00        |
| 11+10          | CONCRETE     | 1            | 1.00        |
| 11+20          | CONCRETE     | 1            | 1.00        |
| 11+30          | CONCRETE     | 1            | 1.00        |
| 11+40          | CONCRETE     | 1            | 1.00        |
| 11+50          | CONCRETE     | 1            | 1.00        |
| 11+60          | CONCRETE     | 1            | 1.00        |
| 11+70          | CONCRETE     | 1            | 1.00        |
| 11+80          | CONCRETE     | 1            | 1.00        |
| 11+90          | CONCRETE     | 1            | 1.00        |
| 12+00          | CONCRETE     | 1            | 1.00        |
| 12+10          | CONCRETE     | 1            | 1.00        |
| 12+20          | CONCRETE     | 1            | 1.00        |
| 12+30          | CONCRETE     | 1            | 1.00        |
| 12+40          | CONCRETE     | 1            | 1.00        |
| 12+50          | CONCRETE     | 1            | 1.00        |
| 12+60          | CONCRETE     | 1            | 1.00        |
| 12+70          | CONCRETE     | 1            | 1.00        |
| 12+80          | CONCRETE     | 1            | 1.00        |
| 12+90          | CONCRETE     | 1            | 1.00        |
| 13+00          | CONCRETE     | 1            | 1.00        |
| 13+10          | CONCRETE     | 1            | 1.00        |
| 13+20          | CONCRETE     | 1            | 1.00        |
| 13+30          | CONCRETE     | 1            | 1.00        |
| 13+40          | CONCRETE     | 1            | 1.00        |
| 13+50          | CONCRETE     | 1            | 1.00        |
| 13+60          | CONCRETE     | 1            | 1.00        |
| 13+70          | CONCRETE     | 1            | 1.00        |
| 13+80          | CONCRETE     | 1            | 1.00        |
| 13+90          | CONCRETE     | 1            | 1.00        |
| 14+00          | CONCRETE     | 1            | 1.00        |
| 14+10          | CONCRETE     | 1            | 1.00        |
| 14+20          | CONCRETE     | 1            | 1.00        |
| 14+30          | CONCRETE     | 1            | 1.00        |
| 14+40          | CONCRETE     | 1            | 1.00        |
| 14+50          | CONCRETE     | 1            | 1.00        |
| 14+60          | CONCRETE     | 1            | 1.00        |
| 14+70          | CONCRETE     | 1            | 1.00        |
| 14+80          | CONCRETE     | 1            | 1.00        |
| 14+90          | CONCRETE     | 1            | 1.00        |
| 15+00          | CONCRETE     | 1            | 1.00        |
| 15+10          | CONCRETE     | 1            | 1.00        |
| 15+20          | CONCRETE     | 1            | 1.00        |
| 15+30          | CONCRETE     | 1            | 1.00        |
| 15+40          | CONCRETE     | 1            | 1.00        |
| 15+50          | CONCRETE     | 1            | 1.00        |
| 15+60          | CONCRETE     | 1            | 1.00        |
| 15+70          | CONCRETE     | 1            | 1.00        |
| 15+80          | CONCRETE     | 1            | 1.00        |
| 15+90          | CONCRETE     | 1            | 1.00        |
| 16+00          | CONCRETE     | 1            | 1.00        |
| 16+10          | CONCRETE     | 1            | 1.00        |
| 16+20          | CONCRETE     | 1            | 1.00        |
| 16+30          | CONCRETE     | 1            | 1.00        |
| 16+40          | CONCRETE     | 1            | 1.00        |
| 16+50          | CONCRETE     | 1            | 1.00        |
| 16+60          | CONCRETE     | 1            | 1.00        |
| 16+70          | CONCRETE     | 1            | 1.00        |
| 16+80          | CONCRETE     | 1            | 1.00        |
| 16+90          | CONCRETE     | 1            | 1.00        |
| 17+00          | CONCRETE     | 1            | 1.00        |
| 17+10          | CONCRETE     | 1            | 1.00        |
| 17+20          | CONCRETE     | 1            | 1.00        |
| 17+30          | CONCRETE     | 1            | 1.00        |
| 17+40          | CONCRETE     | 1            | 1.00        |
| 17+50          | CONCRETE     | 1            | 1.00        |
| 17+60          | CONCRETE     | 1            | 1.00        |
| 17+70          | CONCRETE     | 1            | 1.00        |
| 17+80          | CONCRETE     | 1            | 1.00        |
| 17+90          | CONCRETE     | 1            | 1.00        |
| 18+00          | CONCRETE     | 1            | 1.00        |
| 18+10          | CONCRETE     | 1            | 1.00        |
| 18+20          | CONCRETE     | 1            | 1.00        |
| 18+30          | CONCRETE     | 1            | 1.00        |
| 18+40          | CONCRETE     | 1            | 1.00        |
| 18+50          | CONCRETE     | 1            | 1.00        |
| 18+60          | CONCRETE     | 1            | 1.00        |
| 18+70          | CONCRETE     | 1            | 1.00        |
| 18+80          | CONCRETE     | 1            | 1.00        |
| 18+90          | CONCRETE     | 1            | 1.00        |
| 19+00          | CONCRETE     | 1            | 1.00        |
| 19+10          | CONCRETE     | 1            | 1.00        |
| 19+20          | CONCRETE     | 1            | 1.00        |
| 19+30          | CONCRETE     | 1            | 1.00        |
| 19+40          | CONCRETE     | 1            | 1.00        |
| 19+50          | CONCRETE     | 1            | 1.00        |
| 19+60          | CONCRETE     | 1            | 1.00        |
| 19+70          | CONCRETE     | 1            | 1.00        |
| 19+80          | CONCRETE     | 1            | 1.00        |
| 19+90          | CONCRETE     | 1            | 1.00        |
| 20+00          | CONCRETE     | 1            | 1.00        |

