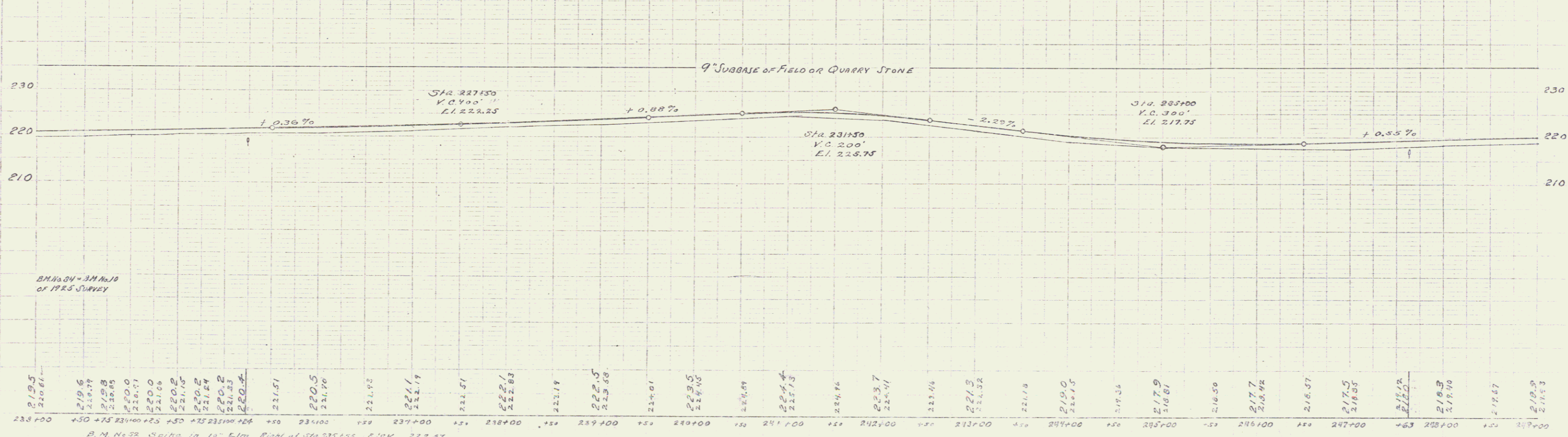
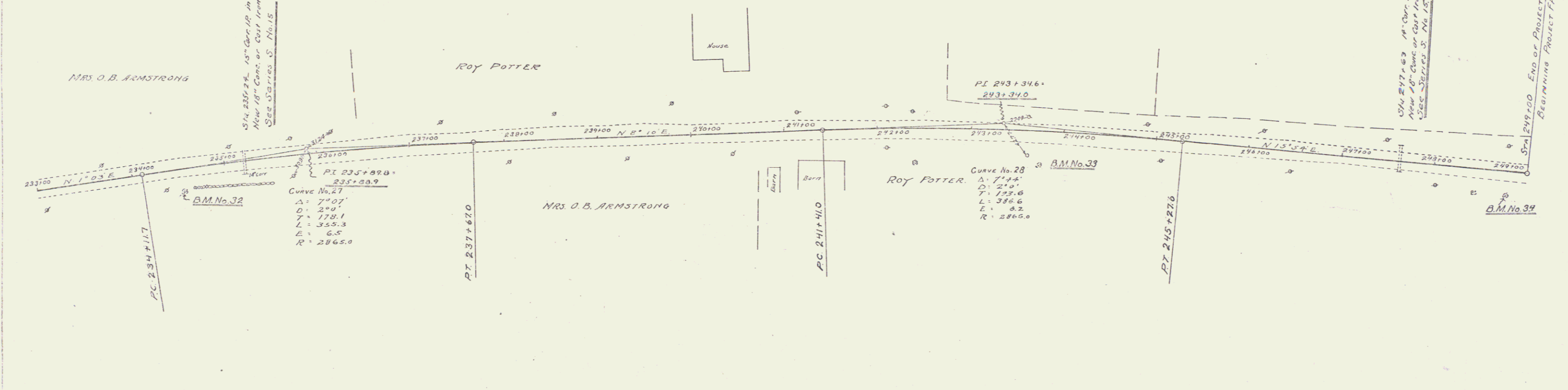


GUARD RAIL REQUIRED
LEFT
 STA 235+12 to 237+34 = 24 ft
 STA 247+41 to 247+75 = 24 ft
RIGHT
 STA 235+12 to 237+34 = 24 ft
 STA 247+51 to 247+75 = 24 ft
TOTAL THIS SHEET 96 ft

NEW CULVERTS REQUIRED
 STA 235+24 18" Reinforced Concrete Pipe Length 32ft
 Class B. Conc. (1-25-3) 27 Cy
 Reinf. Steel 33 lb
 STA 247+63 18" Reinforced Concrete Pipe Length 32ft
 Class B. Conc. (1-25-3) 27 Cy
 Reinf. Steel 33 lb



233+00	234+00	235+00	236+00	237+00	238+00	239+00	240+00	241+00	242+00	243+00	244+00	245+00	246+00	247+00	248+00	249+00
219.5	219.6	219.7	219.8	219.9	220.0	220.1	220.2	220.3	220.4	220.5	220.6	220.7	220.8	220.9	221.0	221.1

B.M. No. 32 Spike in 10" Elm Right of Sta 235+55 Elev. 222.57
 B.M. No. 33 Spike in 20" Elm Right of Sta 242+74 Elev. 220.45
 E. R. 4-34 Spike in 10" Elm Right of Sta 240+70 Elev. 220.48