

FED. ROAD DIST. NO.	STATE	FED. AID PROJ. NO.	LOCAL PROJ. NO.	SHEET NO.	TOTAL SHEETS
1	VT	62C	742715	62	62

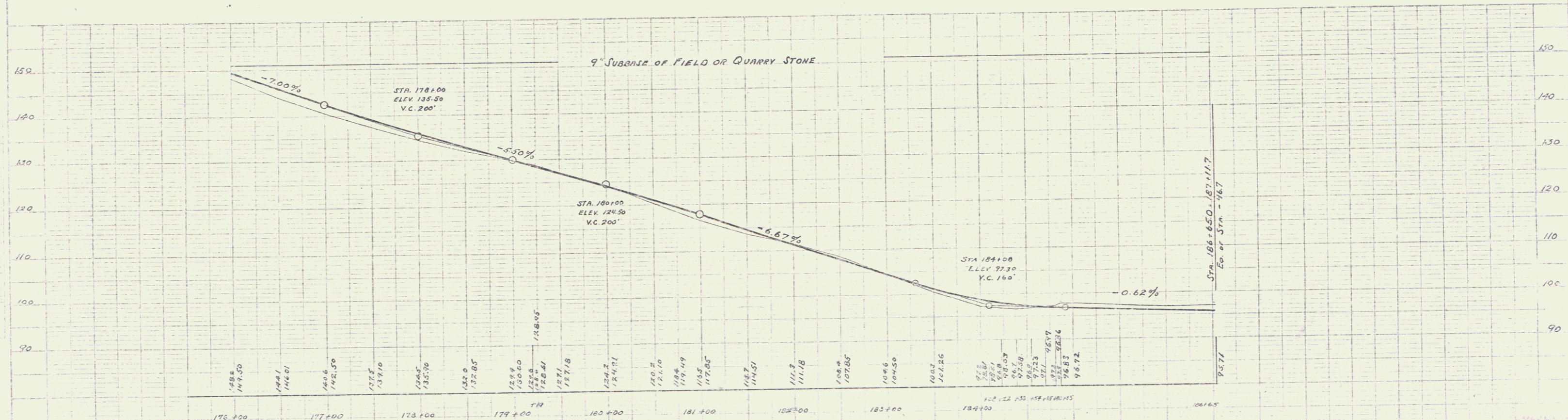
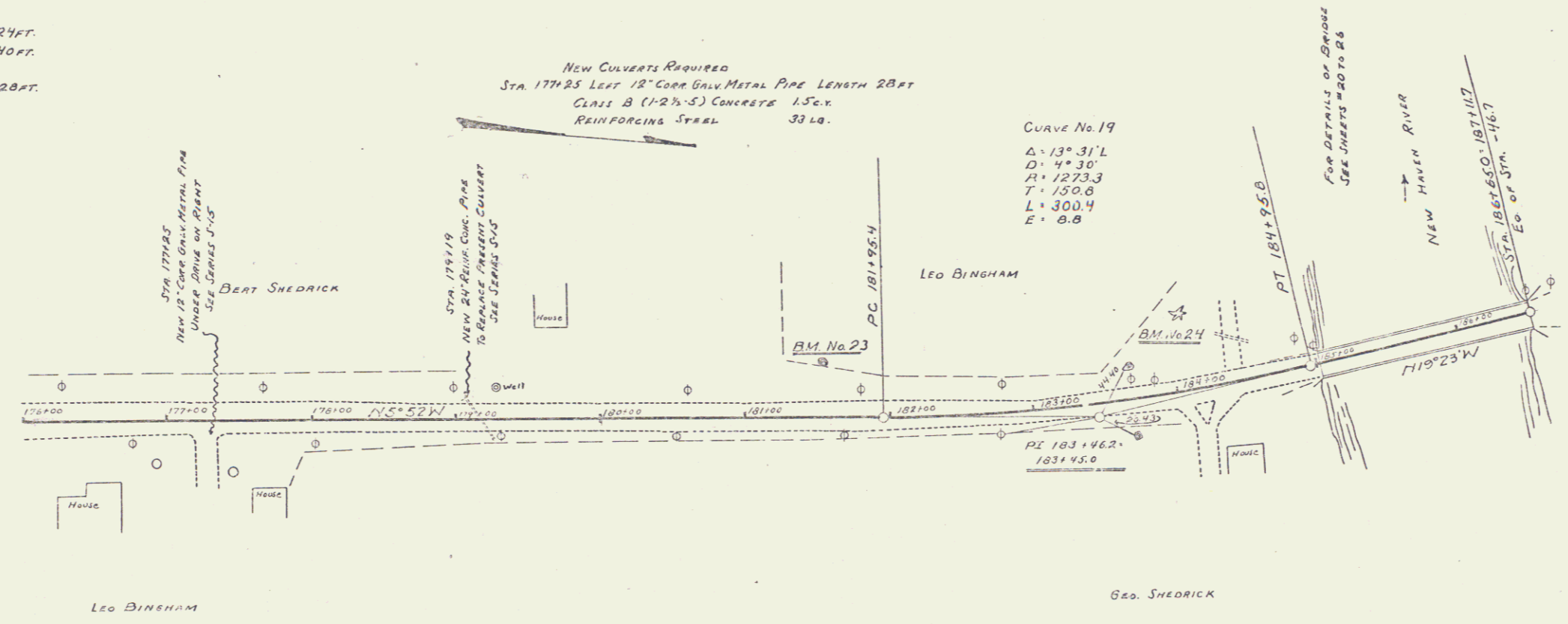
WOOD GUARD RAIL REQUIRED  
 RIGHT  
 STA. 179+50 TO 179+59 LENGTH 24 FT.  
 STA. 184+45 TO 184+85 " 40 FT.  
 LEFT  
 STA. 173+94 TO 179+18 LENGTH 24 FT.  
 STA. 184+45 TO 184+85 " 40 FT.  
 TOTAL THIS SHEET 128 FT.

CABLE GUARD RAIL REQUIRED  
 RIGHT  
 STA. 180+50 TO 182+50 LENGTH 200 FT.  
 TOTAL THIS SHEET 200 FT.

NEW CULVERTS REQUIRED  
 STA. 179+19 24" REIN. CONCRETE PIPE LENGTH 40 FT.  
 CLASS B (1-2 1/2"-5) CONCRETE 5.2 LF.  
 REINFORCING STEEL 50 LB.

NEW CULVERTS REQUIRED  
 STA. 177+25 LEFT 18" CORR GALV METAL PIPE LENGTH 28 FT.  
 CLASS B (1-2 1/2"-5) CONCRETE 1.5 LF.  
 REINFORCING STEEL 33 LB.

CURVE No. 19  
 $\Delta = 13^\circ 31' L$   
 $D = 44.30'$   
 $A = 1273.3$   
 $T = 150.6$   
 $L = 300.4$   
 $E = 8.8$



B.M. No. 23 LEFT STA. 181+50 SPIKE IN 16" ELM. ELEVATION 117.97  
 B.M. No. 24 LEFT STA. 184+08 SPIKE IN 14" PINE ELEVATION 102.34

Series F No. 27C  
 Sheet 62 of 62