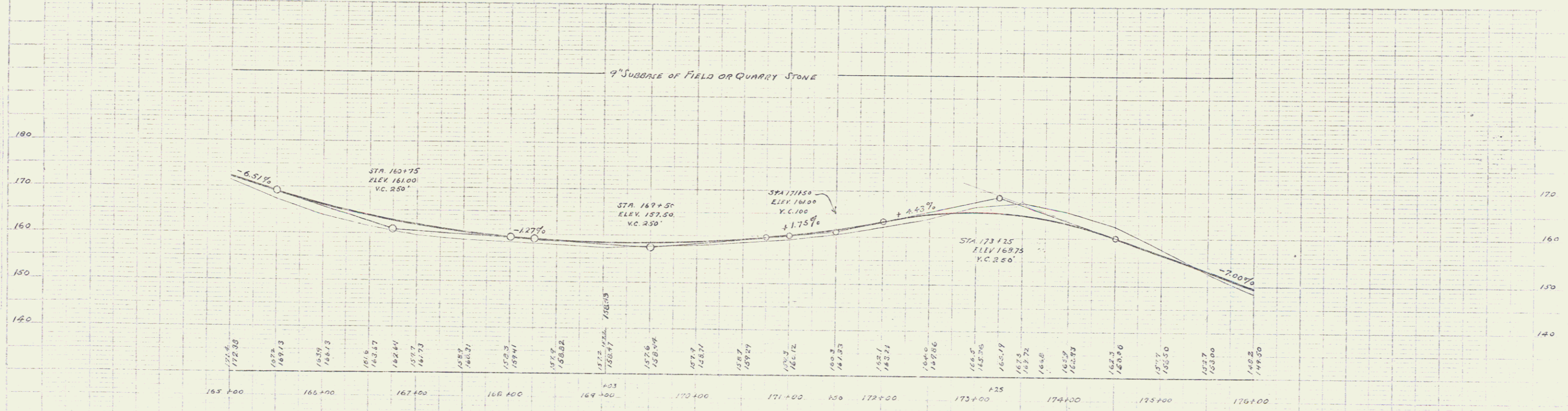
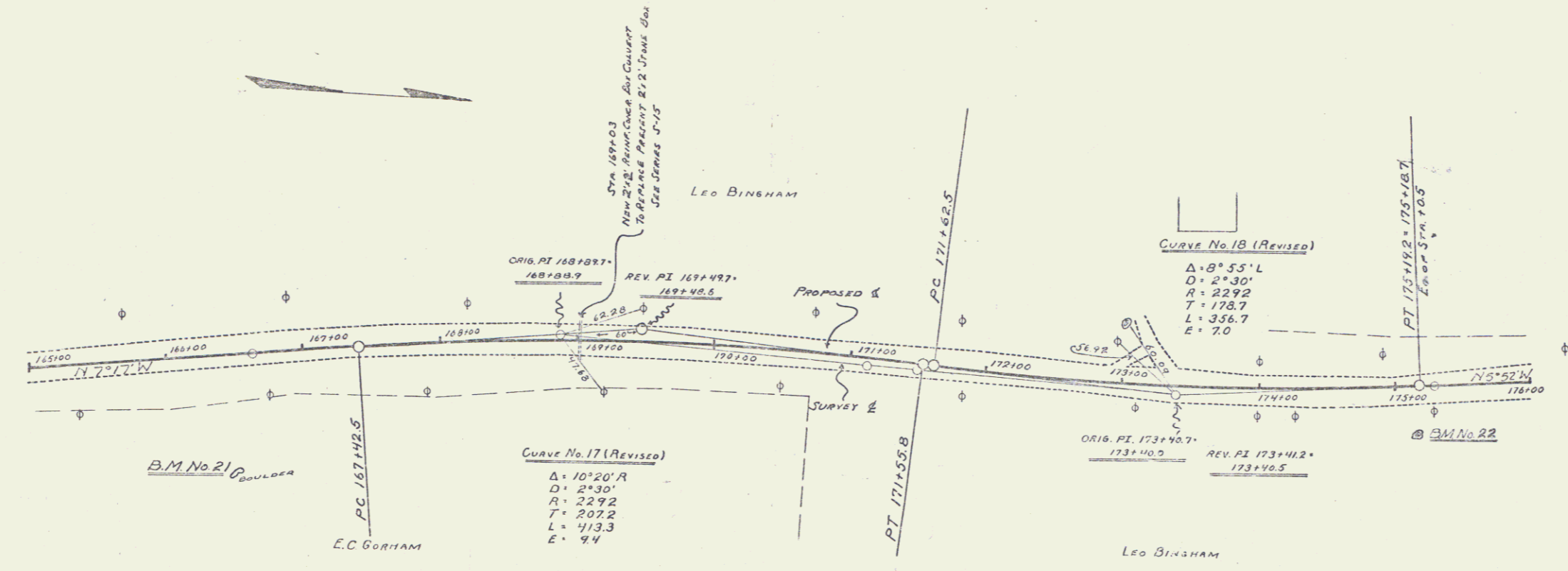


WOOD GUARD RAIL REQUIRED
LEFT
STA 168+91 TO 169+15 LENGTH 24 FT.
TOTAL THIS SHEET 24 FT.

CRACK GUARD RAIL REQUIRED
RIGHT
STA 166+04 TO 169+16 LENGTH 312 FT.
TOTAL THIS SHEET 312 FT.

NEW CULVERTS REQUIRED
STA 169+03 21" REIN. CONCRETE BOX
CLASS A (1.2-H) CONCRETE 10% C
REINFORCING STEEL 683 LB.

FILE NO.	110	NO.	100	DATE	1/27
DIST. NO.	1	NO.	100	DATE	1/27
BY	E.C.	DATE	1/27	BY	E.C.



B.M. No. 21 Right Sta. 166+46 POINT OF BOULDER IN FIELD ELEVATION 149.36
B.M. No. 22 Right Sta. 175+15 SPIKE IN ELM ELEVATION 153.07

Series 7 No. 20
Sheet 64 of 68

13