

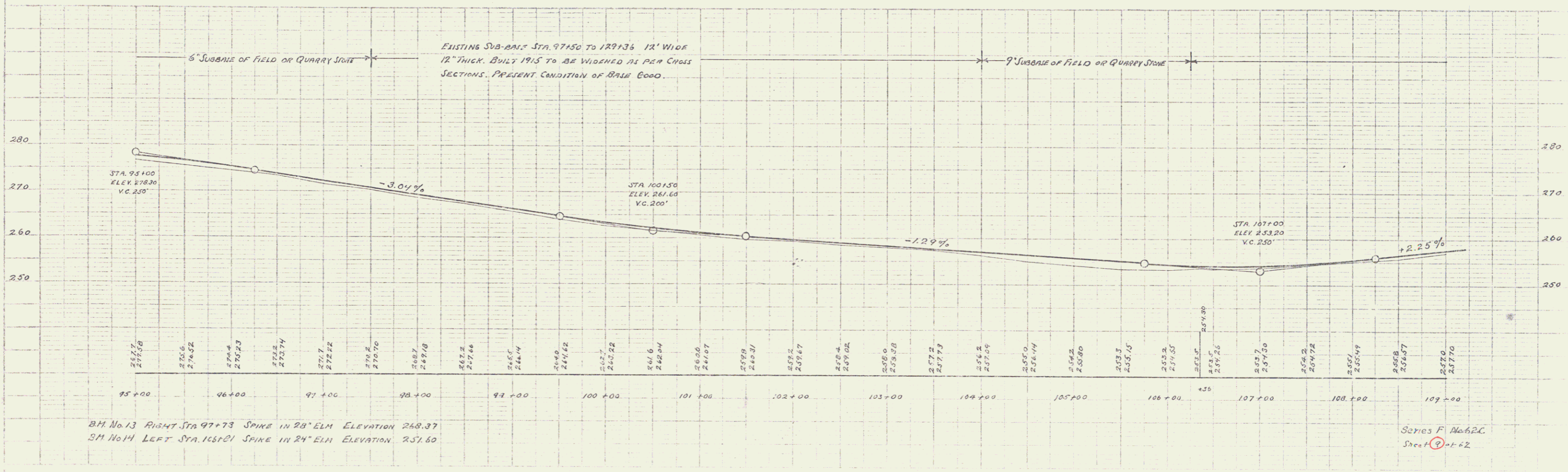
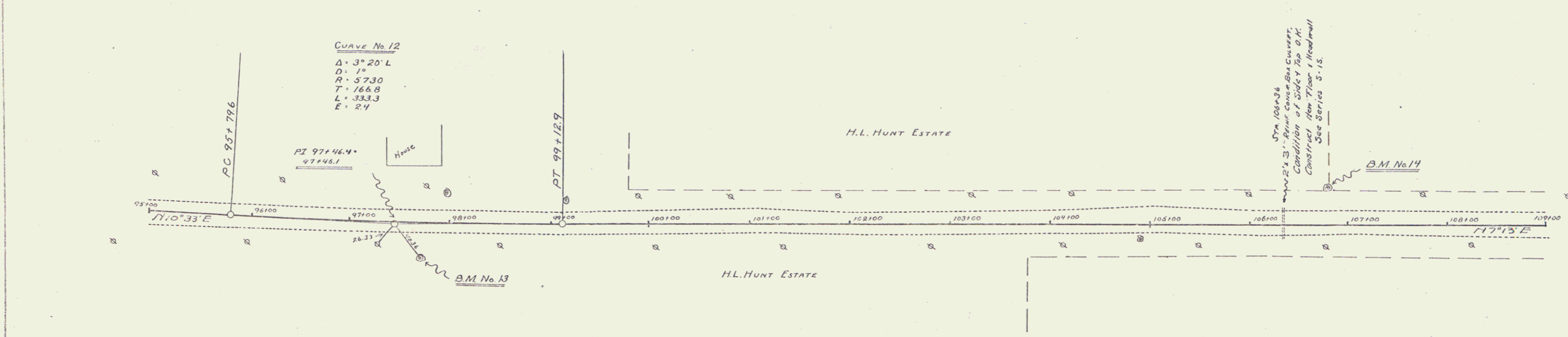
Wood Guard Rail Required
 RIGHT
 STA. 106+24 TO 106+48 LENGTH 24 FT.
 LEFT
 STA. 106+24 TO 106+48 LENGTH 24 FT.
 TOTAL THIS SHEET 48 FT.

OLD CULVERT TO BE REPAIRED.
 STA 106+36 2X3 REIN. CONCRETE BOX
 CLASS A (1-2-4) CONCRETE 6.5 CY
 REINFORCING STEEL 197 LB.

FED. ROAD DIST. NO.	STATE	FED. AID PROJ. NO.	FISCAL YEAR	SHEET NO.	TOTAL SHEETS
1	VT	62C	1957	9	12

DATE: 9-25-57
 DRAWN BY: W. WALKER
 CHECKED BY: W. WALKER
 PROJECT: 62C-1957-12

DATE: 9-25-57
 DRAWN BY: W. WALKER
 CHECKED BY: W. WALKER
 PROJECT: 62C-1957-12



B.M. No. 13 RIGHT STA 97+73 SPIKE IN 28" ELM ELEVATION 268.37
 B.M. No. 14 LEFT STA 105+21 SPIKE IN 24" ELM ELEVATION 257.60

Series F No. 62C
 Sheet 9 of 12