

WOOD GUARD RAIL REQUIRED
 RIGHT
 STA 86+62 TO 86+86 LENGTH 24 FT.
 LEFT
 STA 86+62 TO 86+86 LENGTH 24 FT.
 TOTAL THIS SHEET 48 FT.

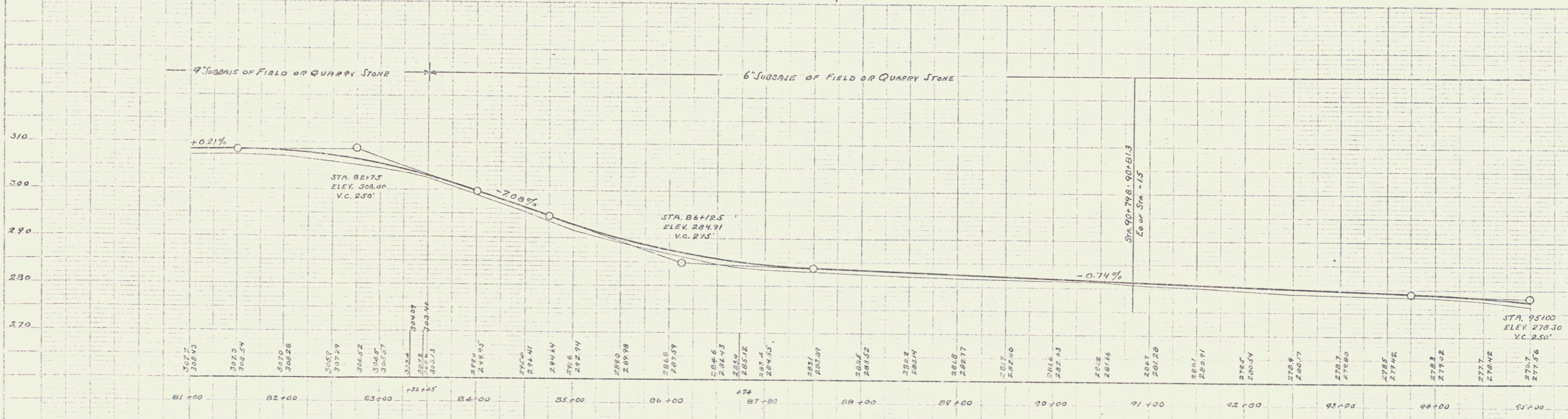
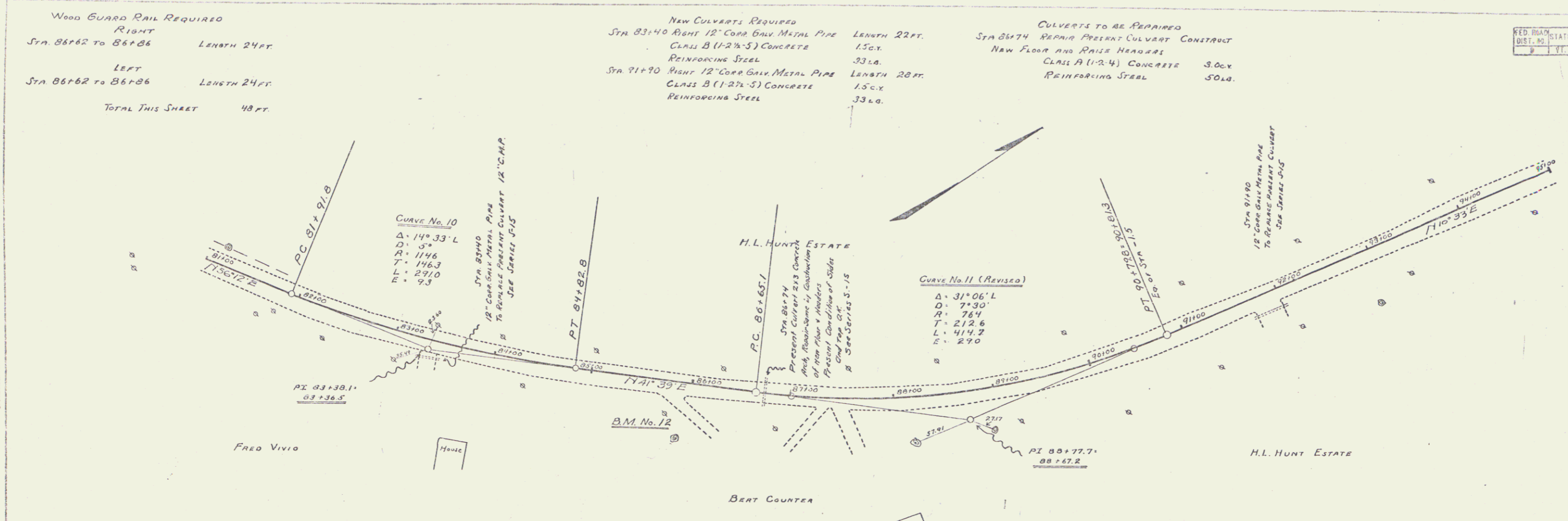
NEW CULVERTS REQUIRED
 STA 83+40 RIGHT 12" CORR GALV METAL PIPE LENGTH 22 FT.
 CLASS B (1-2 1/2"-5) CONCRETE 150 LB.
 REINFORCING STEEL 33 LB.
 STA 91+90 RIGHT 12" CORR GALV METAL PIPE LENGTH 20 FT.
 CLASS B (1-2 1/2"-5) CONCRETE 150 LB.
 REINFORCING STEEL 33 LB.

CULVERTS TO BE REPAIRED
 STA 86+74 REPAIR PRESENT CULVERT CONSTRUCT
 NEW FLOOR AND RAISE HEADWALLS
 CLASS A (1-2 1/4") CONCRETE 300 LB.
 REINFORCING STEEL 50 LB.

FED. ROAD DIST. NO.	STATE	FISCAL YEAR	PROJECT NO.	YEAR	NO.
1	VT	62	727	2	62

W. WALKER
 W. S. WALKER
 9-22
 1977

W. WALKER
 W. S. WALKER
 9-22
 1977



B.M. No. 12 RIGHT STA. 85+91 SPIKE IN 28" ELM. ELEVATION 233.82

Series No. 62C
 Sheet 6 of 62