

Wood Guard Rail Required
 RIGHT
 STA 69+26 TO 69+50 LENGTH 24 FT.
 STA 70+43 TO 70+72 " 24 FT.
 LEFT
 STA 70+43 TO 70+72 LENGTH 24 FT.
 TOTAL THIS SHEET 72 FT.

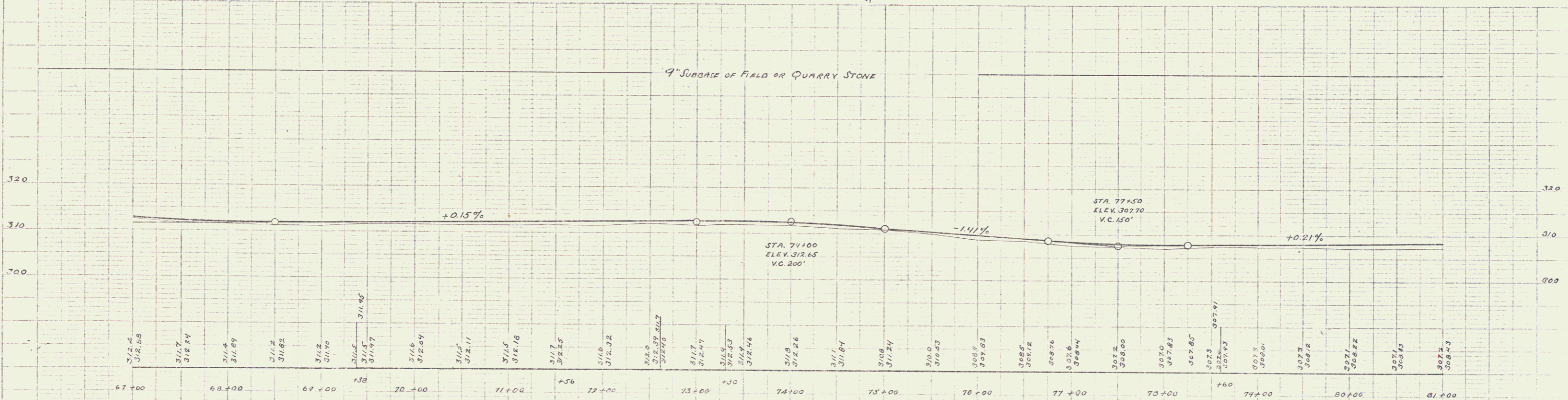
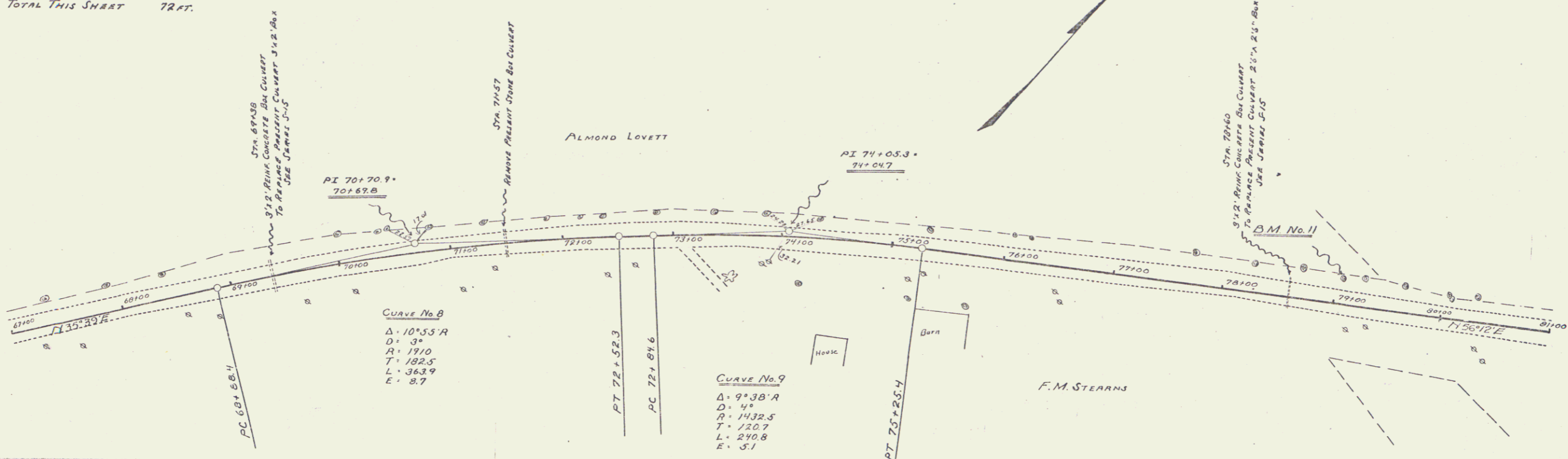
Cable Guard Rail Required
 LEFT
 STA 68+38 TO 72+06 LENGTH 448 FT.
 TOTAL THIS SHEET 448 FT.

NEW CULVERTS REQUIRED
 STA 69+38 REINF. CONCRETE BOX CULVERT 3'x2'
 CLASS A (12"4) CONCRETE 13.5CY
 REINFORCING STEEL 816 LB.
 STA 70+60 3'x2' REINF. CONCRETE BOX CULVERT
 CLASS A (12"4) CONCRETE 13.5CY
 REINFORCING STEEL 816 LB.

FED. ROAD DIST. NO.	STATE	FED. AID PROJ. NO.	FISCAL YEAR	SHEET NO.	TOTAL SHEETS
8	VT.	62C	1927	7	62

WALKER
 2-25
 5-27

WALKER
 2-25
 5-27



BM No. 11 LEFT STA 79+05 SPIKE IN 24" ELM. ELEV. 305.79

Series F No. 62C
 Sheet 7 of 62