

Wood Guard Rail Required  
RIGHT  
Sta 57+38 to 57+52 Length 24ft.  
TOTAL THIS SHEET 24ft.

Cable Guard Rail Required  
LEFT  
Sta 53+50 to 60+06 Length 656ft.  
TOTAL THIS SHEET 656ft.

New Culverts Required  
Sta 57+50 24" Rein Concrete Pipe Length 32ft With Drop Inlet  
Class A (1-2-4) Concrete 12cy  
Class B (1-2-5) " 21cy  
Reinforcing Steel 103lb.

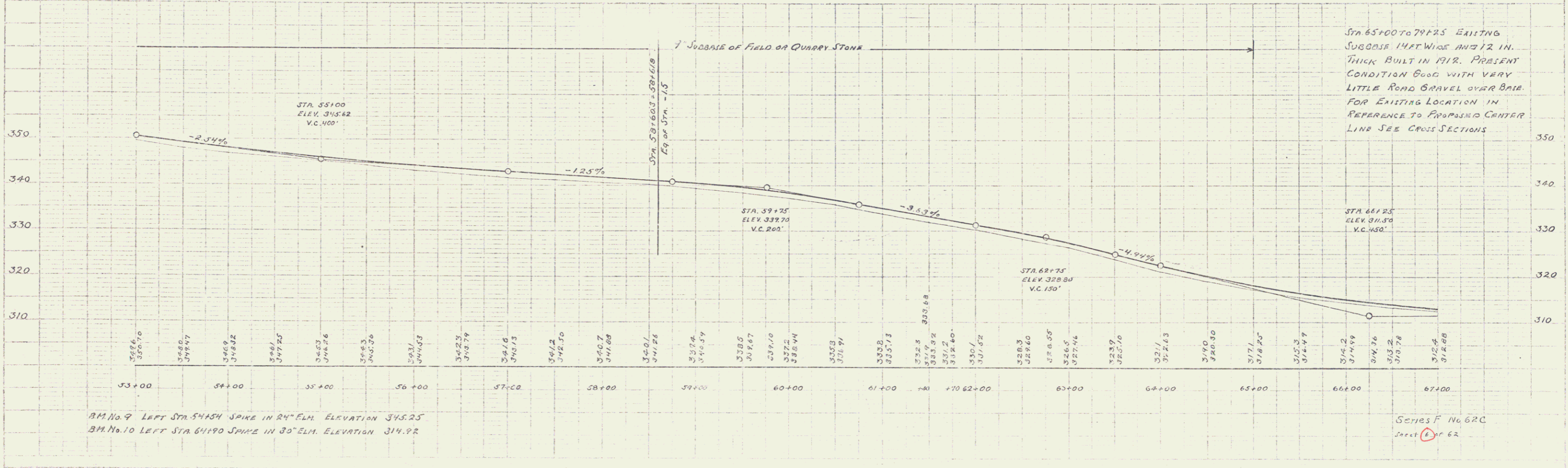
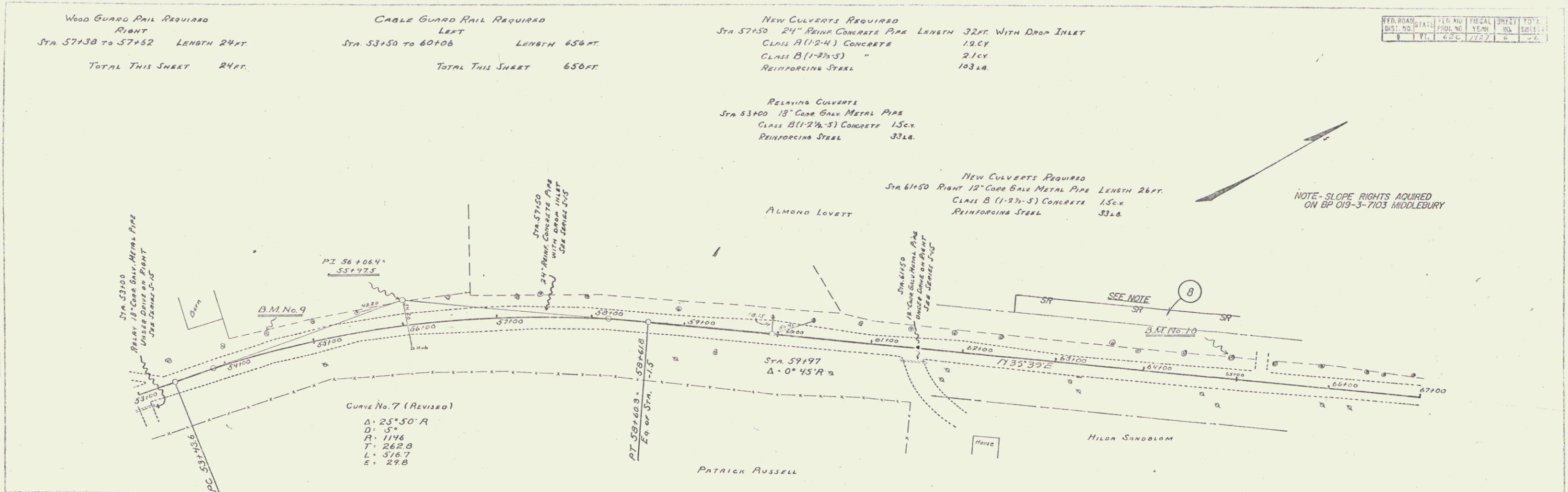
Relaying Culverts  
Sta 53+00 18" Corrug Metal Pipe  
Class B (1-2-5) Concrete 15cy  
Reinforcing Steel 33lb.

New Culverts Required  
Sta 61+50 Right 12" Corrug Metal Pipe Length 26ft.  
Class B (1-2-5) Concrete 15cy  
Reinforcing Steel 33lb.

FEED ROAD	STAT.	FILE NO.	FISCAL YEAR	SHEET NO.	TOTAL SHEETS
101	101	62C	1952	62	62

W.E. WALKER  
S.P.E.  
1952

W.E. WALKER  
S.P.E.  
1952



B.M. No. 9 LEFT STA 54+54 SPIKE IN 24" ELM. ELEVATION 345.25  
B.M. No. 10 LEFT STA 61+90 SPIKE IN 30" ELM. ELEVATION 314.92

Series F No. 62C  
Sheet 62 of 62

5