

INDEX OF SHEETS

SHEET NO.	TITLE PAGE
1	TYPICAL CROSS-SECTION OF IMPROVEMENT BITUMINOUS CONCRETE PAVEMENT, ITEM 341-B
2	PAVING AND WIDENING TABLES
3	QUANTITY SHEETS (ITEM)
4	QUANTITY SHEET (DRAINAGE)
5	EARTHWORK SHEETS
6-15	PLAN AND PROFILE SHEETS
16-17	PLAN AND PROFILE SHEETS (20 SCALE BRIDGE)
18	PRELIMINARY INFORMATION SHEET (BRIDGE)
19	SUPERSTRUCTURE PLAN AND ELEVATION
20	STEEL PLAN
21	EXPANSION PLATE DETAILS
22	ABUTMENT NO. 1 DETAILS
23	ABUTMENT NO. 2 DETAILS
24	END POSTS AND INTERMEDIATE POST DETAILS
25	PIER NO. 1 DETAILS
26	PIER NO. 2 DETAILS
27	REINFORCING STEEL DETAILS
28	CONSTRUCTION DETAILS (DRAINAGE AND MARKERS)
29	CONSTRUCTION DETAILS (TYPICAL GRADING)
30	STANDARD STRUCTURE SHEET 3-40 (BARRICADES, SIGNS AND LIGHTS)
31	STANDARD STRUCTURE SHEET 3-43-45 (PLANK GUARD RAIL)
32	STANDARD STRUCTURE SHEET 3-47-49 (DROP INLET)
33	STANDARD STRUCTURE SHEET 3-49-48 (THREE CANILE GUARD RAIL)
34	STANDARD STRUCTURE SHEET 3-53-49 (PRECAST R.C.P. DROP INLET)
35	STANDARD STRUCTURE SHEET 3-51 (BARRICADES, SIGNS AND LIGHTS BRIDGES)
36	STANDARD STRUCTURE SHEET 3-52 DETAILS C, D, E, J, AND K
37-76	CROSS-SECTIONS
77-81	CHANNEL SECTIONS

STATE OF VERMONT
DEPARTMENT OF HIGHWAYS

PROPOSED IMPROVEMENT

FEDERAL AID PROJECT

TOWN OF FERRISBURG
COUNTY OF ADDISON

U.S. ROUTE 7
BURLINGTON-VERGENNES ROAD

Pin # 99R 445

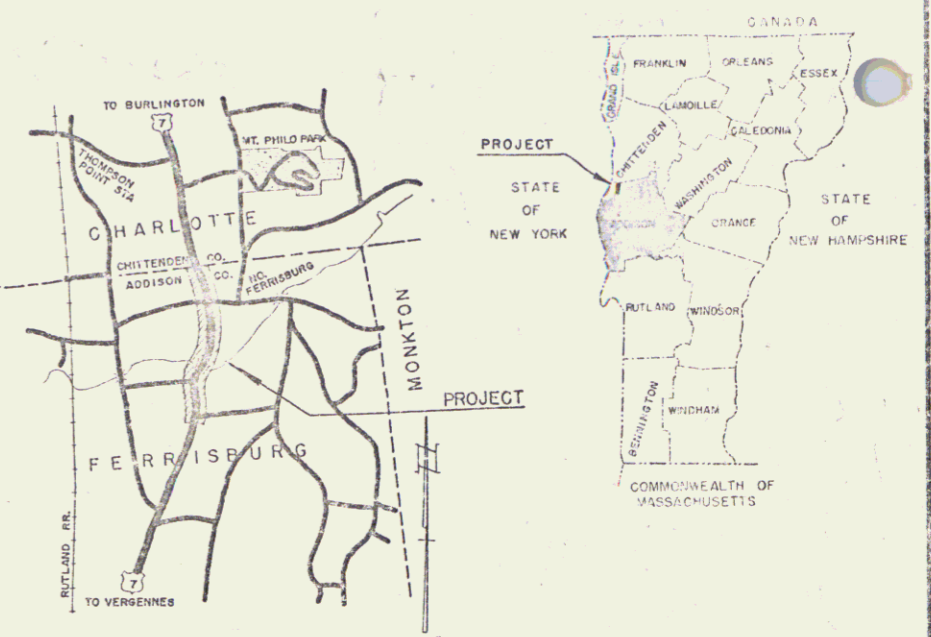
STANDARD STRUCTURE SHEET APPROVED BY THE CHIEF ENGINEER, VERMONT STATE DEPARTMENT OF HIGHWAYS. S 40 JUNE 10, 1950

(To Be Returned To R.O.W. Division)

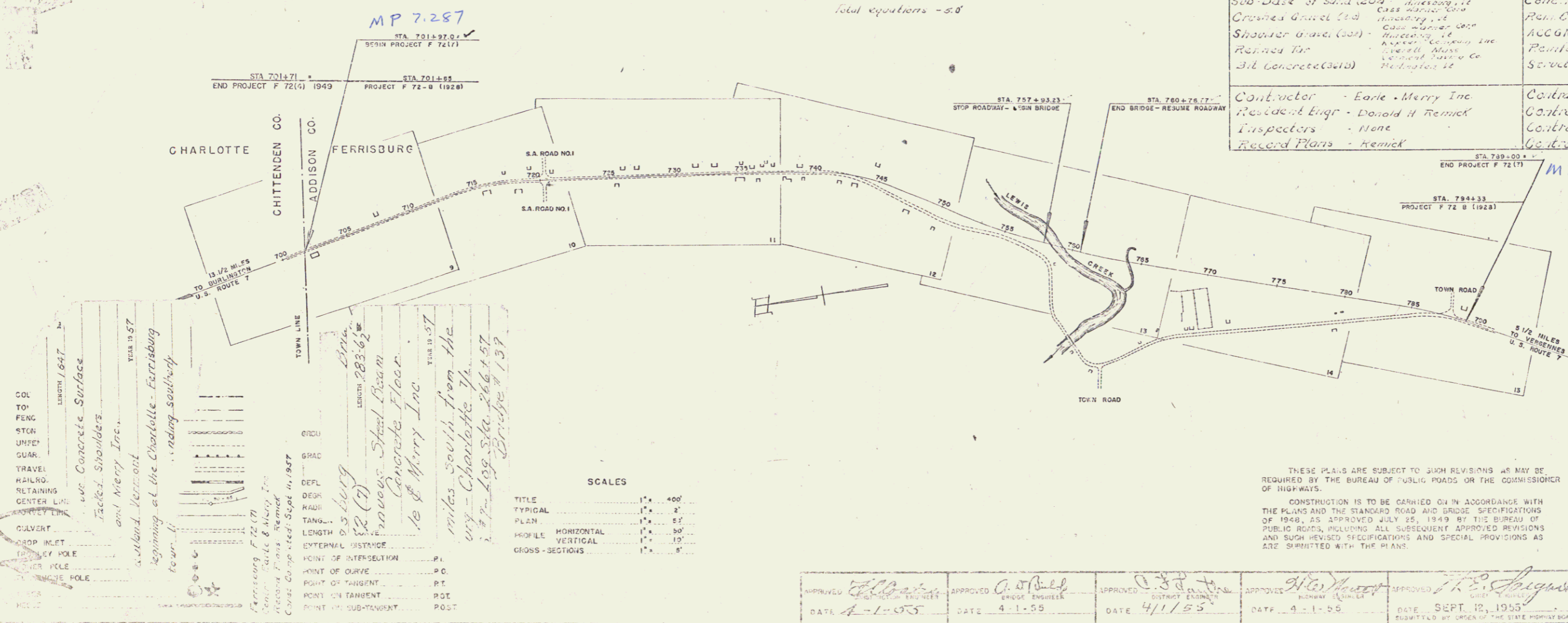
PERPETUAL
TOWN OF
U.S. 7
RIGHT-OF-WAY DIVISION
TOWN FILE

BEGINNING AT THE CHARLOTTE-FERRISBURG TOWN LINE AND EXTENDING SOUTHERLY 8,703.0 FEET 8,698.0

LENGTH OF ROADWAY 8,414.46 FEET = 1.594 MILES
LENGTH OF BRIDGE 28354 FEET = 0.054 MILE
LENGTH OF PROJECT 8,703.0 FEET = 1.648 MILES
8,698.0
Total Stations - 5.0



PROJECT NAME & NUMBER	T.P.	PAVEMENT AREA
Improving U.S. 7	1/2 mile Concrete on Base	13,997
RECORD PLANS		
MATERIALS		
Sub Base of Gravel (20%) Sub Base of Sand (20%) Crown Gravel (20%) Shoulder Gravel (20%) Reinforced Concrete (20%)	Cement Cone. Aggregates Rat. Conc. Flow ACGMP Reinforcing Steel Structural Steel	Line 3000 Reinforcing Steel Cone. Aggregates Rat. Conc. Flow ACGMP Reinforcing Steel Structural Steel
Contractor - Earle Merry Inc. Resident Engr - David H. Kemick Inspectors - None Record Plans - Kemick	Contract Dated - Dec 23, 1949 Contract Started - Mar 2, 1950 Contract Completed - Sept 11, 1950 Contract Accepted - Sept 11, 1950	



COL TO FENC
URNEY
QUARK
TRAVEL
RAILRO.
RETAINING
CENTER LINE
CULVERT
DRAIN INLET
DRAIN PIPE
DRAIN HOLE
DRAIN

Concrete Surface
Concrete Shoulders
Earle Merry Inc.
Earle Merry Inc.
Beginning at the Charlotte-Ferrisburg town line
beginning southward

MP 7.287
STA. 701+91.0
END PROJECT F 72 (1) 1949
PROJECT F 72-B (1928)

MP 5.62
STA. 749+00
END PROJECT F 72 (1) 1949
PROJECT F 72-B (1928)

MP 5.62 - 7.29

any further information concerning this project should be obtained from the DISTRICT ENGINEER, BUREAU OF PUBLIC ROADS.

SCALES

TITLE	1" = 400'
TYPICAL	1" = 20'
PLAN	1" = 80'
PROFILE HORIZONTAL	1" = 50'
PROFILE VERTICAL	1" = 10'
CROSS-SECTIONS	1" = 8'

APPROVED: [Signature] DATE: 4-1-55
APPROVED: [Signature] DATE: 4-1-55
APPROVED: [Signature] DATE: 4/1/55
APPROVED: [Signature] DATE: 4-1-55
APPROVED: [Signature] DATE: SEPT 12, 1950

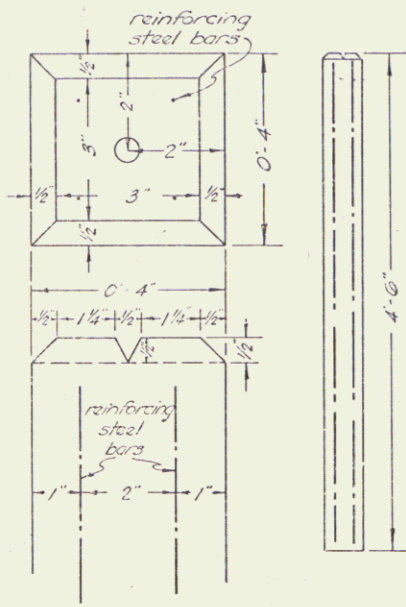
DEPARTMENT OF COMMERCE
BUREAU OF PUBLIC ROADS

APPROVED: _____ DATE: _____
DISTRICT ENGINEER

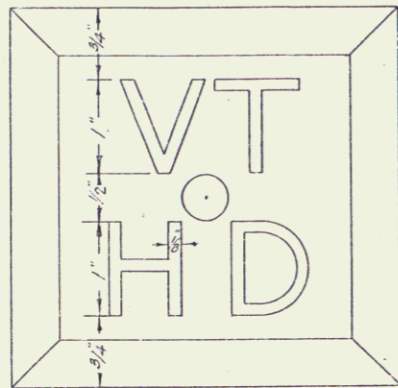
PROJECT F NO. 72 (7)
SHEET 0 OF 82 SHEETS

STEARNS R. JENKINS

NOTE: Boundary Markers
The design shown on this sheet
supercedes the one shown on
Construction Details Sheet



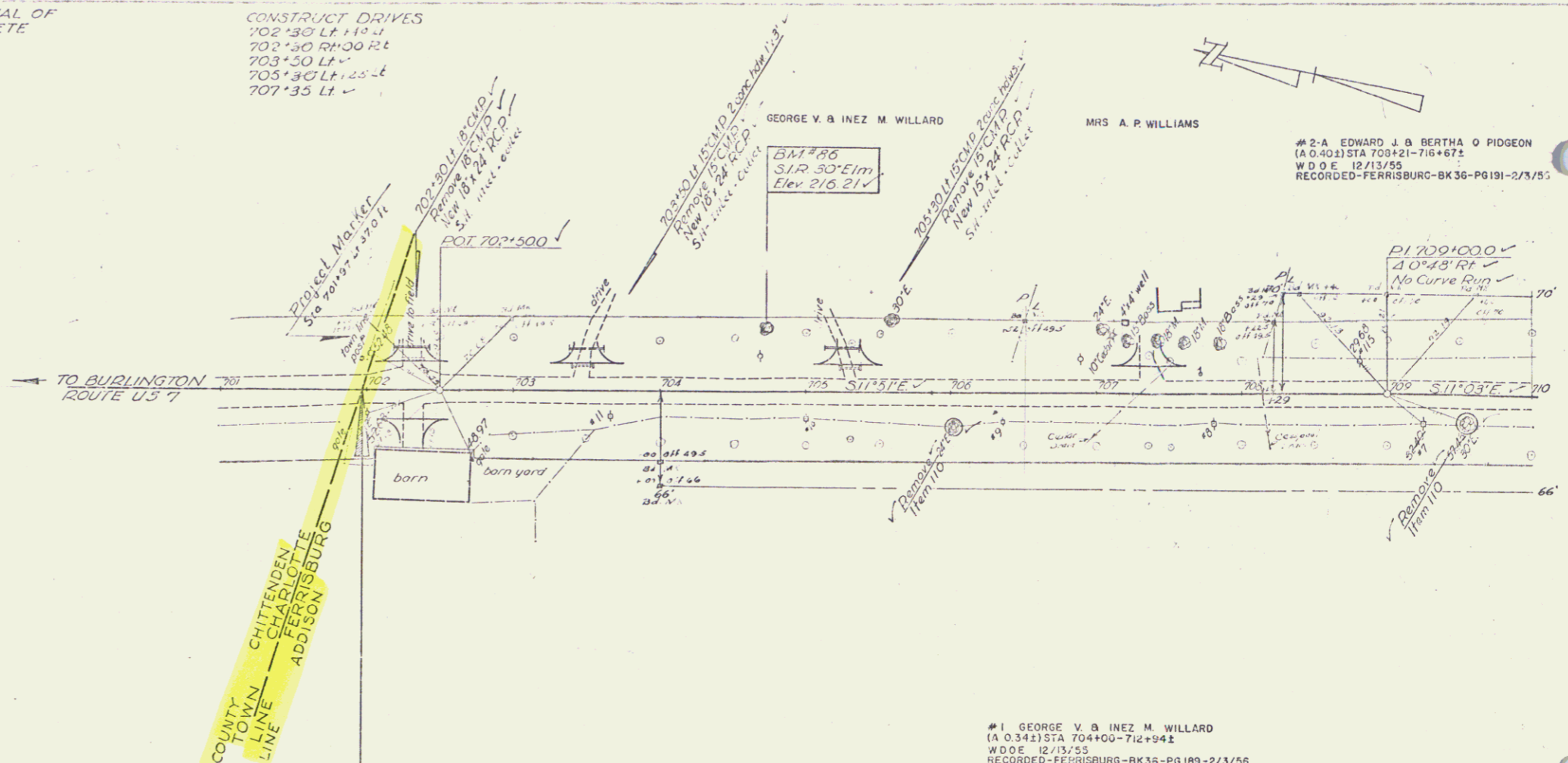
BOUNDARY MARKER
ITEM 507
To be constructed of concrete class B mod.
Item 401-B
4 reinforcing steel bars are 1/2" deformed
bars 4'-4" long.



Full size detail of letters
Letters to be V-sunk 1/8"

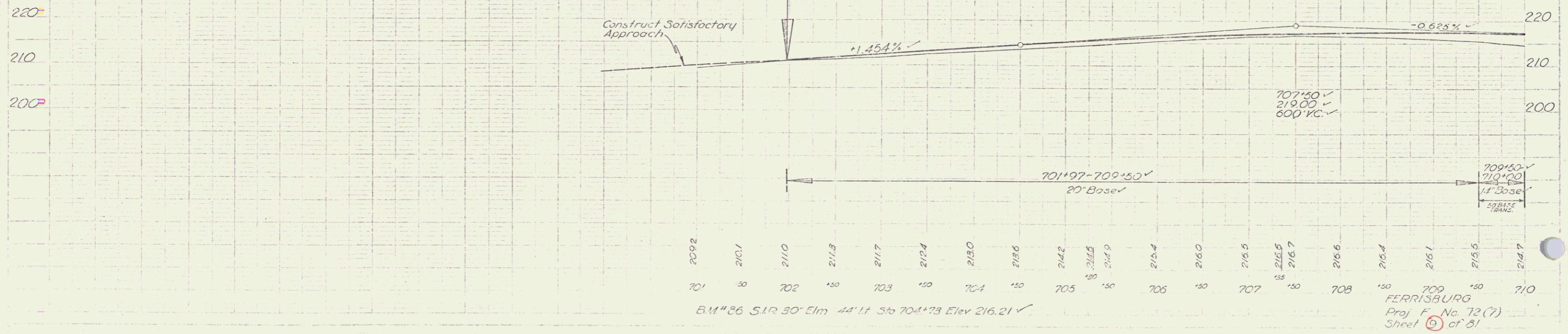
EXCAVATION AND REMOVAL OF
EXISTING CEMENT CONCRETE
PAVEMENT
701+97 - 710+00 ✓

CONSTRUCT DRIVES
702+50 Lt. 11' x 4"
702+50 Rt. 11' x 4"
703+50 Lt. ✓
705+30 Lt. 25' x 4"
707+35 Lt. ✓



#1 GEORGE V. & INEZ M. WILLARD
(A 0.342) STA 704+00 - 712+94.1
W.D.E. 2/13/55
RECORDED - FERRISBURG - BK 35 - PG 189 - 2/13/55

STA. 701+97 =
BEGIN PROJ. F 72(?)
701+85 Project F 72(B)
(1928)



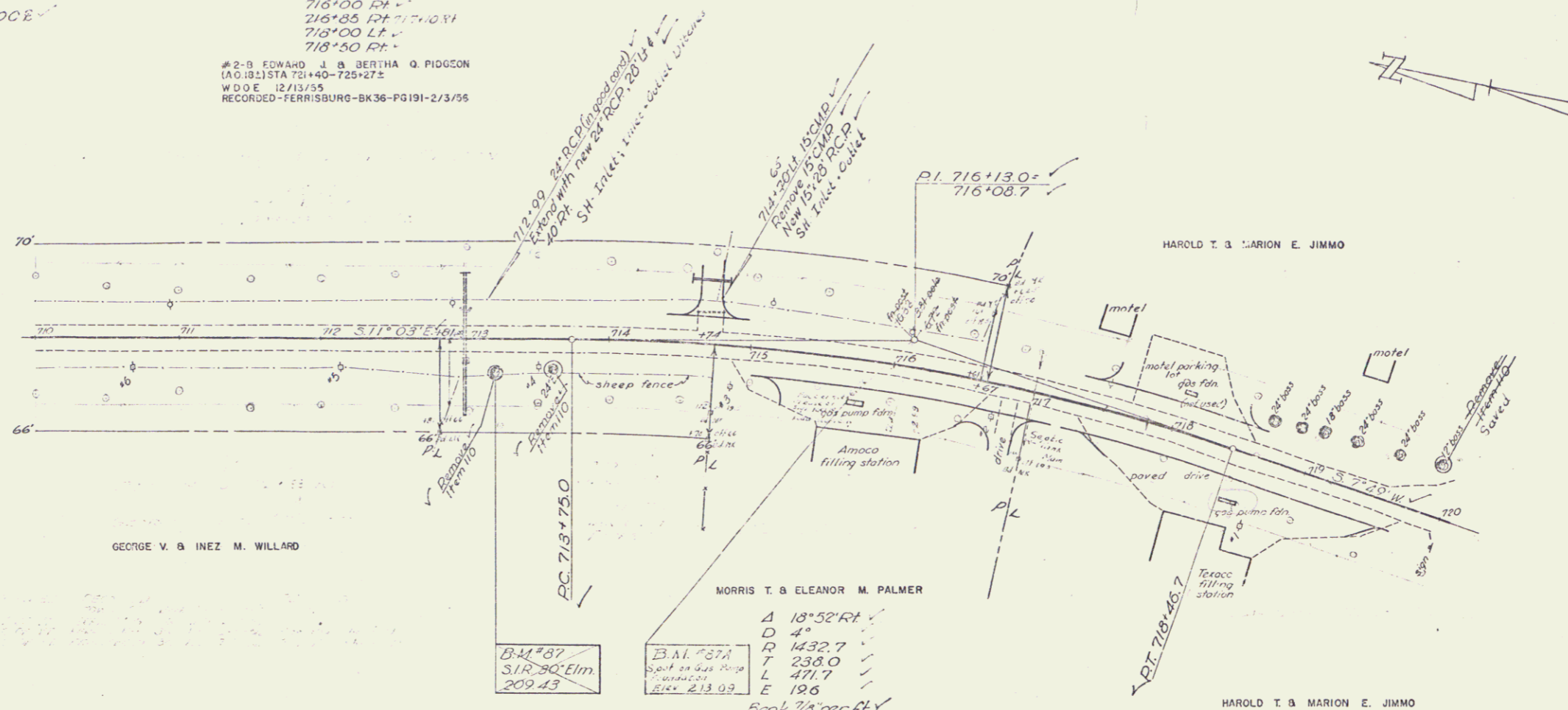
FERRISBURG
Proj. F No. 72(?)
Sheet 9 of 81

EXCAVATION AND REMOVAL OF EXISTING CEMENT CONCRETE PAVEMENT
714+70 - 720+00 E

CONSTRUCT DRIVES
714+20 L.F. + C&L
716+00 R.F. +
716+85 R.F. + 10' S
718+00 L.F. +
718+50 R.F. +

#2-B EDWARD J. & BERTHA Q. PIDGSON
(A.O.B.) STA 71+40-725+27.2
W.D.E. 12/13/55
RECORDED - FERRISBURG - BK36-PG191-2/3/55

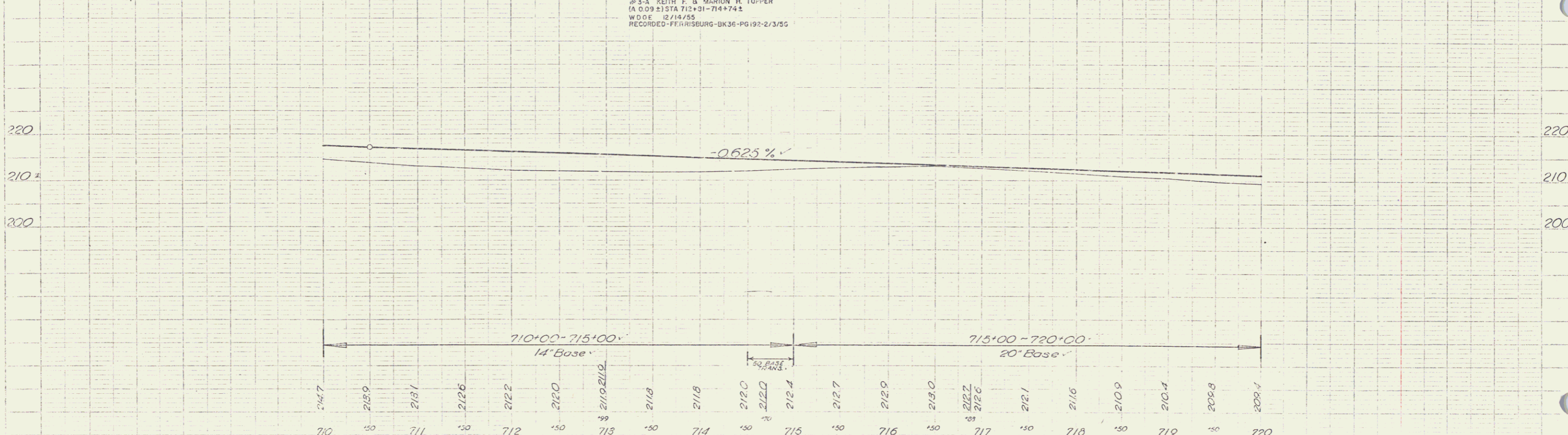
DATE	1/23
BY	WILLIAMS
CHECKED	WILLIAMS
SCALE	AS SHOWN



B.M. #87
S/R 30' Elm
209.43

B.M. #87A
Spot on gas pump foundation
25' RT. Sta 715+21, Elev 209.43

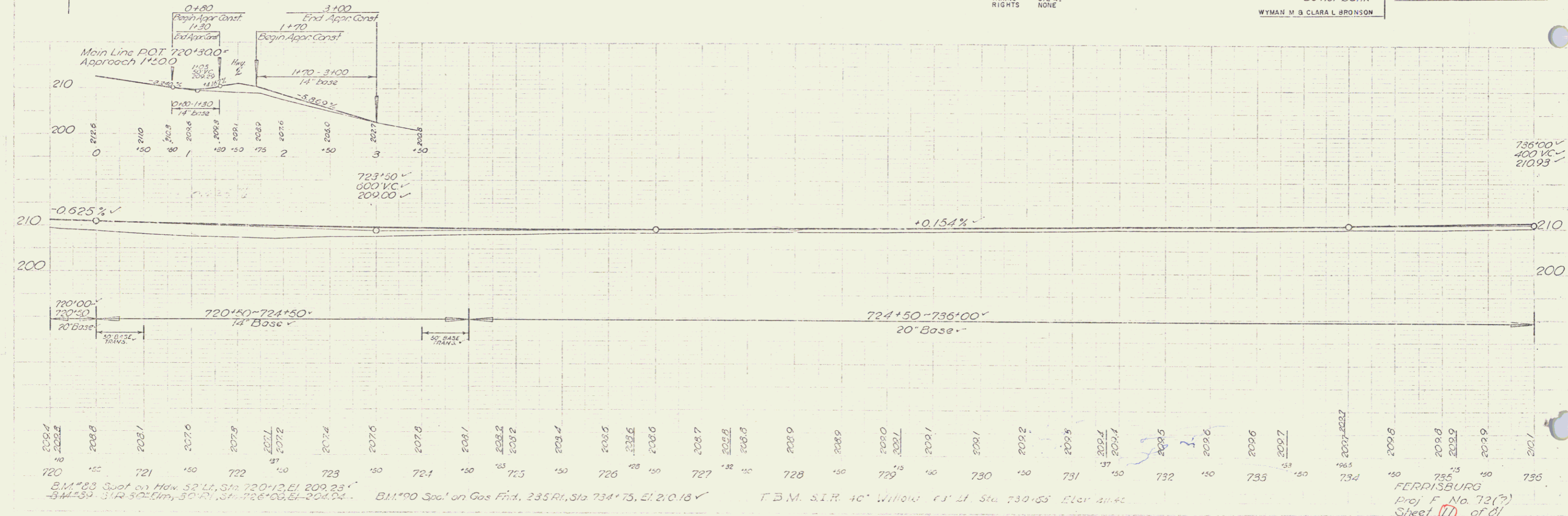
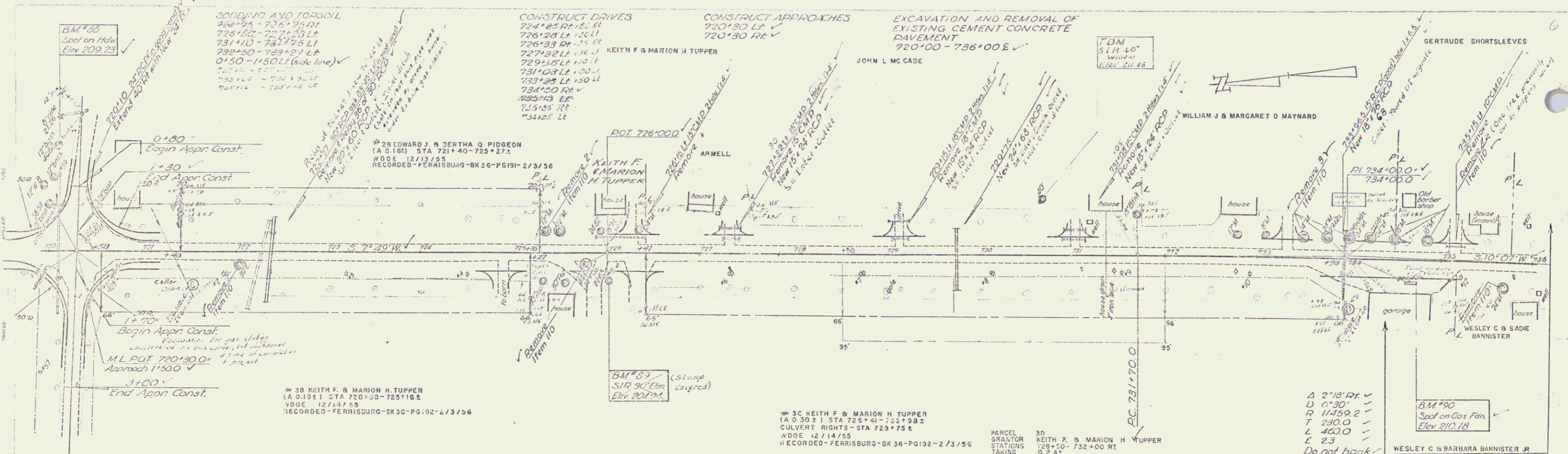
#3-A KEITH F. & MARION H. TUPPER
(A.O.B.) STA 712+31-714+74.2
W.D.E. 12/14/55
RECORDED - FERRISBURG - BK36-PG192-2/3/55



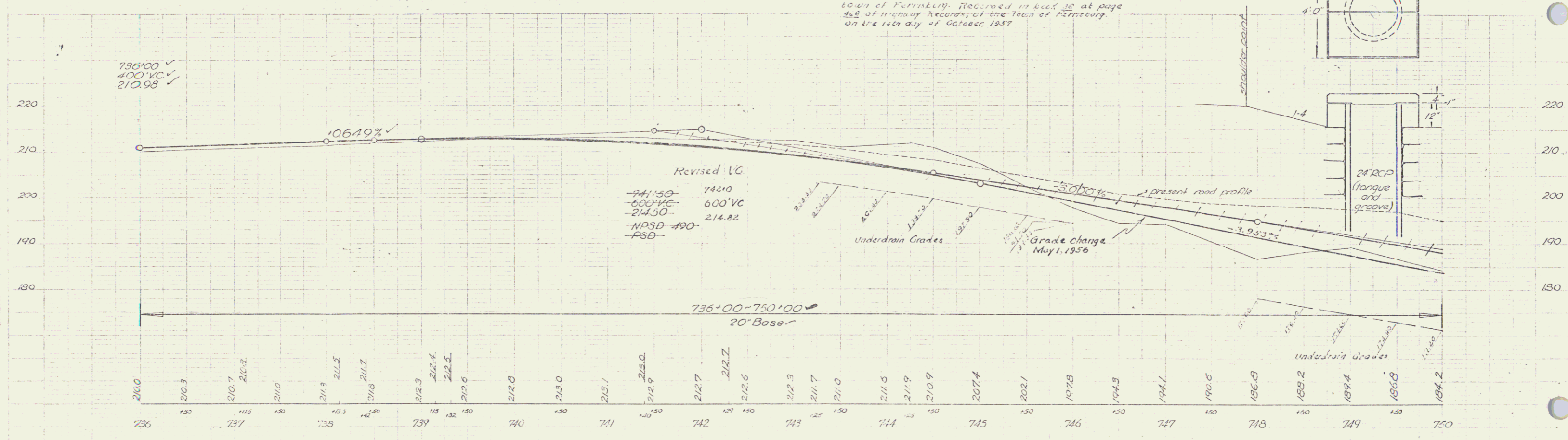
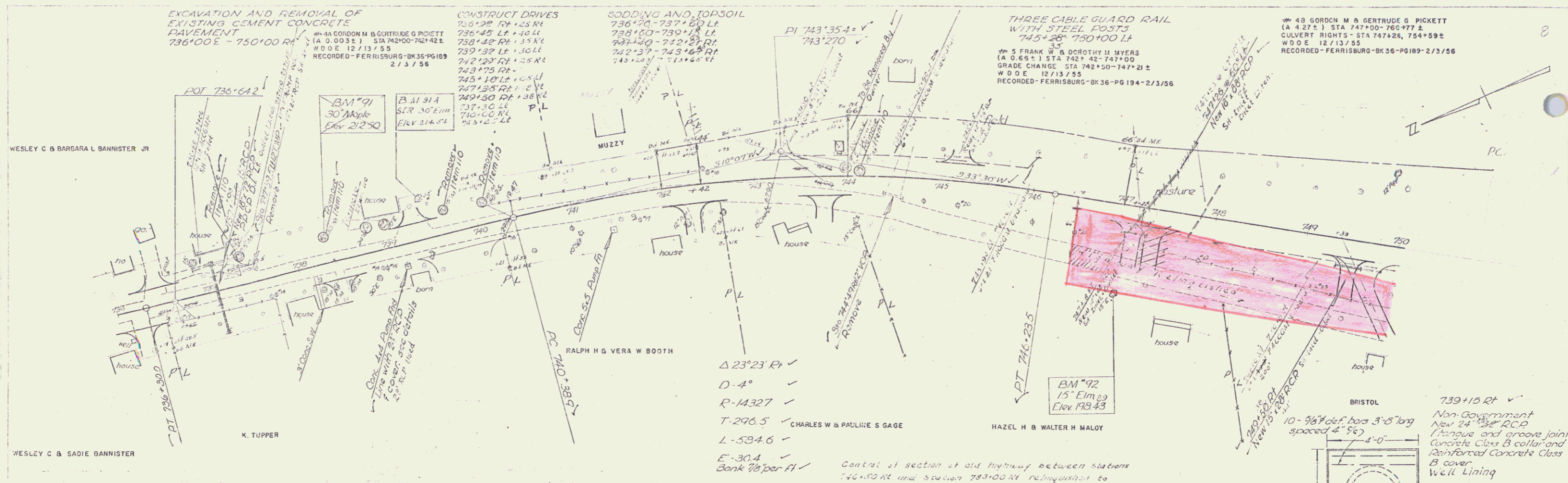
B.M. #87 S/R 30' Maple 25' RT. Sta 715+21, Elev 209.43

B.M. #87A Spot on gas pump foundation 25' RT. Sta 715+21, Elev 209.43

FERRISBURG
Proj. No. 72(?)
Sheet 10 of 81

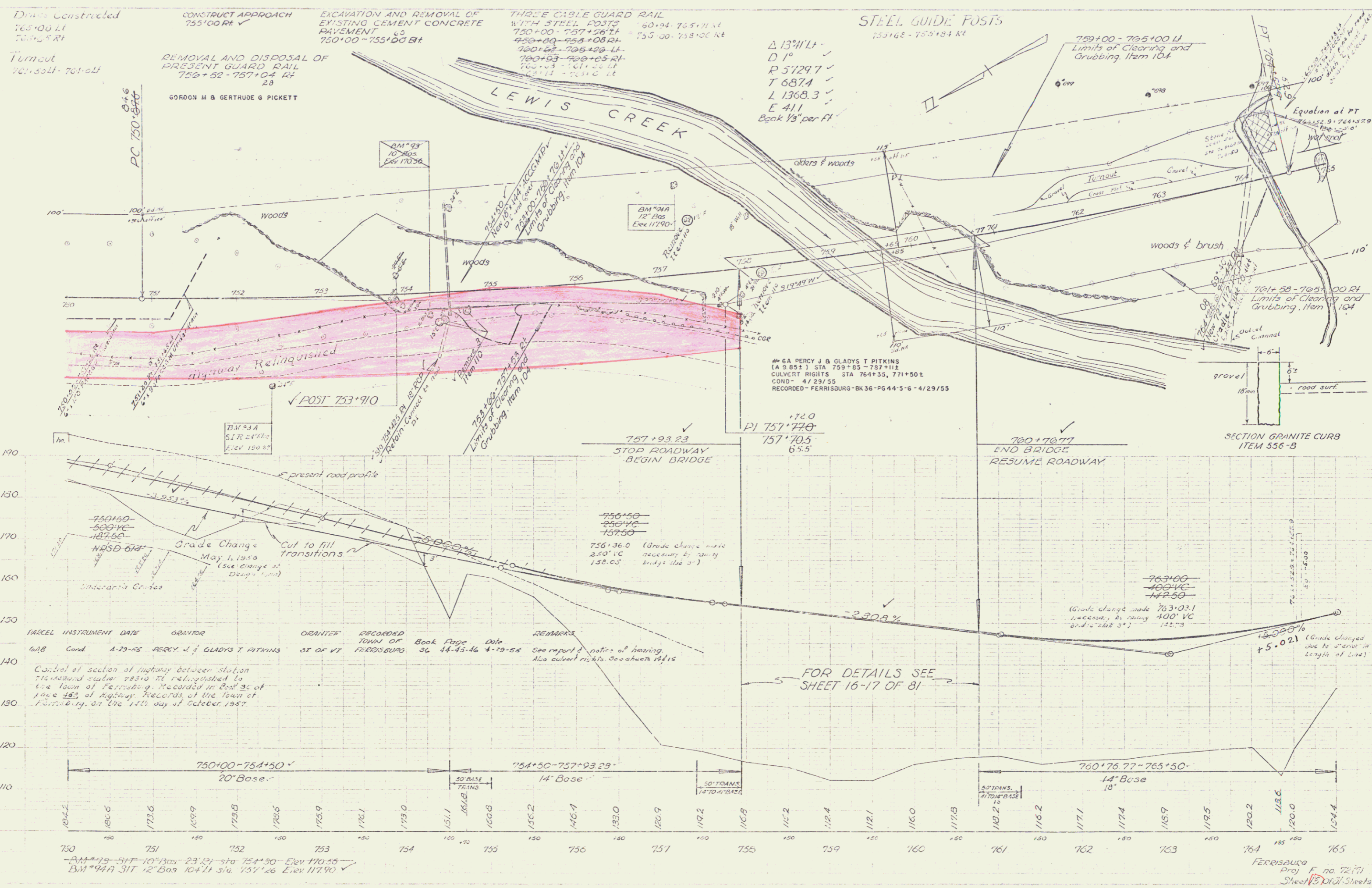


B.M. #83 Spot on Hwy 52' Lt. Sta 720+12. El. 209.23
 B.M. #50 S.I.R. 50' Elm. Sta 726+00. El. 204.04
 B.M. #90 Spot on Gas Fnd. 235' Rt. Sta 734+75. El. 210.18
 T.B.M. S.I.R. 40' Willow E.S. Lt. Sta 730+55. El. 211.42
 FERRISBURG
 Proj. F. No. 72(?)
 Sheet 11 of 81



BM #91 SIT 30' Maple 25' 11" Sta 736+34 Elev 212.50
 BM #92 SIT 15' Elm 24' Sta 747+04 Elev 198.45 198.89
 BM #1A SER 30' Elm 38' 2" Sta 747+10 Elev 214.74

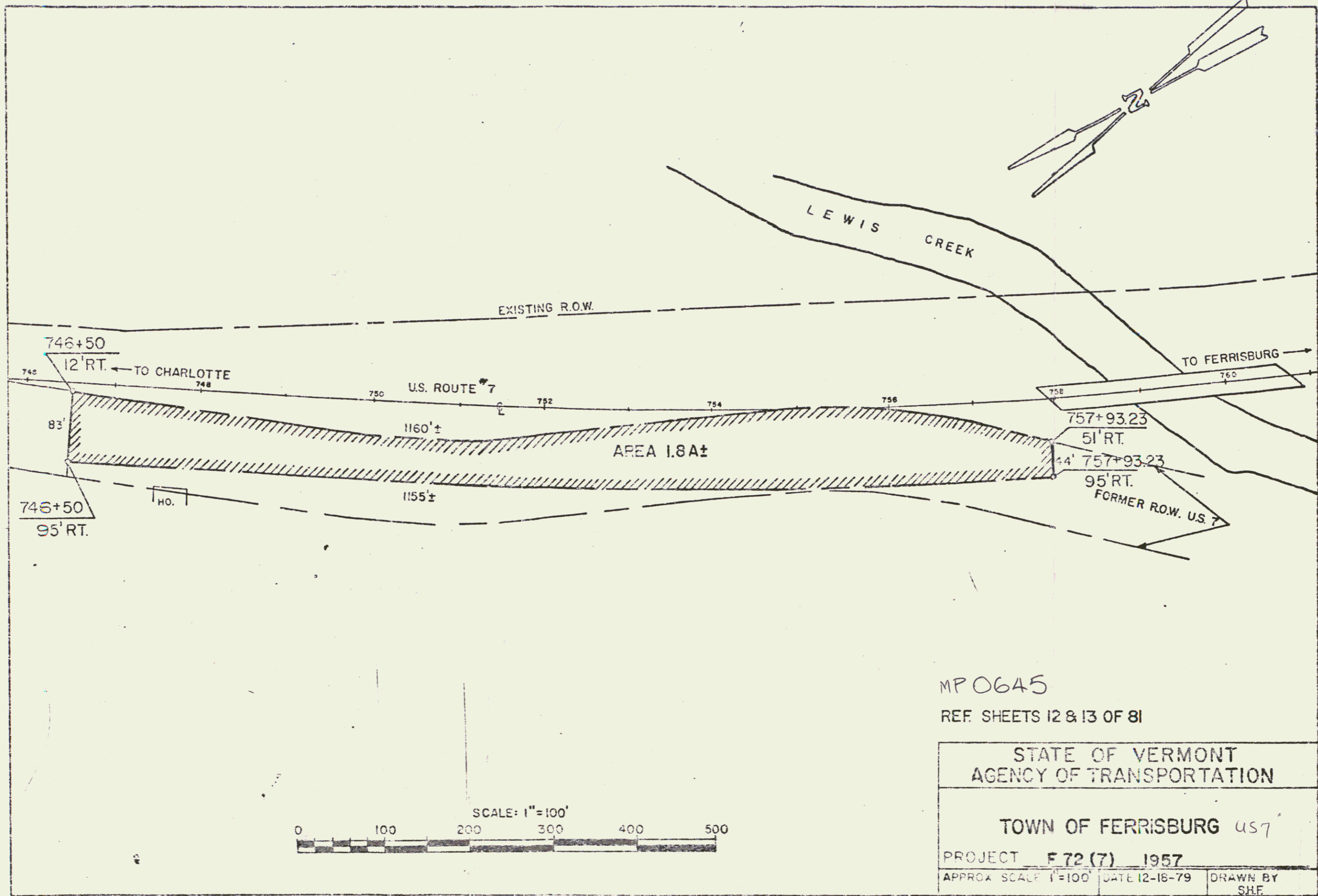
FERRISBURG
 Proj. E. no 72(7)
 Sheet 5 of 12 Sheets



DRAWING
 6-5-54
 CHECKED
 6-27
 6-29
 DRAWING
 6-29

BM #93 10' Bas Elev 110.56
 BM #94 12' Bas Elev 117.90
 BM #95 51' Bas Elev 150.87
 BM #96 51' Bas Elev 157.26
 Ferrisburg Proj. No. 72771
 Sheet 13 of 13

6

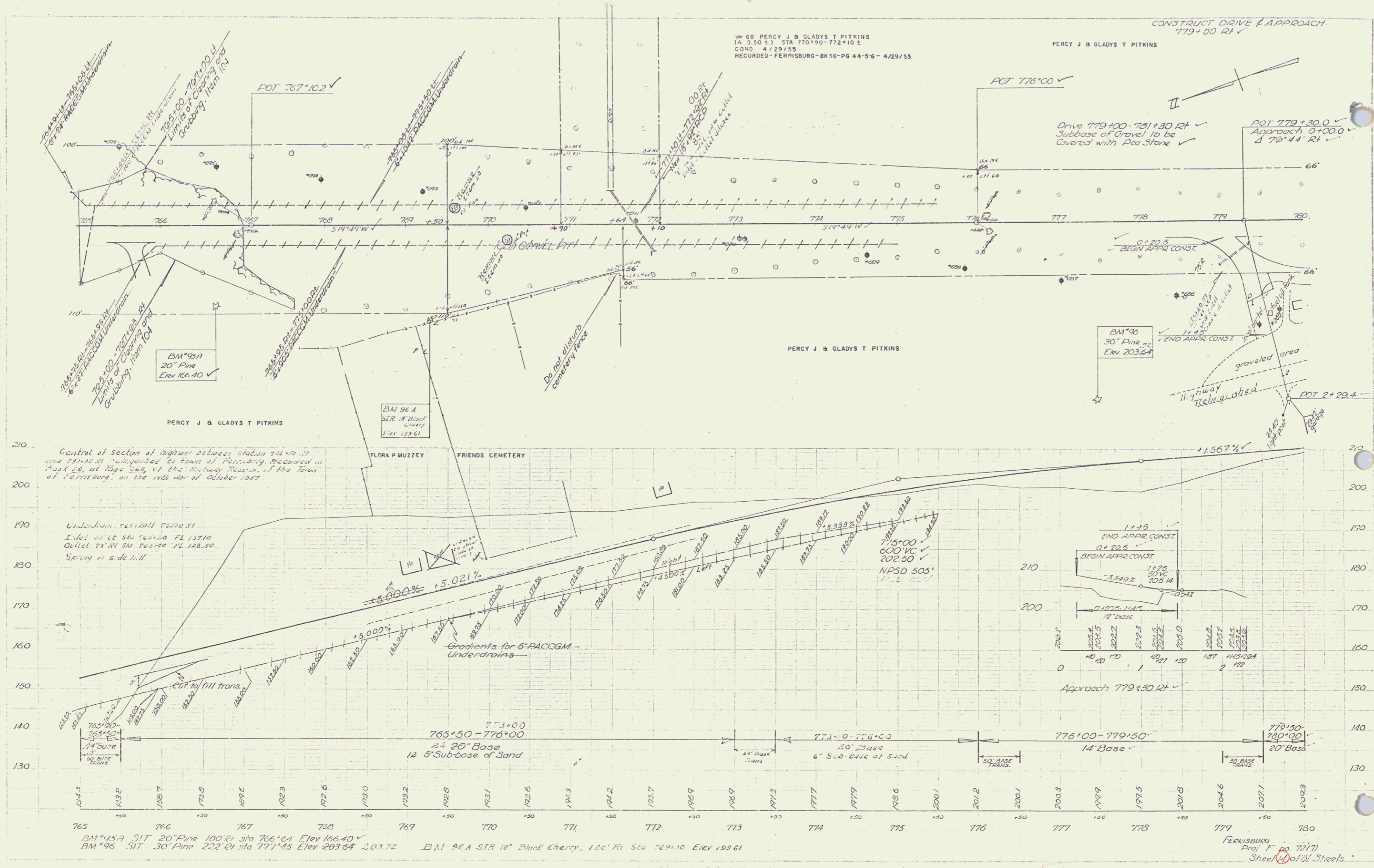


MPO645
 REF. SHEETS 12 & 13 OF 81

STATE OF VERMONT AGENCY OF TRANSPORTATION		
TOWN OF FERRISBURG 457		
PROJECT F 72 (7) 1957		
APPROX. SCALE 1"=100'	DATE 12-18-79	DRAWN BY SHE.

(13A)

7



Construct Turnout
782+00 - 786+50 RT

CONSTRUCT DRIVE
781+30 RT V

CONSTRUCT APPROACH
784+00 RT V
787+65 LT

EXCAVATION AND REMOVAL OF
EXISTING CEMENT CONCRETE
PAVEMENT
783+25 RT - 786+75 RT
35' - 791+18.4

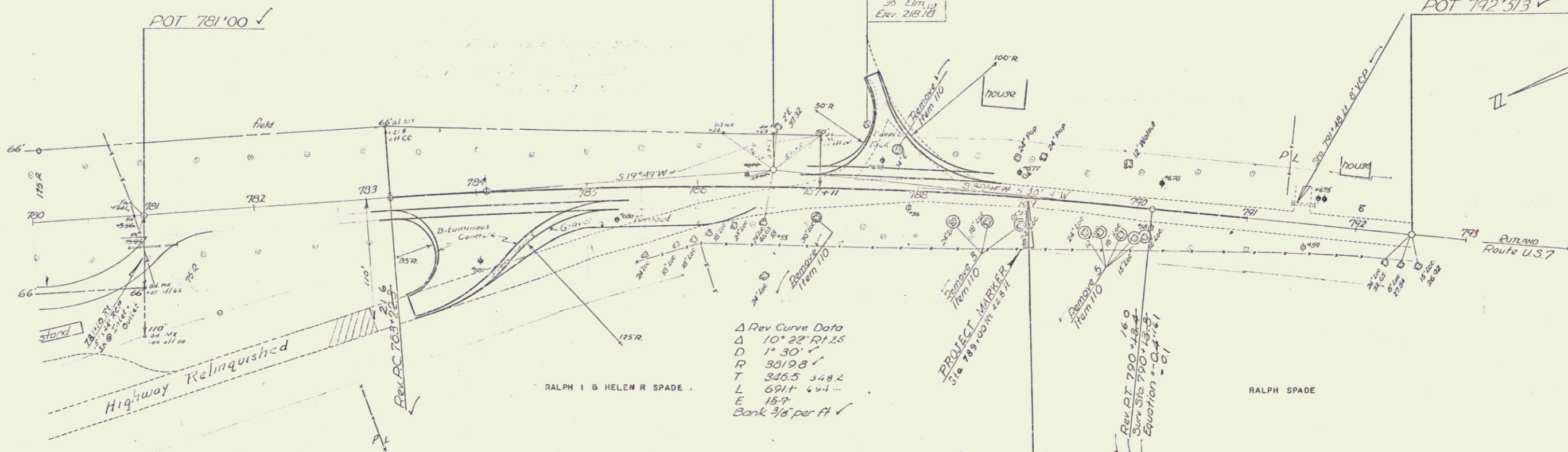
Rev PI 790+60
SURV 786+65.2
PI 786+68.8
786+67.3
Δ 10° 22' RT
D 2°

EM #97
35' Elm.
Elev. 218.10

MRS CHARLOTTE F BOUTWELL

POT 792+513 ✓

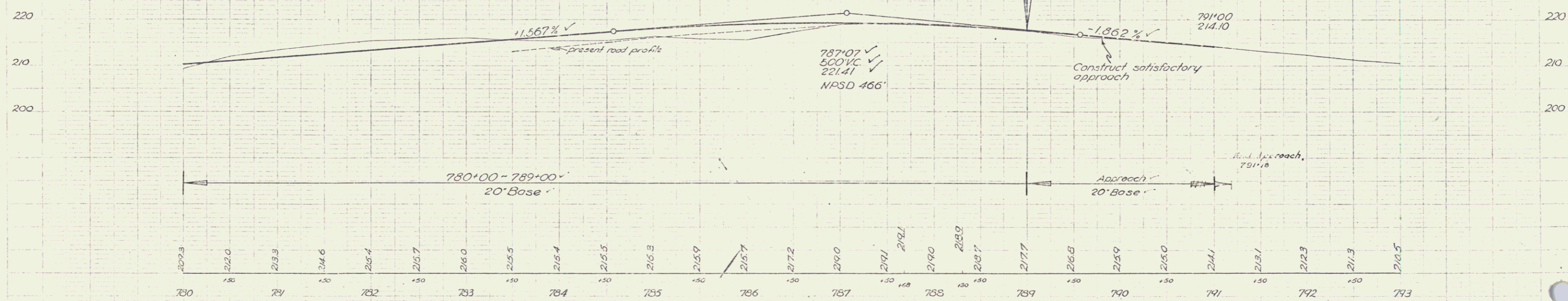
6-49
6-49
Drawing
72



Control of section of highway between station 782+00 and 783+00 RT relinquished to the Town of Farmington. Recorded in Book 90, of page 128, of the Highway Records of the town of Farmington, at the 14th day of October, 1927

789+00 =
END PROJECT F 72(?)
794+53
Project F 72(B) (built 1928)

6-49
6-49
Drawing



BM #97 SIR 35' Elm 52' Lt sta 787+50 Elev 218.19

FERRISSBURG
Proj F 72(?)
Sheet 1 of 2 Sheets