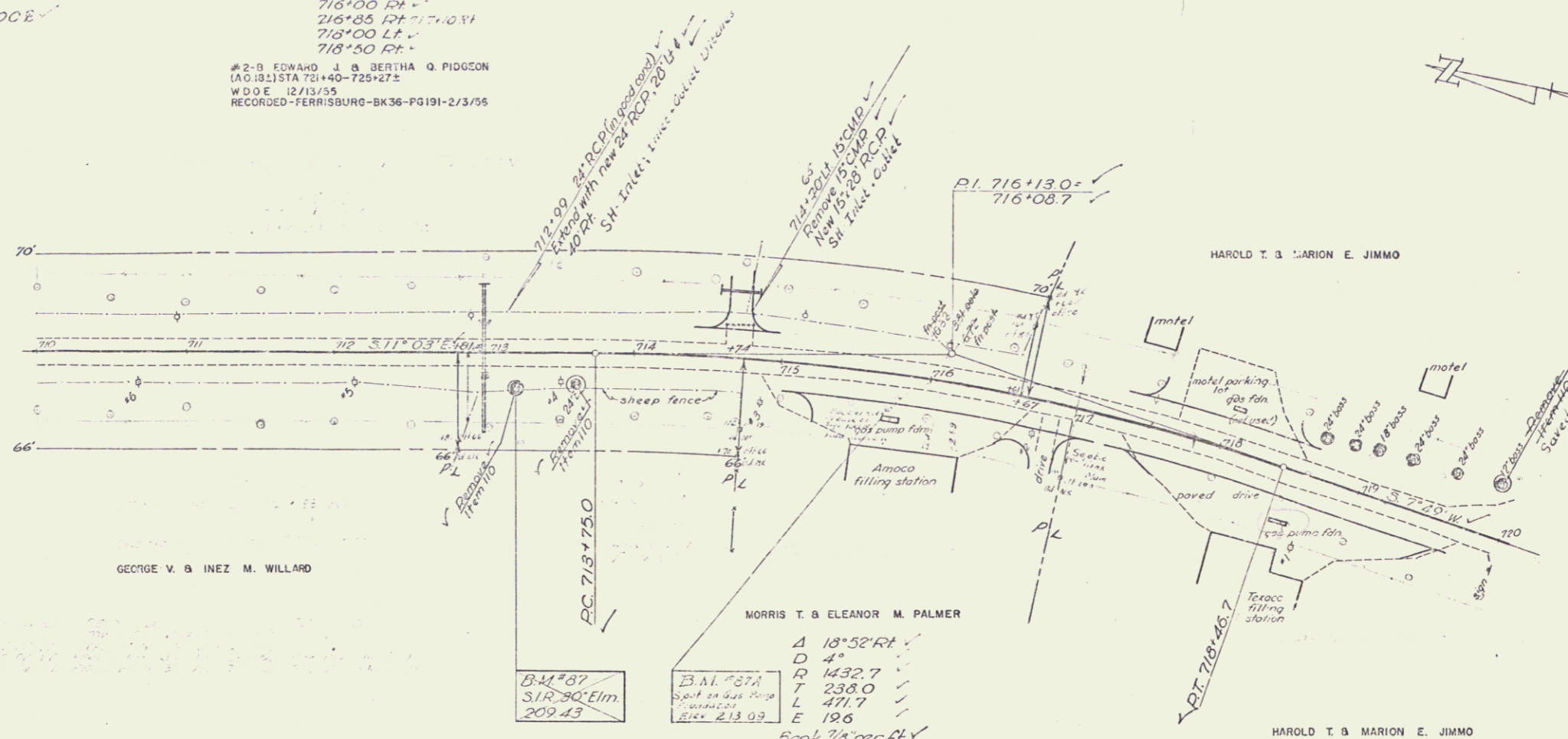


EXCAVATION AND REMOVAL OF EXISTING CEMENT CONCRETE PAVEMENT
714+70 - 720+00 E

CONSTRUCT DRIVES
714+20 L.F. + C&L
716+00 R.F. +
716+85 R.F. + 17+10 S1
718+00 L.F. +
718+50 R.F. +

#2-B EDWARD J. & BERTHA Q. PIDGSON
(A.O.B.) STA 71+40-725+27.2
W.D.E. 12/3/55
RECORDED - FERRISBURG - BK36-PG191-2/3/55

#3-A KEITH F. & MARION H. TUPPER
(A.O.B.) STA 712+31-714+74.2
W.D.E. 12/14/55
RECORDED - FERRISBURG - BK36-PG192-2/3/55



B.M. #87
S/R 30' Elm
209.43

B.M. #87A
Spot on gas pump foundation
25' RT. Sta 715+21, Elev 209.43

B.M. #87A
Spot on gas pump foundation
25' RT. Sta 715+21, Elev 209.43

Bank 7.8 per ft.



B.M. #87 S/R 30' Maple 25' RT. Sta 715+21, Elev 209.43
B.M. #87A Spot on gas pump foundation 25' RT. Sta 715+21, Elev 209.43

FERRISBURG
Proj. No. 72(?)
Sheet 10 of 81