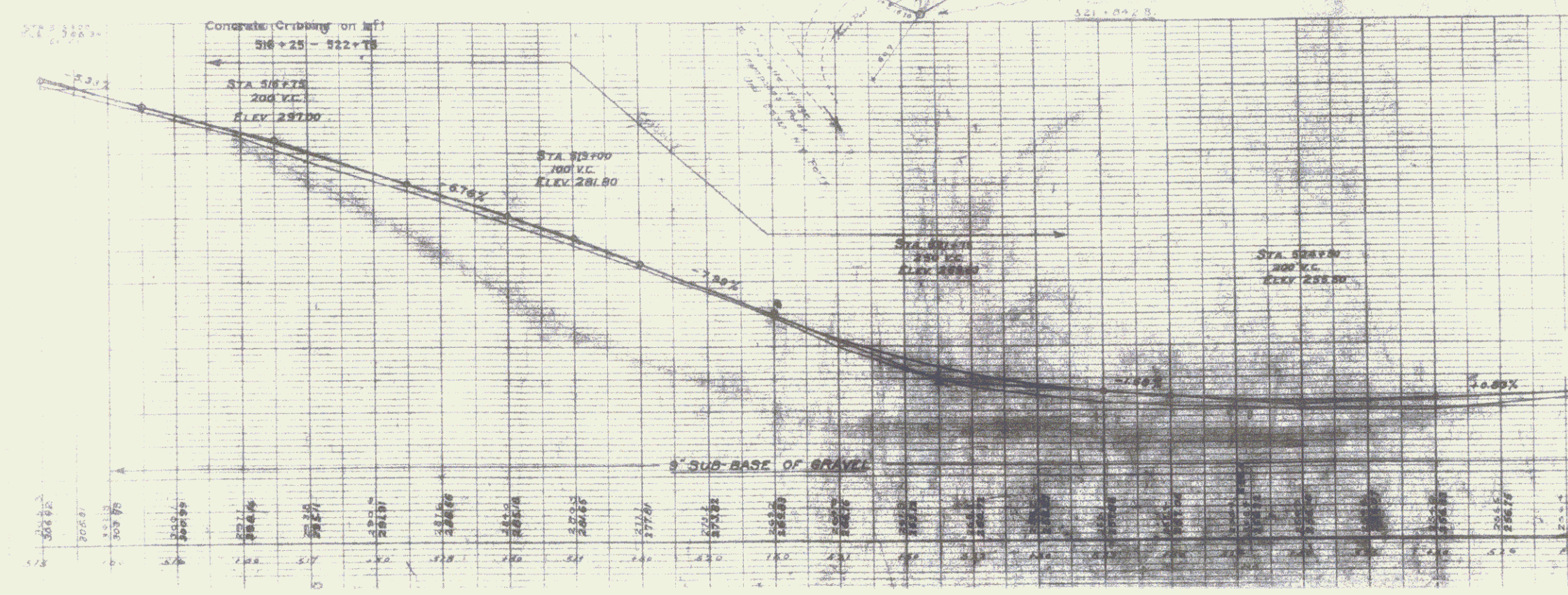




Pin# 99R443

MP Charlotte 3.022-0.00
 Ferrisburgh 7.297-3.014



SECTION SHOWING
 CONCRETE CURBING TRENCH
 ON LEFT STA 518+25 - STA 522+75

If curb members are cast in field, proportions of mix to be 1 1/2 parts Portland Cement, 2 parts fine aggregate, 3 parts coarse aggregate, providing opening.

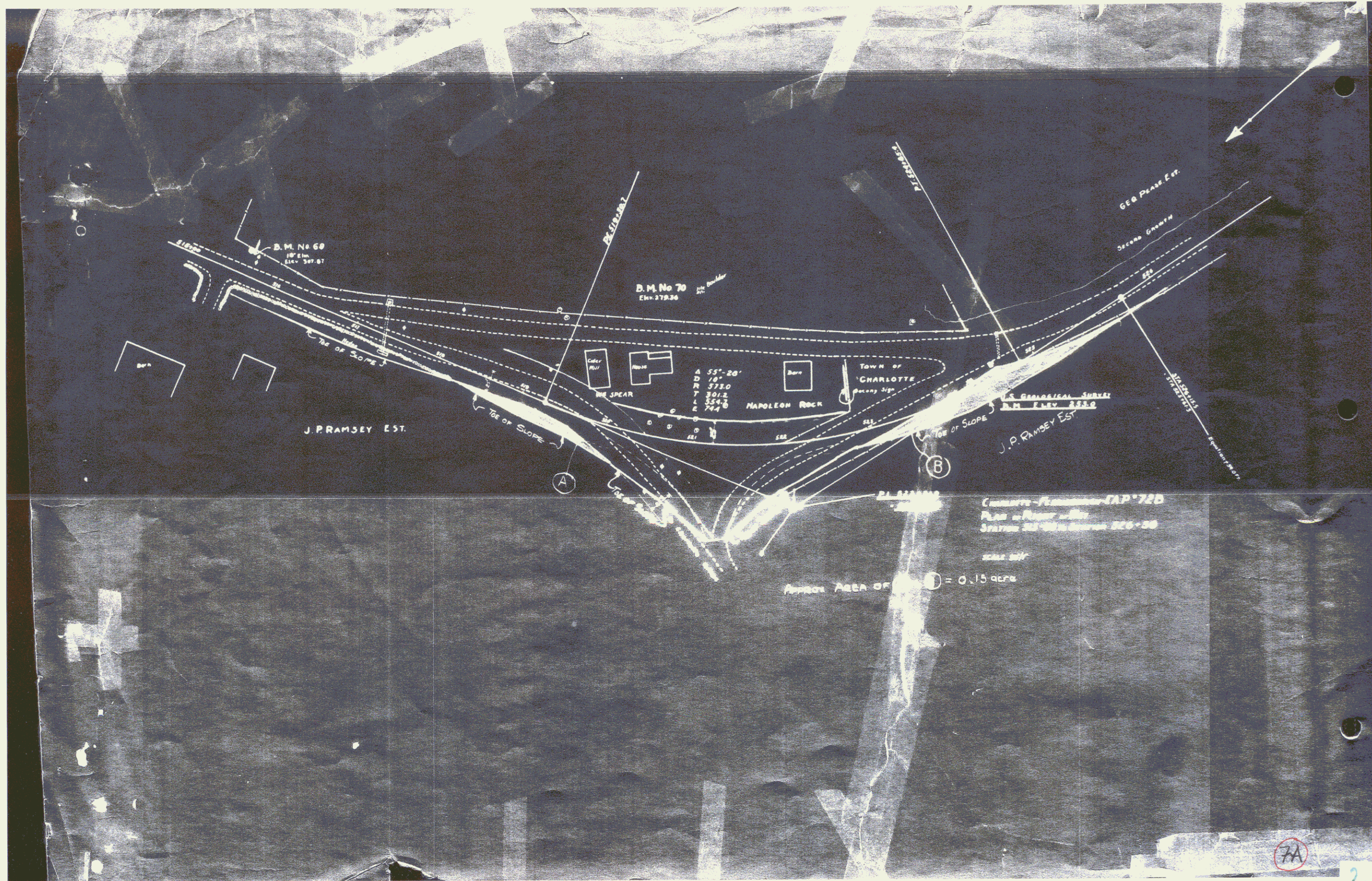
APPROXIMATE QUANTITIES
 Concrete curbing - from 50' - 500' cu ft
 Reinforcing steel - 13.26' lb

Project No. F.A.P. 725
 US Rt. 7

TOWNS OF CHARLOTTE-FERRISBURGH

Date: 1/1/28

Sheet 7



7A

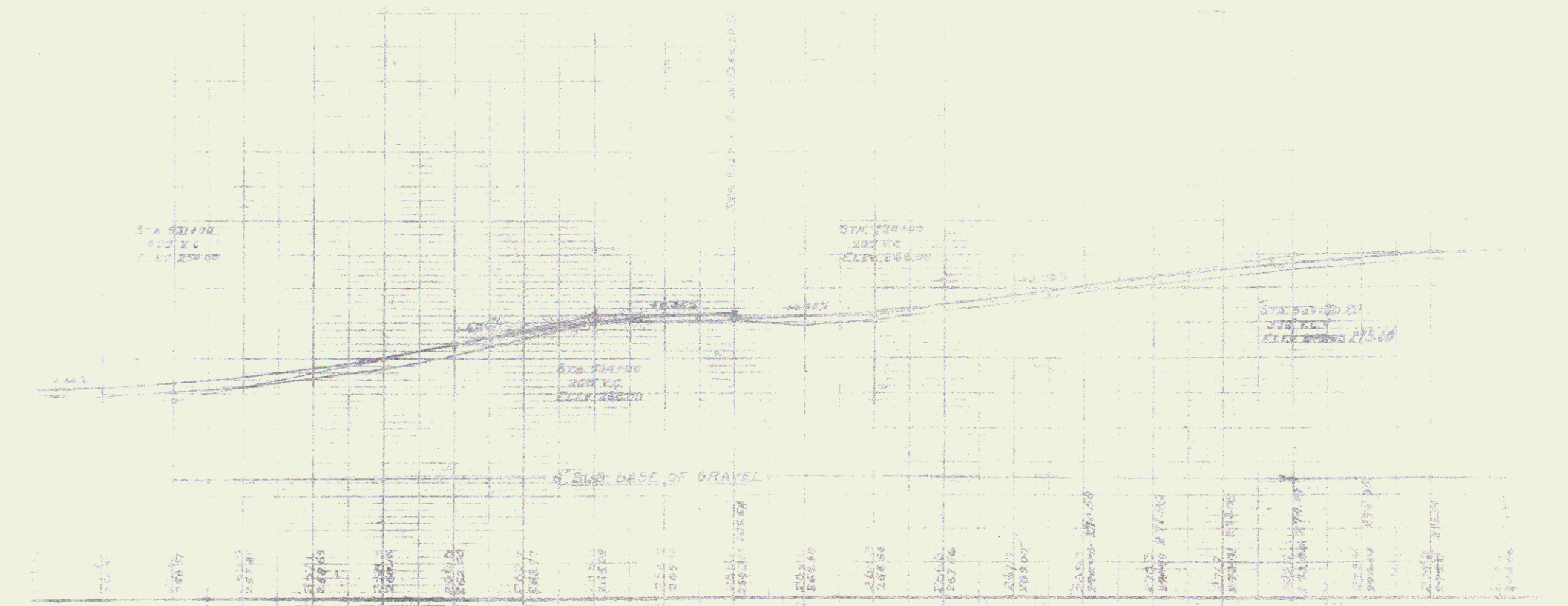
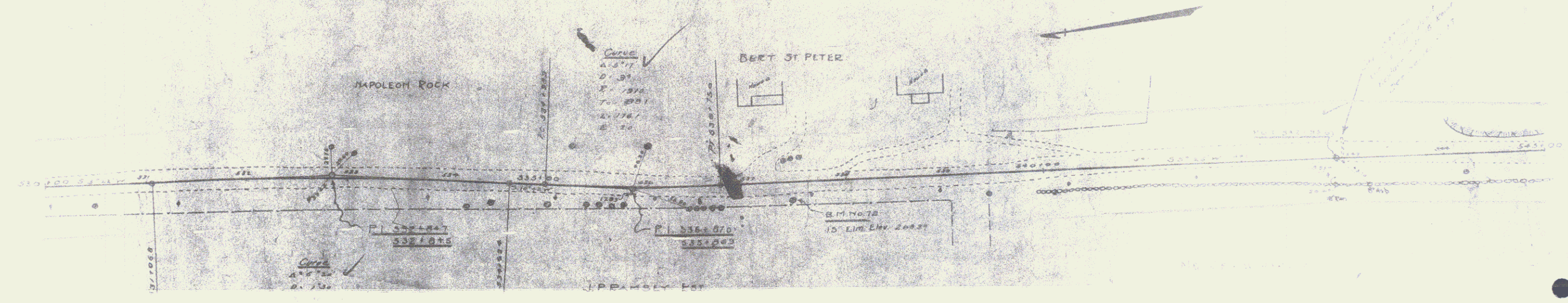
18" REIN. CONCRETE PIPE CULVERT
 STA 535+00 TO 535+50
 CONCRETE CLASS A(1-2-4)
 REINFORCING STEEL

NEW CULVERTS REQUIRED
 STA 535+00 18" REIN. CONCRETE PIPE CULVERT 22 LIN FT
 CONCRETE CLASS A(1-2-4)
 REINFORCING STEEL
 STA 535+50 18" REIN. CONCRETE PIPE CULVERT 22 LIN FT
 CONCRETE CLASS A(1-2-4)
 REINFORCING STEEL

TOP BASE OF GRAVEL REQUIRED
 STA 535+00 TO 535+50
 15" LIME CH. 20000
 1500

DRIVEWAY CULVERTS
 STA 537+10 LEFT RELAY 25 FT OF PIPE
 CONCRETE CLASS B(1-2-5) 140 Yds.
 STA 538+00 LEFT RELAY 20 FT OF PIPE
 CONCRETE CLASS B(1-2-5) 140 Yds.

PROJECT NO.	112	YEAR	1961
DATE	10-27-61	SCALE	1" = 40'



8

3

ITEM	QUANTITY	UNIT	PRICE	TOTAL
Concrete Class PAU-14-D	24	cu yd		
Reinforcing steel	51	100 lb		
Concrete Class PAU-24-D	24	cu yd		
Reinforcing steel	51	100 lb		
Concrete Class PAU-24-D	24	cu yd		
Reinforcing steel	51	100 lb		

NEW CULVERTS REQUIRED

Sta 561.75 - 10' Reinforced Concrete Pipe Culvert - 36" dia
 Concrete Class PAU-14-D 24 cu yd
 Reinforcing steel 51 100 lb

Sta 568.00 - 10' Reinforced Concrete Pipe Culvert - 36" dia
 Concrete Class PAU-24-D 24 cu yd
 Reinforcing steel 51 100 lb

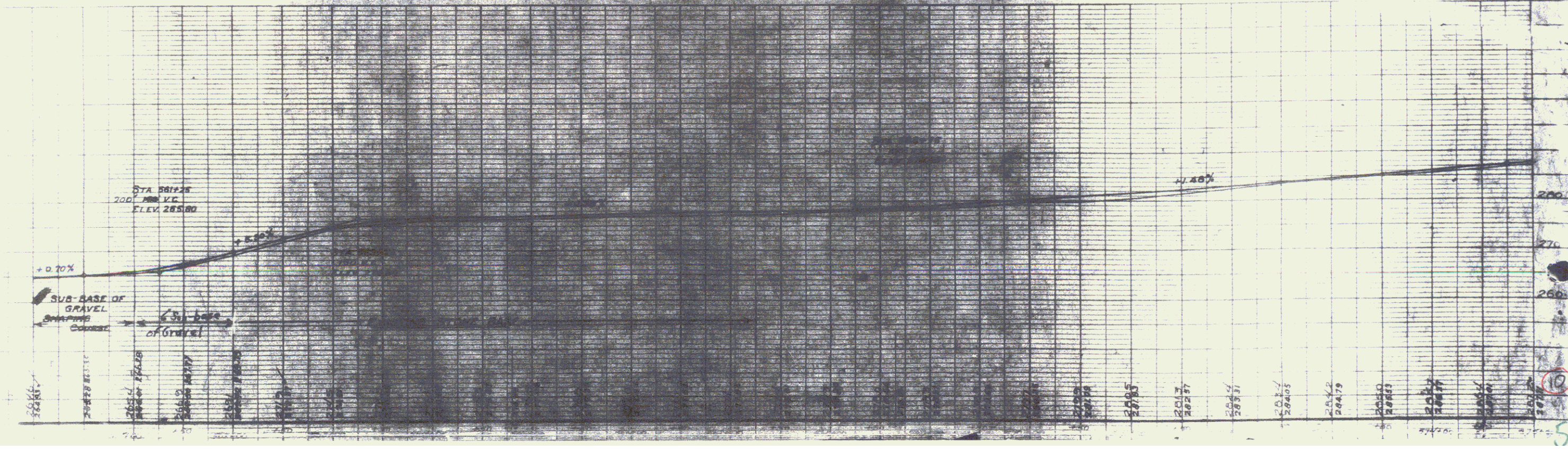
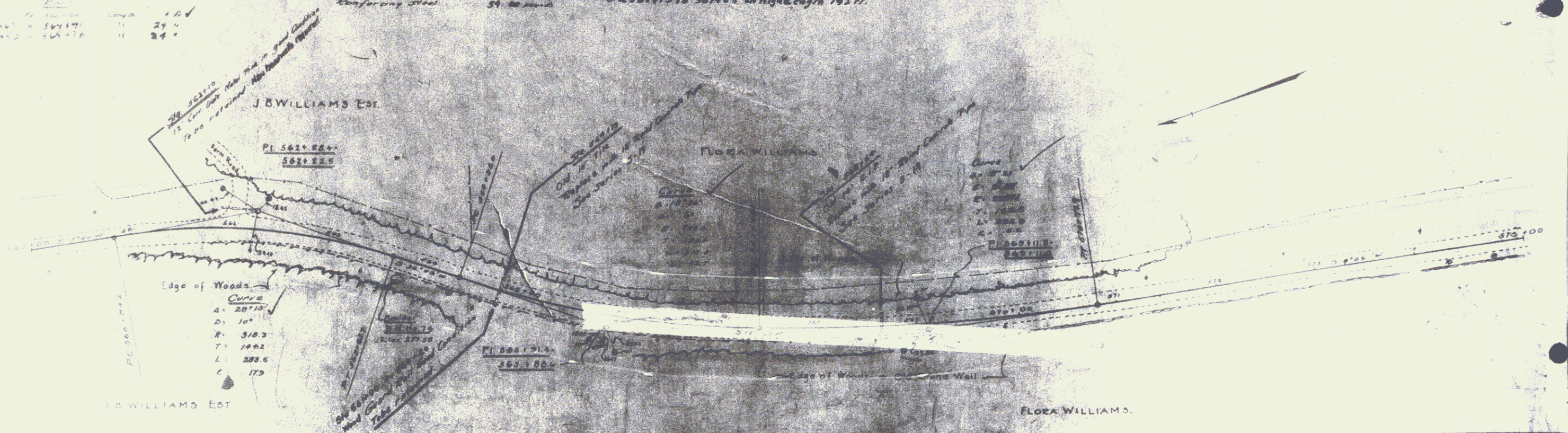
SUB-BASE OF GRAVEL REQUIRED

Sta 561.75 to 567.65 in Right-of-Way 192 ft.
 6" Sub-base of Gravel

DRIVENAY CULVERTS

Sta 568.00 to 568.00 - New Rectangular Culvert

NO.	DATE	BY	REVISION
1	7-1-74	DR	ISSUE FOR CONSTRUCTION



WOOD GUARD RAIL REQUIRED

Sta	Length	Depth	Notes
522+00 to 522+20	20'	24"	
522+20 to 522+40	20'	24"	
522+40 to 522+60	20'	24"	
522+60 to 522+80	20'	24"	
522+80 to 523+00	20'	24"	

NEW CULVERTS REQUIRED

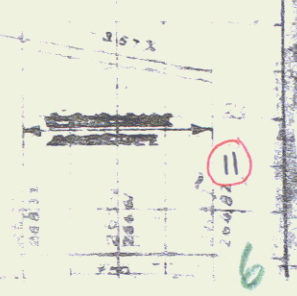
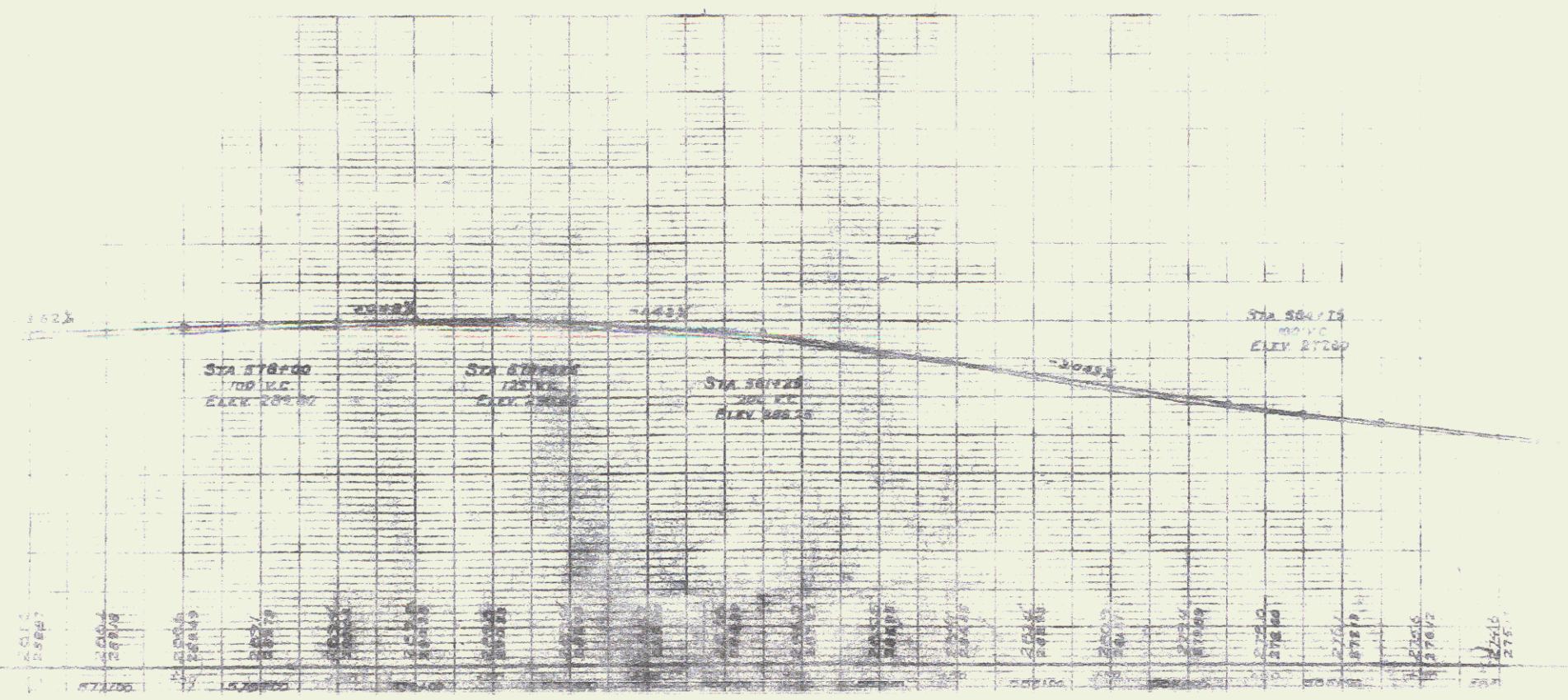
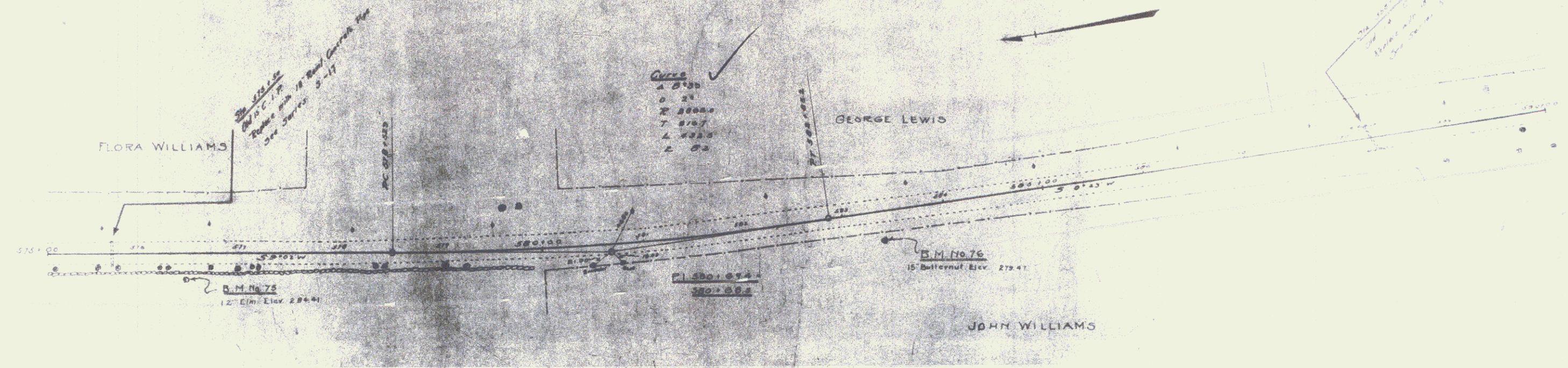
Sta	Description	Length	Notes
Sta 522+00	18" Rein Concrete Pipe Culvert	20'	Concrete Class B (1-2-4) Reinforcing Steel
Sta 522+20	18" Rein Concrete Pipe Culvert	20'	Concrete Class B (1-2-4) Reinforcing Steel
Sta 522+56	18" Rein Concrete Pipe Culvert	20'	Concrete Class A (1-2-4) Reinforcing Spec

TOP BASE OF GRAVEL REQUIRED

Sta	Length	Notes
522+00 to 522+20	20'	
522+20 to 522+40	20'	
522+40 to 522+60	20'	
522+60 to 522+80	20'	
522+80 to 523+00	20'	

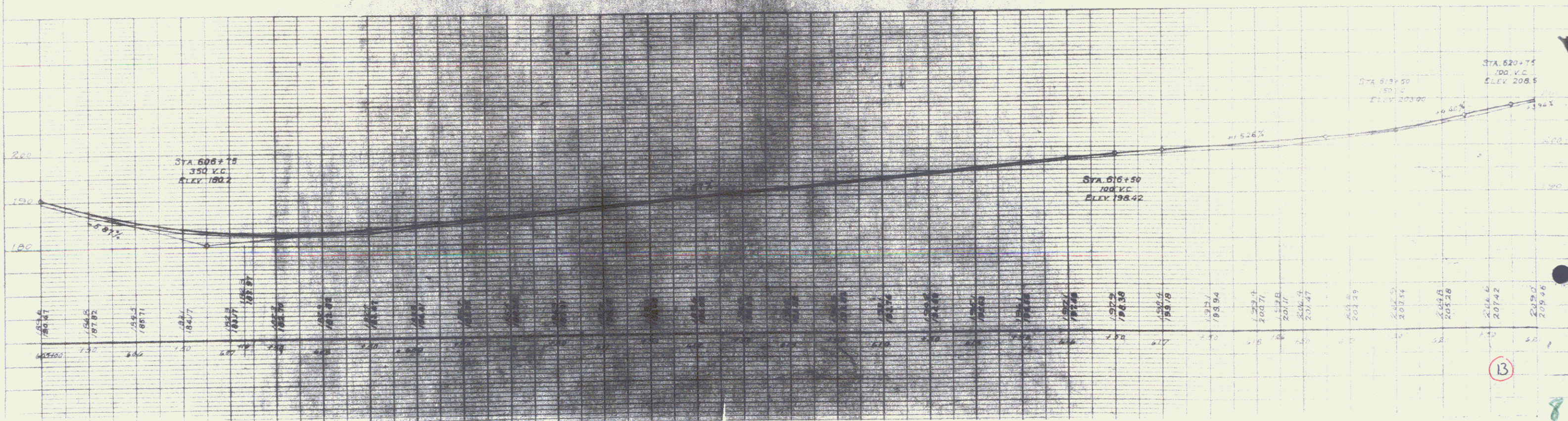
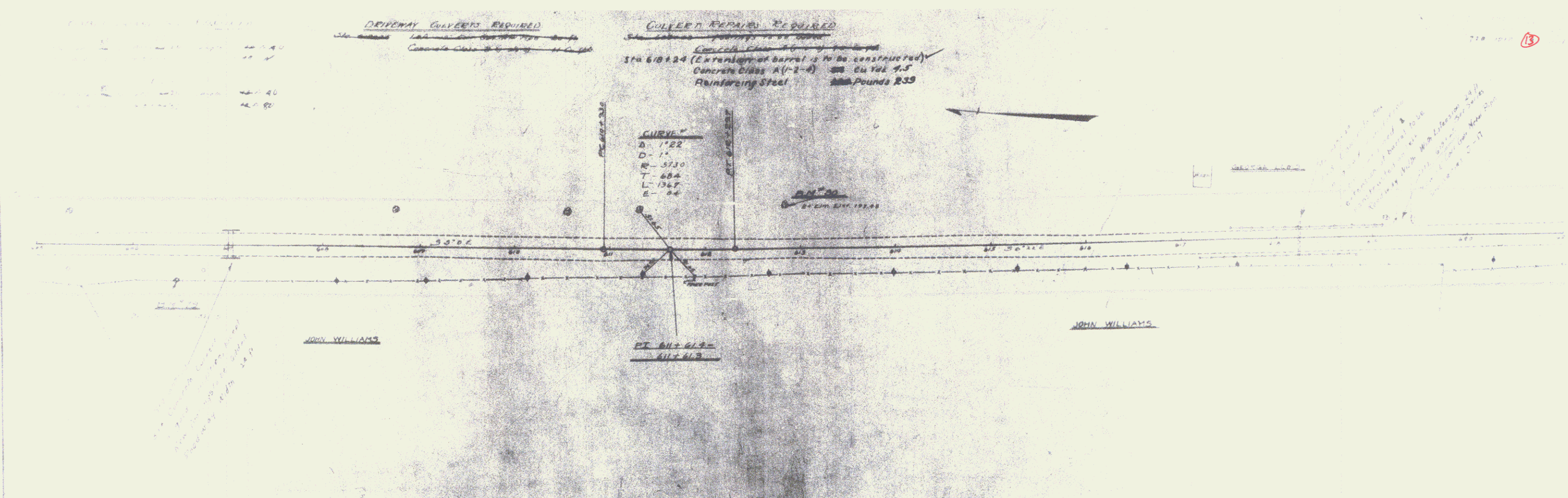
NO.	DATE	BY	TOTAL SHEETS
1			11

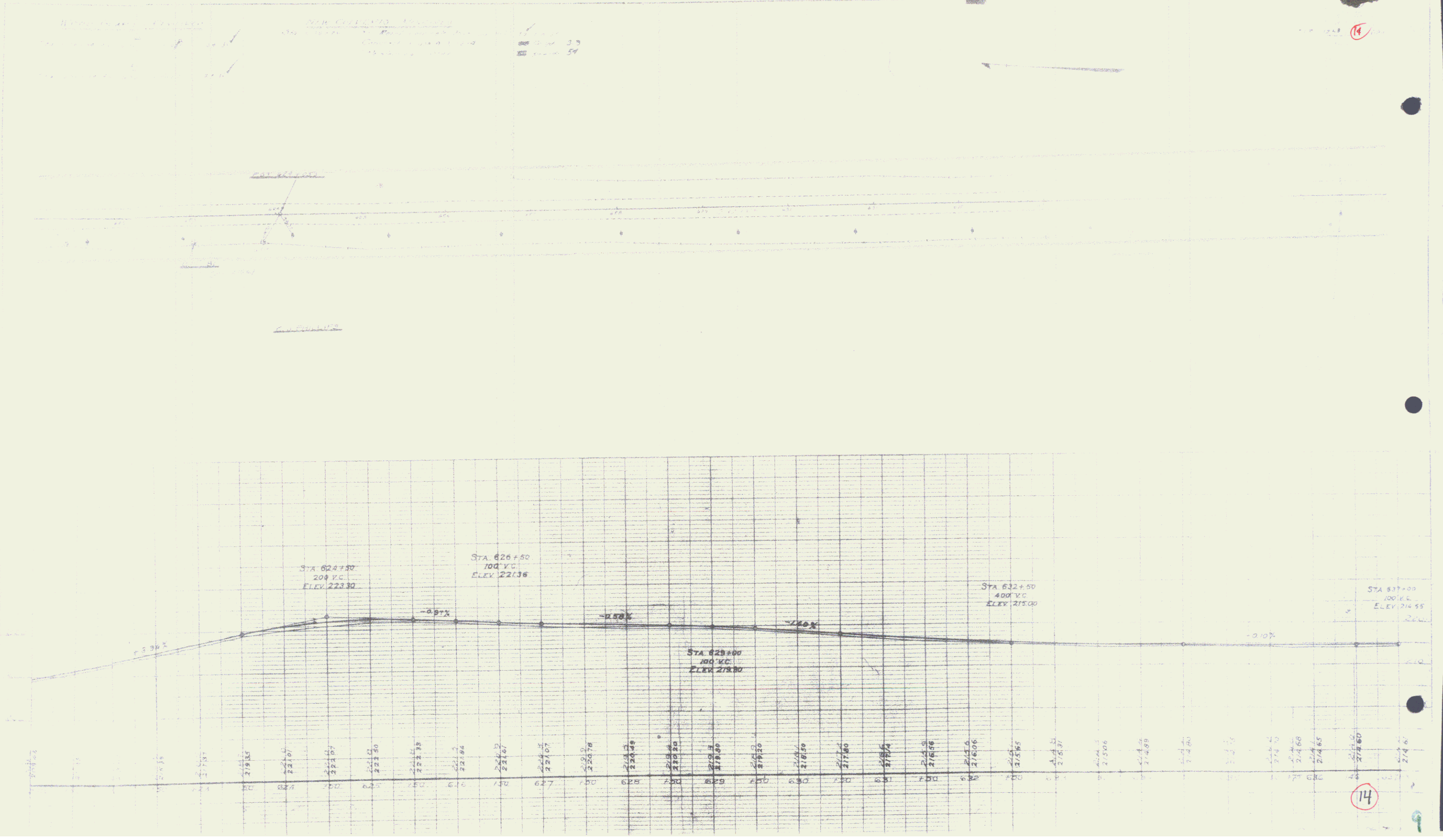
PLAN
 DATE
 BY
 CHECKED BY
 APPROVED BY

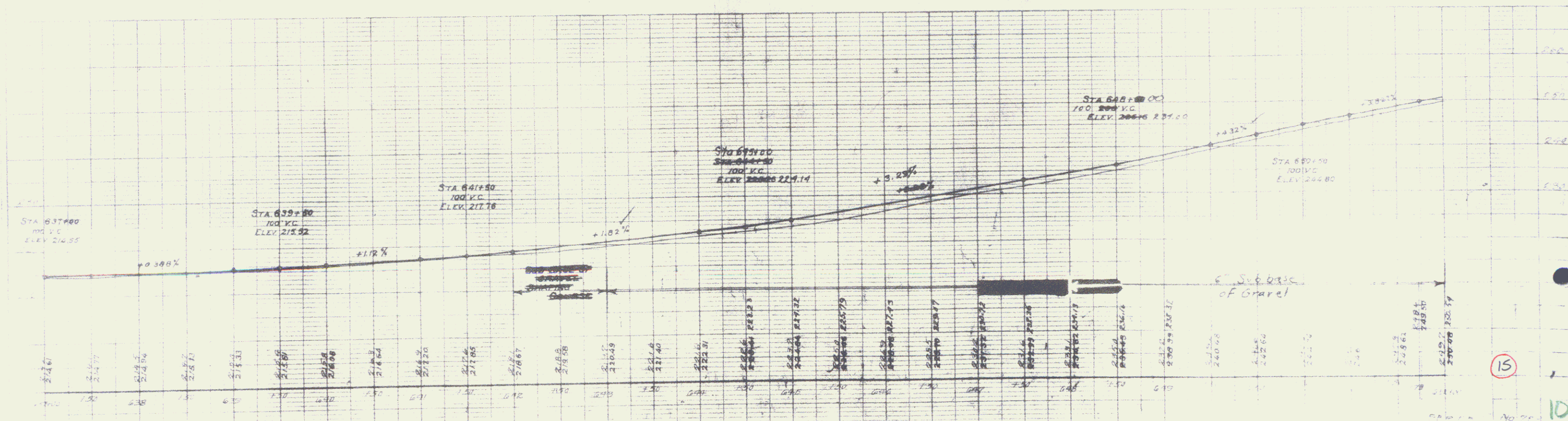
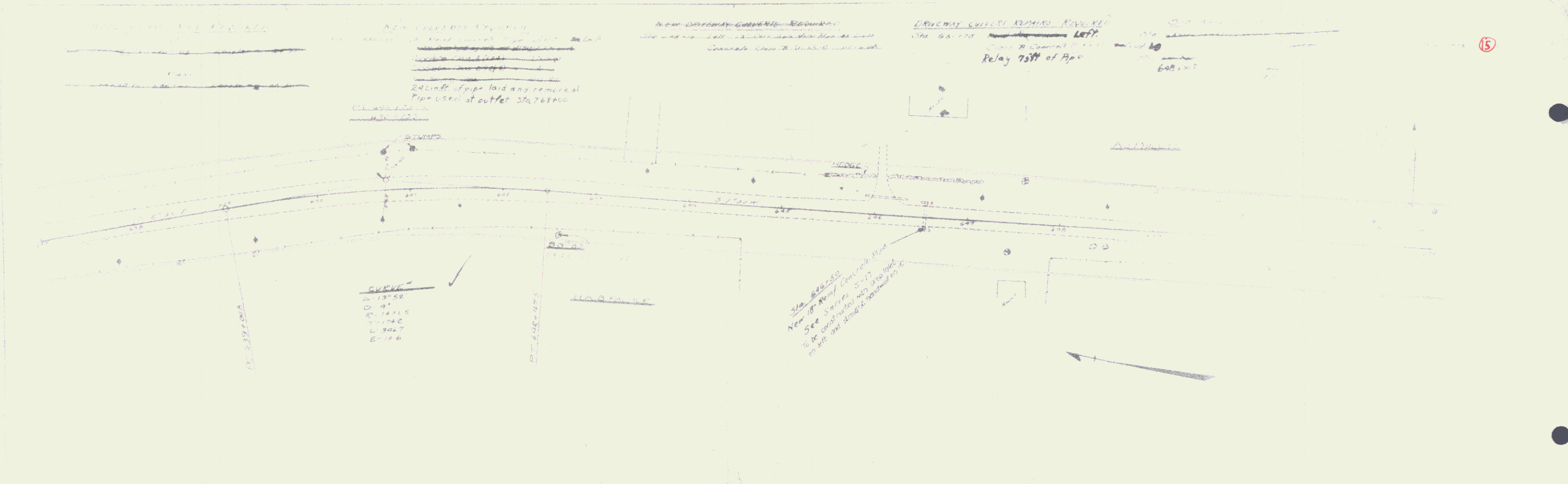


PLAN
 SHEET NO. 13
 PROJECT NO. 100-1000
 DATE: 10/1/50

PROFILE
 SHEET NO. 13
 PROJECT NO. 100-1000
 DATE: 10/1/50





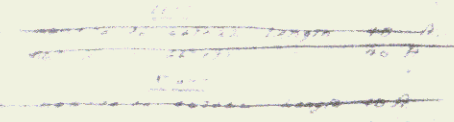


15

15

10

CURB & GUTTER DATA REQUIRED



DRAINAGE CULVERTS REQUIRED

Sta 66700 - Right 12" Concrete Pipe 20' L x 18" H
Class B Concrete (1-1/2' R)
1.4 Cu Yds.

Sta 65340 Left. Relay 8" of Pipe -
Concrete Class B (1-1/2' R)

CURVE

Δ	1133
L	0.35
E	1160
T	1530
L	2100

SUB-BASE OF GRAVEL REQUIRED

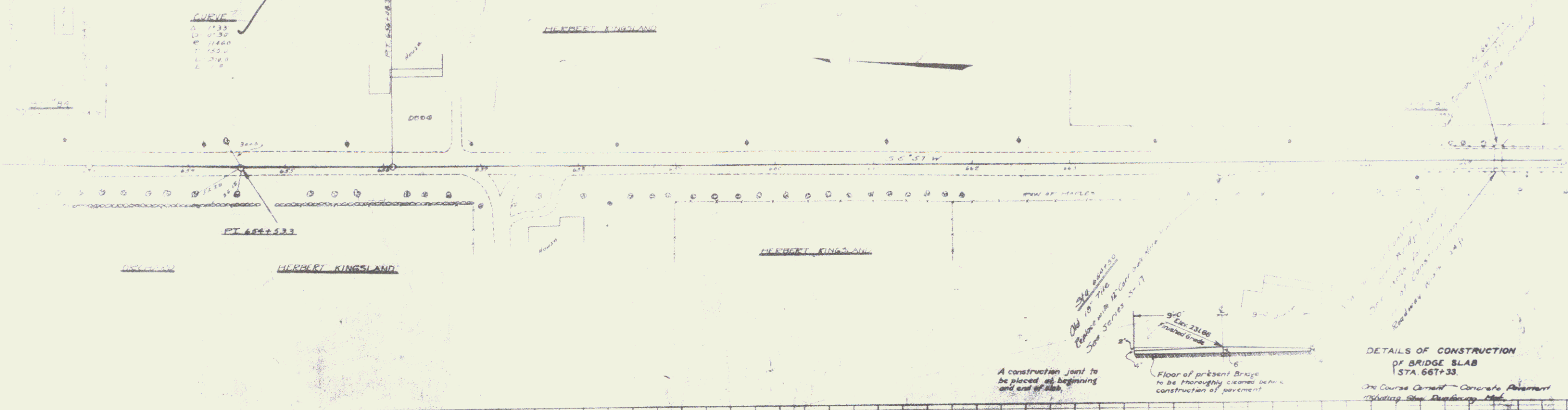
Sta 66700 to 66700 in 5' sub-base of gravel 30' L x 12' W

Sta 65340 to 65340 6' L x 12' W x 12' H

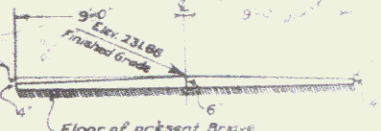
WOOD GUARD RAIL

Left
Sta 66700 to Sta 66700 Length 50 M

Right
Sta 66700 to Sta 66700 Length 37 M



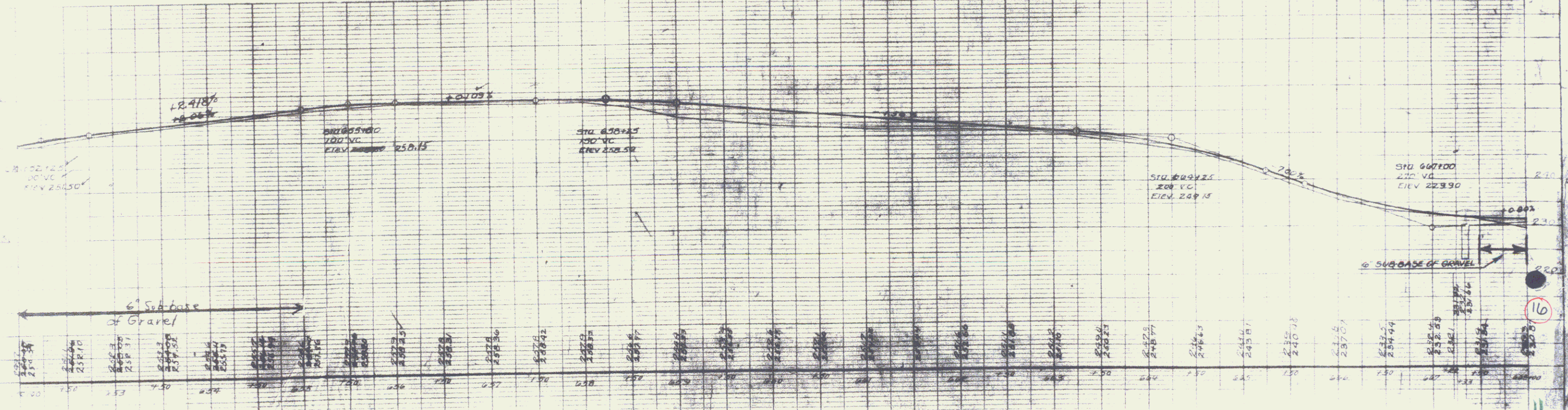
A construction joint to be placed at beginning and end of slab.



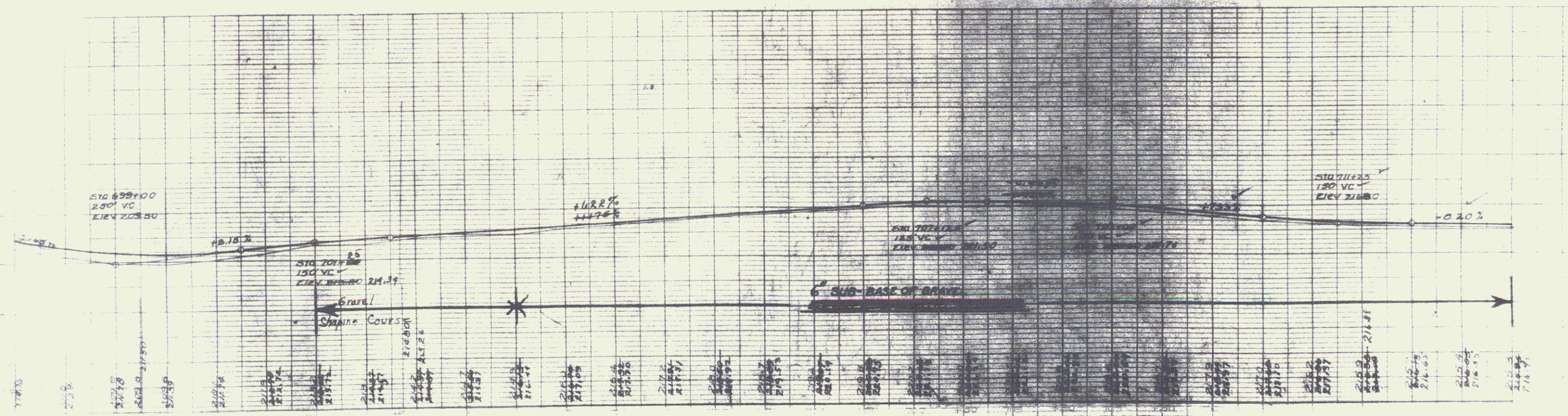
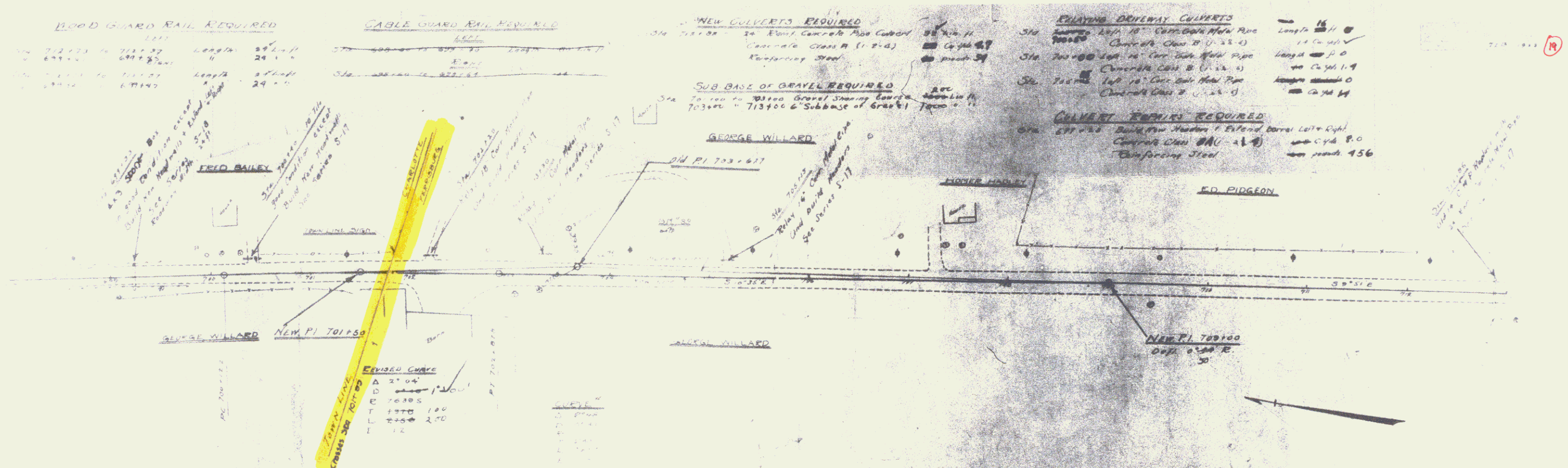
Floor of present bridge to be thoroughly cleaned before construction of pavement.

DETAILS OF CONSTRUCTION OF BRIDGE SLAB STA. 66700

3rd Course Cement Concrete Reinforcement



10

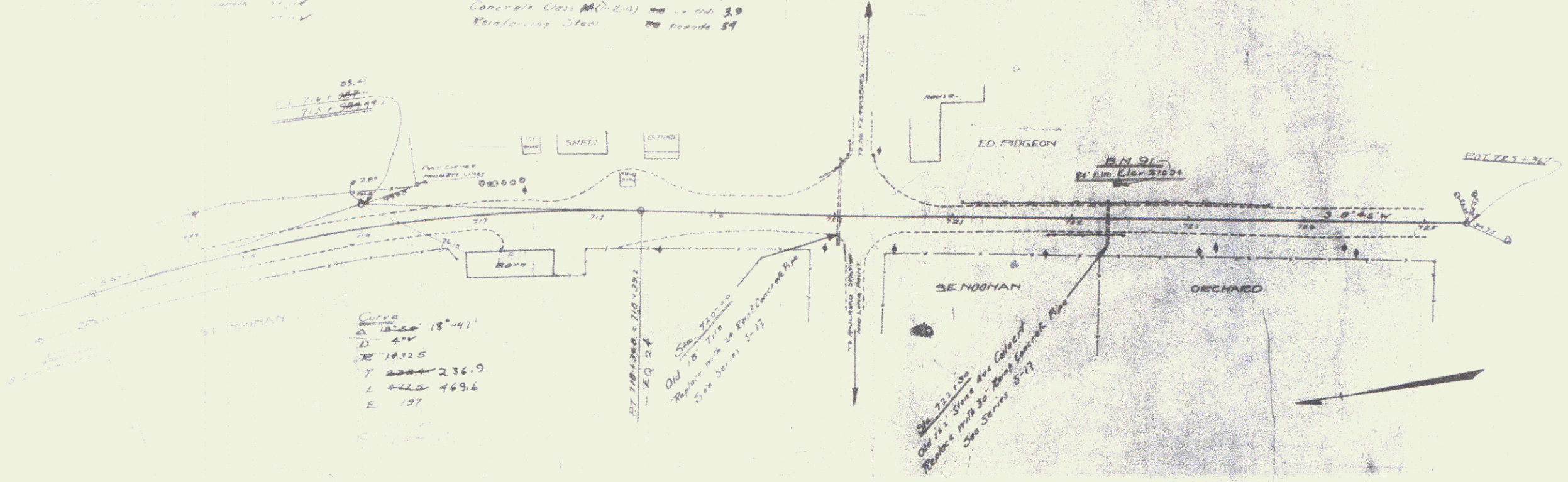


19

NEW CULVERTS REQUIRED
 Sta 72000 24" Reinforced Pipe Culvert 100' in length
 Concrete Class (M_c 2-4) 100' 4.0
 Reinforcing Steel 100' 54
 Sta 72200 24" Reinforced Pipe Culvert 100' in length
 Concrete Class (M_c 2-4) 100' 4.0
 Reinforcing Steel 100' 54

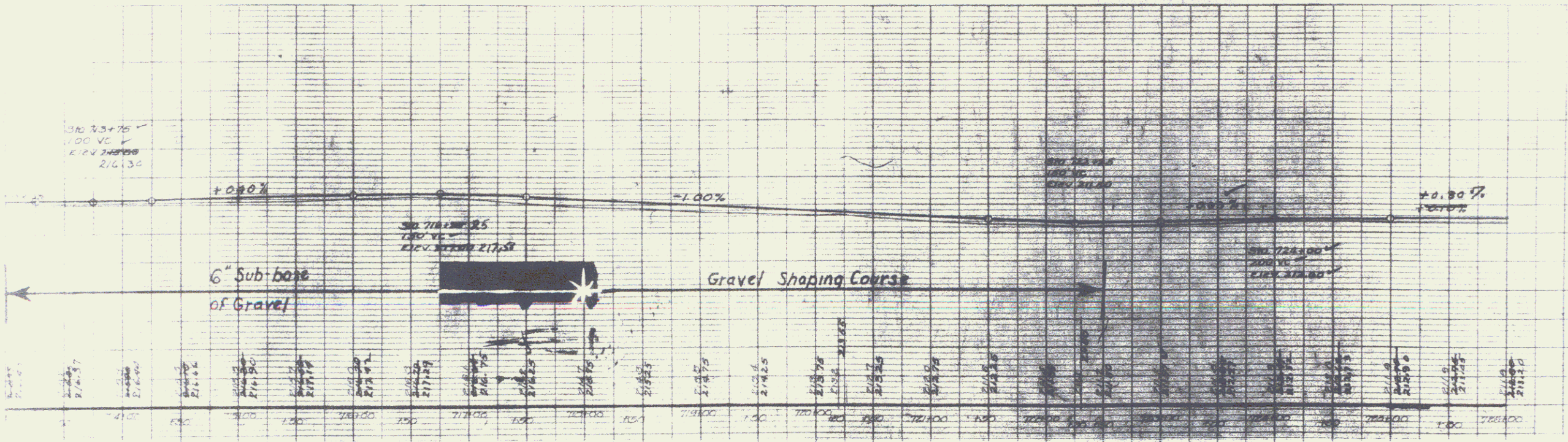
NEW CULVERTS REQUIRED
 Sta 72000 24" Reinforced Pipe Culvert 100' in length
 Concrete Class (M_c 2-4) 100' 4.0
 Reinforcing Steel 100' 54
 Sta 72200 24" Reinforced Pipe Culvert 100' in length
 Concrete Class (M_c 2-4) 100' 4.0
 Reinforcing Steel 100' 54

SUB BASE OF GRAVEL REQUIRED
 Sta 71900 - 71850 6" Subbase of Gravel 500' 10"
 Sta 71800 - 71750 6" Subbase of Gravel 500' 10"



Curve
 Δ 18° 47'
 D 400
 R 192.5
 T 236.9
 L 469.6
 E 197

Sta 72100
 Old 12" Stone Box Culvert
 Replace with 24" Reinforced Pipe
 See Station 577



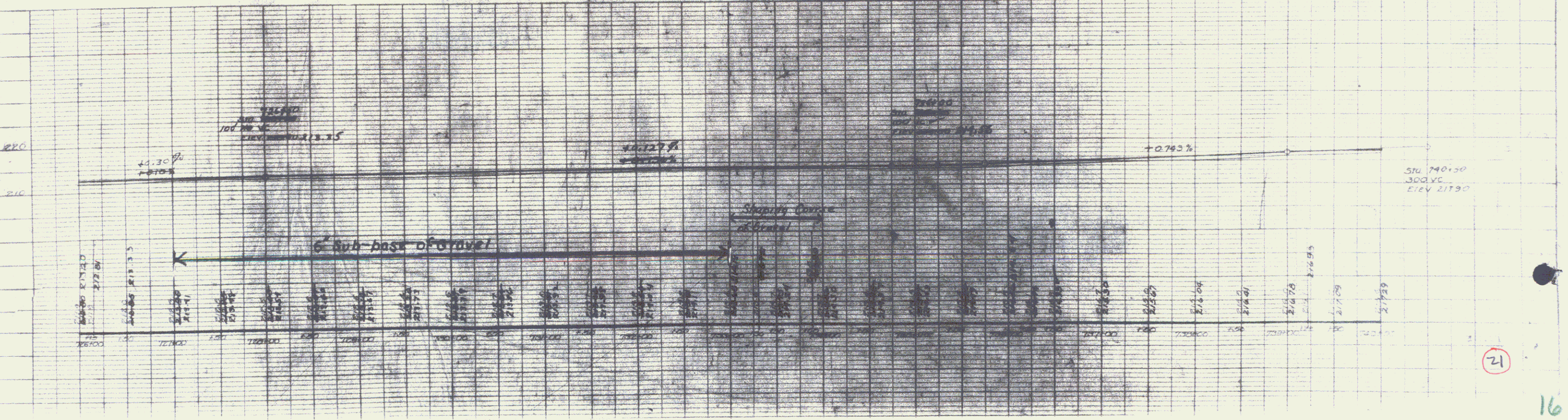
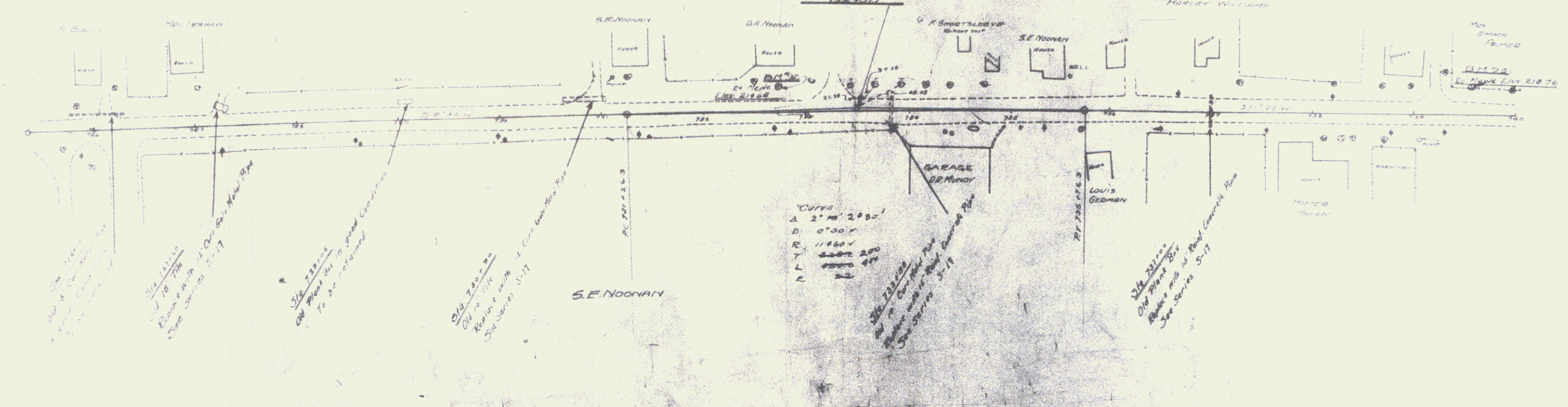
WIND GUARD PILING AT V.C. ROAD
 STA 73110 to 73120 Length 10 ft ✓
 STA 73120 to 73130 Length 10 ft ✓
 STA 73130 to 73140 Length 10 ft ✓
 STA 73140 to 73150 Length 10 ft ✓

NEW COVERTS REQUIRED
 STA 73110 12" CORR GALV. METAL PIPE 11.49
 CONCRETE CLASS B (1-R-5) 26
 REINFORCING STEEL 15 POUNDS
 STA 73120 12" CORR GALV. METAL PIPE 11.49
 CONCRETE CLASS B (1-R-5) 26
 REINFORCING STEEL 15 POUNDS

DRIVEWAY COVERTS REQUIRED
 STA 73110 12" CORR GALV. METAL PIPE 11.49
 CONCRETE CLASS B (1-R-5) 26
 REINFORCING STEEL 15 POUNDS
 STA 73120 12" CORR GALV. METAL PIPE 11.49
 CONCRETE CLASS B (1-R-5) 26
 REINFORCING STEEL 15 POUNDS
 STA 736+20 12" CORR GALV. METAL PIPE 11.49
 CONCRETE CLASS B (1-R-5) 26
 REINFORCING STEEL 15 POUNDS

STA 736+15 Right 12" CORR GALV. METAL PIPE 11.49
 CONCRETE CLASS B (1-R-5) 26
 STA 726+00 Left Repair Handwalk
 CONCRETE CLASS B (1-R-5) 26
 REINFORCING STEEL 15 POUNDS

DATE: 1968
 DRAWN BY: [Signature]
 CHECKED BY: [Signature]

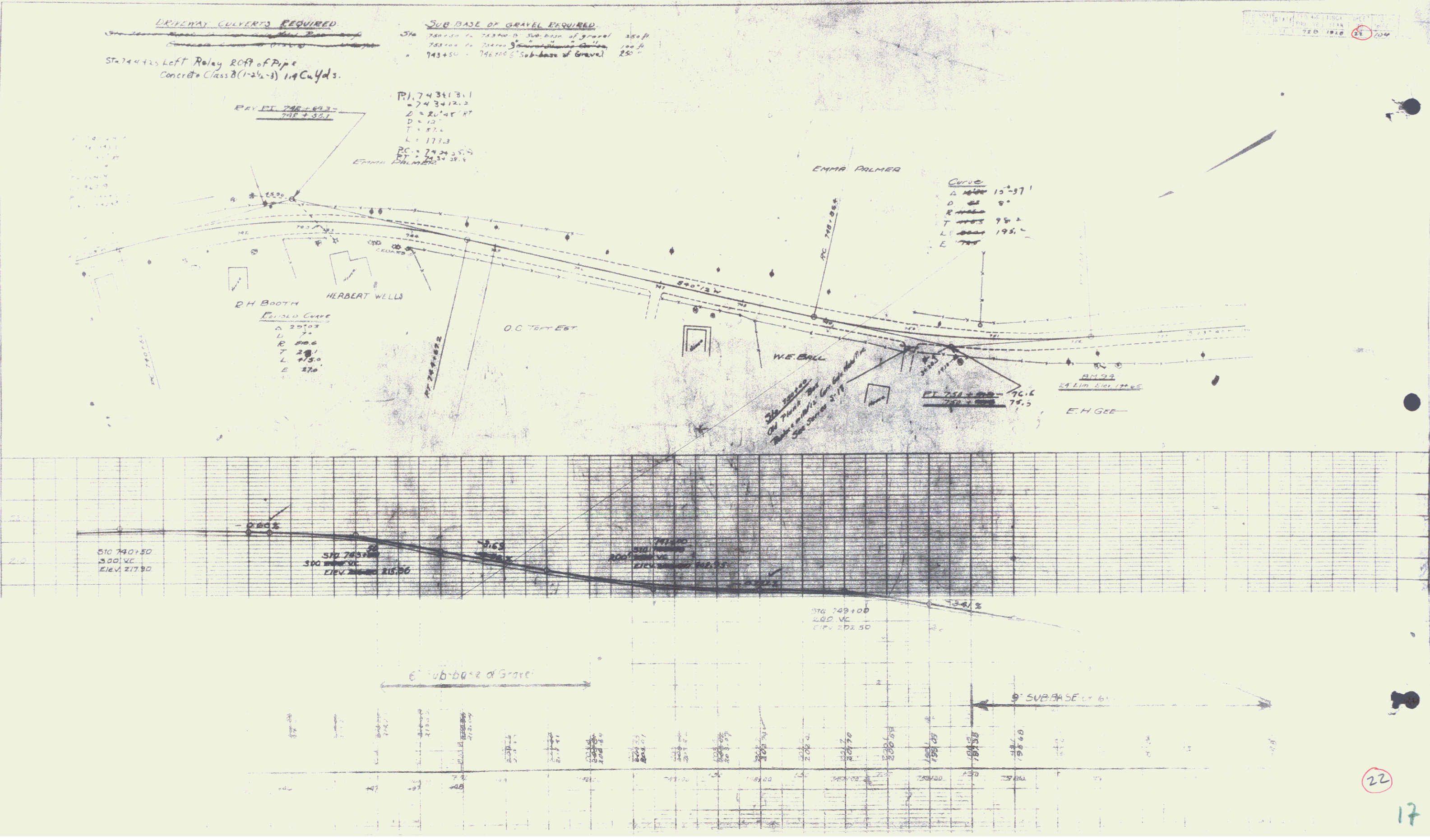


PLAN
 DATE: 1968
 DRAWN BY: [Signature]
 CHECKED BY: [Signature]

PROFILE
 DATE: 1968
 DRAWN BY: [Signature]
 CHECKED BY: [Signature]

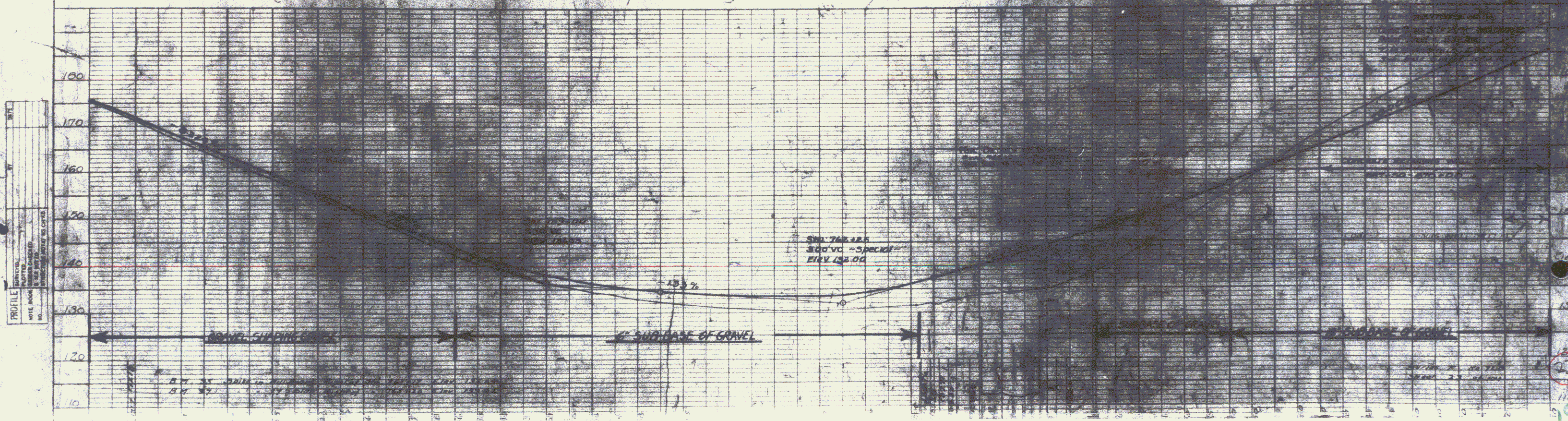
12

16



22

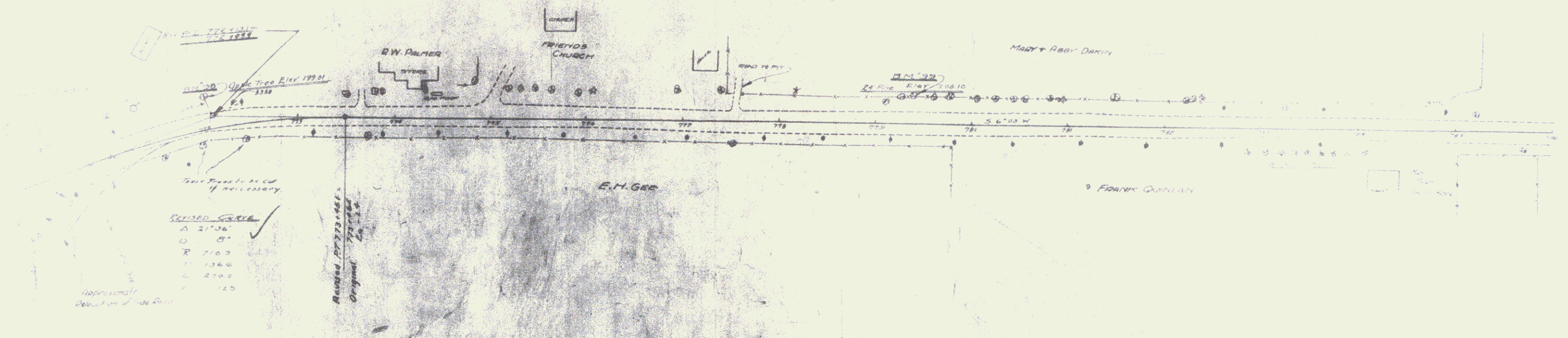
17



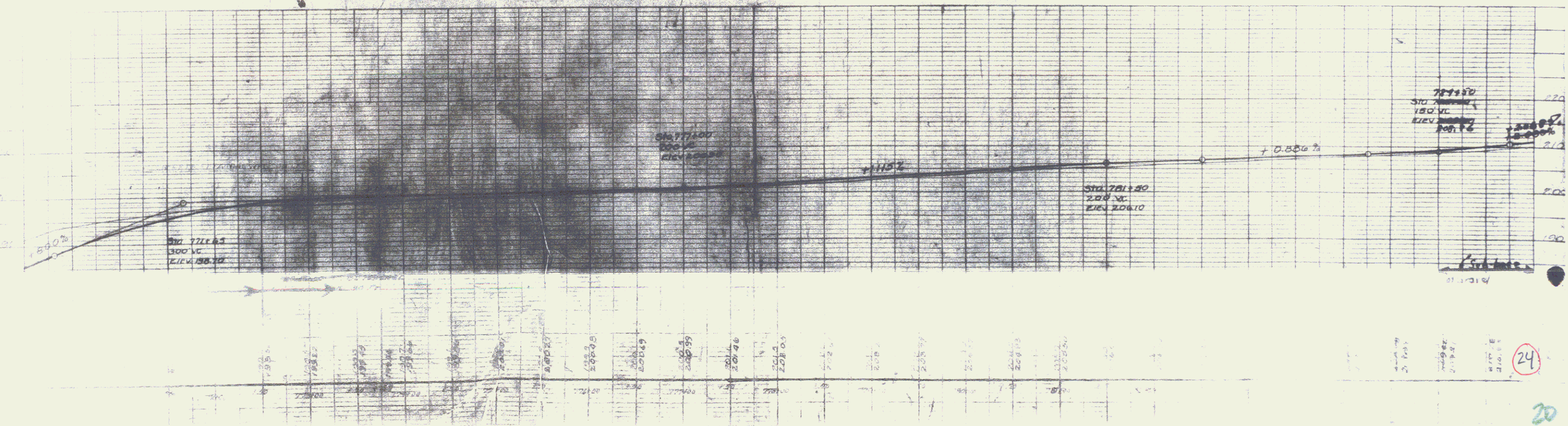
Station	Elevation
764+00	170
764+00	160
764+00	150
764+00	140
764+00	130
764+00	120
764+00	110

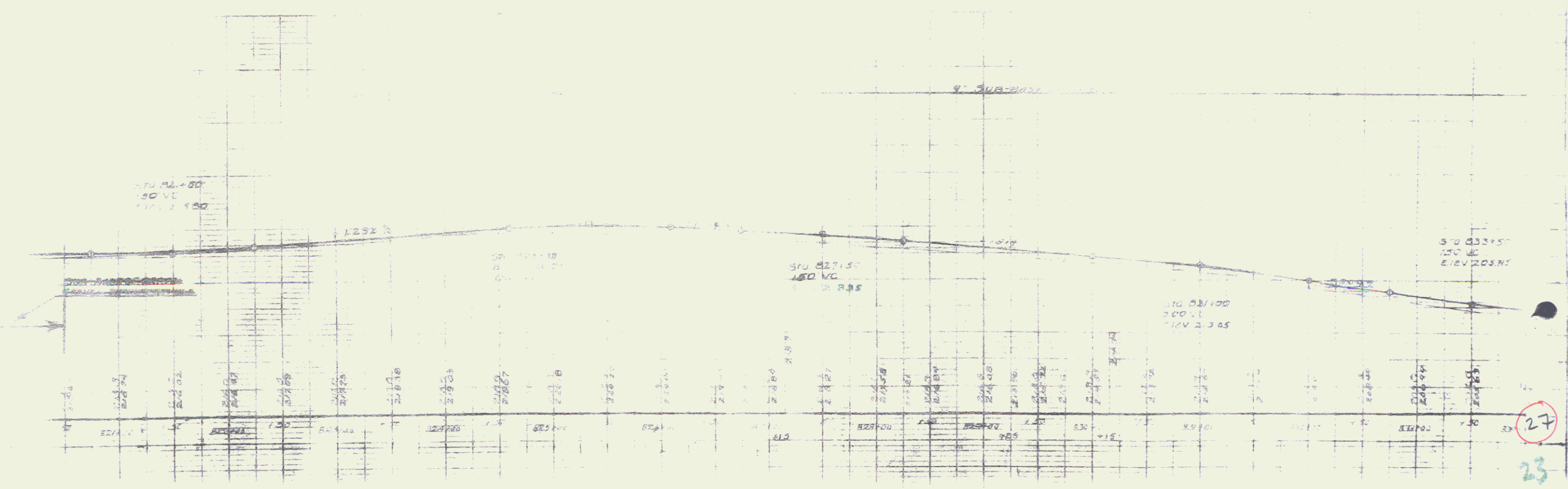
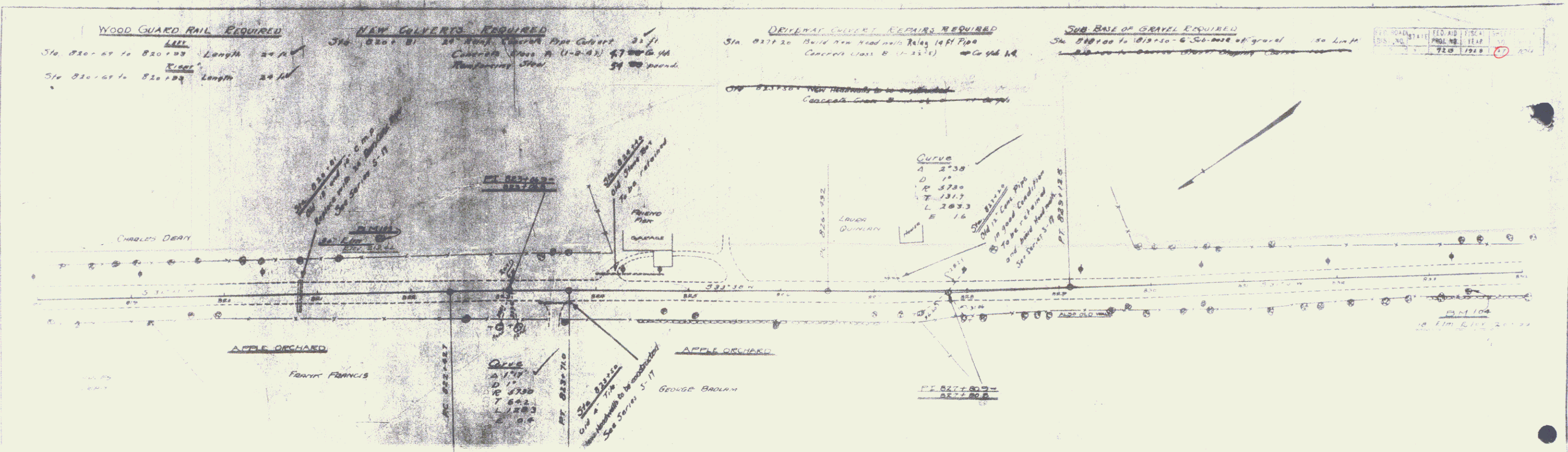
234

2000 FEET OR MORE REQUIRED
 775430
 715470 150' 0"



REVISIONS
 1 21' 0" ✓
 2 0' ✓
 3 7' 0" ✓
 4 13' 6" ✓
 5 2' 0" ✓
 6 1' 0" ✓





27
23

WOOD GUARD RAIL REQUIRED

Station	Length
Sta 824+00 to 824+10	10 FT
Sta 824+10 to 824+20	10 FT
Sta 824+20 to 824+30	10 FT
Sta 824+30 to 824+40	10 FT
Sta 824+40 to 824+50	10 FT

CABLE GUARD RAIL REQUIRED

Station	Length
Sta 824+10 to 824+20	10 FT
Sta 824+20 to 824+30	10 FT
Sta 824+30 to 824+40	10 FT
Sta 824+40 to 824+50	10 FT

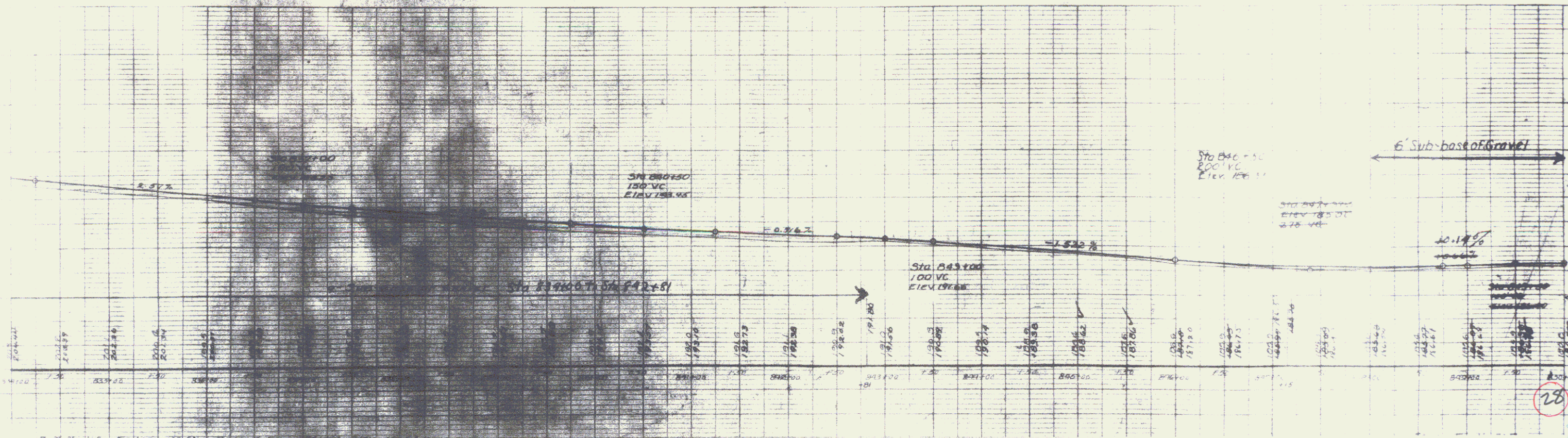
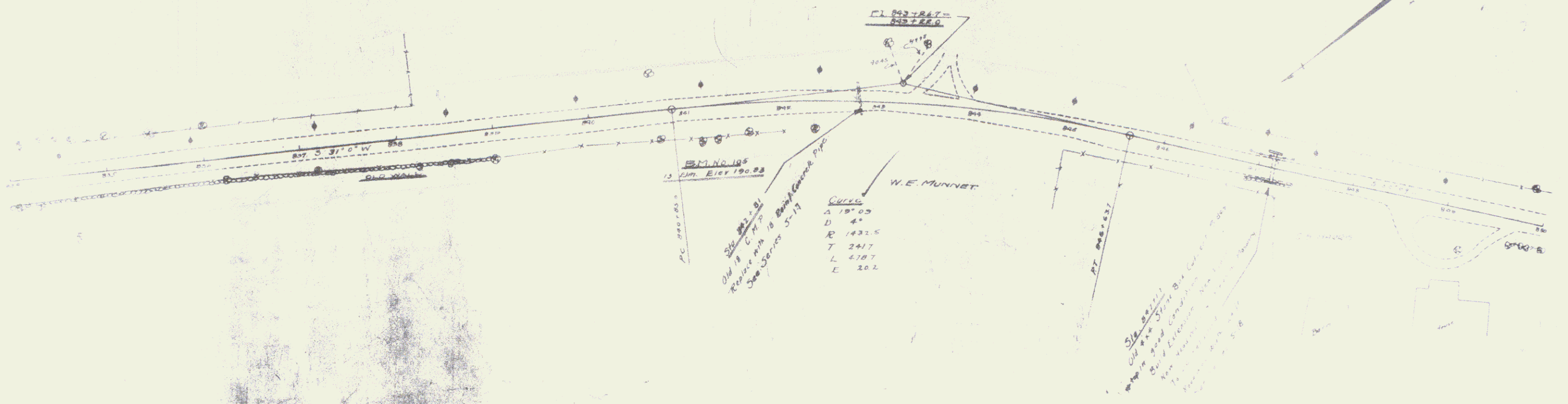
NEW CULVERTS REQUIRED

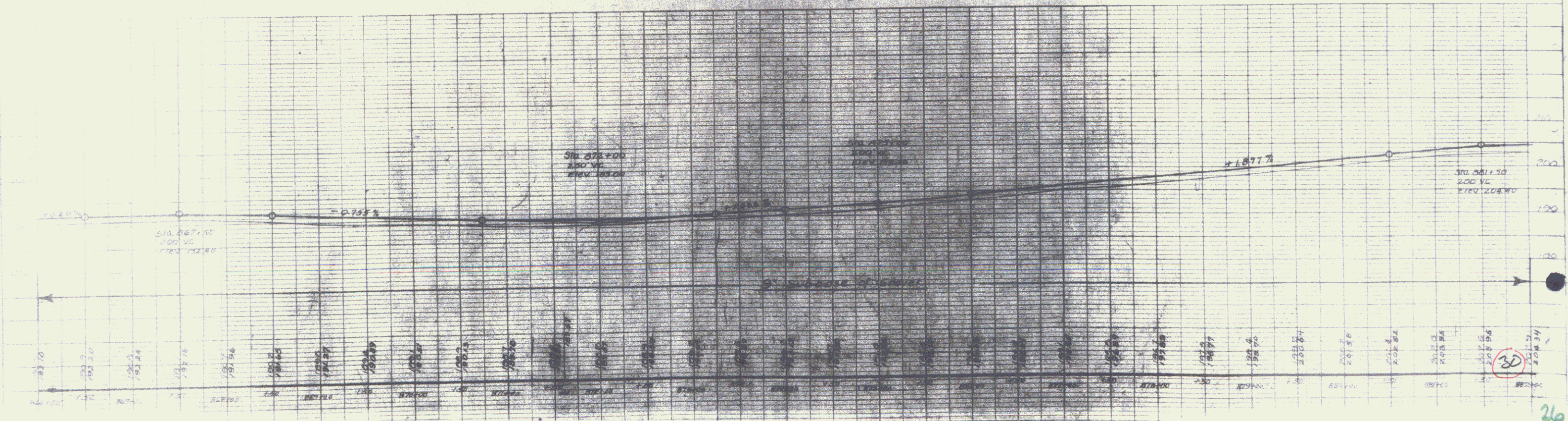
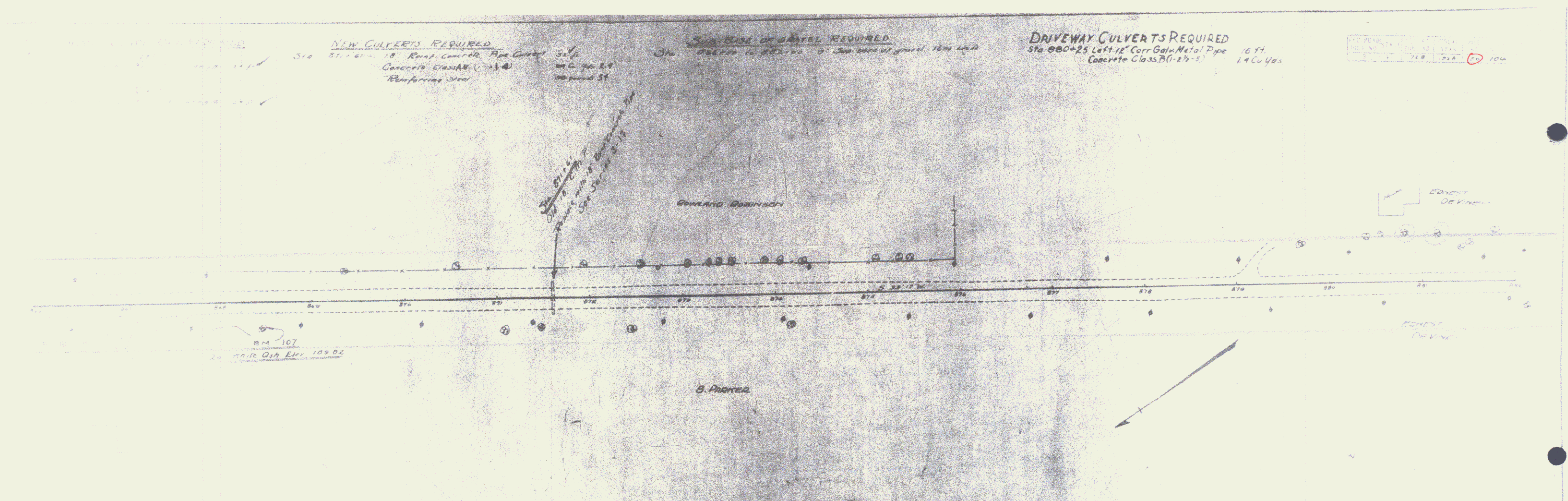
Sta 824+00 - 18" Reinforced Concrete Pipe Culvert
 Concrete Class A (1-2-4)
 Reinforcing Steel
 Length 30 FT

Sta 824+35 - 18" Reinforced Concrete Pipe Culvert
 Concrete Class A (1-2-4)
 Reinforcing Steel
 Length 30 FT

CULVERT REPAIRS REQUIRED

Sta 824+70 - 48" Stone Box Culvert
 Repair - New floor
 Concrete Class A (1-2-4)
 Reinforcing Steel

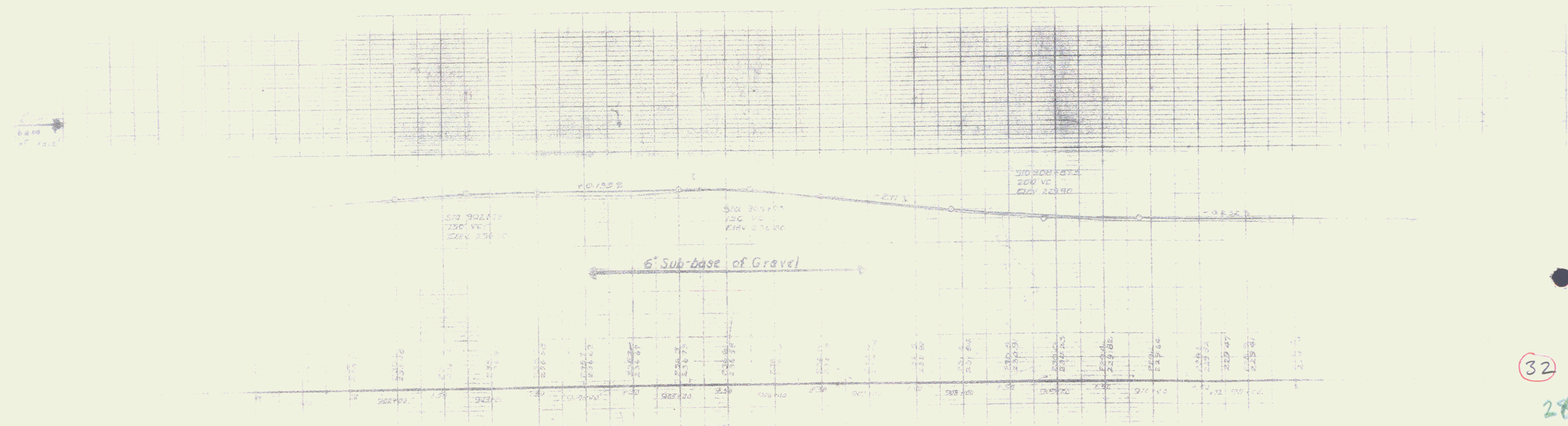


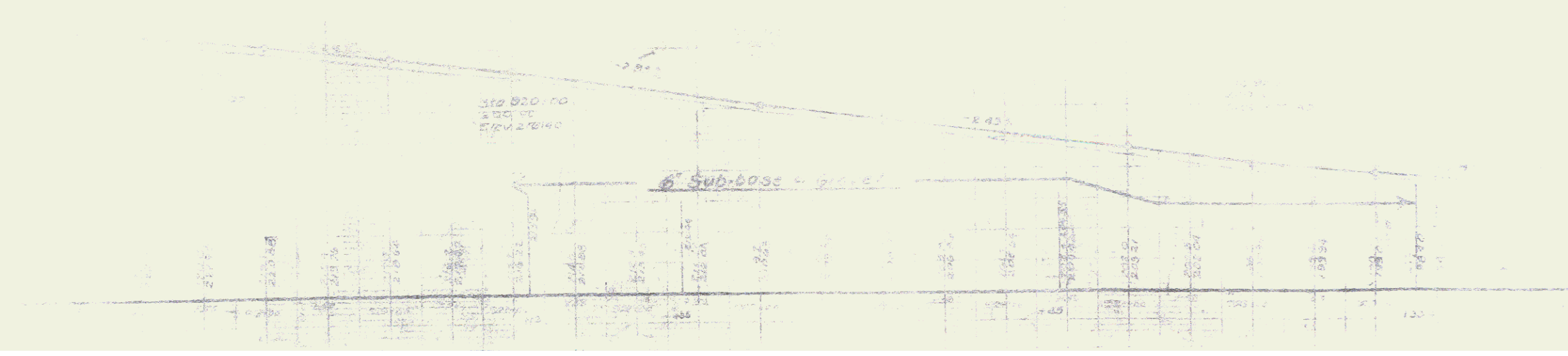
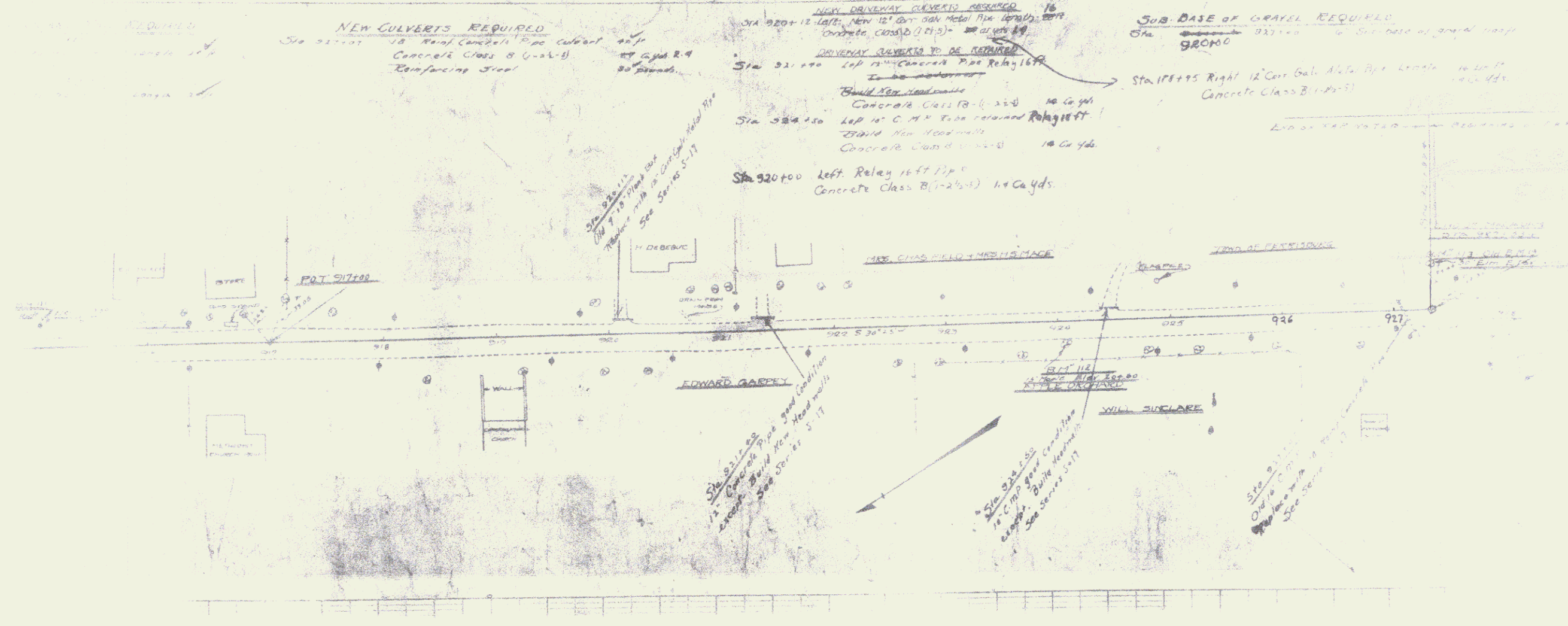


NEW CONCRETE REQUIRED
 15' x 15' x 15' Concrete Area 15' x 15' x 15' 260 cu ft
 Concrete Area 15' x 15' x 15' 260 cu ft
 15' x 15' x 15' 260 cu ft

CONCRETE REQUIRED
 15' x 15' x 15' Concrete Area 15' x 15' x 15' 260 cu ft
 Concrete Area 15' x 15' x 15' 260 cu ft
 15' x 15' x 15' 260 cu ft

- 1. 15' x 15' x 15'
- 2. 15' x 15' x 15'
- 3. 15' x 15' x 15'
- 4. 15' x 15' x 15'
- 5. 15' x 15' x 15'





33

29